



## Defect Listing

Pipe Segment Refere... <b>A6-9_A6-8</b>	City <b>Oliver Springs</b>	Street <b>Tri- county bouleva...</b>	Material <b>Fibreglass Reinf...</b>	Location C... <b>Light High...</b>	Sewer Use <b>Sanitary</b>
Upstream MH <b>A6-9</b>	Total Length <b>62.8</b>	Year Laid	Shape <b>Circular</b>	Location Details	
DS Manhole <b>A6-8</b>	Length surveyed <b>62.8</b>	Year Renewed	Height <b>8</b>	Width <b>8</b>	Pipe Joint... <b>N/A</b>

SPR <b>N/A</b>	MPR <b>5</b>	PO Number <b>4397-03</b>	Customer <b>GRW</b>
SPRI <b>N/A</b>	MPRI <b>2.5</b>	Work Order <b>4397-02</b>	Purpose <b>Pre-Rehabilitation Survey</b>
QSR <b>N/A</b>	QMR <b>3121</b>		
OPR <b>5</b>	Surveyed By <b>Charlie Gordon</b>	Direction <b>Downstream</b>	Date <b>20150826</b>
OPRI <b>2.5</b>	Certificate Number <b>U-615-07000491</b>	Pre-Cleaning <b>Jetting</b>	Time <b>09:08</b>
	Date Cleaned <b>20150826</b>	End Time <b>09:14</b>	Weather <b>Damp</b>
			Media label
			Additional Info

Distance	Condition	Cont. Dfct.	Values			Joint	Clock Position		Grade
			1st	2nd	%		At/From	To	
0.0 ft.	Access Point Manhole				0	<input type="checkbox"/>			
Remarks: A6-9									
0.0 ft.	Water Level				10	<input type="checkbox"/>			
53.9 ft.	Water Level Sag				30	<input type="checkbox"/>			2
56.8 ft.	Water Level Sag	S01			35	<input type="checkbox"/>			3
60.5 ft.	Water Level Sag	F01			35	<input type="checkbox"/>			3
60.5 ft.	Water Level				20	<input type="checkbox"/>			
62.8 ft.	Access Point Manhole				0	<input type="checkbox"/>			
Remarks: A6-8									



## Image Report 4/Page

Pipe Segment Refere... <b>A6-9_A6-8</b>	<b>City</b> <b>Oliver Springs</b>	<b>Street</b> <b>Tri- county bouleva...</b>	<b>Material</b> <b>Fibreglass Reinforc...</b>	<b>Location C...</b> <b>Light High...</b>	<b>Sewer Use</b> <b>Sanitary</b>
<b>Upstream MH</b> <b>A6-9</b>	Total Length <b>62.8</b>	Year Laid	<b>Shape</b> <b>Circular</b>	Location Details	
<b>DS Manhole</b> <b>A6-8</b>	<b>Length surveyed</b> <b>62.8</b>	Year Renewed	<b>Height</b> <b>8</b>	Width <b>8</b>	Pipe Joint... <b>N/A</b>



Distance: 0.0 ft. Grade: 0  
Condition: Access Point Manhole  
Remarks: A6-9



Distance: 0.0 ft. Grade: 0  
Condition: Water Level  
Remarks: N/A



Distance: 53.9 ft. Grade: 2  
Condition: Water Level Sag  
Remarks: N/A



Distance: 56.8 ft. Grade: 3  
Condition: Water Level Sag  
Remarks: N/A

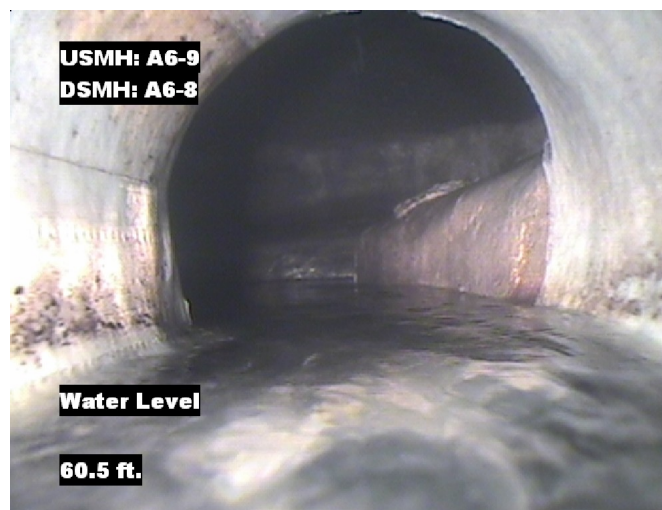


## Image Report 4/Page

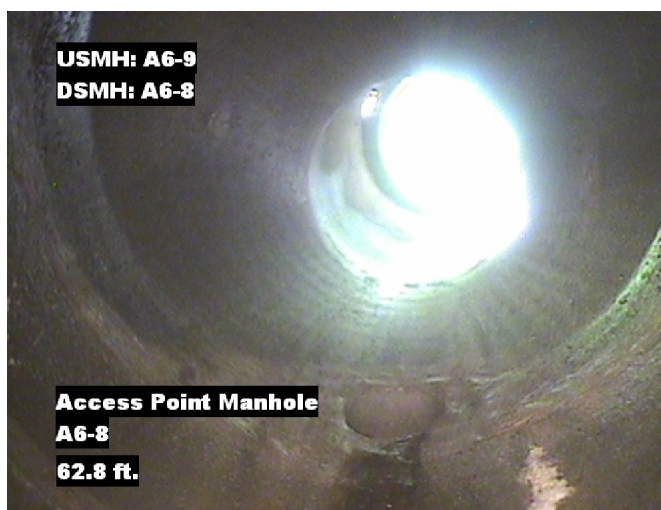
Pipe Segment Refere...	City	Street	Material	Location C...	Sewer Use
<b>A6-9_A6-8</b>	<b>Oliver Springs</b>	<b>Tri- county bouleva...</b>	<b>Fibreglass Reinforc...</b>	<b>Light High...</b>	<b>Sanitary</b>
<b>Upstream MH</b>	Total Length	Year Laid	<b>Shape</b>	Location Details	
<b>A6-9</b>	<b>62.8</b>		<b>Circular</b>		
<b>DS Manhole</b>	<b>Length surveyed</b>	Year Renewed	<b>Height</b>	Width	Pipe Joint...
<b>A6-8</b>	<b>62.8</b>		<b>8</b>	<b>8</b>	<b>N/A</b>



Distance: 60.5 ft. Grade: 3  
Condition: Water Level Sag  
Remarks: N/A



Distance: 60.5 ft. Grade: 0  
Condition: Water Level  
Remarks: N/A



Distance: 62.8 ft. Grade: 0  
Condition: Access Point Manhole  
Remarks: A6-8



## PACP Conditions

Pipe Segment Refere... <b>A6-9_A6-8</b>	City <b>Oliver Springs</b>	Street <b>Tri- county bouleva...</b>	Material <b>Fibreglass Reinforc...</b>	Location C... <b>Light High...</b>	Sewer Use <b>Sanitary</b>
Upstream MH <b>A6-9</b>	Total Length <b>62.8</b>	Year Laid	Shape <b>Circular</b>	Location Details	
DS Manhole <b>A6-8</b>	Length surveyed <b>62.8</b>	Year Renewed	Height <b>8</b>	Width <b>8</b>	Pipe Joint... <b>N/A</b>
SPR <b>N/A</b>	MPR <b>5</b>	PO Number <b>4397-03</b>		Customer <b>GRW</b>	
SPRI <b>N/A</b>	MPRI <b>2.5</b>	Work Order <b>4397-02</b>		Purpose <b>Pre-Rehabilitation Survey</b>	
QSR <b>N/A</b>	QMR <b>3121</b>				
OPR <b>5</b>	Surveyed By <b>Charlie Gordon</b>	Direction <b>Downstream</b>	Date <b>20150826</b>	Media label	
OPRI <b>2.5</b>	Certificate Number <b>U-615-07000491</b>	Pre-Cleaning <b>Jetting</b>	Time <b>09:08</b>	Weather <b>Damp</b>	
Date Cleaned <b>20150826</b>			End Time <b>09:14</b>	Additional Info	

Normal Defects			Structural Ratings			O & M Ratings			Combined Ratings		
			Grade Rating	No. Occur.	Rating	Grade Rating	No. Occur.	Rating	Grade Rating	No. Occur.	Rating
Continuous Defects			1	0	0	1	0	0	1	0	0
			2	0	0	2	1	2	2	1	2
			3	0	0	3	0	0	3	0	0
			4	0	0	4	0	0	4	0	0
			5	0	0	5	0	0	5	0	0
Code	ID	Length	0	0	0	3	1	3	3	1	3
MWLS	F01	3.7									
			Subtotals	0		Subtotals	2		Subtotals	2	
SUMMARY			Pipe Rating		0	Pipe Rating		5	Overall Pipe Rating		5
			Structural Index		0	O&M Index		2.5	Overall Index		2.5
			Str. Quick Rating		0000	O&M Quick Rating		3121	Ovrl. Quick Rating		3121