



Defect Listing

Pipe Segment Refere... A6-7_A6-6A	City Oliver Springs	Street Tri-county boulevard...	Material Fibreglass Reinforc...	Location C... Easement/R...	Sewer Use Sanitary
Upstream MH A6-7	Total Length 249.1	Year Laid	Shape Circular	Location Details	
DS Manhole A6-6A	Length surveyed 249.1	Year Renewed	Height 8	Width 8	Pipe Joint... N/A

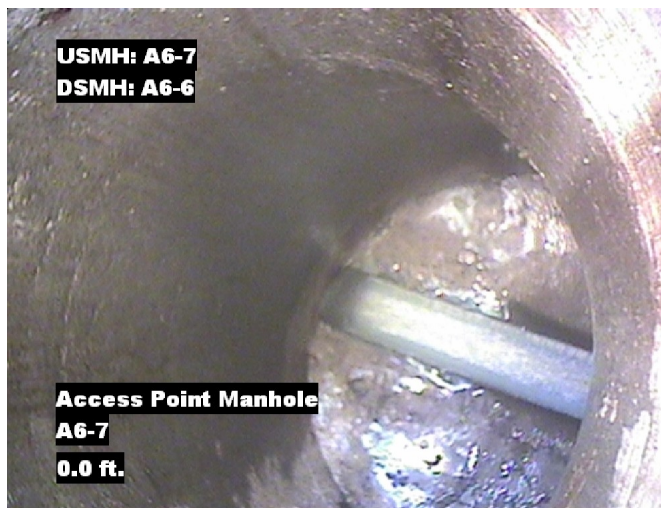
SPR N/A	MPR 2	PO Number 4397-03		Customer GRW	
SPRI N/A	MPRI 2	Work Order 4397-02		Purpose Pre-Rehabilitation Survey	
QSR N/A	QMR 2100				
OPR 2	Surveyed By Charlie Gordon	Direction Downstream	Date 20150826	Media label	
OPRI 2	Certificate Number U-615-07000491	Pre-Cleaning Jetting	Time 10:24	Weather Damp	
Date Cleaned 20150826			End Time 10:37	Additional Info	

Distance	Condition	Cont. Dfct.	Values			Joint	Clock Position		Grade
			1st	2nd	%		At/From	To	
0.0 ft.	Access Point Manhole				0	<input type="checkbox"/>			
Remarks: A6-7									
0.0 ft.	Water Level				10	<input type="checkbox"/>			
241.3 ft.	Water Level Sag				15	<input type="checkbox"/>			2
246.9 ft.	Water Level				5	<input type="checkbox"/>			
249.1 ft.	Access Point Manhole				0	<input type="checkbox"/>			
Remarks: A6-6A									

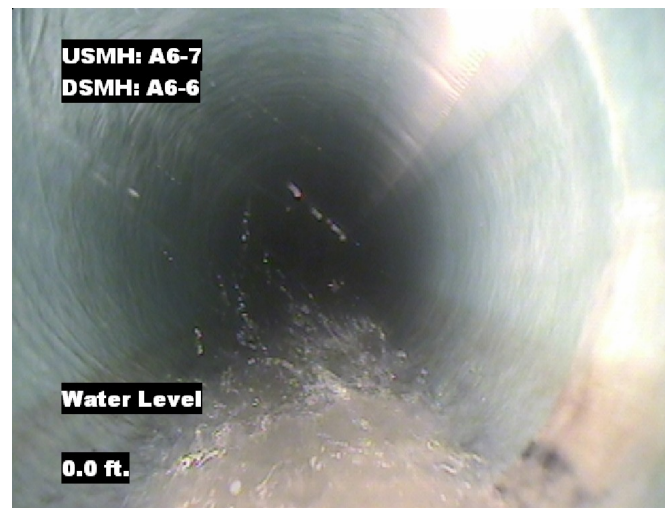


Image Report 4/Page

Pipe Segment Refere... A6-7_A6-6A	City Oliver Springs	Street Tri-county bouleva...	Material Fibreglass Reinforc...		Location C... Easement/R...	Sewer Use Sanitary
Upstream MH A6-7	Total Length 249.1	Year Laid	Shape Circular		Location Details	
DS Manhole A6-6A	Length surveyed 249.1	Year Renewed	Height 8	Width 8	Pipe Joint...	N/A



Distance: 0.0 ft. Grade: 0
Condition: Access Point Manhole
Remarks: A6-7



Distance: 0.0 ft. Grade: 0
Condition: Water Level
Remarks: N/A



Distance: 241.3 ft. Grade: 2
Condition: Water Level Sag
Remarks: N/A

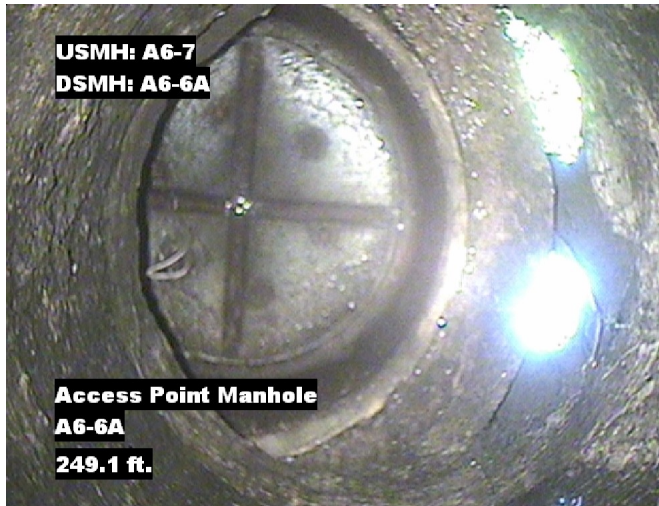


Distance: 246.9 ft. Grade: 0
Condition: Water Level
Remarks: N/A

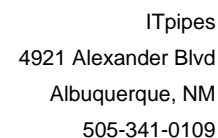


Image Report 4/Page

Pipe Segment Refere...	City	Street	Material	Location C...	Sewer Use
A6-7_A6-6A	Oliver Springs	Tri-county boulevard...	Fibreglass Reinforc...	Easement/R...	Sanitary
Upstream MH	Total Length	Year Laid	Shape	Location Details	
A6-7	249.1		Circular		
DS Manhole	Length surveyed	Year Renewed	Height	Width	Pipe Joint...
A6-6A	249.1		8	8	N/A



Distance: 249.1 ft. Grade: 0
Condition: Access Point Manhole
Remarks: A6-6A



Pipe Segment Refere... A6-7_A6-6A	City Oliver Springs	Street Tri-county boulevard...	Material Fibreglass Reinforc...	Location C... Easement/R...	Sewer Use Sanitary
Upstream MH A6-7	Total Length 249.1	Year Laid	Shape Circular	Location Details	
DS Manhole A6-6A	Length surveyed 249.1	Year Renewed	Height 8	Width 8	Pipe Joint... N/A
SPR N/A	MPR 2	PO Number 4397-03		Customer GRW	
SPRI N/A	MPRI 2	Work Order 4397-02		Purpose	
QSR N/A	QMR 2100			Pre-Rehabilitation Survey	
OPR 2	Surveyed By Charlie Gordon	Direction Downstream	Date 20150826	Media label	
OPRI 2	Certificate Number U-615-07000491	Pre-Cleaning Jetting	Time 10:24	Weather Damp	
Date Cleaned 20150826			End Time 10:37	Additional Info	

[illegible]