



## Defect Listing

Pipe Segment Refere...	City	Street	Material	Location C...	Sewer Use
<b>A6-6_A6-5</b>	<b>Oliver Springs</b>	<b>Main St</b>	<b>Fibreglass Reinforc...</b>	<b>Yard</b>	<b>Sanitary</b>
Upstream MH	Total Length	Year Laid	Shape	Location Details	
<b>A6-6</b>	<b>376</b>		<b>Circular</b>		
DS Manhole	Length surveyed	Year Renewed	Height	Width	Pipe Joint...
<b>A6-5</b>	<b>376</b>		<b>8</b>	<b>8</b>	<b>N/A</b>

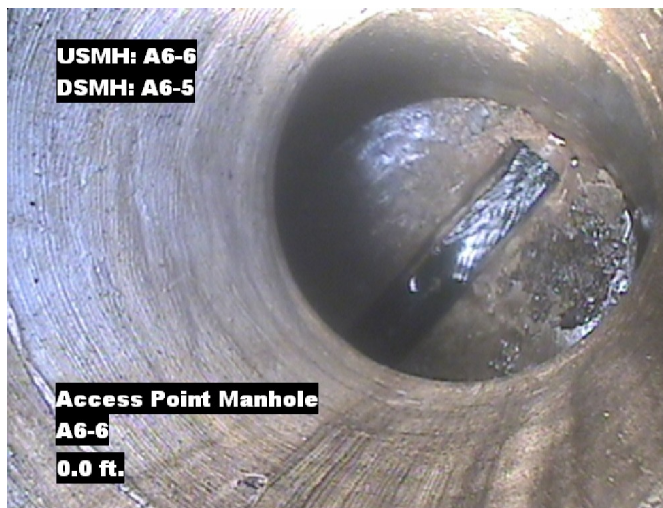
SPR	<b>N/A</b>	MPR	<b>20</b>	PO Number	<b>4397-03</b>	Customer	<b>GRW</b>
SPRI	<b>N/A</b>	MPRI	<b>2.2</b>	Work Order	<b>4397-02</b>	Purpose	<b>Pre-Rehabilitation Survey</b>
QSR	<b>N/A</b>	QMR	<b>4128</b>				
OPR	<b>20</b>	Surveyed By	<b>Charlie Gordon</b>	Direction	<b>Downstream</b>	Date	<b>20150826</b>
OPRI	<b>2.2</b>	Certificate Number	<b>U-615-07000491</b>	Pre-Cleaning	<b>Jetting</b>	Time	<b>13:22</b>
Date Cleaned				<b>20150826</b>		End Time	<b>13:42</b>
						Weather	<b>Dry</b>
						Additional Info	

Distance	Condition	Cont. Dfct.	Values			Joint	Clock Position		Grade
			1st	2nd	%		At/From	To	
0.0 ft.	Access Point Manhole				0	<input type="checkbox"/>			
Remarks: A6-6									
0.0 ft.	Water Level				10	<input type="checkbox"/>			
74.4 ft.	Water Level Sag				15	<input type="checkbox"/>			2
102.7 ft.	Water Level Sag				15	<input type="checkbox"/>			2
195.7 ft.	Tap Factory Made		6		0	<input type="checkbox"/>	3		
195.7 ft.	Infiltration Runner				0	<input type="checkbox"/>	4		4
224.8 ft.	Water Level Sag				20	<input type="checkbox"/>			2
247.6 ft.	Water Level Sag				15	<input type="checkbox"/>			2
251.7 ft.	Water Level Sag	S02			25	<input type="checkbox"/>			2
271.1 ft.	Water Level Sag	F02			25	<input type="checkbox"/>			2
291.7 ft.	Tap Factory Made Active		6		0	<input type="checkbox"/>	3		
373.5 ft.	Water Level				10	<input type="checkbox"/>			
376.0 ft.	Access Point Manhole				0	<input type="checkbox"/>			
Remarks: A6-5									

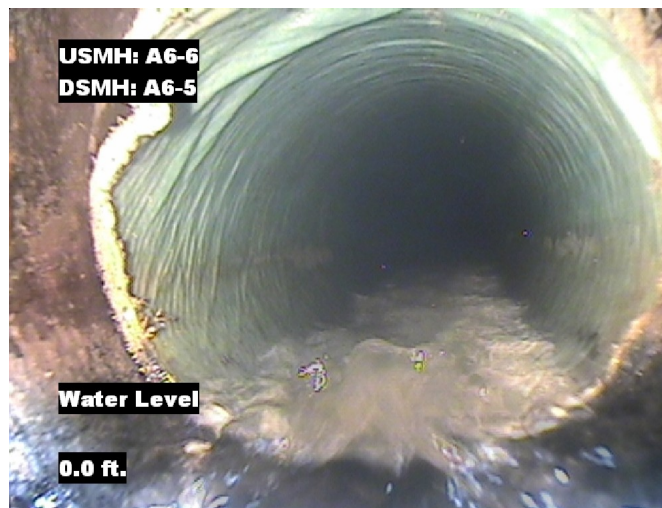


## Image Report 4/Page

Pipe Segment Refere...	City	Street	Material	Location C...	Sewer Use
A6-6_A6-5	Oliver Springs	Main St	Fibreglass Reinforc...	Yard	Sanitary
Upstream MH	Total Length	Year Laid	Shape	Location Details	
A6-6	376		Circular		
DS Manhole	Length surveyed	Year Renewed	Height	Width	Pipe Joint...
A6-5	376		8	8	N/A



Distance: 0.0 ft. Grade: 0  
Condition: Access Point Manhole  
Remarks: A6-6



Distance: 0.0 ft. Grade: 0  
Condition: Water Level  
Remarks: N/A



Distance: 74.4 ft. Grade: 2  
Condition: Water Level Sag  
Remarks: N/A

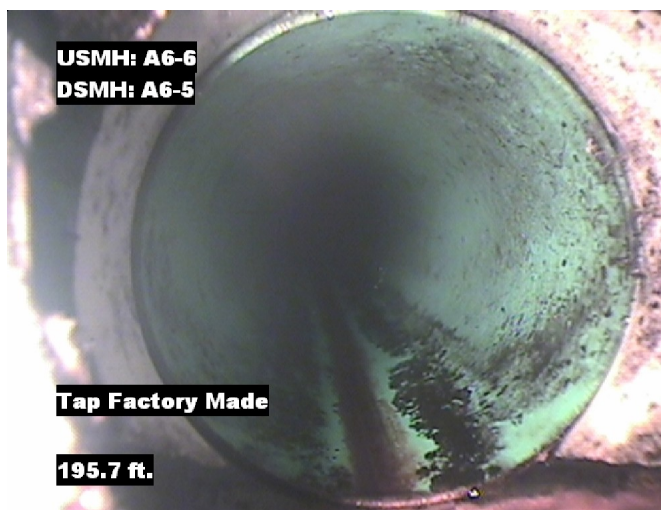


Distance: 102.7 ft. Grade: 2  
Condition: Water Level Sag  
Remarks: N/A

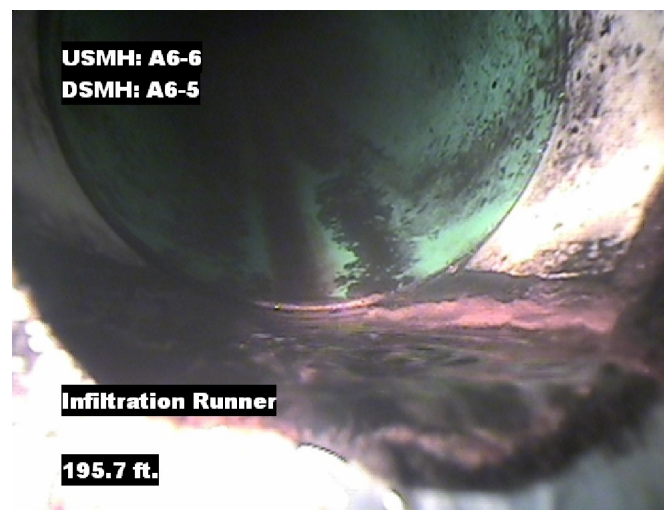


## Image Report 4/Page

Pipe Segment Refere...	City	Street	Material	Location C...	Sewer Use
<b>A6-6_A6-5</b>	<b>Oliver Springs</b>	<b>Main St</b>	<b>Fibreglass Reinforc...</b>	<b>Yard</b>	<b>Sanitary</b>
<b>Upstream MH</b>	Total Length	Year Laid	<b>Shape</b>	Location Details	
<b>A6-6</b>	<b>376</b>		<b>Circular</b>		
<b>DS Manhole</b>	<b>Length surveyed</b>	Year Renewed	<b>Height</b>	Width	Pipe Joint...
<b>A6-5</b>	<b>376</b>		<b>8</b>	<b>8</b>	<b>N/A</b>



Distance: 195.7 ft. Grade: 0  
Condition: Tap Factory Made  
Remarks: N/A



Distance: 195.7 ft. Grade: 4  
Condition: Infiltration Runner  
Remarks: N/A



Distance: 224.8 ft. Grade: 2  
Condition: Water Level Sag  
Remarks: N/A



Distance: 247.6 ft. Grade: 2  
Condition: Water Level Sag  
Remarks: N/A





## Image Report 4/Page

Pipe Segment Refere...	City	Street	Material	Location C...	Sewer Use
<b>A6-6_A6-5</b>	<b>Oliver Springs</b>	<b>Main St</b>	<b>Fibreglass Reinforc...</b>	<b>Yard</b>	<b>Sanitary</b>
<b>Upstream MH</b>	Total Length	Year Laid	<b>Shape</b>	Location Details	
<b>A6-6</b>	<b>376</b>		<b>Circular</b>		
<b>DS Manhole</b>	Length surveyed	Year Renewed	<b>Height</b>	Width	Pipe Joint...
<b>A6-5</b>	<b>376</b>		<b>8</b>	<b>8</b>	<b>N/A</b>



Distance: 251.7 ft. Grade: 2  
Condition: Water Level Sag  
Remarks: N/A



Distance: 271.1 ft. Grade: 2  
Condition: Water Level Sag  
Remarks: N/A



Distance: 291.7 ft. Grade: 0  
Condition: Tap Factory Made Active  
Remarks: N/A

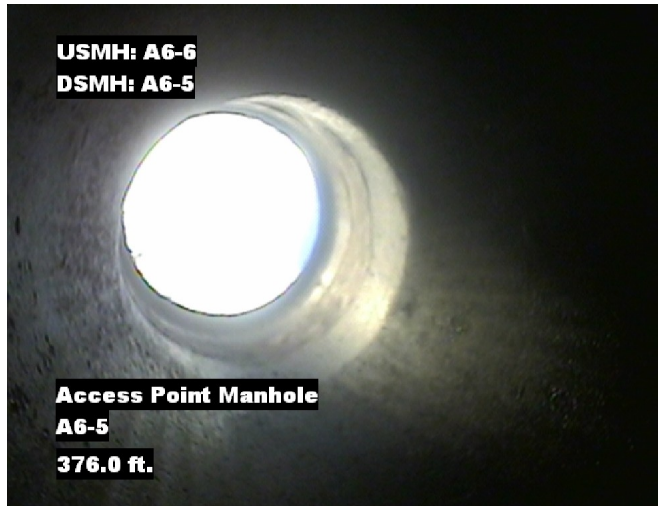


Distance: 373.5 ft. Grade: 0  
Condition: Water Level  
Remarks: N/A



## Image Report 4/Page

Pipe Segment Refere...	City	Street	Material	Location C...	Sewer Use
<b>A6-6_A6-5</b>	<b>Oliver Springs</b>	<b>Main St</b>	<b>Fibreglass Reinforc...</b>	<b>Yard</b>	<b>Sanitary</b>
Upstream MH	Total Length	Year Laid	Shape	Location Details	
<b>A6-6</b>	<b>376</b>		<b>Circular</b>		
DS Manhole	Length surveyed	Year Renewed	Height	Width	Pipe Joint...
<b>A6-5</b>	<b>376</b>		<b>8</b>	<b>8</b>	<b>N/A</b>



Distance: 376.0 ft. Grade: 0  
Condition: Access Point Manhole  
Remarks: A6-5



## PACP Conditions

Pipe Segment Refere... <b>A6-6_A6-5</b>	City <b>Oliver Springs</b>	Street <b>Main St</b>	Material <b>Fibreglass Reinforc...</b>	Location C... <b>Yard</b>	Sewer Use <b>Sanitary</b>
Upstream MH <b>A6-6</b>	Total Length <b>376</b>	Year Laid	Shape <b>Circular</b>	Location Details	
DS Manhole <b>A6-5</b>	Length surveyed <b>376</b>	Year Renewed	Height <b>8</b>	Width <b>8</b>	Pipe Joint... <b>N/A</b>
SPR <b>N/A</b>	MPR <b>20</b>	PO Number <b>4397-03</b>		Customer <b>GRW</b>	
SPRI <b>N/A</b>	MPRI <b>2.2</b>	Work Order <b>4397-02</b>		Purpose <b>Pre-Rehabilitation Survey</b>	
QSR <b>N/A</b>	QMR <b>4128</b>				
OPR <b>20</b>	Surveyed By <b>Charlie Gordon</b>	Direction <b>Downstream</b>	Date <b>20150826</b>	Media label	
OPRI <b>2.2</b>	Certificate Number <b>U-615-07000491</b>	Pre-Cleaning <b>Jetting</b>	Time <b>13:22</b>	Weather <b>Dry</b>	
Date Cleaned <b>20150826</b>			End Time <b>13:42</b>	Additional Info	

Normal Defects			Structural Ratings			O & M Ratings			Combined Ratings		
			Grade Rating	No. Occur.	Rating	Grade Rating	No. Occur.	Rating	Grade Rating	No. Occur.	Rating
Continuous Defects			1	0	0	1	0	0	1	0	0
			2	0	0	2	4	8	2	4	8
			3	0	0	3	0	0	3	0	0
			4	0	0	4	1	4	4	1	4
			5	0	0	5	0	0	5	0	0
Code	ID	Length	0	0	0	2	4	8	2	4	8
MWLS	F02	19.4									
			Subtotals	0		Subtotals	9		Subtotals	9	
SUMMARY			Pipe Rating		0	Pipe Rating		20	Overall Pipe Rating		20
			Structural Index		0	O&M Index		2.2	Overall Index		2.2
			Str. Quick Rating		0000	O&M Quick Rating		4128	Ovrl. Quick Rating		4128