



Defect Listing

Pipe Segment Refere... A6-17_A6-16	City Oliver Springs	Street Highway 61	Material Concrete Pipe (non-...	Location C... Main Highw...	Sewer Use Sanitary
Upstream MH A6-17	Total Length 114.9	Year Laid	Shape Circular	Location Details	
DS Manhole A6-16	Length surveyed 114.9	Year Renewed	Height 8	Width 8	Pipe Joint... 4

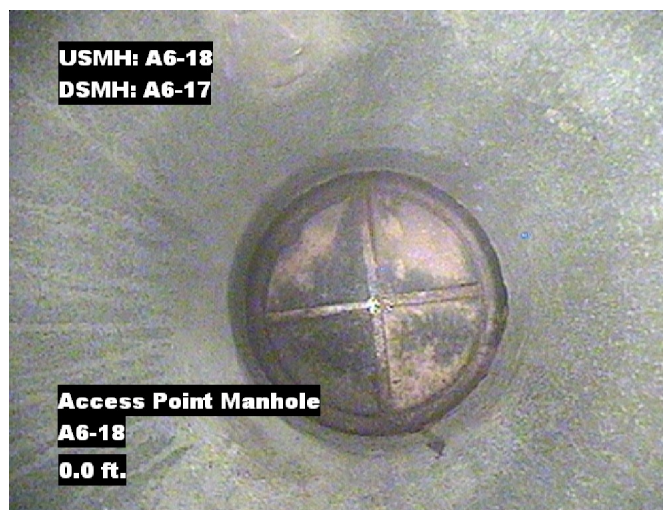
SPR N/A	MPR 2	PO Number 4397-03	Customer GRW
SPRI N/A	MPRI 2	Work Order 4397-02	Purpose Pre-Rehabilitation Survey
QSR N/A	QMR 2100		
OPR 2	Surveyed By Charlie Gordon	Direction Downstream	Date 20150901
OPRI 2	Certificate Number U-615-07000491	Pre-Cleaning Jetting	Time 11:05
	Date Cleaned 20150901	End Time 11:16	Weather Dry
			Media label
			Additional Info

Distance	Condition	Cont. Dfct.	Values			Joint	Clock Position		Grade
			1st	2nd	%		At/From	To	
0.0 ft.	Access Point Manhole				0	<input type="checkbox"/>			
Remarks: A6-17									
0.0 ft.	Water Level				5	<input type="checkbox"/>			
33.8 ft.	Water Level Sag				10	<input type="checkbox"/>			2
113.7 ft.	Water Level				5	<input type="checkbox"/>			
114.9 ft.	Access Point Manhole				0	<input type="checkbox"/>			
Remarks: A6-16									



Image Report 4/Page

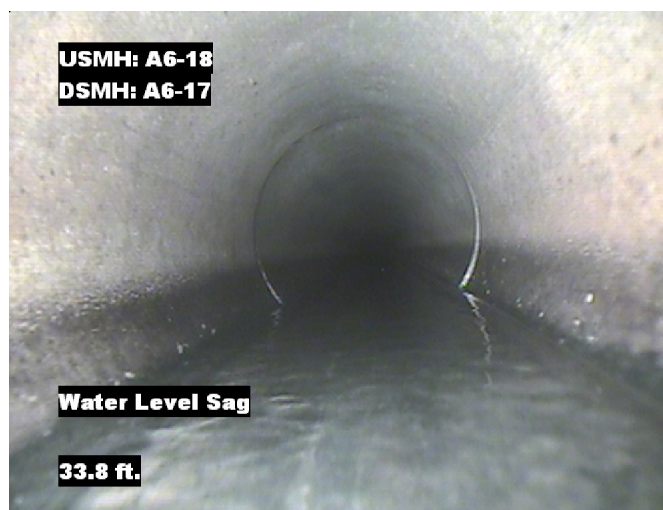
Pipe Segment Refere...	City	Street	Material	Location C...	Sewer Use
A6-17_A6-16	Oliver Springs	Highway 61	Concrete Pipe (non-...	Main Highw...	Sanitary
Upstream MH	Total Length	Year Laid	Shape	Location Details	
A6-17	114.9		Circular		
DS Manhole	Length surveyed	Year Renewed	Height	Width	Pipe Joint...
A6-16	114.9		8	8	4



Distance: 0.0 ft. Grade: 0
Condition: Access Point Manhole
Remarks: A6-17



Distance: 0.0 ft. Grade: 0
Condition: Water Level
Remarks: N/A



Distance: 33.8 ft. Grade: 2
Condition: Water Level Sag
Remarks: N/A

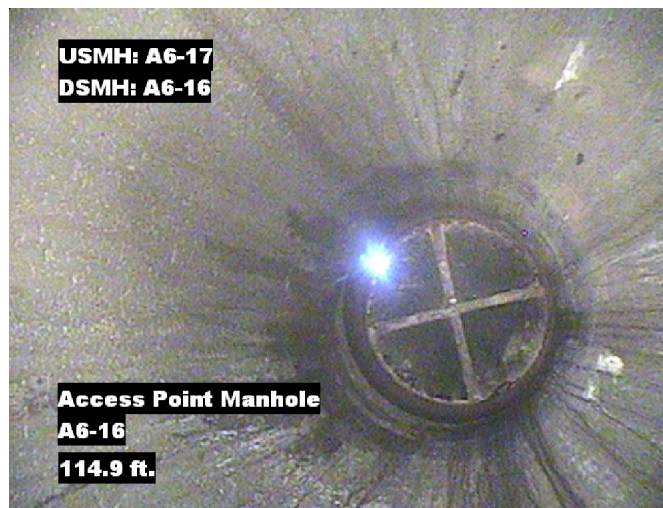


Distance: 113.7 ft. Grade: 0
Condition: Water Level
Remarks: N/A



Image Report 4/Page

Pipe Segment Refere... A6-17_A6-16	City Oliver Springs	Street Highway 61	Material Concrete Pipe (non-...		Location C... Main Highw...	Sewer Use Sanitary
Upstream MH A6-17	Total Length 114.9	Year Laid	Shape Circular		Location Details	
DS Manhole A6-16	Length surveyed 114.9	Year Renewed	Height 8	Width 8	Pipe Joint...	4



Distance: 114.9 ft. Grade: 0
Condition: Access Point Manhole
Remarks: A6-16



Pipe Segment Refere... A6-17_A6-16	City Oliver Springs	Street Highway 61	Material Concrete Pipe (non-...		Location C... Main Highw...	Sewer Use Sanitary
Upstream MH A6-17	Total Length 114.9	Year Laid	Shape Circular		Location Details	
DS Manhole A6-16	Length surveyed 114.9	Year Renewed	Height 8	Width 8	Pipe Joint... 4	
SPR N/A	MPR 2	PO Number 4397-03		Customer GRW		
SPRI N/A	MPRI 2	Work Order 4397-02		Purpose		
QSR N/A	QMR 2100			Pre-Rehabilitation Survey		
OPR 2	Surveyed By Charlie_Gordon	Direction Downstream	Date 20150901		Media label	
OPRI 2	Certificate Number U-615-07000491	Pre-Cleaning Jetting	Time 11:05		Weather Dry	
Date Cleaned 20150901			End Time 11:16		Additional Info	

[illegible]