



Defect Listing

Pipe Segment Refere...	City	Street	Material	Location C...	Sewer Use
A6-16A_A6-15	Oliver Springs	61 highway	Concrete Pipe (non-...	Main Highw...	Sanitary
Upstream MH	Total Length	Year Laid	Shape	Location Details	
A6-16A	161.7		Circular		
DS Manhole	Length surveyed	Year Renewed	Height	Width	Pipe Joint...
A6-15	161.7		8	8	4

SPR	3	MPR	2	PO Number	Customer
SPRI	3	MPRI	2	4397-03	GRW
QSR	3100	QMR	2100	Work Order	Purpose
				4397-02	Pre-Rehabilitation Survey
OPR		Surveyed By	Direction	Date	Media label
5		Barry Rogers	Downstream	20150810	
OPRI		Certificate Number	Pre-Cleaning	Time	Weather
2.5		U-1012-16405	Jetting	10:10	Dry
Date Cleaned				End Time	Additional Info
20150810				10:29	

Distance	Condition	Cont. Dfct.	Values			Joint	Clock Position		Grade
			1st	2nd	%		At/From	To	
0.0 ft.	Access Point Manhole				0	<input type="checkbox"/>			
Remarks: A6-16A									
0.0 ft.	Water Level				5	<input type="checkbox"/>			
5.5 ft.	Tap Factory Made		6		0	<input type="checkbox"/>	9		
80.0 ft.	Tap Factory Made		6		0	<input type="checkbox"/>	9		
81.9 ft.	Hole				0	<input type="checkbox"/>	9		3
112.7 ft.	Tap Factory Made		6		0	<input type="checkbox"/>	9		
124.8 ft.	Deposits Attached Grease				0	<input type="checkbox"/>	8	11	2
156.8 ft.	Water Level				5	<input type="checkbox"/>			
161.7 ft.	Access Point Manhole				0	<input type="checkbox"/>			
Remarks: A6-15									

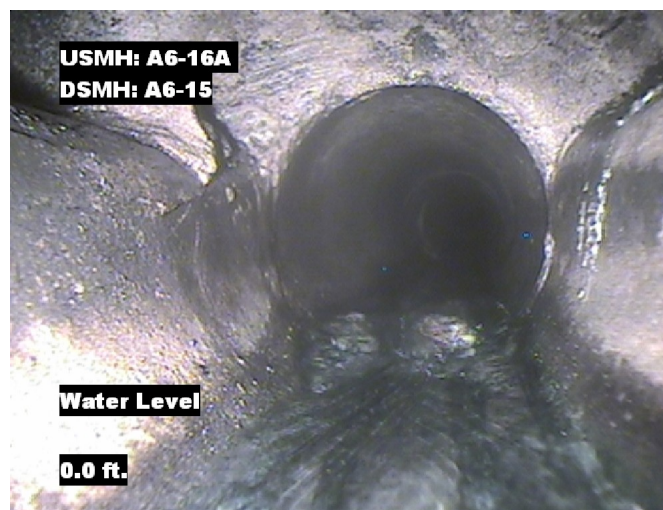


Image Report 4/Page

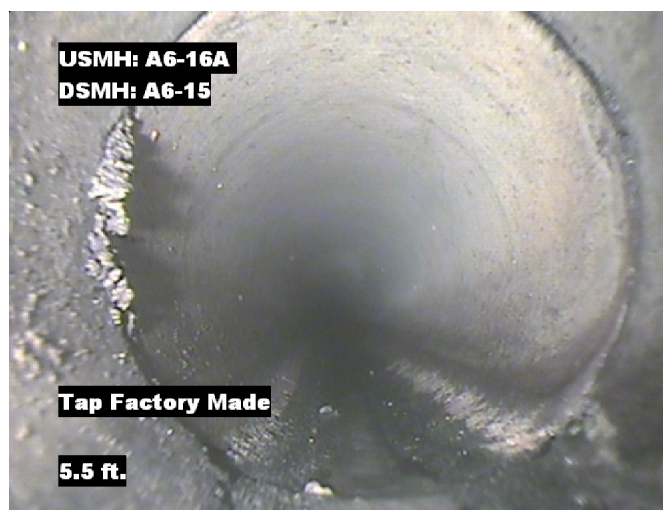
Pipe Segment Refere...	City	Street	Material	Location C...	Sewer Use
A6-16A_A6-15	Oliver Springs	61 highway	Concrete Pipe (non-...	Main Highw...	Sanitary
Upstream MH	Total Length	Year Laid	Shape	Location Details	
A6-16A	161.7		Circular		
DS Manhole	Length surveyed	Year Renewed	Height	Width	Pipe Joint...
A6-15	161.7		8	8	4



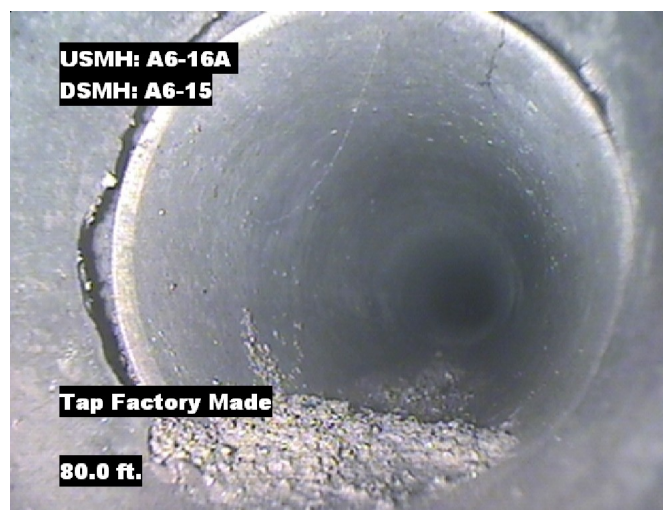
Distance: 0.0 ft. Grade: 0
Condition: Access Point Manhole
Remarks: A6-16A



Distance: 0.0 ft. Grade: 0
Condition: Water Level
Remarks: N/A



Distance: 5.5 ft. Grade: 0
Condition: Tap Factory Made
Remarks: N/A

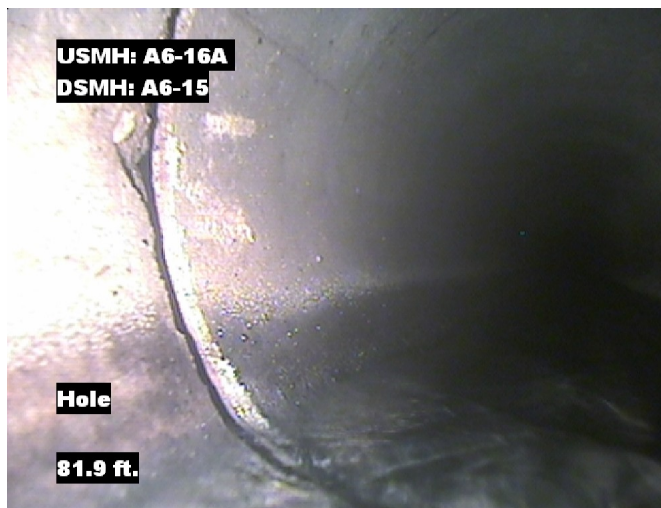


Distance: 80.0 ft. Grade: 0
Condition: Tap Factory Made
Remarks: N/A

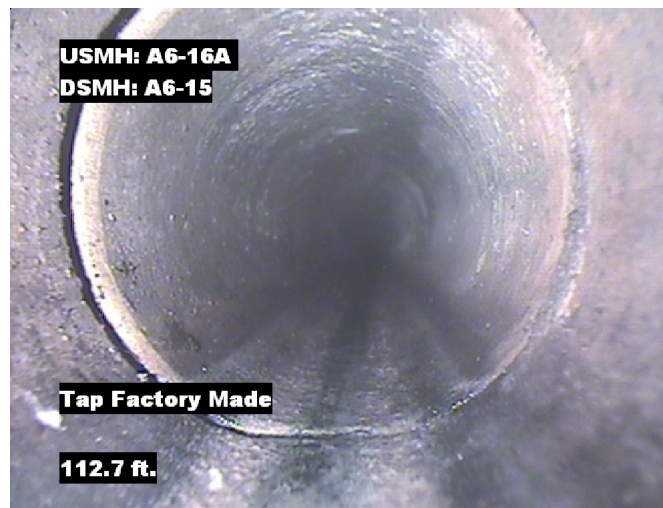


Image Report 4/Page

Pipe Segment Refere...	City	Street	Material	Location C...	Sewer Use
A6-16A_A6-15	Oliver Springs	61 highway	Concrete Pipe (non-...	Main Highw...	Sanitary
Upstream MH	Total Length	Year Laid	Shape	Location Details	
A6-16A	161.7		Circular		
DS Manhole	Length surveyed	Year Renewed	Height	Width	Pipe Joint...
A6-15	161.7		8	8	4



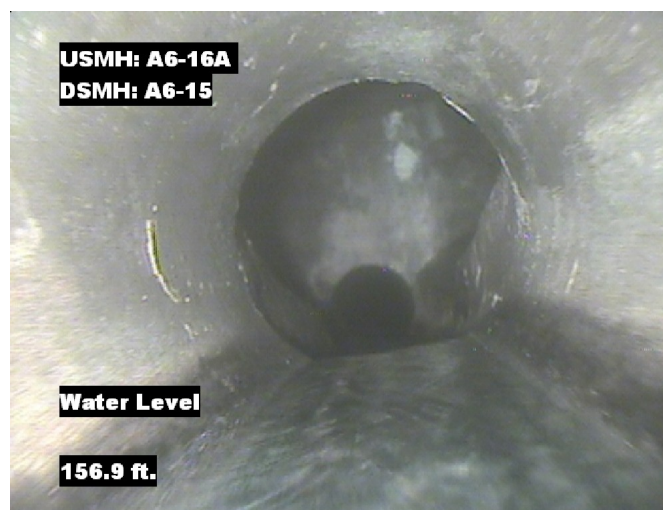
Distance: 81.9 ft. Grade: 3
Condition: Hole
Remarks: N/A



Distance: 112.7 ft. Grade: 0
Condition: Tap Factory Made
Remarks: N/A



Distance: 124.8 ft. Grade: 2
Condition: Deposits Attached Grease
Remarks: N/A



Distance: 156.8 ft. Grade: 0
Condition: Water Level
Remarks: N/A



Image Report 4/Page

Pipe Segment Refere...	City	Street	Material	Location C...	Sewer Use
A6-16A_A6-15	Oliver Springs	61 highway	Concrete Pipe (non-...	Main Highw...	Sanitary
Upstream MH	Total Length	Year Laid	Shape	Location Details	
A6-16A	161.7		Circular		
DS Manhole	Length surveyed	Year Renewed	Height	Width	Pipe Joint...
A6-15	161.7		8	8	4



Distance: 161.7 ft. Grade: 0
Condition: Access Point Manhole
Remarks: A6-15



Pipe Segment Refere... A6-16A_A6-15	City Oliver Springs	Street 61 highway	Material Concrete Pipe (non-...		Location C... Main Highw...	Sewer Use Sanitary
Upstream MH A6-16A	Total Length 161.7	Year Laid	Shape Circular		Location Details	
DS Manhole A6-15	Length surveyed 161.7	Year Renewed	Height 8	Width 8	Pipe Joint... 4	
SPR 3	MPR 2	PO Number 4397-03		Customer GRW		
SPRI 3	MPRI 2	Work Order 4397-02		Purpose		
QSR 3100	QMR 2100			Pre-Rehabilitation Survey		
OPR 5	Surveyed By Barry_Rogers	Direction Downstream	Date 20150810		Media label	
OPRI 2.5	Certificate Number U-1012-16405	Pre-Cleaning Jetting	Time 10:10		Weather Dry	
Date Cleaned 20150810			End Time 10:29		Additional Info	

			Structural Ratings			O & M Ratings			Combined Ratings		
			Grade Rating	No. Occur.	Rating	Grade Rating	No. Occur.	Rating	Grade Rating	No. Occur.	Rating
Normal Defects											
<div>Continuous Defects</div> <div>CodeIDLength</div>			1	0	0	1	0	0	1	0	0
			2	0	0	2	1	2	2	1	2
			3	1	3	3	0	0	3	1	3
			4	0	0	4	0	0	4	0	0
			5	0	0	5	0	0	5	0	0
Subtotals			1		Subtotals	1		Subtotals	2		
SUMMARY			Pipe Rating Structural Index Str. Quick Rating	3 3.0 3100	Pipe Rating O&M Index O&M Quick Rating	2 2.0 2100	Overall Pipe Rating Overall Index Ovrl. Quick Rating	5 2.5 3121			