



## Defect Listing

Pipe Segment Refere... <b>A6-14_A6-13</b>	City <b>Oliver Springs</b>	Street <b>61 highway</b>	Material <b>Concrete Pipe (non-...</b>	Location C... <b>Main Highw...</b>	Sewer Use <b>Sanitary</b>
Upstream MH <b>A6-14</b>	Total Length <b>44.6</b>	Year Laid	Shape <b>Circular</b>	Location Details	
DS Manhole <b>A6-13</b>	Length surveyed <b>327.2</b>	Year Renewed	Height <b>8</b>	Width <b>8</b>	Pipe Joint... <b>4</b>

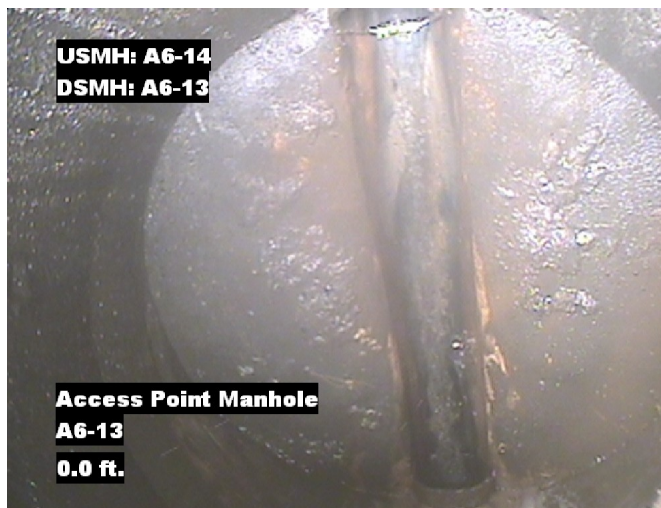
SPR <b>29</b>	MPR <b>7</b>	PO Number <b>4397-03</b>	Customer <b>GRW</b>
SPRI <b>2.9</b>	MPRI <b>3.5</b>	Work Order <b>4397-02</b>	Purpose <b>Pre-Rehabilitation Survey</b>
QSR <b>5241</b>	QMR <b>4131</b>		
OPR <b>36</b>	Surveyed By <b>Barry Rogers</b>	Direction <b>Upstream</b>	Date <b>20150810</b>
OPRI <b>3</b>	Certificate Number <b>U-1012-16405</b>	Pre-Cleaning <b>Jetting</b>	Time <b>12:44</b>
	Date Cleaned <b>20150810</b>	End Time <b>13:15</b>	Weather <b>Dry</b>
			Media label
			Additional Info

Distance	Condition	Cont. Dfct.	Values			Joint	Clock Position		Grade
			1st	2nd	%		At/From	To	
0.0 ft.	Access Point Manhole				0	<input type="checkbox"/>			
Remarks: A6-13									
0.0 ft.	Water Level				10	<input type="checkbox"/>			
11.5 ft.	Water Level Sag				40	<input type="checkbox"/>			3
14.5 ft.	Camera Underwater				0	<input type="checkbox"/>			4
27.3 ft.	Water Level				5	<input type="checkbox"/>			
34.0 ft.	Hole Soil Visible				0	<input type="checkbox"/>	9		5
49.4 ft.	Tap Factory Made		6		0	<input type="checkbox"/>	3		
86.3 ft.	Hole				0	<input type="checkbox"/>	9		3
89.3 ft.	Crack Multiple				0	<input type="checkbox"/>	7	5	3
90.7 ft.	Hole Soil Visible				0	<input type="checkbox"/>	9	12	5
90.7 ft.	Fracture Multiple				0	<input type="checkbox"/>	9	3	4
95.5 ft.	Crack Circumferential				0	<input type="checkbox"/>	12	3	1
108.3 ft.	Joint Offset Medium				0	<input type="checkbox"/>			1
113.0 ft.	Tap Factory Made		6		0	<input type="checkbox"/>	3		
119.6 ft.	Joint Offset Medium				0	<input type="checkbox"/>			1
155.0 ft.	Tap Factory Made		6		0	<input type="checkbox"/>	3		
191.1 ft.	Fracture Spiral				0	<input type="checkbox"/>	9	11	3
194.9 ft.	Hole				0	<input type="checkbox"/>	10		3
327.2 ft.	Survey Abandoned				0	<input type="checkbox"/>			
Remarks: MADE IT TO THE JOINT SEPARTED									

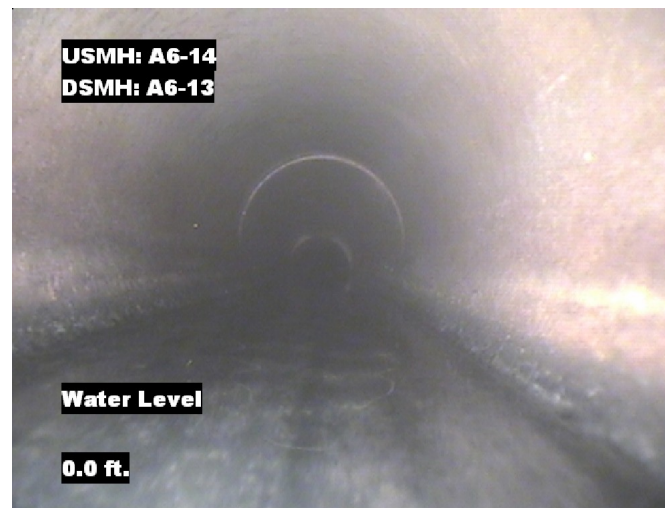


## Image Report 4/Page

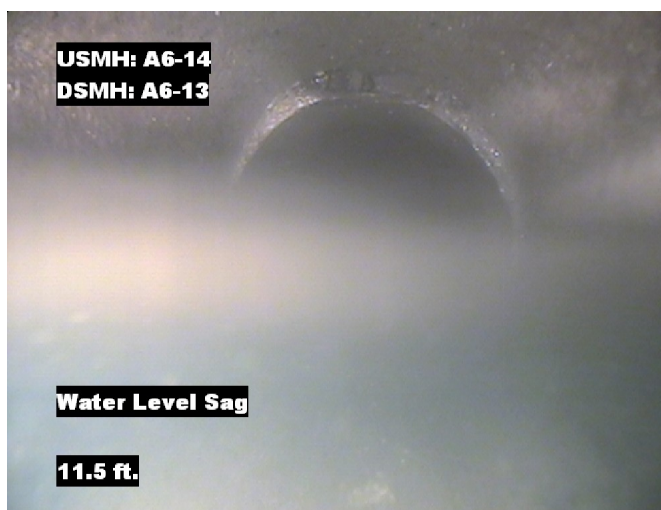
Pipe Segment Refere...	City	Street	Material	Location C...	Sewer Use
A6-14_A6-13	Oliver Springs	61 highway	Concrete Pipe (non-...	Main Highw...	Sanitary
Upstream MH	Total Length	Year Laid	Shape	Location Details	
A6-14	44.6		Circular		
DS Manhole	Length surveyed	Year Renewed	Height	Width	Pipe Joint...
A6-13	327.2		8	8	4



Distance: 0.0 ft. Grade: 0  
Condition: Access Point Manhole  
Remarks: A6-13



Distance: 0.0 ft. Grade: 0  
Condition: Water Level  
Remarks: N/A



Distance: 11.5 ft. Grade: 3  
Condition: Water Level Sag  
Remarks: N/A

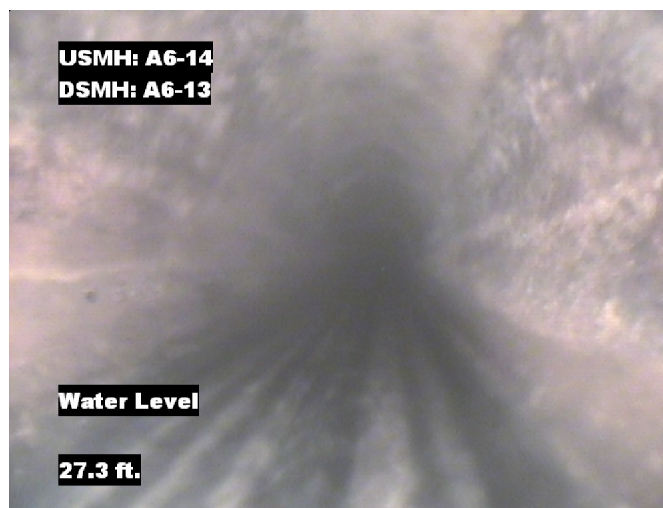


Distance: 14.5 ft. Grade: 4  
Condition: Camera Underwater  
Remarks: N/A

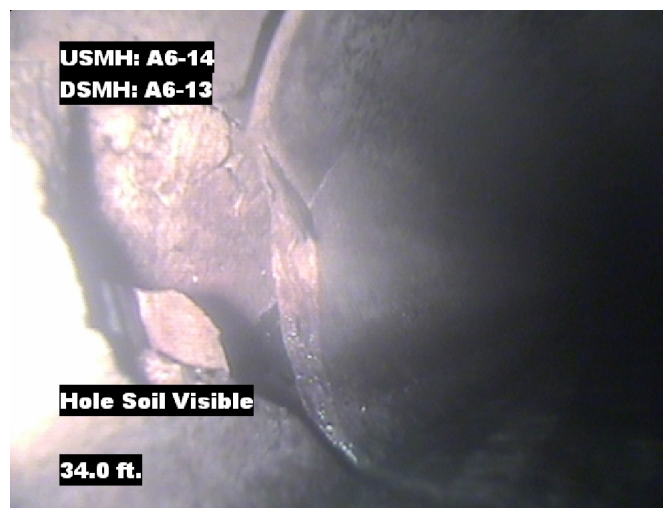


## Image Report 4/Page

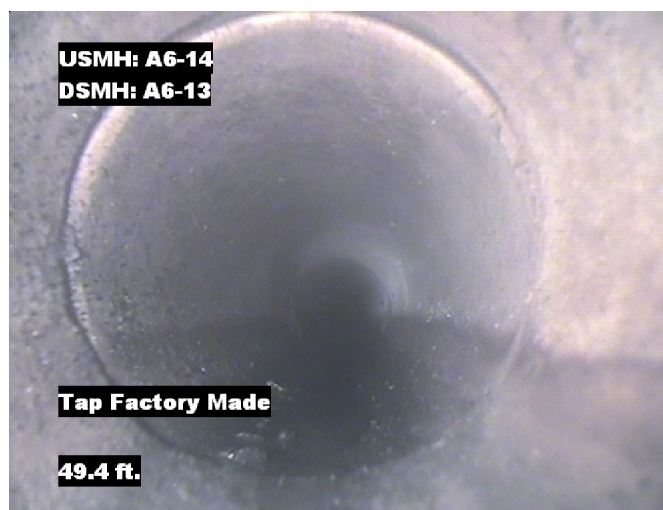
Pipe Segment Refere...	City	Street	Material	Location C...	Sewer Use
A6-14_A6-13	Oliver Springs	61 highway	Concrete Pipe (non-...	Main Highw...	Sanitary
Upstream MH	Total Length	Year Laid	Shape	Location Details	
A6-14	44.6		Circular		
DS Manhole	Length surveyed	Year Renewed	Height	Width	Pipe Joint...
A6-13	327.2		8	8	4



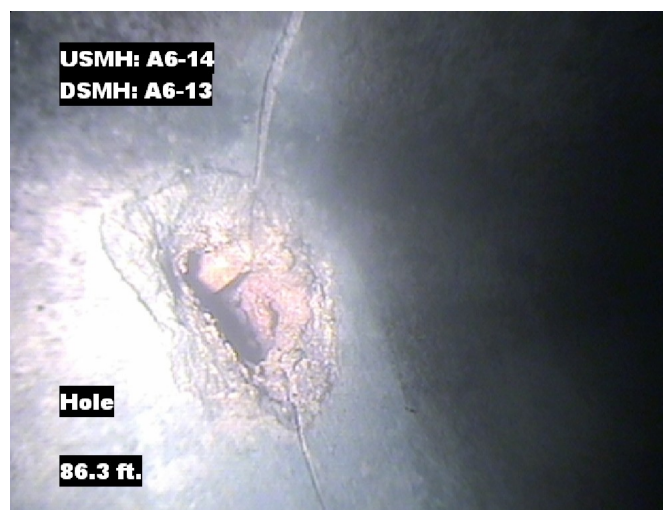
Distance: 27.3 ft. Grade: 0  
Condition: Water Level  
Remarks: N/A



Distance: 34.0 ft. Grade: 5  
Condition: Hole Soil Visible  
Remarks: N/A



Distance: 49.4 ft. Grade: 0  
Condition: Tap Factory Made  
Remarks: N/A



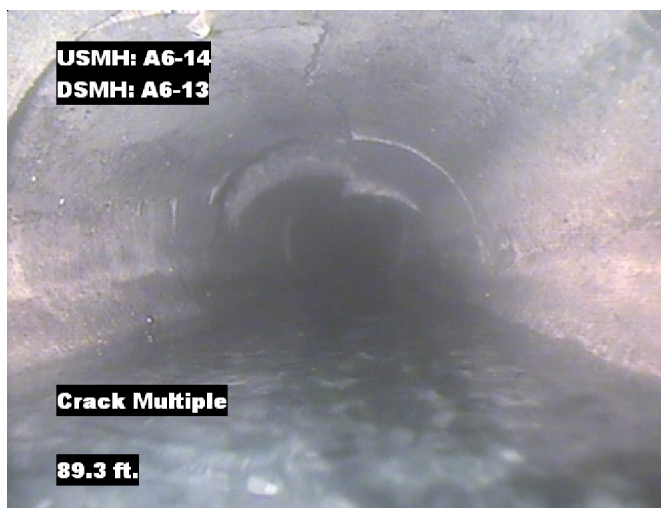
Distance: 86.3 ft. Grade: 3  
Condition: Hole  
Remarks: N/A



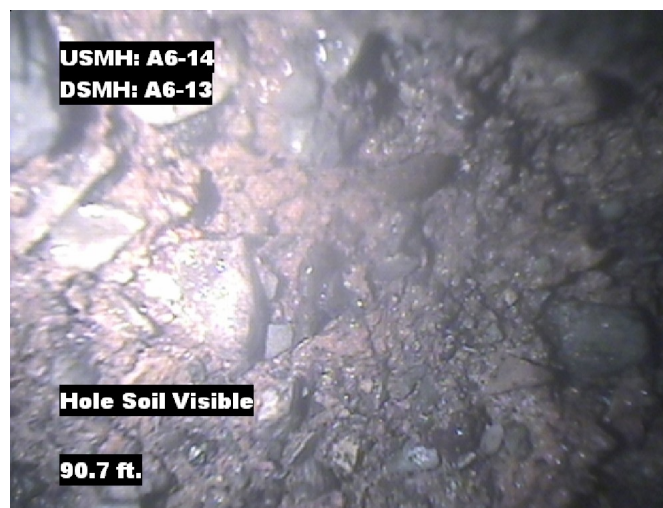


## Image Report 4/Page

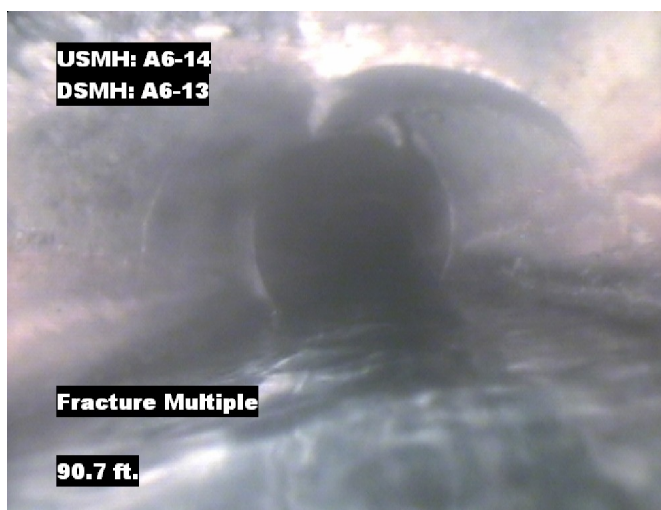
Pipe Segment Refere...	City	Street	Material	Location C...	Sewer Use
A6-14_A6-13	Oliver Springs	61 highway	Concrete Pipe (non-...	Main Highw...	Sanitary
Upstream MH A6-14	Total Length 44.6	Year Laid	Shape Circular	Location Details	
DS Manhole A6-13	Length surveyed 327.2	Year Renewed	Height 8	Width 8	Pipe Joint... 4



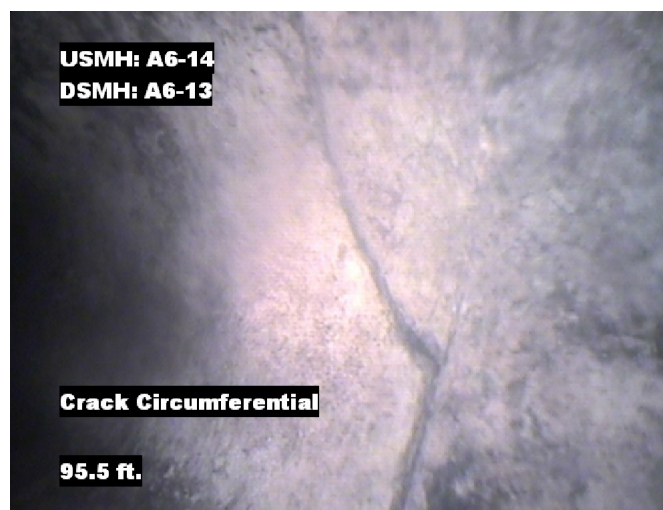
Distance: 89.3 ft. Grade: 3  
Condition: Crack Multiple  
Remarks: N/A



Distance: 90.7 ft. Grade: 5  
Condition: Hole Soil Visible  
Remarks: N/A



Distance: 90.7 ft. Grade: 4  
Condition: Fracture Multiple  
Remarks: N/A

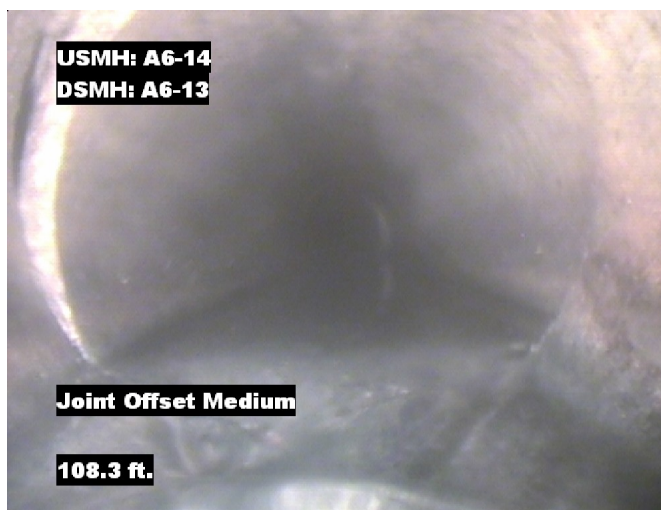


Distance: 95.5 ft. Grade: 1  
Condition: Crack Circumferential  
Remarks: N/A

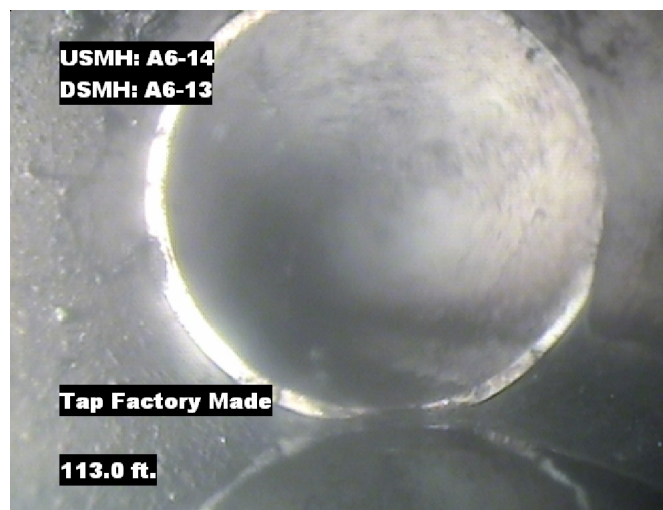


## Image Report 4/Page

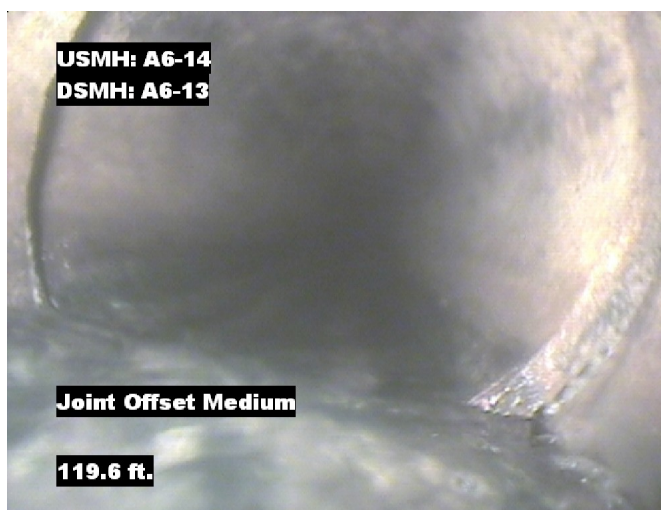
Pipe Segment Refere...	City	Street	Material	Location C...	Sewer Use
A6-14_A6-13	Oliver Springs	61 highway	Concrete Pipe (non-...	Main Highw...	Sanitary
Upstream MH A6-14	Total Length 44.6	Year Laid	Shape Circular	Location Details	
DS Manhole A6-13	Length surveyed 327.2	Year Renewed	Height 8	Width 8	Pipe Joint... 4



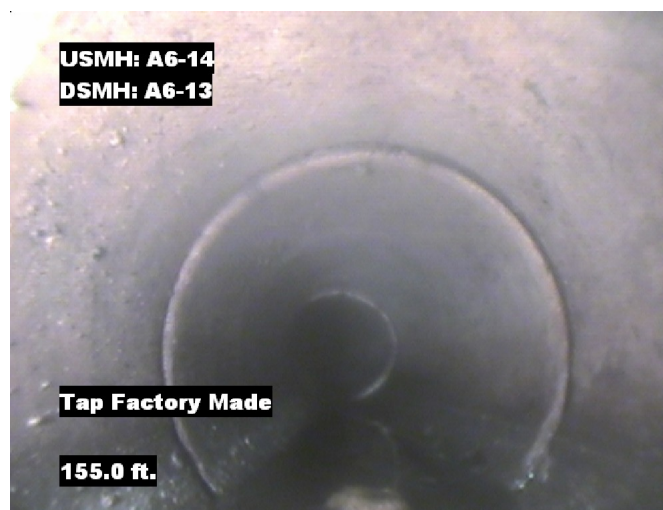
Distance: 108.3 ft. Grade: 1  
Condition: Joint Offset Medium  
Remarks: N/A



Distance: 113.0 ft. Grade: 0  
Condition: Tap Factory Made  
Remarks: N/A



Distance: 119.6 ft. Grade: 1  
Condition: Joint Offset Medium  
Remarks: N/A



Distance: 155.0 ft. Grade: 0  
Condition: Tap Factory Made  
Remarks: N/A



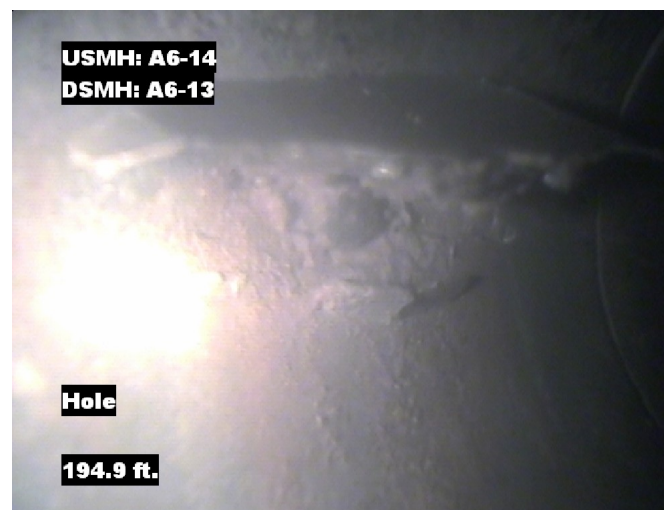


## Image Report 4/Page

Pipe Segment Refere...	City	Street	Material	Location C...	Sewer Use
<b>A6-14_A6-13</b>	<b>Oliver Springs</b>	<b>61 highway</b>	<b>Concrete Pipe (non-...</b>	<b>Main Highw...</b>	<b>Sanitary</b>
<b>Upstream MH</b>	Total Length	Year Laid	<b>Shape</b>	Location Details	
<b>A6-14</b>	<b>44.6</b>		<b>Circular</b>		
<b>DS Manhole</b>	<b>Length surveyed</b>	Year Renewed	<b>Height</b>	Width	Pipe Joint...
<b>A6-13</b>	<b>327.2</b>		<b>8</b>	<b>8</b>	<b>4</b>



Distance: 191.1 ft. Grade: 3  
Condition: Fracture Spiral  
Remarks: N/A



Distance: 194.9 ft. Grade: 3  
Condition: Hole  
Remarks: N/A



Distance: 327.2 ft. Grade: 0  
Condition: Survey Abandoned  
Remarks: MADE IT TO THE JOINT SEPARTED



## PACP Conditions

Pipe Segment Refere... <b>A6-14_A6-13</b>	City <b>Oliver Springs</b>	Street <b>61 highway</b>	Material <b>Concrete Pipe (non-...</b>	Location C... <b>Main Highw...</b>	Sewer Use <b>Sanitary</b>
Upstream MH <b>A6-14</b>	Total Length <b>44.6</b>	Year Laid	Shape <b>Circular</b>	Location Details	
DS Manhole <b>A6-13</b>	Length surveyed <b>327.2</b>	Year Renewed	Height <b>8</b>	Width <b>8</b>	Pipe Joint... <b>4</b>
SPR <b>29</b>	MPR <b>7</b>	PO Number <b>4397-03</b>		Customer <b>GRW</b>	
SPRI <b>2.9</b>	MPRI <b>3.5</b>	Work Order <b>4397-02</b>		Purpose <b>Pre-Rehabilitation Survey</b>	
QSR <b>5241</b>	QMR <b>4131</b>				
OPR <b>36</b>	Surveyed By <b>Barry Rogers</b>	Direction <b>Upstream</b>	Date <b>20150810</b>	Media label	
OPRI <b>3</b>	Certificate Number <b>U-1012-16405</b>	Pre-Cleaning <b>Jetting</b>	Time <b>12:44</b>	Weather <b>Dry</b>	
Date Cleaned <b>20150810</b>			End Time <b>13:15</b>	Additional Info	

			Structural Ratings			O & M Ratings			Combined Ratings		
			Grade Rating	No. Occur.	Rating	Grade Rating	No. Occur.	Rating	Grade Rating	No. Occur.	Rating
Normal Defects											
Continuous Defects			1	3	3	1	0	0	1	3	3
			2	0	0	2	0	0	2	0	0
			3	4	12	3	1	3	3	5	15
			4	1	4	4	1	4	4	2	8
			5	2	10	5	0	0	5	2	10
Code	ID	Length									