



## Defect Listing

Pipe Segment Refere... <b>A6-12_A6-11</b>	City <b>Oliver Springs</b>	Street <b>Highway 61</b>	Material <b>Concrete Pipe (non-...</b>	Location C... <b>Main Highw...</b>	Sewer Use <b>Sanitary</b>
Upstream MH <b>A6-12</b>	Total Length <b>253.7</b>	Year Laid	Shape <b>Circular</b>	Location Details	
DS Manhole <b>A6-11</b>	Length surveyed <b>253.7</b>	Year Renewed	Height <b>8</b>	Width <b>8</b>	Pipe Joint... <b>4</b>

SPR <b>N/A</b>	MPR <b>N/A</b>	PO Number <b>4397-03</b>	Customer <b>GRW</b>
SPRI <b>N/A</b>	MPRI <b>N/A</b>	Work Order <b>4397-02</b>	Purpose <b>Pre-Rehabilitation Survey</b>
QSR <b>N/A</b>	QMR <b>N/A</b>		
OPR <b>N/A</b>	Surveyed By <b>Charlie Gordon</b>	Direction <b>Downstream</b>	Date <b>20150820</b>
OPRI <b>N/A</b>	Certificate Number <b>U-615-07000491</b>	Pre-Cleaning <b>Jetting</b>	Time <b>10:28</b>
	Date Cleaned <b>20150820</b>	End Time <b>10:42</b>	Weather <b>Light Rain</b>
			Media label
			Additional Info

Distance	Condition	Cont. Dfct.	Values			Joint	Clock Position		Grade
			1st	2nd	%		At/From	To	
0.0 ft.	Access Point Manhole				0	<input type="checkbox"/>			
Remarks: A6-12									
0.0 ft.	Water Level				10	<input type="checkbox"/>			
22.4 ft.	Tap Factory Made Active		6		0	<input type="checkbox"/>	9		
90.9 ft.	Tap Factory Made Active		6		0	<input type="checkbox"/>	9		
151.3 ft.	Tap Factory Made Active		6		0	<input type="checkbox"/>	9		
182.1 ft.	Tap Factory Made		6		0	<input type="checkbox"/>	9		
252.3 ft.	Water Level				10	<input type="checkbox"/>			
253.7 ft.	Access Point Manhole				0	<input type="checkbox"/>			
Remarks: A6-11									

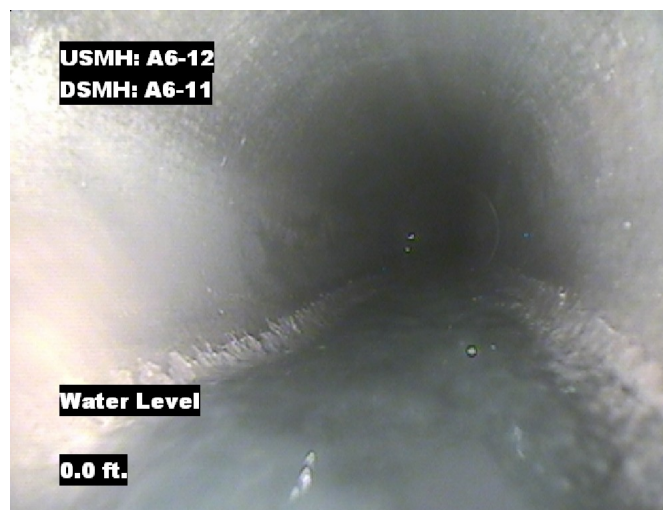


## Image Report 4/Page

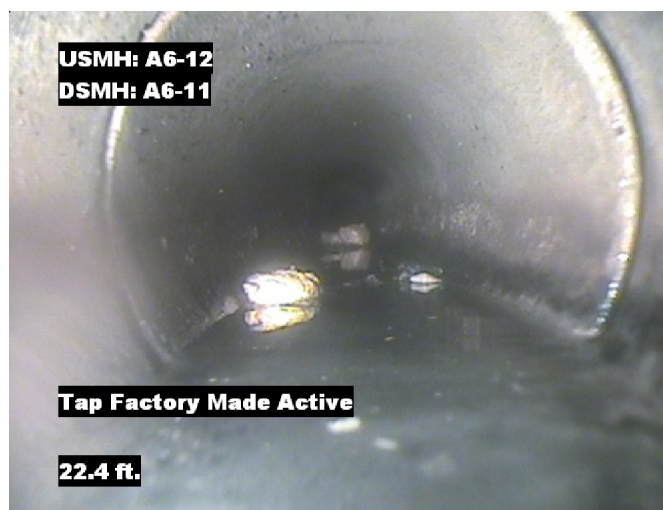
Pipe Segment Refere...	City	Street	Material	Location C...	Sewer Use
<b>A6-12_A6-11</b>	<b>Oliver Springs</b>	<b>Highway 61</b>	<b>Concrete Pipe (non-...</b>	<b>Main Highw...</b>	<b>Sanitary</b>
<b>Upstream MH</b>	Total Length	Year Laid	<b>Shape</b>	Location Details	
<b>A6-12</b>	<b>253.7</b>		<b>Circular</b>		
<b>DS Manhole</b>	<b>Length surveyed</b>	Year Renewed	<b>Height</b>	Width	Pipe Joint...
<b>A6-11</b>	<b>253.7</b>		<b>8</b>	<b>8</b>	<b>4</b>



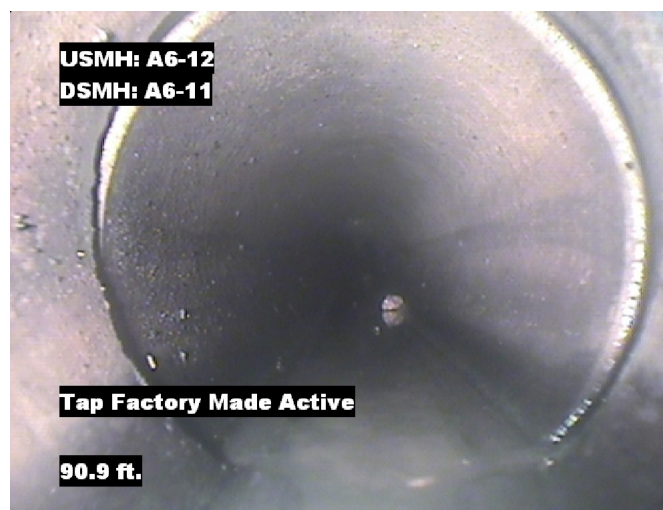
Distance: 0.0 ft. Grade: 0  
Condition: Access Point Manhole  
Remarks: A6-12



Distance: 0.0 ft. Grade: 0  
Condition: Water Level  
Remarks: N/A



Distance: 22.4 ft. Grade: 0  
Condition: Tap Factory Made Active  
Remarks: N/A

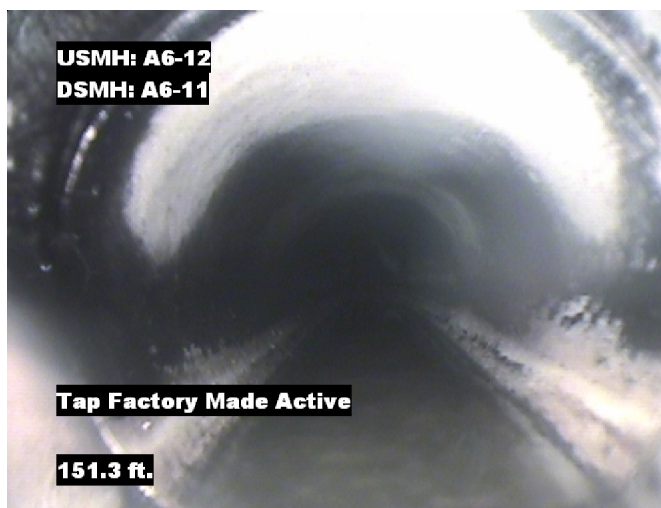


Distance: 90.9 ft. Grade: 0  
Condition: Tap Factory Made Active  
Remarks: N/A

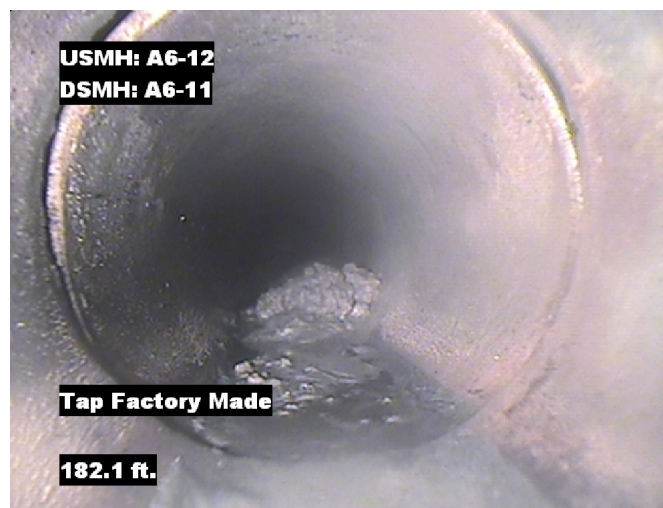


## Image Report 4/Page

Pipe Segment Refere...	City	Street	Material	Location C...	Sewer Use
A6-12_A6-11	Oliver Springs	Highway 61	Concrete Pipe (non-...	Main Highw...	Sanitary
Upstream MH A6-12	Total Length 253.7	Year Laid	Shape Circular	Location Details	
DS Manhole A6-11	Length surveyed 253.7	Year Renewed	Height 8	Width 8	Pipe Joint... 4



Distance: 151.3 ft. Grade: 0  
Condition: Tap Factory Made Active  
Remarks: N/A



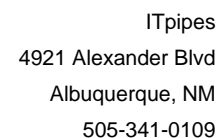
Distance: 182.1 ft. Grade: 0  
Condition: Tap Factory Made  
Remarks: N/A



Distance: 252.3 ft. Grade: 0  
Condition: Water Level  
Remarks: N/A



Distance: 253.7 ft. Grade: 0  
Condition: Access Point Manhole  
Remarks: A6-11



## Albuquerque, NM

SPR	N/A	MPR	N/A	PO Number		Customer	
SPRI	N/A	MPRI	N/A	4397-03		GRW	
QSR	N/A	QMR	N/A	Work Order		Purpose	
				4397-02		Pre-Rehabilitation Survey	
OPR		Surveyed By		Direction	Date	Media label	
N/A		Charlie Gordon		Downstream	20150820		
OPRI		Certificate Number		Pre-Cleaning	Time	Weather	
N/A		U-615-07000491		Jetting	10:28	Light Rain	
Date Cleaned				End Time		Additional Info	
20150820				10:42			

Page 1 of 1