



## Defect Listing

Pipe Segment Refere... <b>A6-10_A6-9</b>	City <b>Oliver Springs</b>	Street <b>61 Highway</b>	Material <b>Fibreglass Reinforc...</b>	Location C... <b>Main Highw...</b>	Sewer Use <b>Sanitary</b>
Upstream MH <b>A6-10</b>	Total Length <b>266.8</b>	Year Laid	Shape <b>Circular</b>	Location Details	
DS Manhole <b>A6-9</b>	Length surveyed <b>266.8</b>	Year Renewed	Height <b>8</b>	Width <b>8</b>	Pipe Joint... <b>N/A</b>

SPR <b>N/A</b>	MPR <b>N/A</b>	PO Number <b>4397-03</b>		Customer <b>GRW</b>	
SPRI <b>N/A</b>	MPRI <b>N/A</b>	Work Order <b>4397-02</b>		Purpose <b>Pre-Rehabilitation Survey</b>	
QSR <b>N/A</b>	QMR <b>N/A</b>				
OPR <b>N/A</b>	Surveyed By <b>Barry Rogers</b>	Direction <b>Downstream</b>	Date <b>20150810</b>	Media label	
OPRI <b>N/A</b>	Certificate Number <b>U-1012-16405</b>	Pre-Cleaning <b>Jetting</b>	Time <b>14:11</b>	Weather <b>Dry</b>	
Date Cleaned <b>20150810</b>			End Time <b>14:25</b>	Additional Info	

Distance	Condition	Cont. Dfct.	Values			Joint	Clock Position		Grade
			1st	2nd	%		At/From	To	
0.0 ft.	Access Point Manhole				0	<input type="checkbox"/>			
Remarks: A6-10									
0.0 ft.	Water Level				5	<input type="checkbox"/>			
105.8 ft.	Tap Factory Made		6		0	<input type="checkbox"/>	9		
265.9 ft.	Water Level				5	<input type="checkbox"/>			
266.8 ft.	Access Point Manhole				0	<input type="checkbox"/>			
Remarks: A6-9									

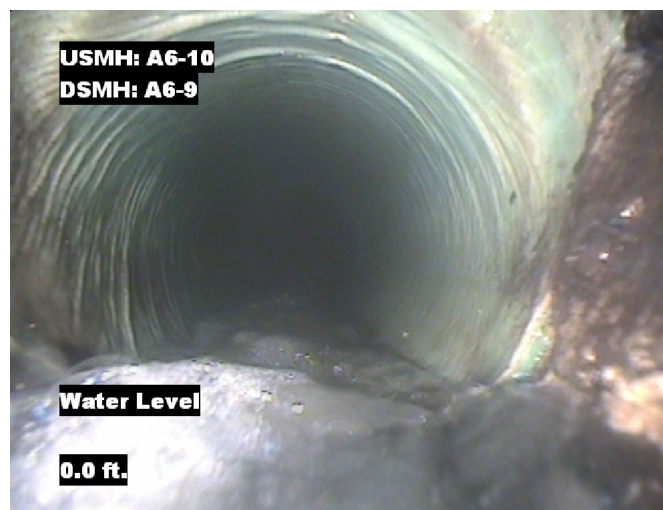


## Image Report 4/Page

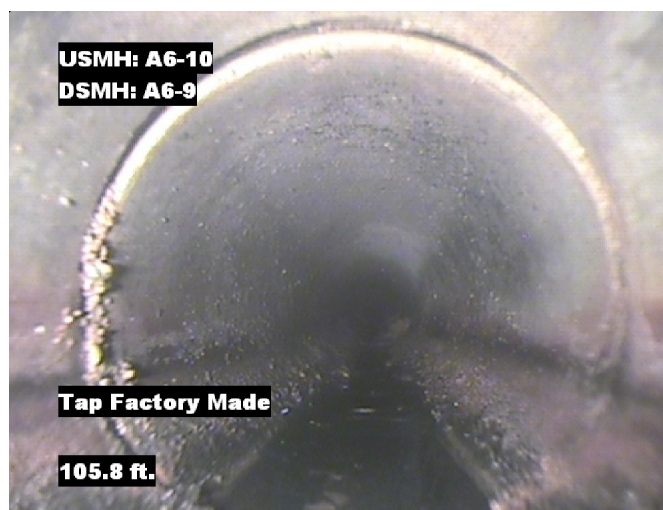
Pipe Segment Refere...	City	Street	Material	Location C...	Sewer Use
A6-10_A6-9	Oliver Springs	61 Highway	Fibreglass Reinforc...	Main Highw...	Sanitary
Upstream MH A6-10	Total Length 266.8	Year Laid	Shape Circular	Location Details	
DS Manhole A6-9	Length surveyed 266.8	Year Renewed	Height 8	Width 8	Pipe Joint... N/A



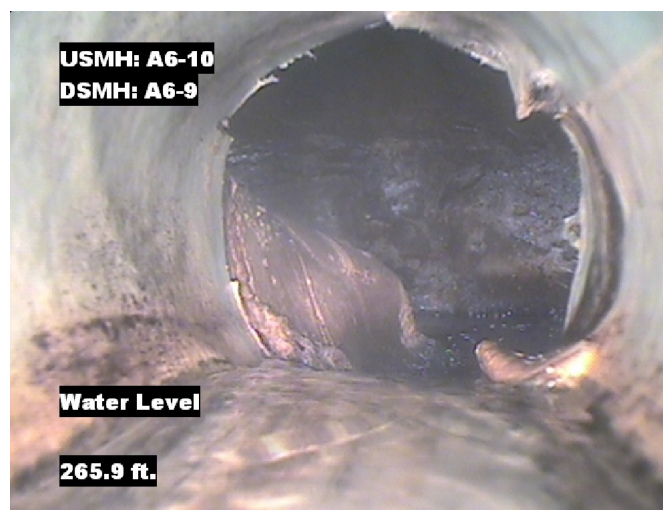
Distance: 0.0 ft. Grade: 0  
Condition: Access Point Manhole  
Remarks: A6-10



Distance: 0.0 ft. Grade: 0  
Condition: Water Level  
Remarks: N/A



Distance: 105.8 ft. Grade: 0  
Condition: Tap Factory Made  
Remarks: N/A

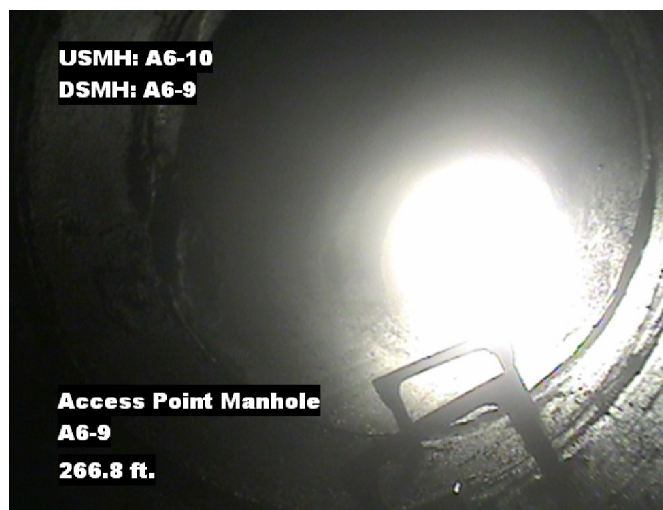


Distance: 265.9 ft. Grade: 0  
Condition: Water Level  
Remarks: N/A



## Image Report 4/Page

Pipe Segment Refere...	City	Street	Material	Location C...	Sewer Use
<b>A6-10_A6-9</b>	<b>Oliver Springs</b>	<b>61 Highway</b>	<b>Fibreglass Reinforc...</b>	<b>Main Highw...</b>	<b>Sanitary</b>
Upstream MH	Total Length	Year Laid	Shape	Location Details	
<b>A6-10</b>	<b>266.8</b>		<b>Circular</b>		
DS Manhole	Length surveyed	Year Renewed	Height	Width	Pipe Joint...
<b>A6-9</b>	<b>266.8</b>		<b>8</b>	<b>8</b>	<b>N/A</b>



Distance: 266.8 ft.      Grade: 0  
Condition: Access Point Manhole  
Remarks: A6-9



Pipe Segment Refere... A6-10_A6-9	City Oliver Springs	Street 61 Highway	Material Fibreglass Reinforc...		Location C... Main Highw...	Sewer Use Sanitary
Upstream MH A6-10	Total Length 266.8	Year Laid	Shape Circular		Location Details	
DS Manhole A6-9	Length surveyed 266.8	Year Renewed	Height 8	Width 8	Pipe Joint... N/A	
SPR N/A	MPR N/A	PO Number 4397-03			Customer GRW	
SPRI N/A	MPRI N/A	Work Order 4397-02			Purpose	
QSR N/A	QMR N/A				Pre-Rehabilitation Survey	
OPR N/A	Surveyed By Barry_Rogers	Direction Downstream	Date 20150810		Media label	
OPRI N/A	Certificate Number U-1012-16405	Pre-Cleaning Jetting	Time 14:11		Weather Dry	
Date Cleaned 20150810			End Time 14:25		Additional Info	

[illegible]