



## Defect Listing

Pipe Segment Refere... <b>A42-1_A6-19</b>	City <b>Oliver Springs</b>	Street <b>Center Rd</b>	Material <b>Concrete Pipe (non-...</b>	Location C... <b>Light High...</b>	Sewer Use <b>Sanitary</b>
Upstream MH <b>A42-1</b>	Total Length <b>105.6</b>	Year Laid	Shape <b>Circular</b>	Location Details	
DS Manhole <b>A6-19</b>	Length surveyed <b>105.6</b>	Year Renewed	Height <b>8</b>	Width <b>8</b>	Pipe Joint... <b>4</b>

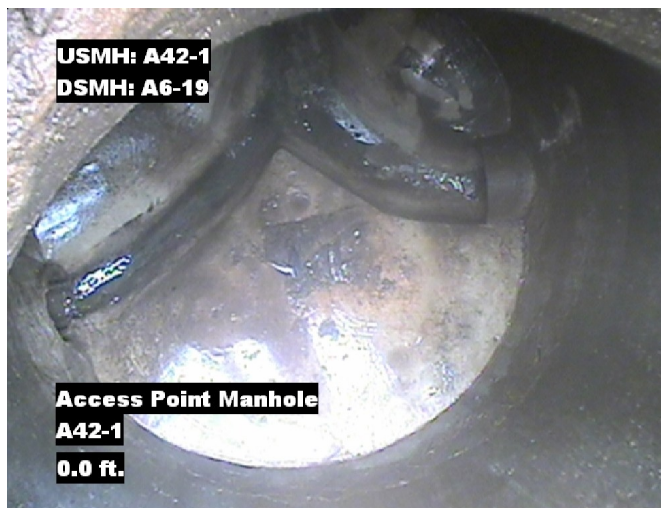
SPR <b>2</b>	MPR <b>1</b>	PO Number <b>4397-03</b>	Customer <b>GRW</b>
SPRI <b>2</b>	MPRI <b>1</b>	Work Order <b>4397-02</b>	Purpose <b>Pre-Rehabilitation Survey</b>
QSR <b>2100</b>	QMR <b>1100</b>		
OPR <b>3</b>	Surveyed By <b>Charlie Gordon</b>	Direction <b>Downstream</b>	Date <b>20150820</b>
OPRI <b>1.5</b>	Certificate Number <b>U-615-07000491</b>	Pre-Cleaning <b>Jetting</b>	Time <b>12:45</b>
	Date Cleaned <b>20150820</b>	End Time <b>12:55</b>	Weather <b>Light Rain</b>
			Media label
			Additional Info

Distance	Condition	Cont. Dfct.	Values			Joint	Clock Position		Grade
			1st	2nd	%		At/From	To	
0.0 ft.	Access Point Manhole				0	<input type="checkbox"/>			
Remarks: A42-1									
0.0 ft.	Water Level				5	<input type="checkbox"/>			
13.5 ft.	Tap Factory Made		6		0	<input type="checkbox"/>	9		
32.1 ft.	Tap Factory Made Active		6		0	<input type="checkbox"/>	9		
83.3 ft.	Tap Factory Made		6		0	<input type="checkbox"/>	3		
105.5 ft.	Joint Offset Large					<input type="checkbox"/>			2
105.6 ft.	Roots Fine Joint				0	<input checked="" type="checkbox"/>	9		1
105.6 ft.	Survey Abandoned				0	<input type="checkbox"/>			
Remarks: Reverse need can not pass JOL									



## Image Report 4/Page

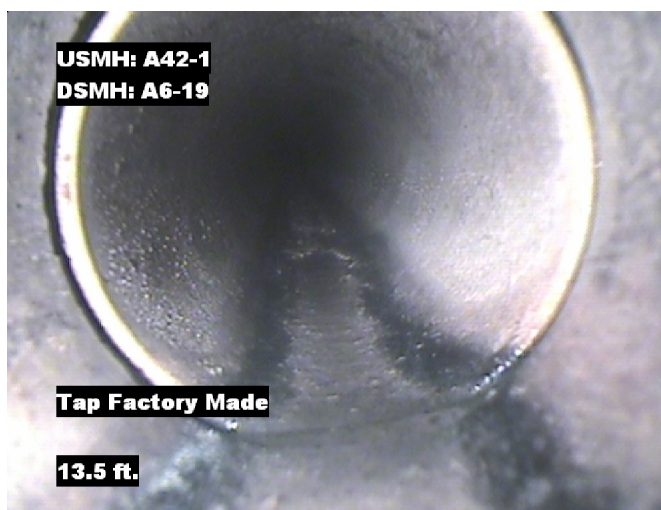
Pipe Segment Refere...	City	Street	Material	Location C...	Sewer Use
A42-1_A6-19	Oliver Springs	Center Rd	Concrete Pipe (non-...	Light High...	Sanitary
Upstream MH A42-1	Total Length 105.6	Year Laid	Shape Circular	Location Details	
DS Manhole A6-19	Length surveyed 105.6	Year Renewed	Height 8	Width 8	Pipe Joint... 4



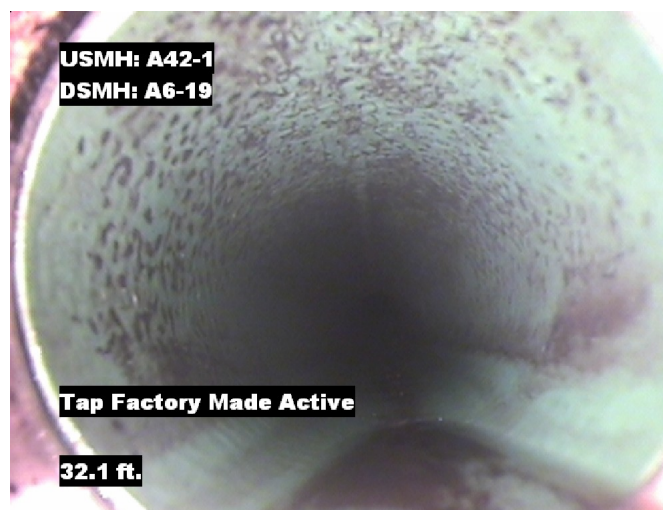
Distance: 0.0 ft. Grade: 0  
Condition: Access Point Manhole  
Remarks: A42-1



Distance: 0.0 ft. Grade: 0  
Condition: Water Level  
Remarks: N/A



Distance: 13.5 ft. Grade: 0  
Condition: Tap Factory Made  
Remarks: N/A

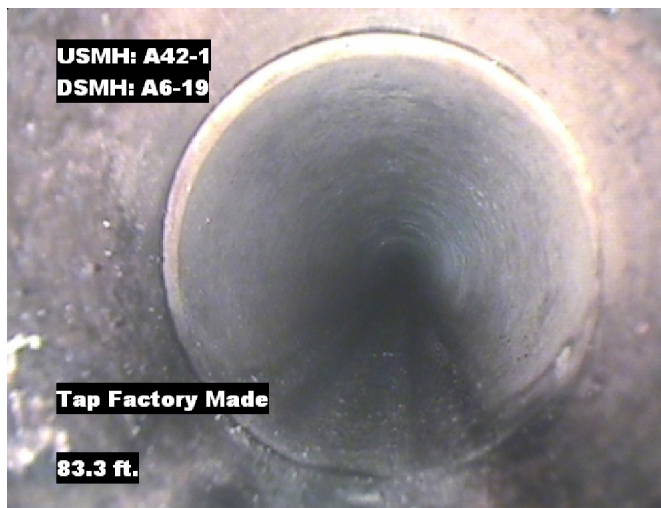


Distance: 32.1 ft. Grade: 0  
Condition: Tap Factory Made Active  
Remarks: N/A

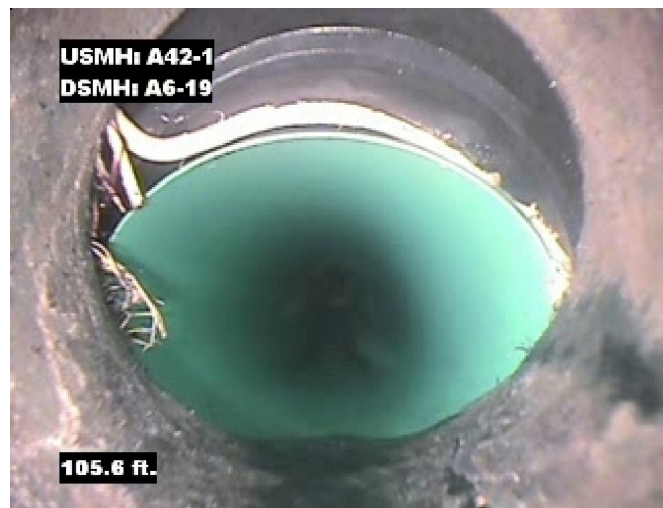


## Image Report 4/Page

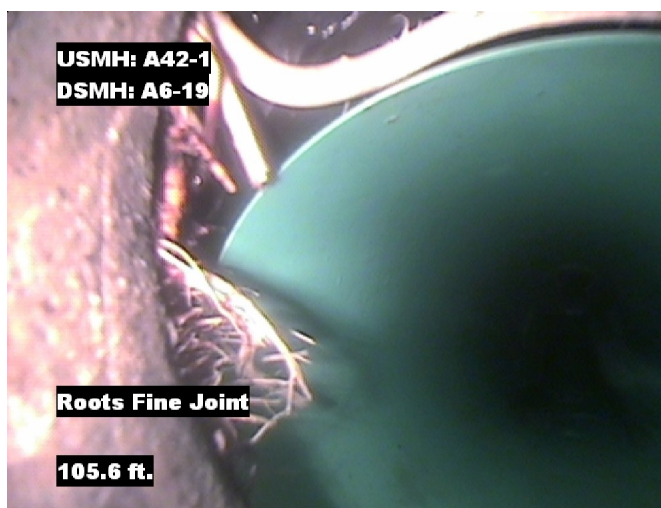
Pipe Segment Refere... <b>A42-1_A6-19</b>	<b>City</b> <b>Oliver Springs</b>	<b>Street</b> <b>Center Rd</b>	<b>Material</b> <b>Concrete Pipe (non-...</b>		<b>Location C...</b> <b>Light High...</b>	<b>Sewer Use</b> <b>Sanitary</b>
<b>Upstream MH</b> <b>A42-1</b>	Total Length <b>105.6</b>	Year Laid	<b>Shape</b> <b>Circular</b>		Location Details	
<b>DS Manhole</b> <b>A6-19</b>	<b>Length surveyed</b> <b>105.6</b>	Year Renewed	<b>Height</b> <b>8</b>	Width <b>8</b>	Pipe Joint... <b>4</b>	



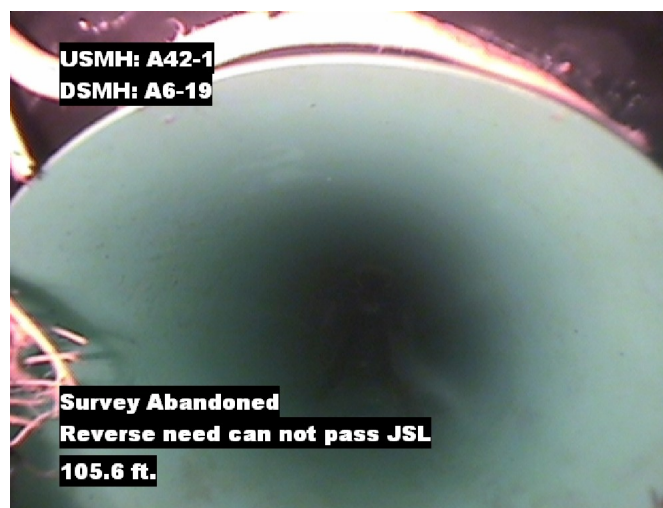
Distance: 83.3 ft. Grade: 0  
Condition: Tap Factory Made  
Remarks: N/A



Distance: 105.5 ft. Grade: 2  
Condition: Joint Offset Large  
Remarks: N/A



Distance: 105.6 ft. Grade: 1  
Condition: Roots Fine Joint  
Remarks: N/A



Distance: 105.6 ft. Grade: 0  
Condition: Survey Abandoned  
Remarks: Reverse need can not pass JOL



## PACP Conditions

Pipe Segment Refere... <b>A42-1_A6-19</b>	City <b>Oliver Springs</b>	Street <b>Center Rd</b>	Material <b>Concrete Pipe (non-...</b>	Location C... <b>Light High...</b>	Sewer Use <b>Sanitary</b>
Upstream MH <b>A42-1</b>	Total Length <b>105.6</b>	Year Laid	Shape <b>Circular</b>	Location Details	
DS Manhole <b>A6-19</b>	Length surveyed <b>105.6</b>	Year Renewed	Height <b>8</b>	Width <b>8</b>	Pipe Joint... <b>4</b>
SPR <b>2</b>	MPR <b>1</b>	PO Number <b>4397-03</b>		Customer <b>GRW</b>	
SPRI <b>2</b>	MPRI <b>1</b>	Work Order <b>4397-02</b>		Purpose <b>Pre-Rehabilitation Survey</b>	
QSR <b>2100</b>	QMR <b>1100</b>				
OPR <b>3</b>	Surveyed By <b>Charlie Gordon</b>	Direction <b>Downstream</b>	Date <b>20150820</b>	Media label	
OPRI <b>1.5</b>	Certificate Number <b>U-615-07000491</b>	Pre-Cleaning <b>Jetting</b>	Time <b>12:45</b>	Weather <b>Light Rain</b>	
Date Cleaned <b>20150820</b>			End Time <b>12:55</b>	Additional Info	

			Structural Ratings			O & M Ratings			Combined Ratings		
			Grade Rating	No. Occur.	Rating	Grade Rating	No. Occur.	Rating	Grade Rating	No. Occur.	Rating
Normal Defects											
Continuous Defects			1	0	0	1	1	1	1	1	1
			2	1	2	2	0	0	2	1	2
			3	0	0	3	0	0	3	0	0
			4	0	0	4	0	0	4	0	0
			5	0	0	5	0	0	5	0	0
Code	ID	Length									