



## Defect Listing

Pipe Segment Refere... <b>A40-1_A6-15</b>	City <b>Oliver Springs</b>	Street <b>Highway 61</b>	Material <b>Concrete Pipe (non-...</b>	Location C... <b>Main Highw...</b>	Sewer Use <b>Sanitary</b>
Upstream MH <b>A40-1</b>	Total Length <b>188.3</b>	Year Laid	Shape <b>Circular</b>	Location Details	
DS Manhole <b>A6-15</b>	Length surveyed <b>188.3</b>	Year Renewed	Height <b>8</b>	Width <b>8</b>	Pipe Joint... <b>4</b>

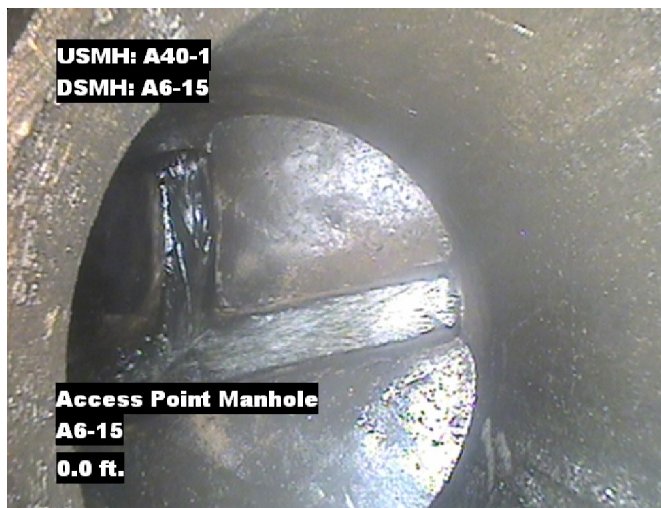
SPR <b>4</b>	MPR <b>2</b>	PO Number <b>4397-03</b>	Customer <b>GRW</b>
SPRI <b>2</b>	MPRI <b>2</b>	Work Order <b>4397-02</b>	Purpose <b>Pre-Rehabilitation Survey</b>
QSR <b>2200</b>	QMR <b>2100</b>		
OPR <b>6</b>	Surveyed By <b>Charlie Gordon</b>	Direction <b>Upstream</b>	Date <b>20150820</b>
OPRI <b>2</b>	Certificate Number <b>U-615-07000491</b>	Pre-Cleaning <b>Jetting</b>	Time <b>09:53</b>
	Date Cleaned <b>20150820</b>	End Time <b>10:14</b>	Weather <b>Light Rain</b>
			Media label
			Additional Info

Distance	Condition	Cont. Dfct.	Values			Joint	Clock Position		Grade
			1st	2nd	%		At/From	To	
0.0 ft.	Access Point Manhole				0	<input type="checkbox"/>			
Remarks: A6-15									
0.0 ft.	Water Level				5	<input type="checkbox"/>			
29.0 ft.	Fracture Circumferential				0	<input type="checkbox"/>	7	5	2
29.5 ft.	Fracture Circumferential				0	<input type="checkbox"/>	9	3	2
56.0 ft.	Material Change				0	<input type="checkbox"/>			
Remarks: DIP TO CP									
56.3 ft.	Water Level Sag				15	<input type="checkbox"/>			2
58.2 ft.	Tap Factory Made Capped		6		0	<input type="checkbox"/>	9		
186.9 ft.	Water Level				10	<input type="checkbox"/>			
188.3 ft.	Access Point Manhole				0	<input type="checkbox"/>			
Remarks: A40-1									

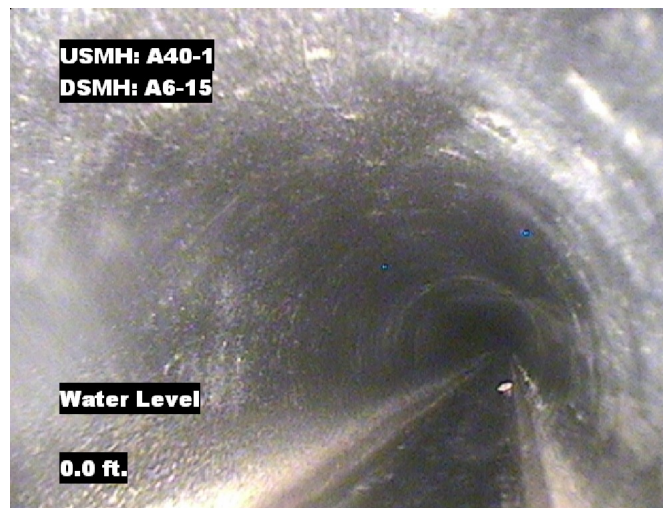


## Image Report 4/Page

Pipe Segment Refere... <b>A40-1_A6-15</b>	<b>City</b> <b>Oliver Springs</b>	<b>Street</b> <b>Highway 61</b>	<b>Material</b> <b>Concrete Pipe (non-...</b>		<b>Location C...</b> <b>Main Highw...</b>	<b>Sewer Use</b> <b>Sanitary</b>
<b>Upstream MH</b> <b>A40-1</b>	Total Length <b>188.3</b>	Year Laid	<b>Shape</b> <b>Circular</b>		Location Details	
<b>DS Manhole</b> <b>A6-15</b>	<b>Length surveyed</b> <b>188.3</b>	Year Renewed	<b>Height</b> <b>8</b>	Width <b>8</b>	Pipe Joint...	



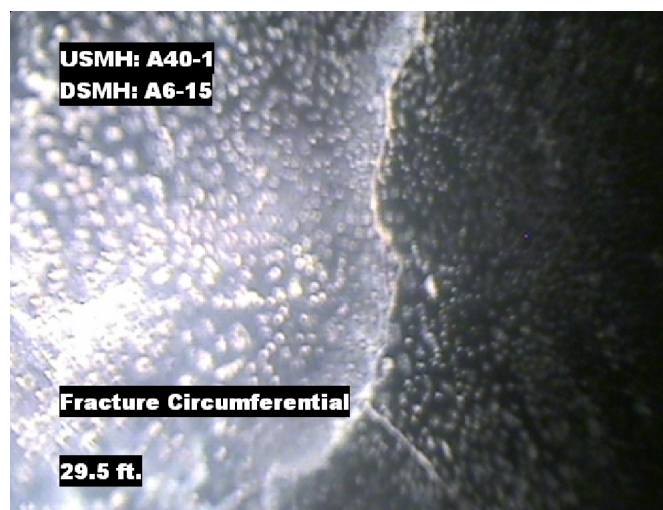
Distance: 0.0 ft. Grade: 0  
Condition: Access Point Manhole  
Remarks: A6-15



Distance: 0.0 ft. Grade: 0  
Condition: Water Level  
Remarks: N/A



Distance: 29.0 ft. Grade: 2  
Condition: Fracture Circumferential  
Remarks: N/A

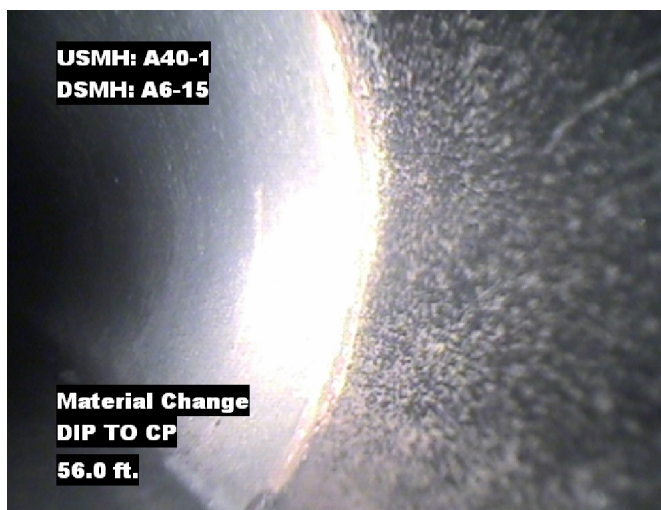


Distance: 29.5 ft. Grade: 2  
Condition: Fracture Circumferential  
Remarks: N/A



## Image Report 4/Page

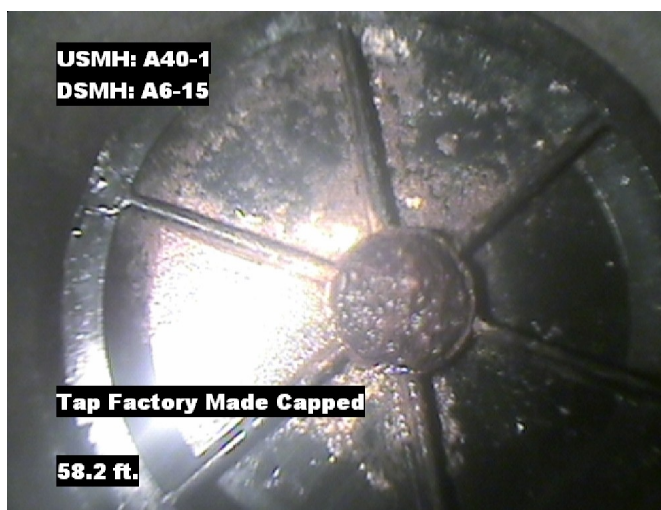
Pipe Segment Refere...	City	Street	Material	Location C...	Sewer Use
A40-1_A6-15	Oliver Springs	Highway 61	Concrete Pipe (non-...	Main Highw...	Sanitary
Upstream MH A40-1	Total Length 188.3	Year Laid	Shape Circular	Location Details	
DS Manhole A6-15	Length surveyed 188.3	Year Renewed	Height 8	Width 8	Pipe Joint... 4



Distance: 56.0 ft. Grade: 0  
Condition: Material Change  
Remarks: DIP TO CP



Distance: 56.3 ft. Grade: 2  
Condition: Water Level Sag  
Remarks: N/A



Distance: 58.2 ft. Grade: 0  
Condition: Tap Factory Made Capped  
Remarks: N/A



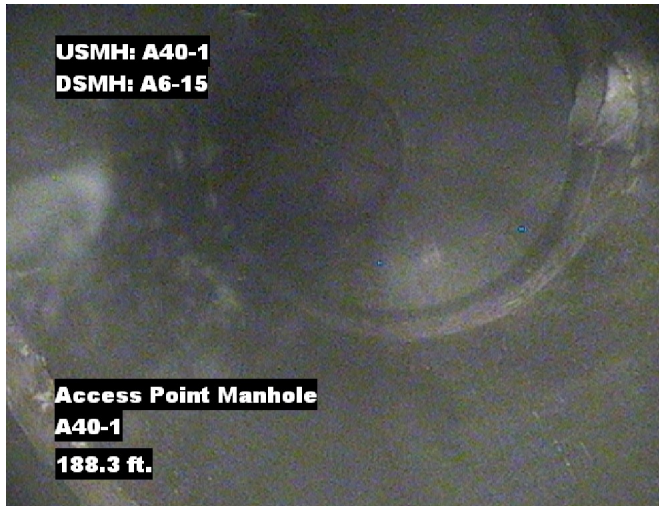
Distance: 186.9 ft. Grade: 0  
Condition: Water Level  
Remarks: N/A





## Image Report 4/Page

Pipe Segment Refere...	City	Street	Material	Location C...	Sewer Use
<b>A40-1_A6-15</b>	<b>Oliver Springs</b>	<b>Highway 61</b>	<b>Concrete Pipe (non-...</b>	<b>Main Highw...</b>	<b>Sanitary</b>
<b>Upstream MH</b> <b>A40-1</b>	Total Length <b>188.3</b>	Year Laid	<b>Shape</b> <b>Circular</b>	Location Details	
<b>DS Manhole</b> <b>A6-15</b>	<b>Length surveyed</b> <b>188.3</b>	Year Renewed	<b>Height</b> <b>8</b>	Width <b>8</b>	Pipe Joint... <b>4</b>



Distance: 188.3 ft.      Grade: 0  
Condition: Access Point Manhole  
Remarks: A40-1



## PACP Conditions

Pipe Segment Refere... <b>A40-1_A6-15</b>	City <b>Oliver Springs</b>	Street <b>Highway 61</b>	Material <b>Concrete Pipe (non-...</b>	Location C... <b>Main Highw...</b>	Sewer Use <b>Sanitary</b>
Upstream MH <b>A40-1</b>	Total Length <b>188.3</b>	Year Laid	Shape <b>Circular</b>	Location Details	
DS Manhole <b>A6-15</b>	Length surveyed <b>188.3</b>	Year Renewed	Height <b>8</b>	Width <b>8</b>	Pipe Joint... <b>4</b>
SPR <b>4</b>	MPR <b>2</b>	PO Number <b>4397-03</b>		Customer <b>GRW</b>	
SPRI <b>2</b>	MPRI <b>2</b>	Work Order <b>4397-02</b>		Purpose <b>Pre-Rehabilitation Survey</b>	
QSR <b>2200</b>	QMR <b>2100</b>				
OPR <b>6</b>	Surveyed By <b>Charlie Gordon</b>	Direction <b>Upstream</b>	Date <b>20150820</b>	Media label	
OPRI <b>2</b>	Certificate Number <b>U-615-07000491</b>	Pre-Cleaning <b>Jetting</b>	Time <b>09:53</b>	Weather <b>Light Rain</b>	
Date Cleaned <b>20150820</b>			End Time <b>10:14</b>	Additional Info	

			Structural Ratings			O & M Ratings			Combined Ratings		
			Grade Rating	No. Occur.	Rating	Grade Rating	No. Occur.	Rating	Grade Rating	No. Occur.	Rating
Normal Defects											
Continuous Defects			1	0	0	1	0	0	1	0	0
			2	2	4	2	1	2	2	3	6
			3	0	0	3	0	0	3	0	0
			4	0	0	4	0	0	4	0	0
			5	0	0	5	0	0	5	0	0
Code	ID	Length									