



## Defect Listing

Pipe Segment Refere... <b>A39-2_A39-1</b>	City <b>Oliver Springs</b>	Street <b>Butler mill Rd</b>	Material <b>Concrete Pipe (non-...</b>	Location C... <b>Light High...</b>	Sewer Use <b>Sanitary</b>
Upstream MH <b>A39-2</b>	Total Length <b>233.5</b>	Year Laid	Shape <b>Circular</b>	Location Details	
DS Manhole <b>A39-1</b>	Length surveyed <b>233.5</b>	Year Renewed	Height <b>8</b>	Width <b>8</b>	Pipe Joint... <b>4</b>

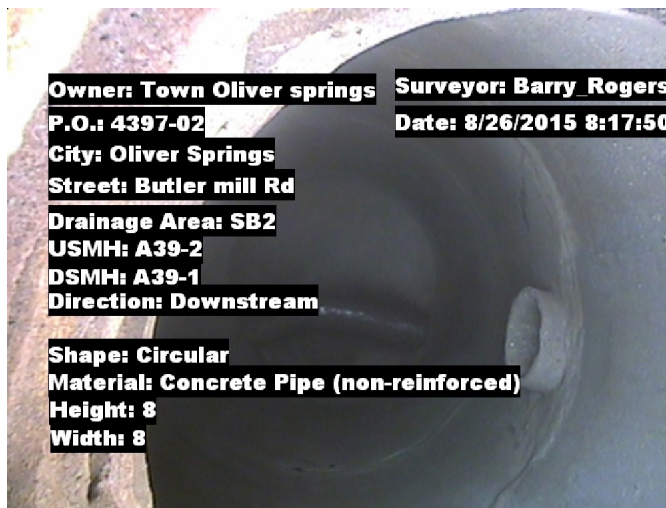
SPR <b>N/A</b>	MPR <b>1</b>	PO Number <b>4397-03</b>	Customer <b>GRW</b>
SPRI <b>N/A</b>	MPRI <b>1</b>	Work Order <b>4397-02</b>	Purpose <b>Pre-Rehabilitation Survey</b>
QSR <b>N/A</b>	QMR <b>1100</b>		
OPR <b>1</b>	Surveyed By <b>Charlie Gordon</b>	Direction <b>Downstream</b>	Date <b>20150826</b>
OPRI <b>1</b>	Certificate Number <b>U-615-07000491</b>	Pre-Cleaning <b>No Pre-Cleaning</b>	Time <b>08:19</b>
	Date Cleaned	End Time <b>08:32</b>	Weather <b>Damp</b>
			Additional Info <b>Unable to clean bec...</b>

Distance	Condition	Cont. Dfct.	Values			Joint	Clock Position		Grade
			1st	2nd	%		At/From	To	
0.0 ft.	Access Point Manhole				0	<input type="checkbox"/>			
Remarks: A39-2									
0.0 ft.	Water Level				5	<input type="checkbox"/>			
3.0 ft.	Tap Factory Made		6		0	<input type="checkbox"/>	12		
173.6 ft.	Roots Fine Joint				0	<input checked="" type="checkbox"/>	5		1
174.8 ft.	Tap Factory Made Capped		6		0	<input type="checkbox"/>	9		
231.8 ft.	Water Level				5	<input type="checkbox"/>			
233.5 ft.	Access Point Manhole				0	<input type="checkbox"/>			
Remarks: A39-1									



## Image Report 4/Page

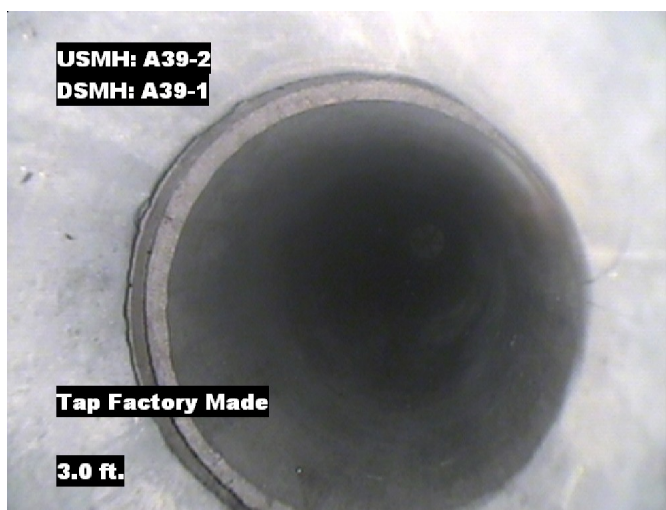
Pipe Segment Refere...	City	Street	Material	Location C...	Sewer Use
A39-2 A39-1	Oliver Springs	Butler mill Rd	Concrete Pipe (non-...	Light High...	Sanitary
Upstream MH A39-2	Total Length 233.5	Year Laid	Shape Circular	Location Details	
DS Manhole A39-1	Length surveyed 233.5	Year Renewed	Height 8	Width 8	Pipe Joint... 4



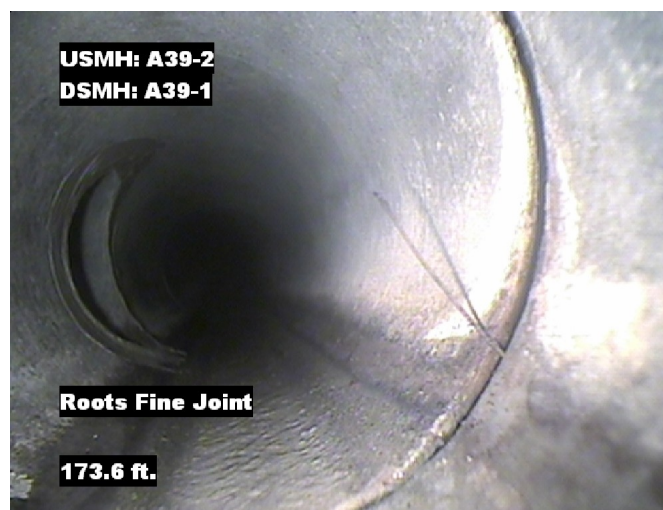
Distance: 0.0 ft. Grade: 0  
Condition: Access Point Manhole  
Remarks: A39-2



Distance: 0.0 ft. Grade: 0  
Condition: Water Level  
Remarks: N/A



Distance: 3.0 ft. Grade: 0  
Condition: Tap Factory Made  
Remarks: N/A

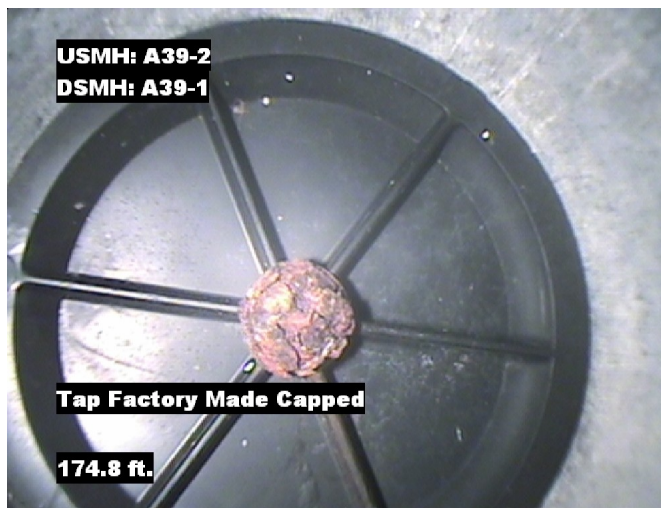


Distance: 173.6 ft. Grade: 1  
Condition: Roots Fine Joint  
Remarks: N/A



## Image Report 4/Page

Pipe Segment Refere...	City	Street	Material	Location C...	Sewer Use
A39-2_A39-1	Oliver Springs	Butler mill Rd	Concrete Pipe (non-...	Light High...	Sanitary
Upstream MH A39-2	Total Length 233.5	Year Laid	Shape Circular	Location Details	
DS Manhole A39-1	Length surveyed 233.5	Year Renewed	Height 8	Width 8	Pipe Joint... 4



Distance: 174.8 ft. Grade: 0  
Condition: Tap Factory Made Capped  
Remarks: N/A



Distance: 231.8 ft. Grade: 0  
Condition: Water Level  
Remarks: N/A



Distance: 233.5 ft. Grade: 0  
Condition: Access Point Manhole  
Remarks: A39-1



## PACP Conditions

Pipe Segment Refere... <b>A39-2_A39-1</b>	City <b>Oliver Springs</b>	Street <b>Butler mill Rd</b>	Material <b>Concrete Pipe (non-...</b>	Location C... <b>Light High...</b>	Sewer Use <b>Sanitary</b>
Upstream MH <b>A39-2</b>	Total Length <b>233.5</b>	Year Laid	Shape <b>Circular</b>	Location Details	
DS Manhole <b>A39-1</b>	Length surveyed <b>233.5</b>	Year Renewed	Height <b>8</b>	Width <b>8</b>	Pipe Joint... <b>4</b>
SPR <b>N/A</b>	MPR <b>1</b>	PO Number <b>4397-03</b>		Customer <b>GRW</b>	
SPRI <b>N/A</b>	MPRI <b>1</b>	Work Order <b>4397-02</b>		Purpose <b>Pre-Rehabilitation Survey</b>	
QSR <b>N/A</b>	QMR <b>1100</b>				
OPR <b>1</b>	Surveyed By <b>Charlie Gordon</b>	Direction <b>Downstream</b>	Date <b>20150826</b>	Media label	
OPRI <b>1</b>	Certificate Number <b>U-615-07000491</b>	Pre-Cleaning <b>No Pre-Cleaning</b>	Time <b>08:19</b>	Weather <b>Damp</b>	
Date Cleaned			End Time <b>08:32</b>	Additional Info <b>Unable to clean bec...</b>	

			Structural Ratings			O & M Ratings			Combined Ratings		
			Grade Rating	No. Occur.	Rating	Grade Rating	No. Occur.	Rating	Grade Rating	No. Occur.	Rating
Normal Defects											
			1	0	0	1	1	1	1	1	1
			2	0	0	2	0	0	2	0	0
			3	0	0	3	0	0	3	0	0
			4	0	0	4	0	0	4	0	0
			5	0	0	5	0	0	5	0	0
Continuous Defects											
Code	ID	Length									
			Subtotals	0		Subtotals	1		Subtotals	1	
SUMMARY			Pipe Rating		0	Pipe Rating		1	Overall Pipe Rating		1
			Structural Index		0	O&M Index		1.0	Overall Index		1.0
			Str. Quick Rating		0000	O&M Quick Rating		1100	Ovrl. Quick Rating		1100