



Defect Listing

| | | | | | |
|--|---------------------------------|-----------------------------|---|---------------------------------------|------------------------------|
| Pipe Segment Refere... A38-1_A37-1 | City Oliver Springs | Street Hen Valley | Material Concrete Pipe (non-... | Location C... Light High... | Sewer Use Sanitary |
| Upstream MH A38-1 | Total Length 128.9 | Year Laid | Shape Circular | Location Details | |
| DS Manhole A37-1 | Length surveyed 128.9 | Year Renewed | Height 8 | Width 8 | Pipe Joint... 4 |

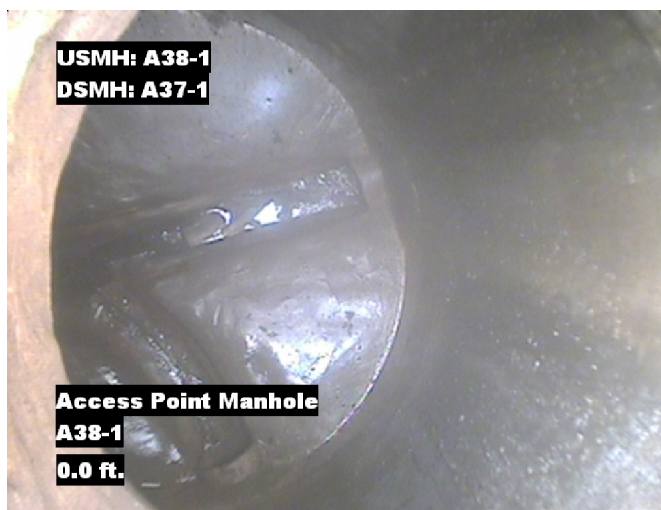
| | | | | | |
|---------------------------------|---|--------------------------------|--------------------------|---|--|
| SPR N/A | MPR N/A | PO Number 4397-03 | | Customer GRW | |
| SPRI N/A | MPRI N/A | Work Order 4397-02 | | Purpose Pre-Rehabilitation Survey | |
| QSR N/A | QMR N/A | | | | |
| OPR N/A | Surveyed By Barry Rogers | Direction Downstream | Date 20150810 | Media label | |
| OPRI N/A | Certificate Number U-1012-16405 | Pre-Cleaning Jetting | Time 07:07 | Weather Dry | |
| Date Cleaned 20150810 | | | End Time 07:13 | Additional Info | |

| Distance | Condition | Cont. Dfct. | Values | | | Joint | Clock Position | | Grade |
|----------------|----------------------|-------------|--------|-----|---|--------------------------|----------------|----|-------|
| | | | 1st | 2nd | % | | At/From | To | |
| 0.0 ft. | Access Point Manhole | | | | 0 | <input type="checkbox"/> | | | |
| Remarks: A38-1 | | | | | | | | | |
| 0.0 ft. | Water Level | | | | 5 | <input type="checkbox"/> | | | |
| 126.5 ft. | Water Level | | | | 5 | <input type="checkbox"/> | | | |
| 128.9 ft. | Access Point Manhole | | | | 0 | <input type="checkbox"/> | | | |
| Remarks: A37-1 | | | | | | | | | |

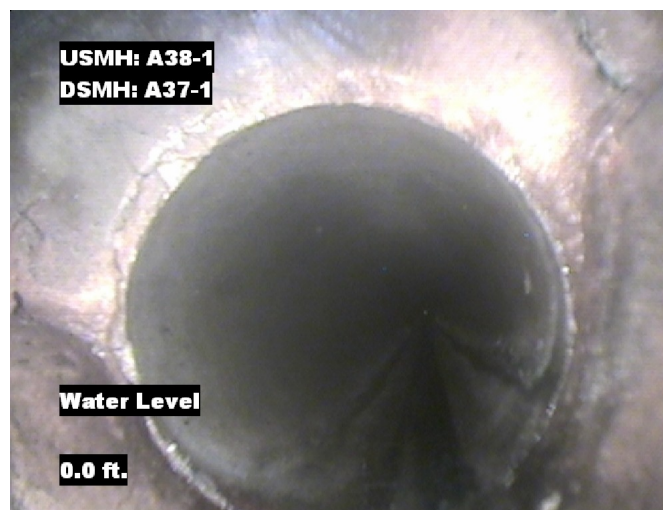


Image Report 4/Page

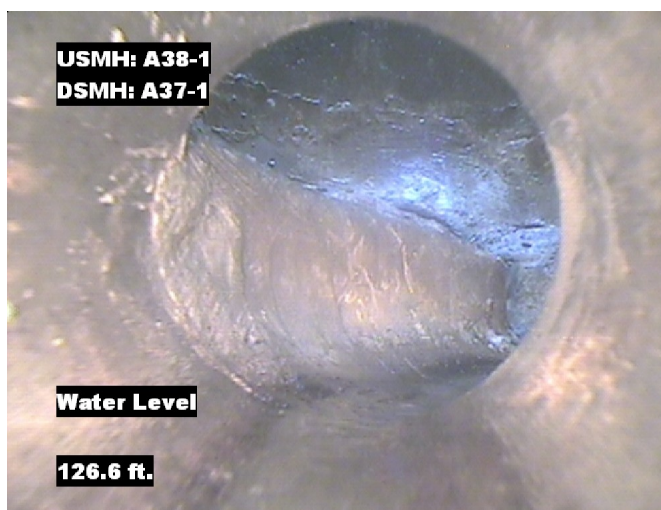
| Pipe Segment Refere... | City | Street | Material | Location C... | Sewer Use |
|------------------------|-----------------|--------------|------------------------|------------------|---------------|
| A38-1_A37-1 | Oliver Springs | Hen Valley | Concrete Pipe (non-... | Light High... | Sanitary |
| Upstream MH | Total Length | Year Laid | Shape | Location Details | |
| A38-1 | 128.9 | | Circular | | |
| DS Manhole | Length surveyed | Year Renewed | Height | Width | Pipe Joint... |
| A37-1 | 128.9 | | 8 | 8 | 4 |



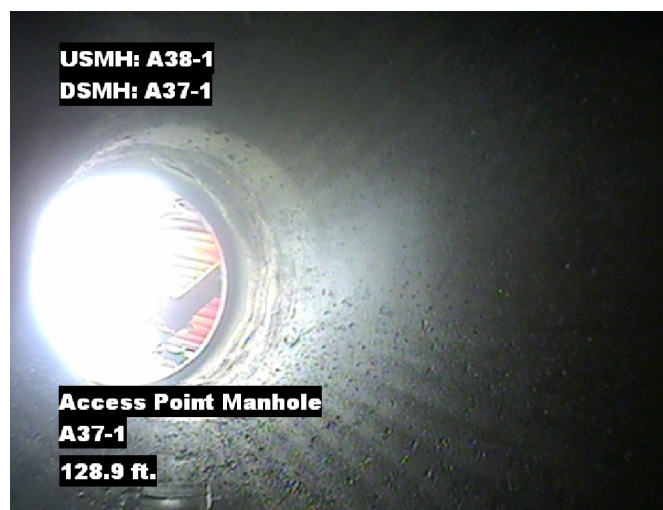
Distance: 0.0 ft. Grade: 0
Condition: Access Point Manhole
Remarks: A38-1



Distance: 0.0 ft. Grade: 0
Condition: Water Level
Remarks: N/A



Distance: 126.5 ft. Grade: 0
Condition: Water Level
Remarks: N/A



Distance: 128.9 ft. Grade: 0
Condition: Access Point Manhole
Remarks: A37-1



| | | | | | |
|------------------------|--------------------|--------------|------------------------|------------------|---------------|
| Pipe Segment Refere... | City | Street | Material | Location C... | Sewer Use |
| A38-1_A37-1 | Oliver Springs | Hen Valley | Concrete Pipe (non-... | Light High... | Sanitary |
| Upstream MH | Total Length | Year Laid | Shape | Location Details | |
| A38-1 | 128.9 | | Circular | | |
| DS Manhole | Length surveyed | Year Renewed | Height | Width | Pipe Joint... |
| A37-1 | 128.9 | | 8 | 8 | 4 |
| SPR | N/A | MPR | N/A | Customer | |
| SPRI | N/A | MPRI | N/A | GRW | |
| QSR | N/A | QMR | N/A | Purpose | |
| OPR | Surveyed By | Direction | Date | Media label | |
| N/A | Barry_Rogers | Downstream | 20150810 | | |
| OPRI | Certificate Number | Pre-Cleaning | Time | Weather | |
| N/A | U-1012-16405 | Jetting | 07:07 | Dry | |
| Date Cleaned | | | End Time | Additional Info | |
| 20150810 | | | 07:13 | | |

[illegible]