



Defect Listing

Pipe Segment Refere... A33-1_A-63	City Oliver Springs	Street Green St	Material Concrete Pipe (non-...	Location C... Light High...	Sewer Use Sanitary
Upstream MH A33-1	Total Length 177.3	Year Laid	Shape Circular	Location Details	
DS Manhole A-63	Length surveyed 177.3	Year Renewed	Height 8	Width 8	Pipe Joint... 4

SPR 1	MPR N/A	PO Number 4397-03	Customer GRW
SPRI 1	MPRI N/A	Work Order 4397-02	Purpose Pre-Rehabilitation Survey
QSR 1100	QMR N/A		
OPR 1	Surveyed By Barry Rogers	Direction Downstream	Date 20150727
OPRI 1	Certificate Number U-1012-16405	Pre-Cleaning Jetting	Time 10:18
	Date Cleaned 20150727	End Time 10:26	Weather Dry
			Media label
			Additional Info

Distance	Condition	Cont. Dfct.	Values			Joint	Clock Position		Grade
			1st	2nd	%		At/From	To	
0.0 ft.	Access Point Manhole				0	<input type="checkbox"/>			
Remarks: A33-1									
0.0 ft.	Water Level				5	<input type="checkbox"/>			
5.0 ft.	Material Change				0	<input type="checkbox"/>			
Remarks: CP to PVC									
10.4 ft.	Joint Offset Medium				0	<input type="checkbox"/>			1
11.3 ft.	Material Change				0	<input type="checkbox"/>			
Remarks: PVC to CP									
120.9 ft.	Tap Factory Made		6		0	<input type="checkbox"/>	2		
176.1 ft.	Water Level				5	<input type="checkbox"/>			
177.3 ft.	Access Point Manhole				0	<input type="checkbox"/>			
Remarks: A-63									

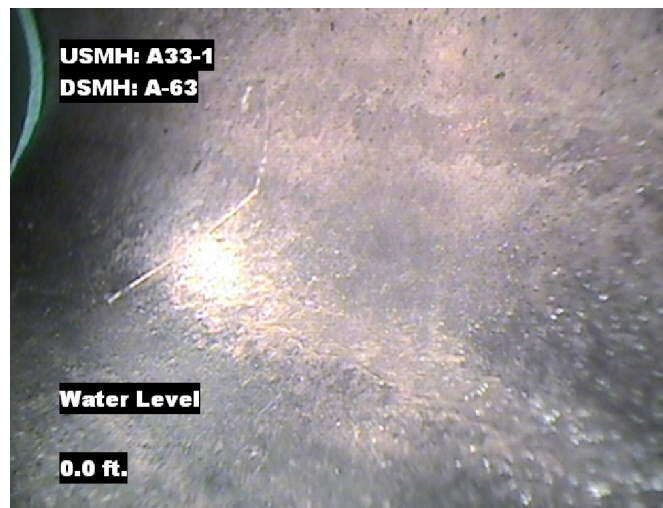


Image Report 4/Page

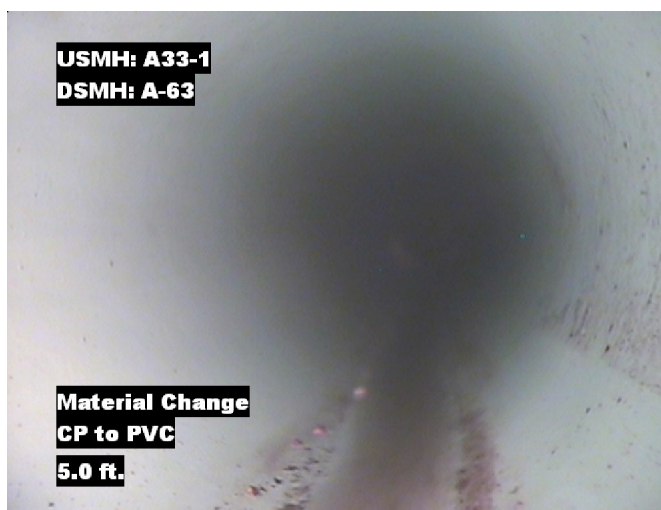
Pipe Segment Refere...	City	Street	Material	Location C...	Sewer Use
A33-1_A-63	Oliver Springs	Green St	Concrete Pipe (non-...	Light High...	Sanitary
Upstream MH	Total Length	Year Laid	Shape	Location Details	
A33-1	177.3		Circular		
DS Manhole	Length surveyed	Year Renewed	Height	Width	Pipe Joint...
A-63	177.3		8	8	4



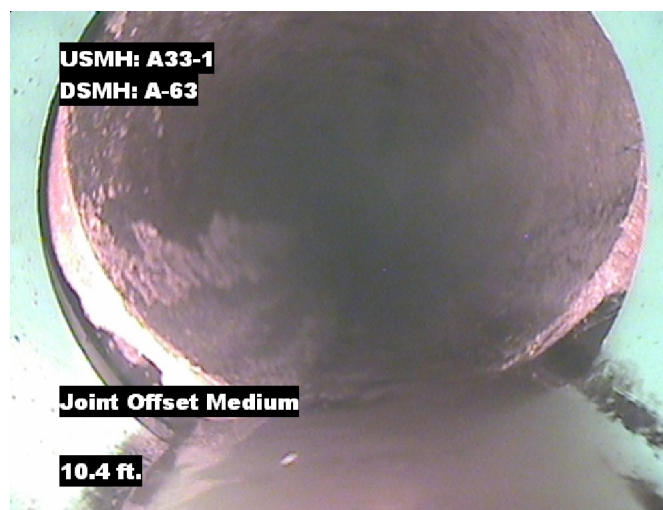
Distance: 0.0 ft. Grade: 0
Condition: Access Point Manhole
Remarks: A33-1



Distance: 0.0 ft. Grade: 0
Condition: Water Level
Remarks: N/A



Distance: 5.0 ft. Grade: 0
Condition: Material Change
Remarks: CP to PVC

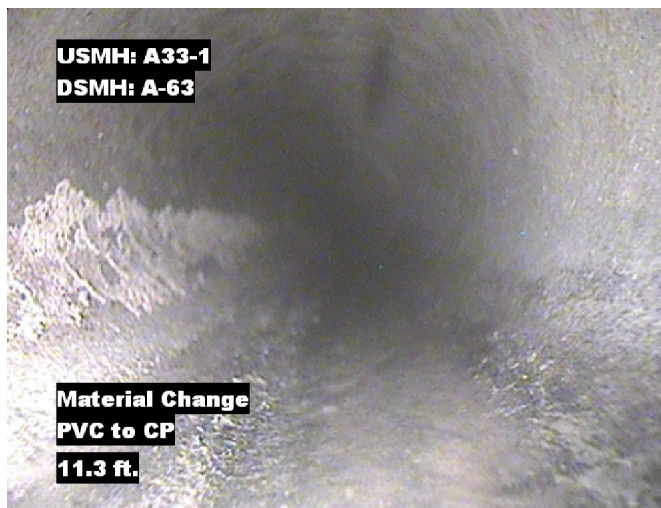


Distance: 10.4 ft. Grade: 1
Condition: Joint Offset Medium
Remarks: N/A

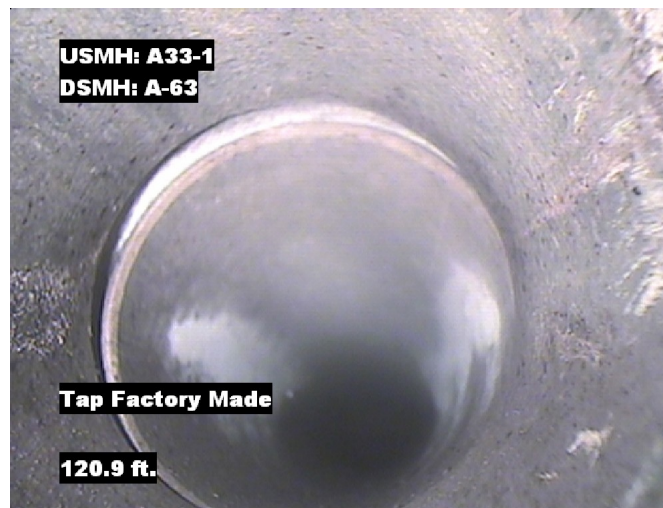


Image Report 4/Page

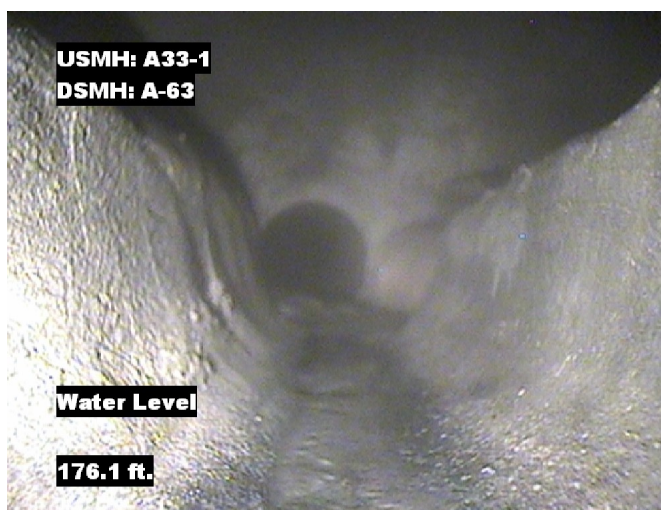
Pipe Segment Refere... A33-1_A-63	City Oliver Springs	Street Green St	Material Concrete Pipe (non-...		Location C... Light High...	Sewer Use Sanitary
Upstream MH A33-1	Total Length 177.3	Year Laid	Shape Circular		Location Details	
DS Manhole A-63	Length surveyed 177.3	Year Renewed	Height 8	Width 8	Pipe Joint... 4	



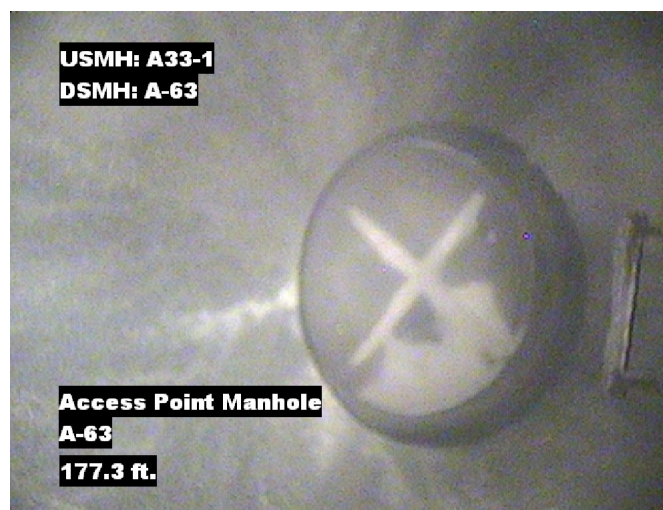
Distance: 11.3 ft. Grade: 0
Condition: Material Change
Remarks: PVC to CP



Distance: 120.9 ft. Grade: 0
Condition: Tap Factory Made
Remarks: N/A



Distance: 176.1 ft. Grade: 0
Condition: Water Level
Remarks: N/A



Distance: 177.3 ft. Grade: 0
Condition: Access Point Manhole
Remarks: A-63



PACP Conditions

Pipe Segment Refere... A33-1_A-63	City Oliver Springs	Street Green St	Material Concrete Pipe (non-...	Location C... Light High...	Sewer Use Sanitary
Upstream MH A33-1	Total Length 177.3	Year Laid	Shape Circular	Location Details	
DS Manhole A-63	Length surveyed 177.3	Year Renewed	Height 8	Width 8	Pipe Joint... 4
SPR 1	MPR N/A	PO Number 4397-03		Customer GRW	
SPRI 1	MPRI N/A	Work Order 4397-02		Purpose Pre-Rehabilitation Survey	
QSR 1100	QMR N/A	Direction Downstream		Date 20150727	
OPR 1	Surveyed By Barry Rogers	Pre-Cleaning Jetting		Media label	
OPRI 1	Certificate Number U-1012-16405	Time 10:18		Weather Dry	
Date Cleaned 20150727			End Time 10:26		Additional Info

			Structural Ratings			O & M Ratings			Combined Ratings		
			Grade Rating	No. Occur.	Rating	Grade Rating	No. Occur.	Rating	Grade Rating	No. Occur.	Rating
Normal Defects											
			1	1	1	1	0	0	1	1	1
			2	0	0	2	0	0	2	0	0
			3	0	0	3	0	0	3	0	0
			4	0	0	4	0	0	4	0	0
			5	0	0	5	0	0	5	0	0
Continuous Defects											
Code	ID	Length									
			Subtotals	1		Subtotals	0		Subtotals	1	
SUMMARY			Pipe Rating	1		Pipe Rating	0		Overall Pipe Rating	1	
			Structural Index	1.0		O&M Index	0		Overall Index	1.0	
			Str. Quick Rating	1100		O&M Quick Rating	0000		Ovrl. Quick Rating	1100	