



## Defect Listing

Pipe Segment Refere... <b>A30-2_A30-1</b>	City <b>Oliver Springs</b>	Street <b>Ann St.</b>	Material <b>Concrete Pipe (non-...</b>	Location C... <b>Yard</b>	Sewer Use <b>Sanitary</b>
Upstream MH <b>A30-2</b>	Total Length <b>283.7</b>	Year Laid	Shape <b>Circular</b>	Location Details	
DS Manhole <b>A30-1</b>	Length surveyed <b>283.7</b>	Year Renewed	Height <b>8</b>	Width <b>8</b>	Pipe Joint... <b>4</b>

SPR <b>N/A</b>	MPR <b>5</b>	PO Number <b>4397-03</b>	Customer <b>GRW</b>
SPRI <b>N/A</b>	MPRI <b>5</b>	Work Order <b>4397-02</b>	Purpose <b>Pre-Rehabilitation Survey</b>
QSR <b>N/A</b>	QMR <b>5100</b>		
OPR <b>5</b>	Surveyed By <b>Barry Rogers</b>	Direction <b>Downstream</b>	Date <b>20150731</b>
OPRI <b>5</b>	Certificate Number <b>U-1012-16405</b>	Pre-Cleaning <b>Jetting</b>	Time <b>14:36</b>
	Date Cleaned <b>20150731</b>	End Time <b>14:50</b>	Weather <b>Dry</b>
			Media label
			Additional Info

Distance	Condition	Cont. Dfct.	Values			Joint	Clock Position		Grade
			1st	2nd	%		At/From	To	
0.0 ft.	Access Point Manhole				0	<input type="checkbox"/>			
Remarks: A30-2									
0.0 ft.	Water Level				5	<input type="checkbox"/>			
56.4 ft.	Tap Factory Made		6		0	<input type="checkbox"/>	3		
282.2 ft.	Infiltration Gusher				0	<input type="checkbox"/>	10		5
282.2 ft.	Water Level				5	<input type="checkbox"/>			
283.7 ft.	Access Point Manhole				0	<input type="checkbox"/>			
Remarks: a30-1									

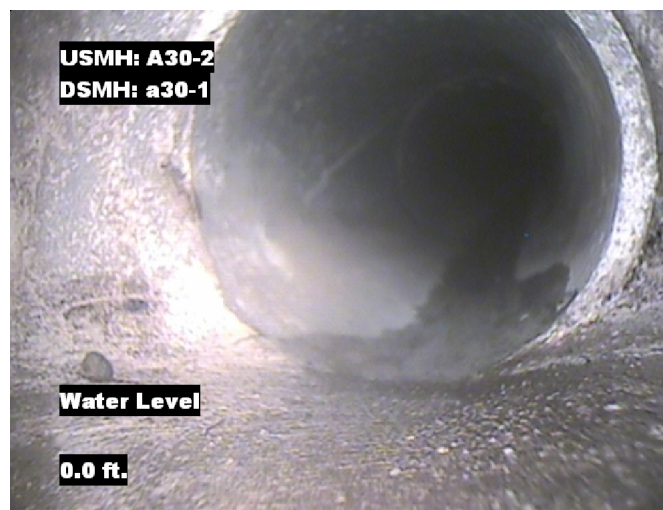


## Image Report 4/Page

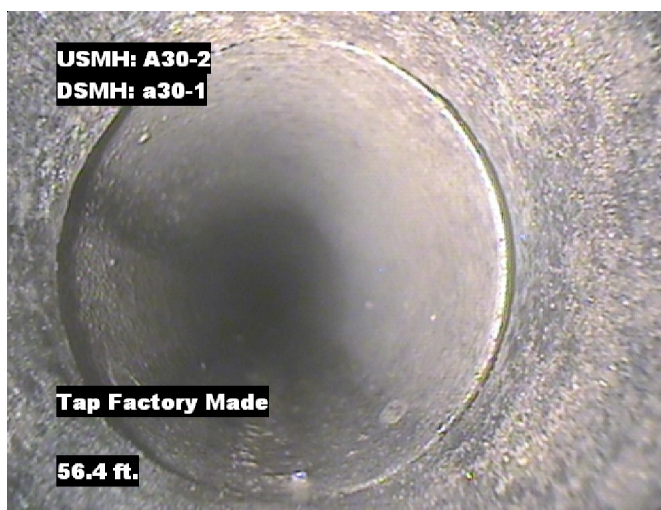
Pipe Segment Refere...	City	Street	Material	Location C...	Sewer Use
A30-2_A30-1	Oliver Springs	Ann St.	Concrete Pipe (non-...	Yard	Sanitary
Upstream MH A30-2	Total Length 283.7	Year Laid	Shape Circular	Location Details	
DS Manhole A30-1	Length surveyed 283.7	Year Renewed	Height 8	Width 8	Pipe Joint... 4



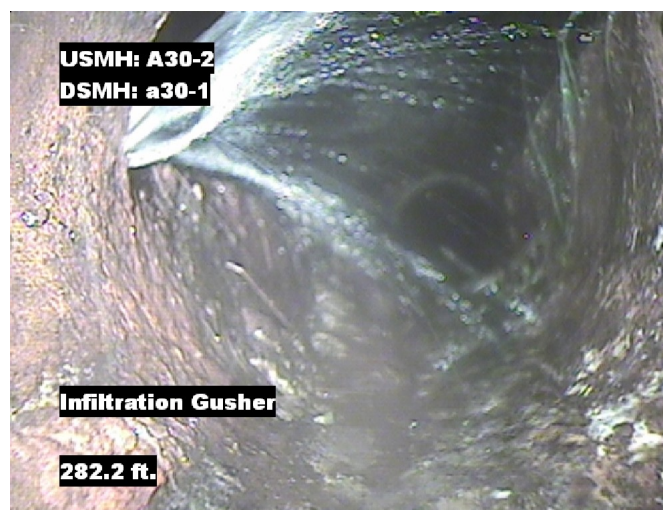
Distance: 0.0 ft. Grade: 0  
Condition: Access Point Manhole  
Remarks: A30-2



Distance: 0.0 ft. Grade: 0  
Condition: Water Level  
Remarks: N/A



Distance: 56.4 ft. Grade: 0  
Condition: Tap Factory Made  
Remarks: N/A

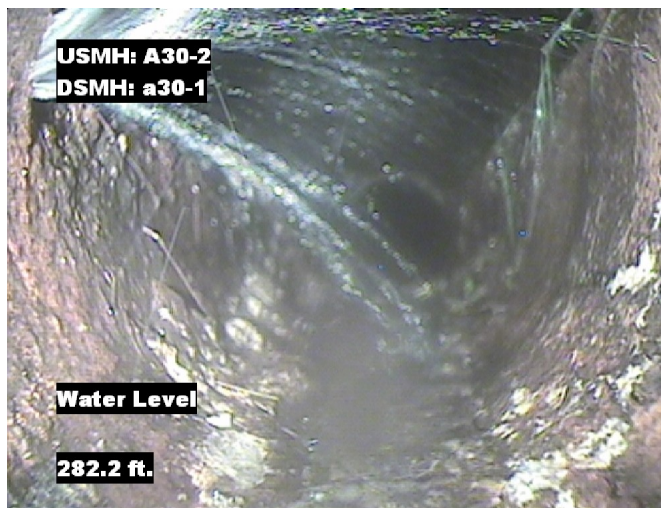


Distance: 282.2 ft. Grade: 5  
Condition: Infiltration Gusher  
Remarks: N/A



## Image Report 4/Page

Pipe Segment Refere... <b>A30-2_A30-1</b>	<b>City</b> <b>Oliver Springs</b>	<b>Street</b> <b>Ann St.</b>	<b>Material</b> <b>Concrete Pipe (non-...</b>		<b>Location C...</b> <b>Yard</b>	<b>Sewer Use</b> <b>Sanitary</b>
<b>Upstream MH</b> <b>A30-2</b>	Total Length <b>283.7</b>	Year Laid	<b>Shape</b> <b>Circular</b>		Location Details	
<b>DS Manhole</b> <b>A30-1</b>	<b>Length surveyed</b> <b>283.7</b>	Year Renewed	<b>Height</b> <b>8</b>	Width <b>8</b>	Pipe Joint...	<b>4</b>



Distance: 282.2 ft.      Grade: 0  
Condition: Water Level  
Remarks: N/A



Distance: 283.7 ft.      Grade: 0  
Condition: Access Point Manhole  
Remarks: a30-1



Pipe Segment Refere... A30-2_A30-1	City Oliver Springs	Street Ann St.	Material Concrete Pipe (non-...		Location C... Yard	Sewer Use Sanitary
Upstream MH A30-2	Total Length 283.7	Year Laid	Shape Circular		Location Details	
DS Manhole A30-1	Length surveyed 283.7	Year Renewed	Height 8	Width 8	Pipe Joint... 4	
SPR N/A	MPR 5	PO Number 4397-03		Customer GRW		
SPRI N/A	MPRI 5	Work Order 4397-02		Purpose		
QSR N/A	QMR 5100			Pre-Rehabilitation Survey		
OPR 5	Surveyed By Barry_Rogers	Direction Downstream	Date 20150731		Media label	
OPRI 5	Certificate Number U-1012-16405	Pre-Cleaning Jetting	Time 14:36		Weather Dry	
Date Cleaned 20150731			End Time 14:50		Additional Info	

[illegible]