



Defect Listing

Pipe Segment Refere... A28-2_A28-1	City Oliver Springs	Street Highland Dr	Material Concrete Pipe (non-...	Location C... Light High...	Sewer Use Sanitary
Upstream MH A28-2	Total Length 112.8	Year Laid	Shape Circular	Location Details	
DS Manhole A28-1	Length surveyed 112.8	Year Renewed	Height 8	Width 8	Pipe Joint... 4

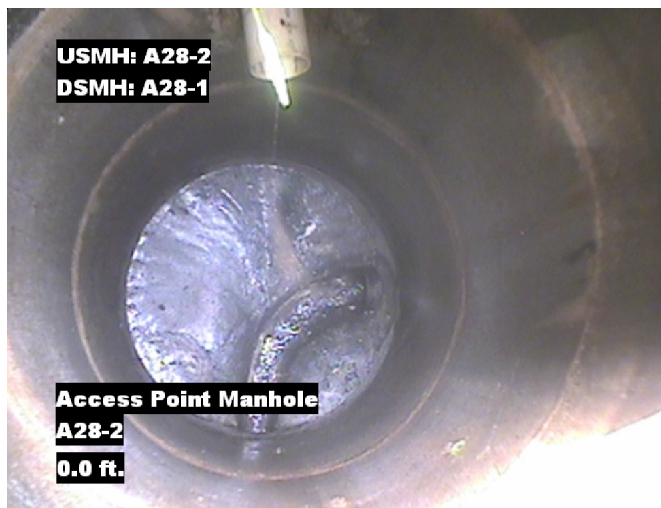
SPR 1	MPR N/A	PO Number 4397-03	Customer GRW
SPRI 1	MPRI N/A	Work Order 4397-02	Purpose Pre-Rehabilitation Survey
QSR 1100	QMR N/A		
OPR 1	Surveyed By Charlie Gordon	Direction Downstream	Date 20150820
OPRI 1	Certificate Number U-615-07000491	Pre-Cleaning Jetting	Time 14:27
	Date Cleaned 20150820	End Time 14:37	Weather Damp
			Media label
			Additional Info

Distance	Condition	Cont. Dfct.	Values			Joint	Clock Position		Grade
			1st	2nd	%		At/From	To	
0.0 ft.	Access Point Manhole				0	<input type="checkbox"/>			
Remarks: A28-2									
0.0 ft.	Water Level				5	<input type="checkbox"/>			
104.2 ft.	Material Change				0	<input type="checkbox"/>			
Remarks: cp to pvc									
107.7 ft.	Joint Offset Medium				0	<input type="checkbox"/>			1
107.7 ft.	Material Change				0	<input type="checkbox"/>			
Remarks: pvc to cp									
111.8 ft.	Tap Factory Made Active		6		0	<input type="checkbox"/>	6		
112.8 ft.	Water Level				5	<input type="checkbox"/>			
112.8 ft.	Access Point Manhole				0	<input type="checkbox"/>			
Remarks: A28-1									

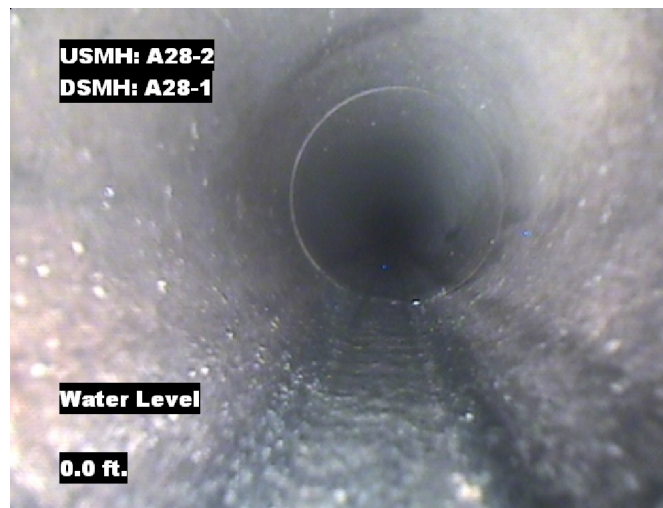


Image Report 4/Page

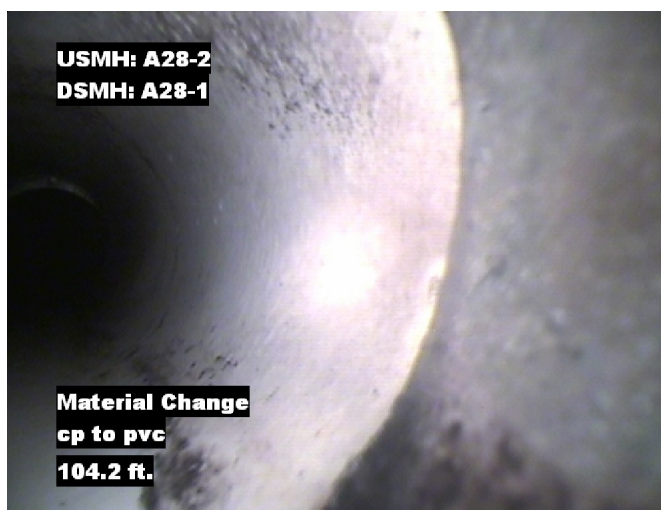
Pipe Segment Refere... A28-2_A28-1	City Oliver Springs	Street Highland Dr	Material Concrete Pipe (non-...		Location C... Light High...	Sewer Use Sanitary
Upstream MH A28-2	Total Length 112.8	Year Laid	Shape Circular		Location Details	
DS Manhole A28-1	Length surveyed 112.8	Year Renewed	Height 8	Width 8	Pipe Joint... 4	



Distance: 0.0 ft. Grade: 0
Condition: Access Point Manhole
Remarks: A28-2



Distance: 0.0 ft. Grade: 0
Condition: Water Level
Remarks: N/A



Distance: 104.2 ft. Grade: 0
Condition: Material Change
Remarks: cp to pvc

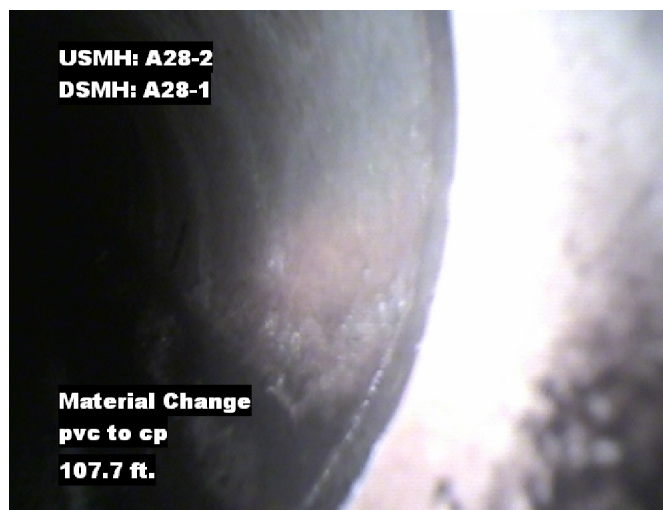


Distance: 107.7 ft. Grade: 1
Condition: Joint Offset Medium
Remarks: N/A



Image Report 4/Page

Pipe Segment Refere...	City	Street	Material	Location C...	Sewer Use
A28-2_A28-1	Oliver Springs	Highland Dr	Concrete Pipe (non-...	Light High...	Sanitary
Upstream MH A28-2	Total Length 112.8	Year Laid	Shape Circular	Location Details	
DS Manhole A28-1	Length surveyed 112.8	Year Renewed	Height 8	Width 8	Pipe Joint... 4



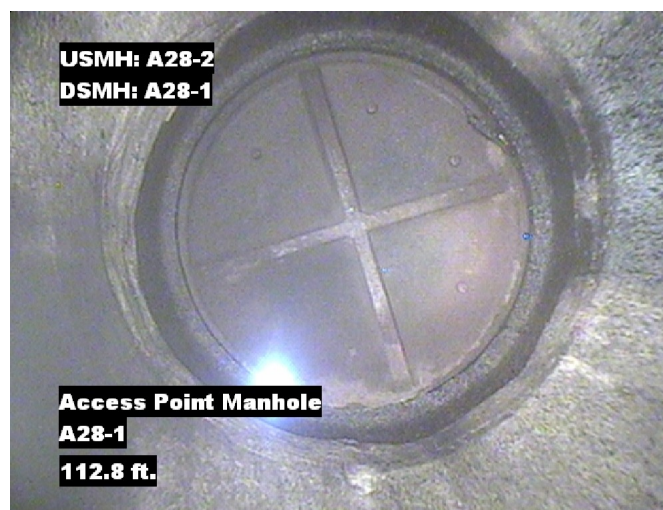
Distance: 107.7 ft. Grade: 0
Condition: Material Change
Remarks: pvc to cp



Distance: 111.8 ft. Grade: 0
Condition: Tap Factory Made Active
Remarks: N/A



Distance: 112.8 ft. Grade: 0
Condition: Water Level
Remarks: N/A



Distance: 112.8 ft. Grade: 0
Condition: Access Point Manhole
Remarks: A28-1



PACP Conditions

Pipe Segment Refere... A28-2_A28-1	City Oliver Springs	Street Highland Dr	Material Concrete Pipe (non-...	Location C... Light High...	Sewer Use Sanitary
Upstream MH A28-2	Total Length 112.8	Year Laid	Shape Circular	Location Details	
DS Manhole A28-1	Length surveyed 112.8	Year Renewed	Height 8	Width 8	Pipe Joint... 4
SPR 1	MPR N/A	PO Number 4397-03		Customer GRW	
SPRI 1	MPRI N/A	Work Order 4397-02		Purpose Pre-Rehabilitation Survey	
QSR 1100	QMR N/A	Direction Downstream		Date 20150820	
OPR 1	Surveyed By Charlie Gordon	Pre-Cleaning Jetting		Media label	
OPRI 1	Certificate Number U-615-07000491	Time 14:27		Weather Damp	
Date Cleaned 20150820			End Time 14:37		Additional Info

			Structural Ratings			O & M Ratings			Combined Ratings		
			Grade Rating	No. Occur.	Rating	Grade Rating	No. Occur.	Rating	Grade Rating	No. Occur.	Rating
Normal Defects											
Continuous Defects			1	1	1	1	0	0	1	1	1
			2	0	0	2	0	0	2	0	0
			3	0	0	3	0	0	3	0	0
			4	0	0	4	0	0	4	0	0
			5	0	0	5	0	0	5	0	0
Code	ID	Length									