



Defect Listing

Pipe Segment Refere... A27-6_A27-5	City Oliver Springs	Street Springs St	Material Concrete Pipe (non-...	Location C... Light High...	Sewer Use Sanitary
Upstream MH A27-6	Total Length 308.3	Year Laid	Shape Circular	Location Details	
DS Manhole A27-5	Length surveyed 308.3	Year Renewed	Height 8	Width 8	Pipe Joint... 4

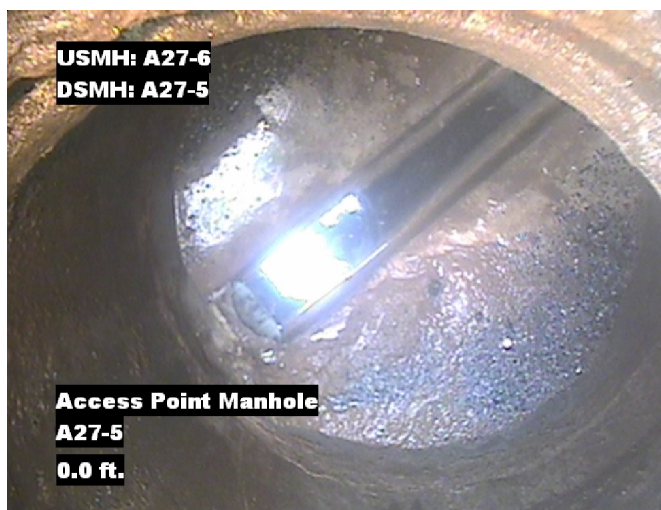
SPR 3	MPR 14	PO Number 4397-03	Customer GRW
SPRI 1.5	MPRI 2.3	Work Order 4397-02	Purpose Pre-Rehabilitation Survey
QSR 2111	QMR 4125		
OPR 17	Surveyed By Charlie Gordon	Direction Upstream	Date 20150821
OPRI 2.1	Certificate Number U-615-07000491	Pre-Cleaning Heavy Cleaning	Time 10:19
	Date Cleaned 20150821	End Time 10:42	Weather Damp
			Media label
			Additional Info

Distance	Condition	Cont. Dfct.	Values			Joint	Clock Position		Grade
			1st	2nd	%		At/From	To	
0.0 ft.	Access Point Manhole				0	<input type="checkbox"/>			
Remarks: A27-5									
0.0 ft.	Water Level				5	<input type="checkbox"/>			
122.4 ft.	Water Level Sag				10	<input type="checkbox"/>			2
227.0 ft.	Water Level Sag				10	<input type="checkbox"/>			2
237.3 ft.	Water Level Sag	S01			10	<input type="checkbox"/>			2
248.5 ft.	Water Level Sag	F01			10	<input type="checkbox"/>			2
262.6 ft.	Tap Factory Made		6		0	<input type="checkbox"/>	3		
266.5 ft.	Joint Offset Large				0	<input type="checkbox"/>			2
266.5 ft.	Material Change				0	<input type="checkbox"/>			
Remarks: CP TO PVC									
267.7 ft.	Camera Underwater					<input type="checkbox"/>			4
268.6 ft.	Water Level Sag				15	<input type="checkbox"/>			2
269.4 ft.	Material Change				0	<input type="checkbox"/>			
Remarks: PVC TO CP									
272.1 ft.	Joint Offset Medium				0	<input type="checkbox"/>			1
306.8 ft.	Water Level				5	<input type="checkbox"/>			
308.3 ft.	Access Point Manhole				0	<input type="checkbox"/>			
Remarks: A27-6									

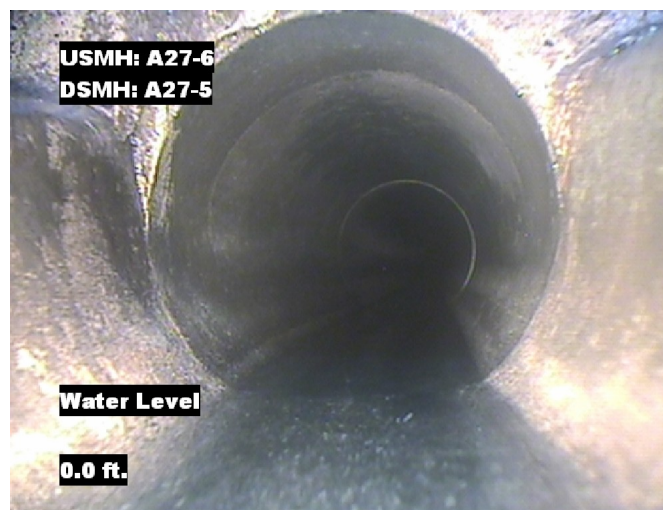


Image Report 4/Page

Pipe Segment Refere... A27-6_A27-5	City Oliver Springs	Street Springs St	Material Concrete Pipe (non-...		Location C... Light High...	Sewer Use Sanitary
Upstream MH A27-6	Total Length 308.3	Year Laid	Shape Circular		Location Details	
DS Manhole A27-5	Length surveyed 308.3	Year Renewed	Height 8	Width 8	Pipe Joint... 4	



Distance: 0.0 ft. Grade: 0
Condition: Access Point Manhole
Remarks: A27-5



Distance: 0.0 ft. Grade: 0
Condition: Water Level
Remarks: N/A



Distance: 122.4 ft. Grade: 2
Condition: Water Level Sag
Remarks: N/A

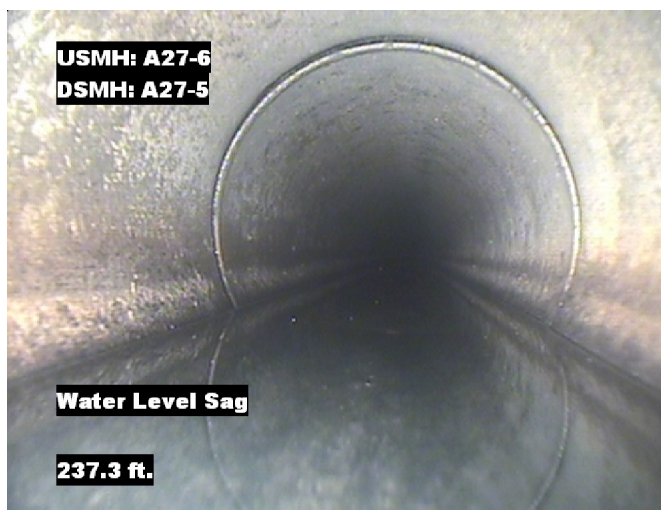


Distance: 227.0 ft. Grade: 2
Condition: Water Level Sag
Remarks: N/A



Image Report 4/Page

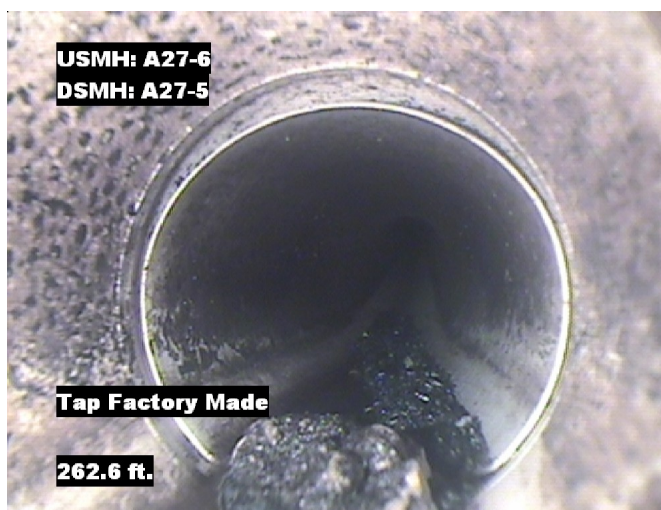
Pipe Segment Refere...	City	Street	Material	Location C...	Sewer Use
A27-6_A27-5	Oliver Springs	Springs St	Concrete Pipe (non-...	Light High...	Sanitary
Upstream MH A27-6	Total Length 308.3	Year Laid	Shape Circular	Location Details	
DS Manhole A27-5	Length surveyed 308.3	Year Renewed	Height 8	Width 8	Pipe Joint... 4



Distance: 237.3 ft. Grade: 2
Condition: Water Level Sag
Remarks: N/A



Distance: 248.5 ft. Grade: 2
Condition: Water Level Sag
Remarks: N/A



Distance: 262.6 ft. Grade: 0
Condition: Tap Factory Made
Remarks: N/A

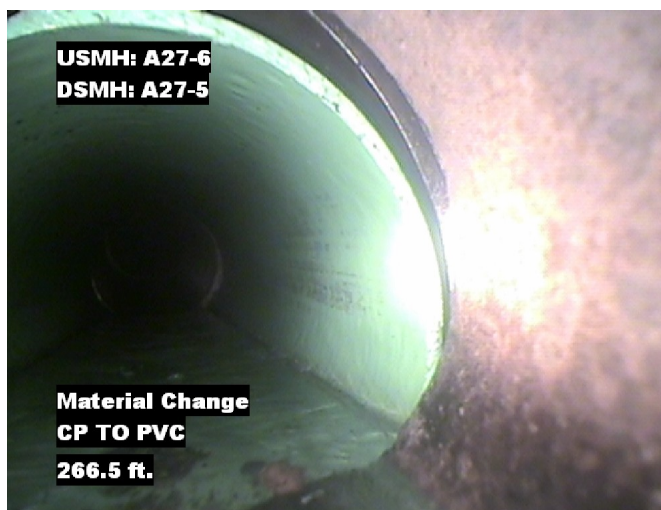


Distance: 266.5 ft. Grade: 2
Condition: Joint Offset Large
Remarks: N/A



Image Report 4/Page

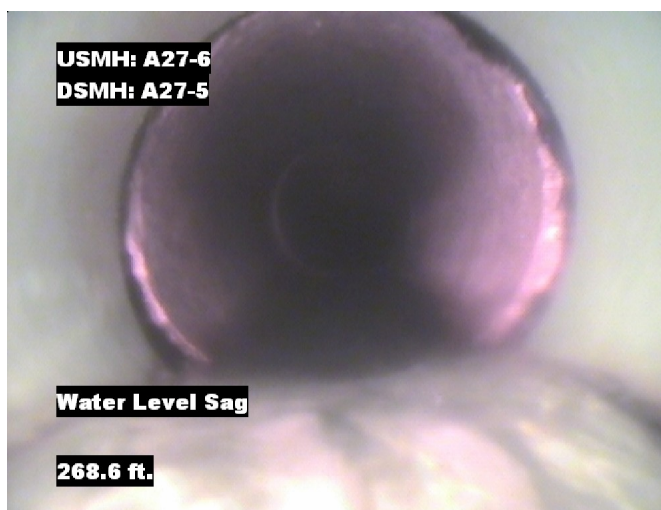
Pipe Segment Refere...	City	Street	Material	Location C...	Sewer Use
A27-6_A27-5	Oliver Springs	Springs St	Concrete Pipe (non-...	Light High...	Sanitary
Upstream MH	Total Length	Year Laid	Shape	Location Details	
A27-6	308.3		Circular		
DS Manhole	Length surveyed	Year Renewed	Height	Width	Pipe Joint...
A27-5	308.3		8	8	4



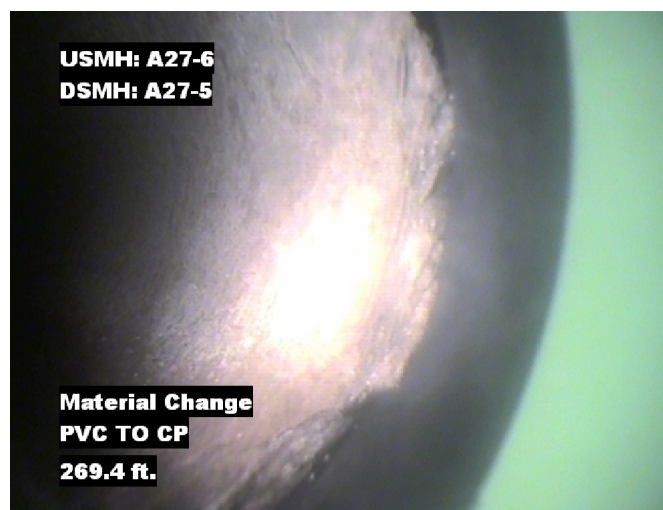
Distance: 266.5 ft. Grade: 0
Condition: Material Change
Remarks: CP TO PVC



Distance: 267.7 ft. Grade: 4
Condition: Camera Underwater
Remarks: N/A



Distance: 268.6 ft. Grade: 2
Condition: Water Level Sag
Remarks: N/A

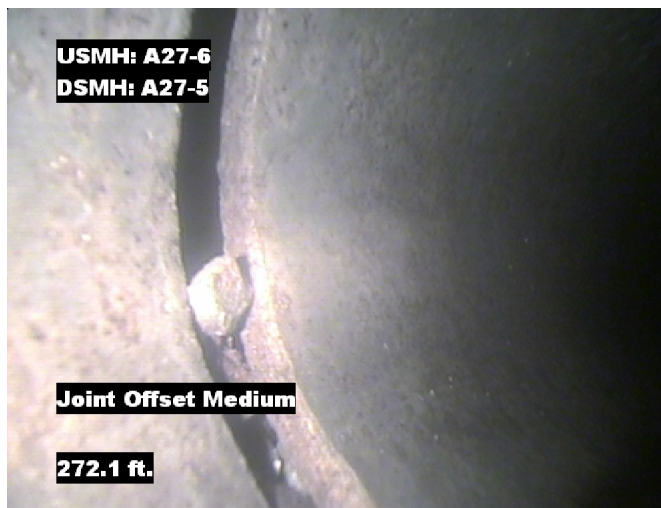


Distance: 269.4 ft. Grade: 0
Condition: Material Change
Remarks: PVC TO CP

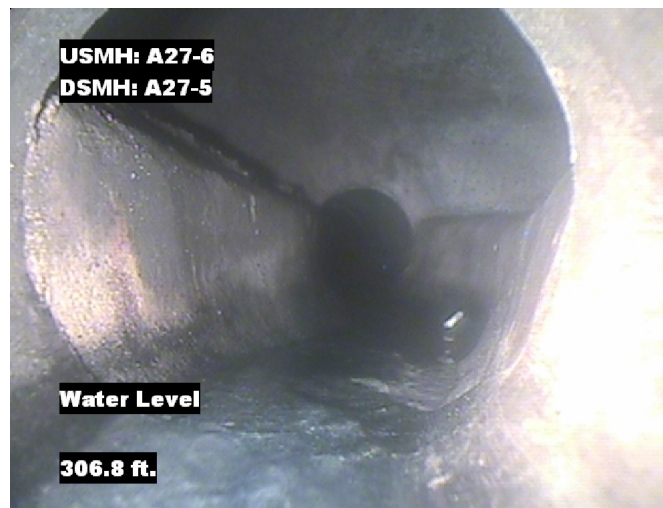


Image Report 4/Page

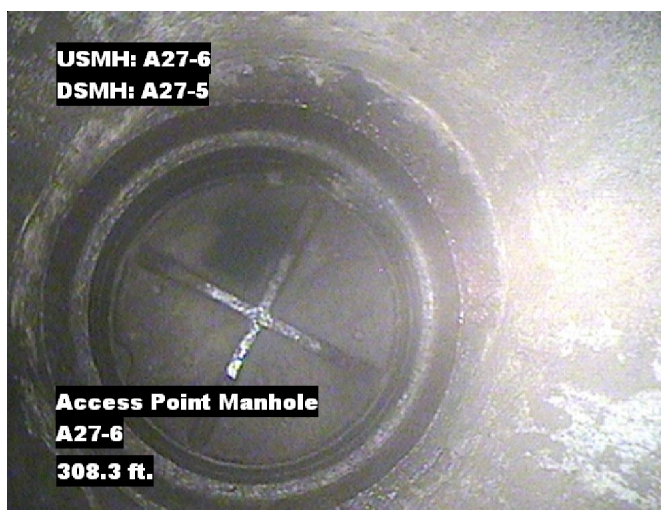
Pipe Segment Refere...	City	Street	Material	Location C...	Sewer Use
A27-6_A27-5	Oliver Springs	Springs St	Concrete Pipe (non-...	Light High...	Sanitary
Upstream MH A27-6	Total Length 308.3	Year Laid	Shape Circular	Location Details	
DS Manhole A27-5	Length surveyed 308.3	Year Renewed	Height 8	Width 8	Pipe Joint... 4



Distance: 272.1 ft. Grade: 1
Condition: Joint Offset Medium
Remarks: N/A



Distance: 306.8 ft. Grade: 0
Condition: Water Level
Remarks: N/A



Distance: 308.3 ft. Grade: 0
Condition: Access Point Manhole
Remarks: A27-6



PACP Conditions

Pipe Segment Refere... A27-6_A27-5	City Oliver Springs	Street Springs St	Material Concrete Pipe (non-...	Location C... Light High...	Sewer Use Sanitary
Upstream MH A27-6	Total Length 308.3	Year Laid	Shape Circular	Location Details	
DS Manhole A27-5	Length surveyed 308.3	Year Renewed	Height 8	Width 8	Pipe Joint... 4
SPR 3	MPR 14	PO Number 4397-03		Customer GRW	
SPRI 1.5	MPRI 2.3	Work Order 4397-02		Purpose Pre-Rehabilitation Survey	
QSR 2111	QMR 4125	Direction Upstream		Date 20150821	
OPR 17	Surveyed By Charlie Gordon	Pre-Cleaning Heavy Cleaning		Media label	
OPRI 2.1	Certificate Number U-615-07000491	Time 10:19		Weather Damp	
Date Cleaned 20150821			End Time 10:42		Additional Info

Normal Defects			Structural Ratings			O & M Ratings			Combined Ratings		
			Grade Rating	No. Occur.	Rating	Grade Rating	No. Occur.	Rating	Grade Rating	No. Occur.	Rating
Continuous Defects			1	1	1	1	0	0	1	1	1
			2	1	2	2	3	6	2	4	8
			3	0	0	3	0	0	3	0	0
			4	0	0	4	1	4	4	1	4
			5	0	0	5	0	0	5	0	0
Code	ID	Length	0	0	0	2	2	4	2	2	4
MWLS	F01	11.2									
			Subtotals	2		Subtotals	6		Subtotals	8	
SUMMARY			Pipe Rating	3		Pipe Rating	14		Overall Pipe Rating	17	
			Structural Index	1.5		O&M Index	2.3		Overall Index	2.1	
			Str. Quick Rating	2111		O&M Quick Rating	4125		Ovrl. Quick Rating	4126	