



## Defect Listing

Pipe Segment Refere... <b>A27-2_A27-1</b>	City <b>Oliver Springs</b>	Street <b>Springs St</b>	Material <b>Fibreglass Reinf...</b>	Location C... <b>Light High...</b>	Sewer Use <b>Sanitary</b>
Upstream MH <b>A27-2</b>	Total Length <b>249.3</b>	Year Laid	Shape <b>Circular</b>	Location Details	
DS Manhole <b>A27-1</b>	Length surveyed <b>249.3</b>	Year Renewed	Height <b>8</b>	Width <b>8</b>	Pipe Joint... <b>N/A</b>

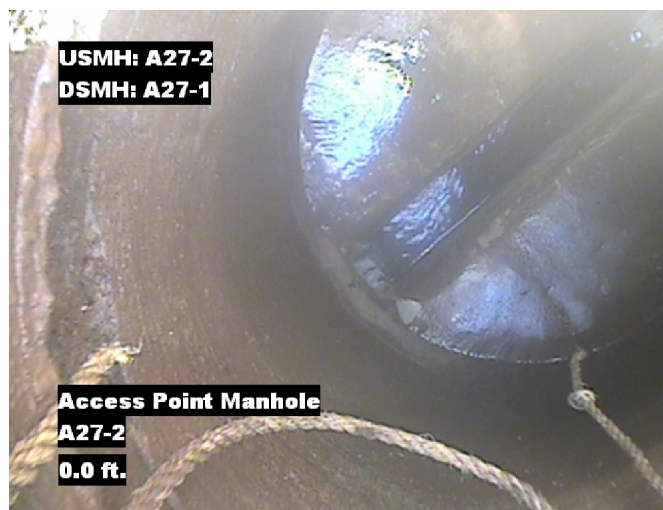
SPR <b>N/A</b>	MPR <b>15</b>	PO Number <b>4397-03</b>	Customer <b>GRW</b>
SPRI <b>N/A</b>	MPRI <b>2.1</b>	Work Order <b>4397-02</b>	Purpose <b>Pre-Rehabilitation Survey</b>
QSR <b>N/A</b>	QMR <b>3126</b>		
OPR <b>15</b>	Surveyed By <b>Charlie Gordon</b>	Direction <b>Downstream</b>	Date <b>20150821</b>
OPRI <b>2.1</b>	Certificate Number <b>U-615-07000491</b>	Pre-Cleaning <b>Jetting</b>	Time <b>14:49</b>
	Date Cleaned <b>20150821</b>	End Time <b>14:52</b>	Weather <b>Dry</b>
			Media label
			Additional Info

Distance	Condition	Cont. Dfct.	Values			Joint	Clock Position		Grade
			1st	2nd	%		At/From	To	
0.0 ft.	Access Point Manhole				0	<input type="checkbox"/>			
Remarks: A27-2									
0.0 ft.	Water Level				5	<input type="checkbox"/>			
187.0 ft.	Water Level Sag				10	<input type="checkbox"/>			2
190.3 ft.	Deposits Attached Grease				0	<input type="checkbox"/>	4	8	2
Remarks: This is a continious defect									
193.0 ft.	Water Level Sag	S01			15	<input type="checkbox"/>			2
199.9 ft.	Water Level Sag	F01			15	<input type="checkbox"/>			2
201.7 ft.	Water Level Sag				45	<input type="checkbox"/>			3
219.4 ft.	Water Level Sag				10	<input type="checkbox"/>			2
222.7 ft.	Water Level Sag				20	<input type="checkbox"/>			2
242.3 ft.	Water Level Sag				15	<input type="checkbox"/>			2
247.3 ft.	Water Level				5	<input type="checkbox"/>			
249.3 ft.	Access Point Manhole				0	<input type="checkbox"/>			
Remarks: A27-1									



## Image Report 4/Page

Pipe Segment Refere... <b>A27-2_A27-1</b>	City <b>Oliver Springs</b>	Street <b>Springs St</b>	Material <b>Fibreglass Reinforc...</b>		Location C... <b>Light High...</b>	Sewer Use <b>Sanitary</b>
Upstream MH <b>A27-2</b>	Total Length <b>249.3</b>	Year Laid	Shape <b>Circular</b>		Location Details	
DS Manhole <b>A27-1</b>	Length surveyed <b>249.3</b>	Year Renewed	Height <b>8</b>	Width <b>8</b>	Pipe Joint...	<b>N/A</b>



Distance: 0.0 ft. Grade: 0  
Condition: Access Point Manhole  
Remarks: A27-2



Distance: 0.0 ft. Grade: 0  
Condition: Water Level  
Remarks: N/A



Distance: 187.0 ft. Grade: 2  
Condition: Water Level Sag  
Remarks: N/A



Distance: 190.3 ft. Grade: 2  
Condition: Deposits Attached Grease  
Remarks: This is a continious defect

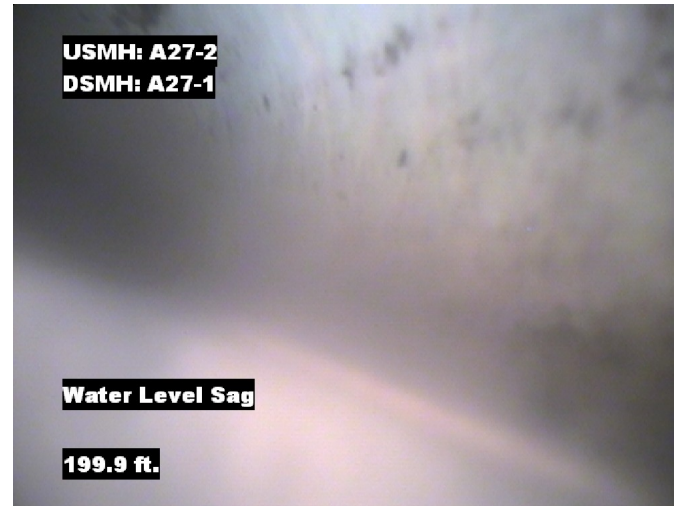


## Image Report 4/Page

Pipe Segment Refere...	City	Street	Material	Location C...	Sewer Use
A27-2_A27-1	Oliver Springs	Springs St	Fibreglass Reinforc...	Light High...	Sanitary
Upstream MH A27-2	Total Length 249.3	Year Laid	Shape Circular	Location Details	
DS Manhole A27-1	Length surveyed 249.3	Year Renewed	Height 8	Width 8	Pipe Joint... N/A



Distance: 193.0 ft. Grade: 2  
Condition: Water Level Sag  
Remarks: N/A



Distance: 199.9 ft. Grade: 2  
Condition: Water Level Sag  
Remarks: N/A



Distance: 201.7 ft. Grade: 3  
Condition: Water Level Sag  
Remarks: N/A

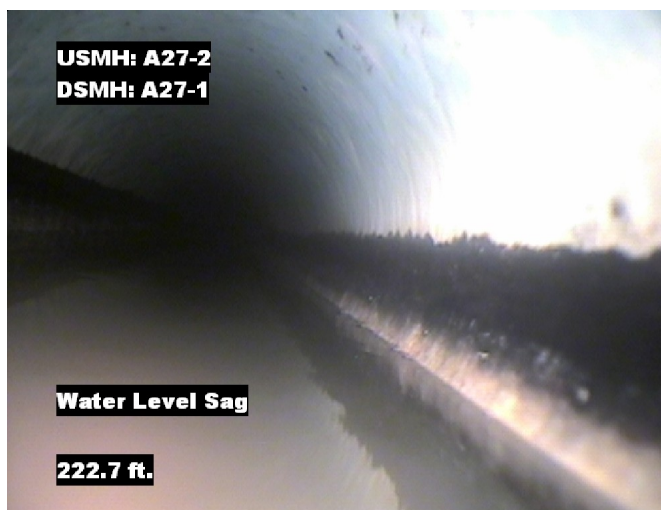


Distance: 219.4 ft. Grade: 2  
Condition: Water Level Sag  
Remarks: N/A



## Image Report 4/Page

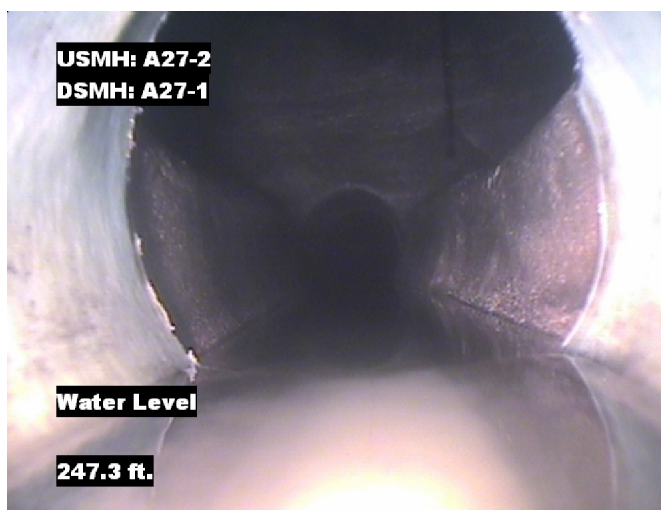
Pipe Segment Refere...	City	Street	Material	Location C...	Sewer Use
A27-2_A27-1	Oliver Springs	Springs St	Fibreglass Reinforc...	Light High...	Sanitary
Upstream MH A27-2	Total Length 249.3	Year Laid	Shape Circular	Location Details	
DS Manhole A27-1	Length surveyed 249.3	Year Renewed	Height 8	Width 8	Pipe Joint... N/A



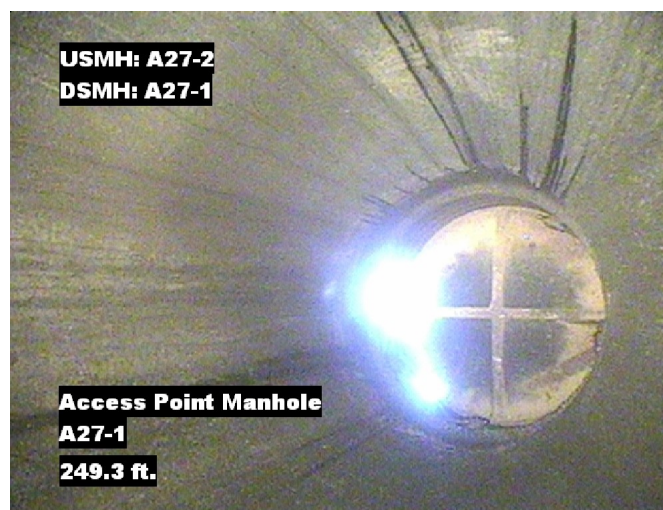
Distance: 222.7 ft. Grade: 2  
Condition: Water Level Sag  
Remarks: N/A



Distance: 242.3 ft. Grade: 2  
Condition: Water Level Sag  
Remarks: N/A



Distance: 247.3 ft. Grade: 0  
Condition: Water Level  
Remarks: N/A



Distance: 249.3 ft. Grade: 0  
Condition: Access Point Manhole  
Remarks: A27-1



## PACP Conditions

Pipe Segment Refere... <b>A27-2_A27-1</b>	City <b>Oliver Springs</b>	Street <b>Springs St</b>	Material <b>Fibreglass Reinforc...</b>	Location C... <b>Light High...</b>	Sewer Use <b>Sanitary</b>
Upstream MH <b>A27-2</b>	Total Length <b>249.3</b>	Year Laid	Shape <b>Circular</b>	Location Details	
DS Manhole <b>A27-1</b>	Length surveyed <b>249.3</b>	Year Renewed	Height <b>8</b>	Width <b>8</b>	Pipe Joint... <b>N/A</b>
SPR <b>N/A</b>	MPR <b>15</b>	PO Number <b>4397-03</b>		Customer <b>GRW</b>	
SPRI <b>N/A</b>	MPRI <b>2.1</b>	Work Order <b>4397-02</b>		Purpose <b>Pre-Rehabilitation Survey</b>	
QSR <b>N/A</b>	QMR <b>3126</b>				
OPR <b>15</b>	Surveyed By <b>Charlie Gordon</b>	Direction <b>Downstream</b>	Date <b>20150821</b>	Media label	
OPRI <b>2.1</b>	Certificate Number <b>U-615-07000491</b>	Pre-Cleaning <b>Jetting</b>	Time <b>14:49</b>	Weather <b>Dry</b>	
Date Cleaned <b>20150821</b>			End Time <b>14:52</b>	Additional Info	

Normal Defects			Structural Ratings			O & M Ratings			Combined Ratings		
			Grade Rating	No. Occur.	Rating	Grade Rating	No. Occur.	Rating	Grade Rating	No. Occur.	Rating
Continuous Defects			1	0	0	1	0	0	1	0	0
			2	0	0	2	5	10	2	5	10
			3	0	0	3	1	3	3	1	3
			4	0	0	4	0	0	4	0	0
			5	0	0	5	0	0	5	0	0
Code	ID	Length	0	0	0	2	1	2	2	1	2
MWLS	F01	6.9									
			Subtotals	0		Subtotals	7		Subtotals	7	
SUMMARY			Pipe Rating		0	Pipe Rating		15	Overall Pipe Rating		15
			Structural Index		0	O&M Index		2.1	Overall Index		2.1
			Str. Quick Rating		0000	O&M Quick Rating		3126	Ovrl. Quick Rating		3126