



## Defect Listing

Pipe Segment Refere... <b>A25-6_A25-5</b>	City <b>Oliver Springs</b>	Street <b>East St</b>	Material <b>Concrete Pipe (non-...</b>	Location C... <b>Light High...</b>	Sewer Use <b>Sanitary</b>
Upstream MH <b>A25-6</b>	Total Length <b>2</b>	Year Laid	Shape <b>Circular</b>	Location Details	
DS Manhole <b>A25-5</b>	Length surveyed <b>2</b>	Year Renewed	Height <b>8</b>	Width <b>8</b>	Pipe Joint... <b>4</b>

SPR <b>N/A</b>	MPR <b>N/A</b>	PO Number <b>4397-03</b>		Customer <b>GRW</b>	
SPRI <b>N/A</b>	MPRI <b>N/A</b>	Work Order <b>4397-02</b>		Purpose <b>Pre-Rehabilitation Survey</b>	
QSR <b>N/A</b>	QMR <b>N/A</b>				
OPR <b>N/A</b>	Surveyed By <b>Charlie Gordon</b>	Direction <b>Upstream</b>	Date <b>20150818</b>	Media label	
OPRI <b>N/A</b>	Certificate Number <b>U-615-07000491</b>	Pre-Cleaning <b>No Pre-Cleaning</b>	Time <b>12:57</b>	Weather <b>Damp</b>	
Date Cleaned			End Time <b>13:01</b>	Additional Info <b>UPSTREAM MANHOLE IS...</b>	

Distance	Condition	Cont. Dfct.	Values			Joint	Clock Position		Grade
			1st	2nd	%		At/From	To	
0.0 ft.	Access Point Manhole				0	<input type="checkbox"/>			
Remarks: A25-5									
0.0 ft.	Water Level				5	<input type="checkbox"/>			
2.0 ft.	Survey Abandoned				0	<input type="checkbox"/>			
Remarks: CAMERA CANNOT ACCESS INVERT OF DOWNSTREAM MANHOLE									

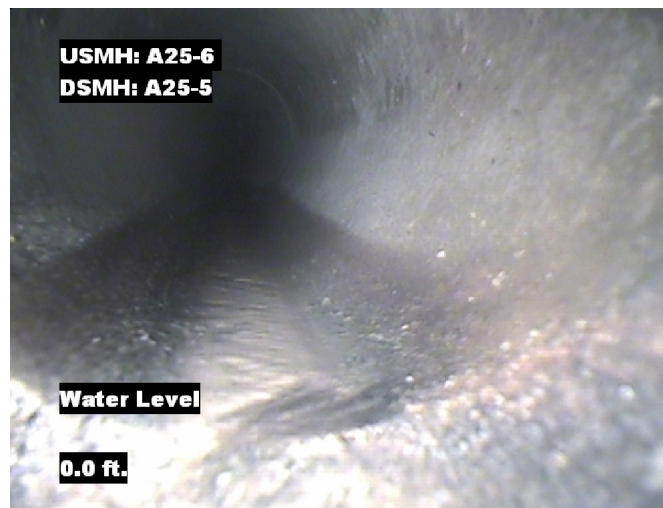


## Image Report 4/Page

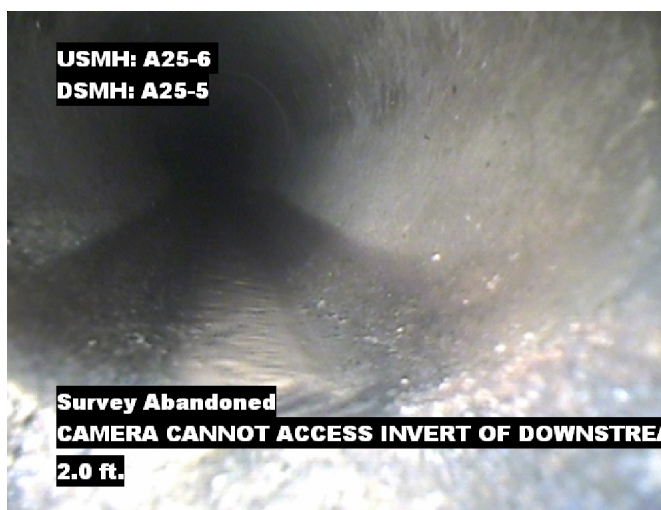
Pipe Segment Refere... <b>A25-6_A25-5</b>	<b>City</b> <b>Oliver Springs</b>	<b>Street</b> <b>East St</b>	<b>Material</b> <b>Concrete Pipe (non-...</b>		<b>Location C...</b> <b>Light High...</b>	<b>Sewer Use</b> <b>Sanitary</b>
<b>Upstream MH</b> <b>A25-6</b>	Total Length <b>2</b>	Year Laid	<b>Shape</b> <b>Circular</b>		Location Details	
<b>DS Manhole</b> <b>A25-5</b>	<b>Length surveyed</b> <b>2</b>	Year Renewed	<b>Height</b> <b>8</b>	Width <b>8</b>	Pipe Joint...	<b>4</b>



Distance: 0.0 ft. Grade: 0  
Condition: Access Point Manhole  
Remarks: A25-5



Distance: 0.0 ft. Grade: 0  
Condition: Water Level  
Remarks: N/A



Distance: 2.0 ft. Grade: 0  
Condition: Survey Abandoned  
Remarks: CAMERA CANNOT ACCESS INVERT OF DOWNSTREAM MANHOLE



Pipe Segment Refere... <b>A25-6_A25-5</b>	City <b>Oliver Springs</b>	Street <b>East St</b>	Material <b>Concrete Pipe (non-...</b>		Location C... <b>Light High...</b>	Sewer Use <b>Sanitary</b>
Upstream MH <b>A25-6</b>	Total Length <b>2</b>	Year Laid	Shape <b>Circular</b>		Location Details	
DS Manhole <b>A25-5</b>	Length surveyed <b>2</b>	Year Renewed	Height <b>8</b>	Width <b>8</b>	Pipe Joint... <b>4</b>	
SPR <b>N/A</b>	MPR <b>N/A</b>	PO Number <b>4397-03</b>			Customer <b>GRW</b>	
SPRI <b>N/A</b>	MPRI <b>N/A</b>	Work Order <b>4397-02</b>			Purpose	
QSR <b>N/A</b>	QMR <b>N/A</b>				Pre-Rehabilitation Survey	
OPR <b>N/A</b>	Surveyed By <b>Charlie Gordon</b>	Direction <b>Upstream</b>	Date <b>20150818</b>		Media label	
OPRI <b>N/A</b>	Certificate Number <b>U-615-07000491</b>	Pre-Cleaning <b>No Pre-Cleaning</b>	Time <b>12:57</b>		Weather <b>Damp</b>	
Date Cleaned			End Time <b>13:01</b>		Additional Info <b>UPSTREAM MANHOLE IS...</b>	

			Structural Ratings			O & M Ratings			Combined Ratings		
			Grade Rating	No. Occur.	Rating	Grade Rating	No. Occur.	Rating	Grade Rating	No. Occur.	Rating
Normal Defects											
<div>Continuous Defects</div> <div><div>CodeIDLength</div><div></div><div></div></div>			1	0	0	1	0	0	1	0	0
			2	0	0	2	0	0	2	0	0
			3	0	0	3	0	0	3	0	0
			4	0	0	4	0	0	4	0	0
			5	0	0	5	0	0	5	0	0
Subtotals			0			Subtotals	0		Subtotals	0	
SUMMARY			Pipe Rating	0		Pipe Rating	0		Overall Pipe Rating	0	
			Structural Index	0		O&M Index	0		Overall Index	0	
			Str. Quick Rating	0000		O&M Quick Rating	0000		Ovrl. Quick Rating	0000	