



## Defect Listing

Pipe Segment Refere... <b>A24-2_A24-1A</b>	City <b>Oliver Springs</b>	Street <b>Morgen St</b>	Material <b>Concrete Pipe (non-...</b>	Location C... <b>Light High...</b>	Sewer Use <b>Sanitary</b>
Upstream MH <b>A24-2</b>	Total Length <b>241.5</b>	Year Laid	Shape <b>Circular</b>	Location Details	
DS Manhole <b>A24-1A</b>	Length surveyed <b>241.5</b>	Year Renewed	Height <b>8</b>	Width <b>8</b>	Pipe Joint... <b>4</b>

SPR <b>16</b>	MPR <b>2</b>	PO Number <b>4397-03</b>	Customer <b>GRW</b>
SPRI <b>3.2</b>	MPRI <b>2</b>	Work Order <b>4397-02</b>	Purpose <b>Pre-Rehabilitation Survey</b>
QSR <b>5231</b>	QMR <b>2100</b>		
OPR <b>18</b>	Surveyed By <b>Barry Rogers</b>	Direction <b>Downstream</b>	Date <b>20150803</b>
OPRI <b>3</b>	Certificate Number <b>U-1012-16405</b>	Pre-Cleaning <b>Jetting</b>	Time <b>08:24</b>
	Date Cleaned <b>20150803</b>	End Time <b>08:43</b>	Weather <b>Damp</b>
			Media label
			Additional Info

Distance	Condition	Cont. Dfct.	Values			Joint	Clock Position		Grade
			1st	2nd	%		At/From	To	
0.0 ft.	Access Point Manhole				0	<input type="checkbox"/>			
Remarks: A24-2									
0.0 ft.	Water Level				5	<input type="checkbox"/>			
53.3 ft.	Joint Offset Large				0	<input type="checkbox"/>			2
53.9 ft.	Hole Soil Visible				0	<input type="checkbox"/>	12		5
56.0 ft.	Hole Soil Visible				0	<input type="checkbox"/>	12		5
56.0 ft.	Joint Offset Medium				0	<input type="checkbox"/>			1
56.3 ft.	Hole				0	<input type="checkbox"/>	6		3
165.2 ft.	Tap Factory Made		6		0	<input type="checkbox"/>	3		
181.6 ft.	Tap Factory Made		6		0	<input type="checkbox"/>	9		
237.4 ft.	Water Level Sag				10	<input type="checkbox"/>			2
241.0 ft.	Tap Factory Made		6		0	<input type="checkbox"/>	6		
241.0 ft.	Water Level				5	<input type="checkbox"/>			
241.5 ft.	Access Point Manhole				0	<input type="checkbox"/>			
Remarks: A24-1A									

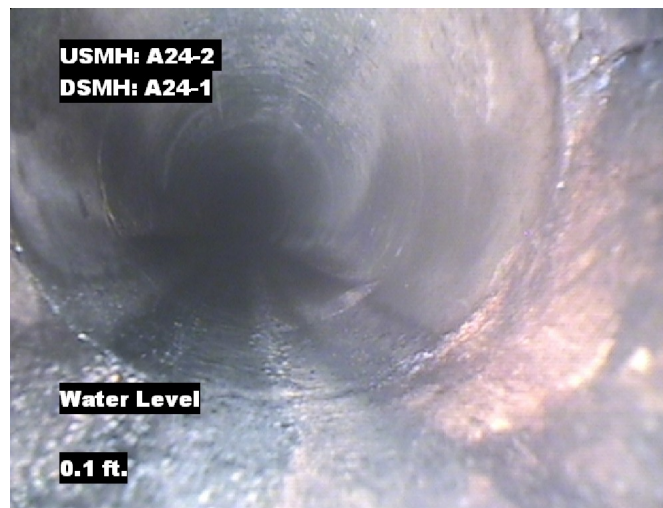


## Image Report 4/Page

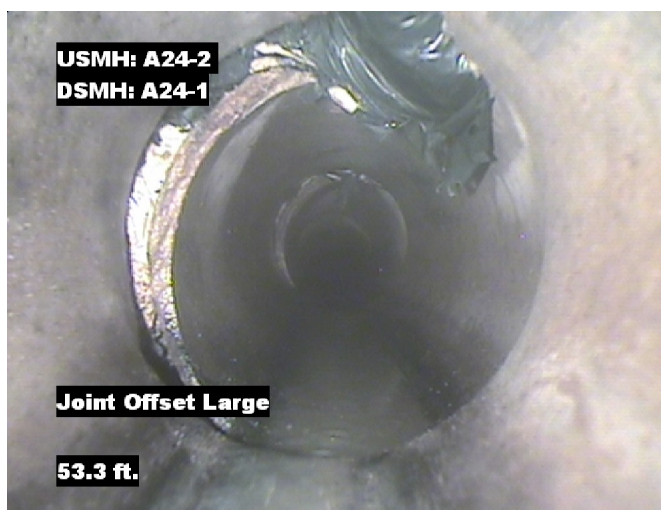
Pipe Segment Refere...	City	Street	Material	Location C...	Sewer Use
A24-2_A24-1A	Oliver Springs	Morgen St	Concrete Pipe (non-...	Light High...	Sanitary
Upstream MH A24-2	Total Length 241.5	Year Laid	Shape Circular	Location Details	
DS Manhole A24-1A	Length surveyed 241.5	Year Renewed	Height 8	Width 8	Pipe Joint... 4



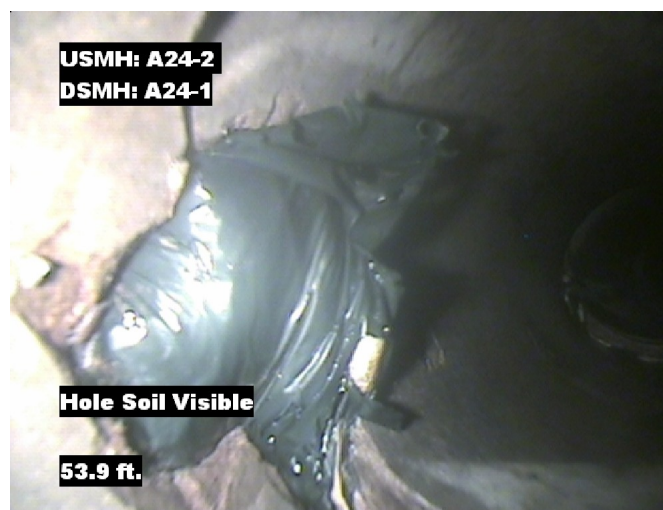
Distance: 0.0 ft. Grade: 0  
Condition: Access Point Manhole  
Remarks: A24-2



Distance: 0.0 ft. Grade: 0  
Condition: Water Level  
Remarks: N/A



Distance: 53.3 ft. Grade: 2  
Condition: Joint Offset Large  
Remarks: N/A

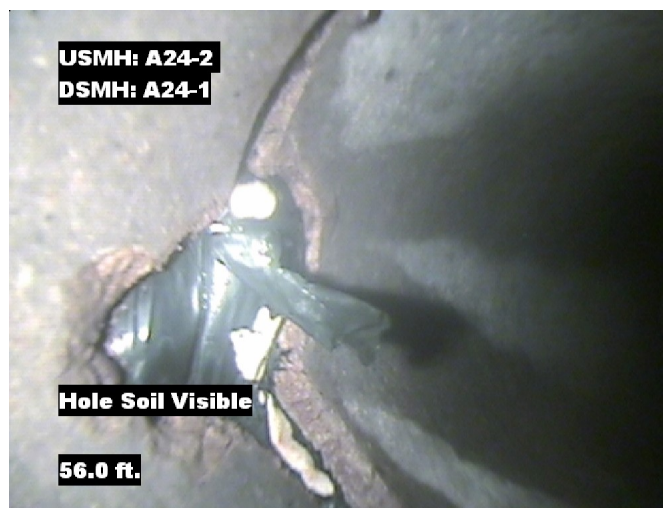


Distance: 53.9 ft. Grade: 5  
Condition: Hole Soil Visible  
Remarks: N/A

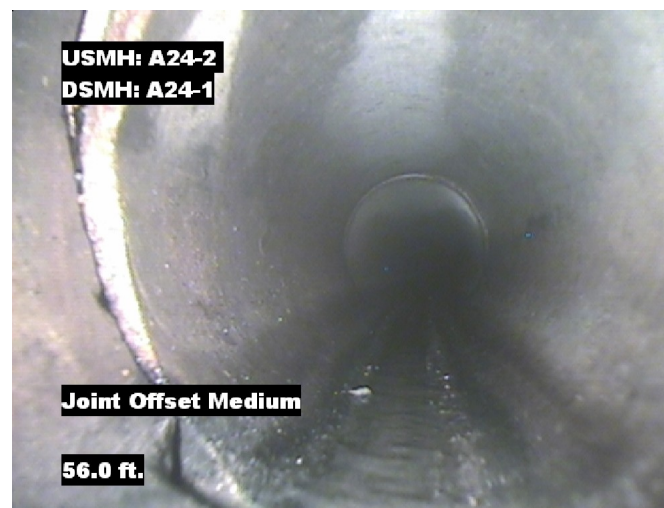


## Image Report 4/Page

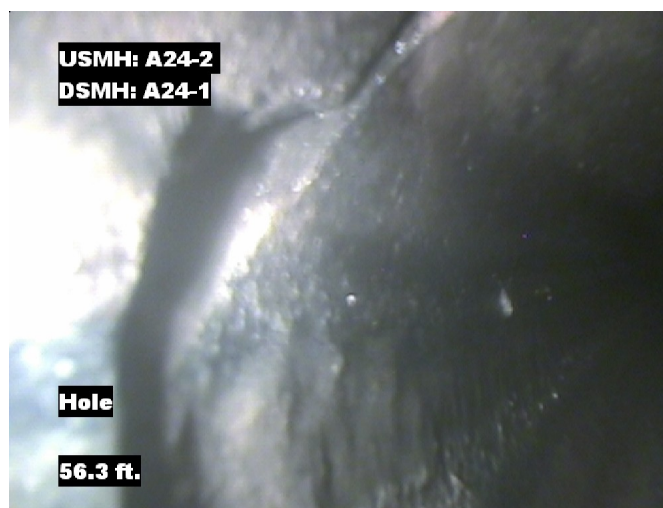
Pipe Segment Refere...	City	Street	Material	Location C...	Sewer Use
<b>A24-2_A24-1A</b>	<b>Oliver Springs</b>	<b>Morgen St</b>	<b>Concrete Pipe (non-...</b>	<b>Light High...</b>	<b>Sanitary</b>
<b>Upstream MH</b>	Total Length	Year Laid	<b>Shape</b>	Location Details	
<b>A24-2</b>	<b>241.5</b>		<b>Circular</b>		
<b>DS Manhole</b>	<b>Length surveyed</b>	Year Renewed	<b>Height</b>	Width	Pipe Joint...
<b>A24-1A</b>	<b>241.5</b>		<b>8</b>	<b>8</b>	<b>4</b>



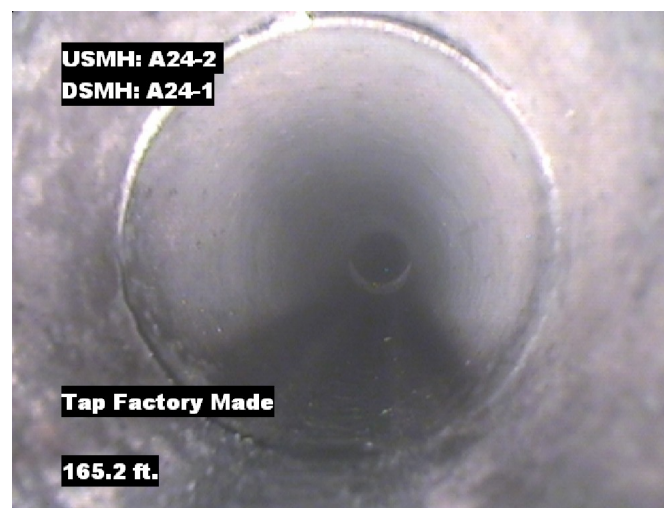
Distance: 56.0 ft. Grade: 5  
Condition: Hole Soil Visible  
Remarks: N/A



Distance: 56.0 ft. Grade: 1  
Condition: Joint Offset Medium  
Remarks: N/A



Distance: 56.3 ft. Grade: 3  
Condition: Hole  
Remarks: N/A



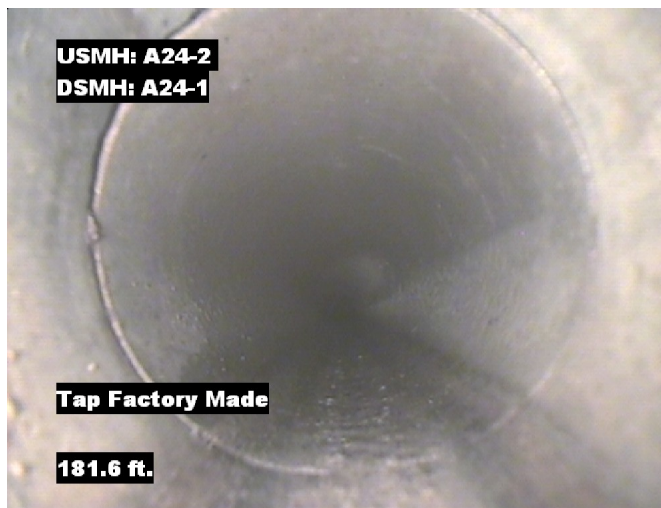
Distance: 165.2 ft. Grade: 0  
Condition: Tap Factory Made  
Remarks: N/A



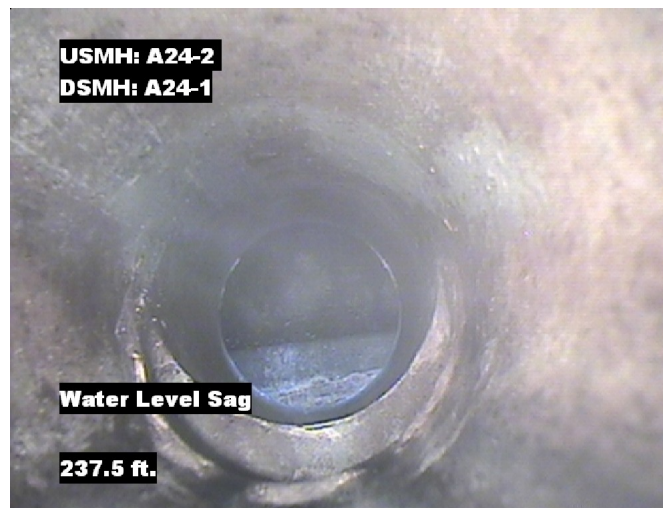


## Image Report 4/Page

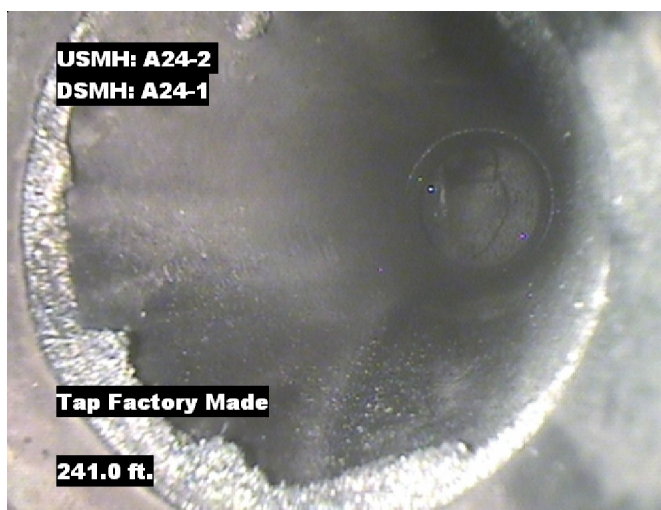
Pipe Segment Refere...	City	Street	Material	Location C...	Sewer Use
<b>A24-2_A24-1A</b>	<b>Oliver Springs</b>	<b>Morgen St</b>	<b>Concrete Pipe (non-...</b>	<b>Light High...</b>	<b>Sanitary</b>
<b>Upstream MH</b> <b>A24-2</b>	Total Length <b>241.5</b>	Year Laid	<b>Shape</b> <b>Circular</b>	Location Details	
<b>DS Manhole</b> <b>A24-1A</b>	<b>Length surveyed</b> <b>241.5</b>	Year Renewed	<b>Height</b> <b>8</b>	Width <b>8</b>	Pipe Joint... <b>4</b>



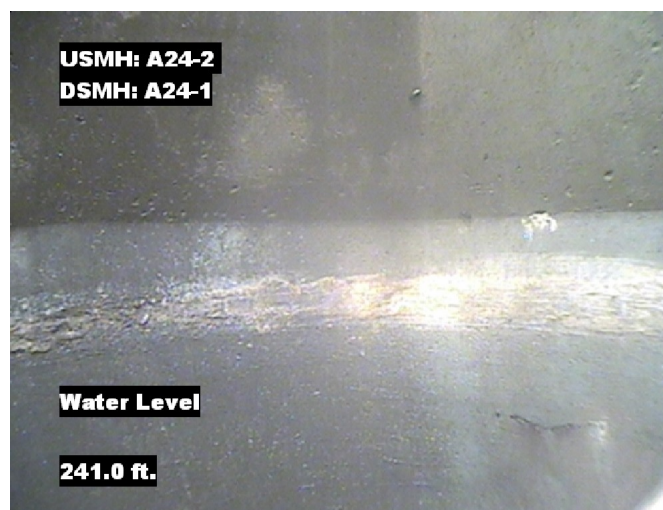
Distance: 181.6 ft. Grade: 0  
Condition: Tap Factory Made  
Remarks: N/A



Distance: 237.4 ft. Grade: 2  
Condition: Water Level Sag  
Remarks: N/A



Distance: 241.0 ft. Grade: 0  
Condition: Tap Factory Made  
Remarks: N/A



Distance: 241.0 ft. Grade: 0  
Condition: Water Level  
Remarks: N/A



## Image Report 4/Page

Pipe Segment Refere...	City	Street	Material	Location C...	Sewer Use
<b>A24-2_A24-1A</b>	<b>Oliver Springs</b>	<b>Morgen St</b>	<b>Concrete Pipe (non-...</b>	<b>Light High...</b>	<b>Sanitary</b>
<b>Upstream MH</b> <b>A24-2</b>	Total Length <b>241.5</b>	Year Laid	<b>Shape</b> <b>Circular</b>	Location Details	
<b>DS Manhole</b> <b>A24-1A</b>	<b>Length surveyed</b> <b>241.5</b>	Year Renewed	<b>Height</b> <b>8</b>	Width <b>8</b>	Pipe Joint... <b>4</b>



Distance: 241.5 ft. Grade: 0  
Condition: Access Point Manhole  
Remarks: A24-1A



Pipe Segment Refere... A24-2_A24-1A	City Oliver Springs	Street Morgen St	Material Concrete Pipe (non-...		Location C... Light High...	Sewer Use Sanitary
Upstream MH A24-2	Total Length 241.5	Year Laid	Shape Circular		Location Details	
DS Manhole A24-1A	Length surveyed 241.5	Year Renewed	Height 8	Width 8	Pipe Joint... 4	
SPR 16	MPR 2	PO Number 4397-03		Customer GRW		
SPRI 3.2	MPRI 2	Work Order 4397-02		Purpose		
QSR 5231	QMR 2100			Pre-Rehabilitation Survey		
OPR 18	Surveyed By Barry_Rogers	Direction Downstream	Date 20150803		Media label	
OPRI 3	Certificate Number U-1012-16405	Pre-Cleaning Jetting	Time 08:24		Weather Damp	
Date Cleaned 20150803			End Time 08:43		Additional Info	

Page #: 6