



## Defect Listing

Pipe Segment Refere... <b>A22-1_A21-2</b>	City <b>Oliver Springs</b>	Street <b>Fritts</b>	Material <b>Concrete Pipe (non-...</b>	Location C... <b>Light High...</b>	Sewer Use <b>Sanitary</b>
Upstream MH <b>A22-1</b>	Total Length <b>280</b>	Year Laid	Shape <b>Circular</b>	Location Details	
DS Manhole <b>A21-2</b>	Length surveyed <b>280</b>	Year Renewed	Height <b>8</b>	Width <b>8</b>	Pipe Joint... <b>4</b>

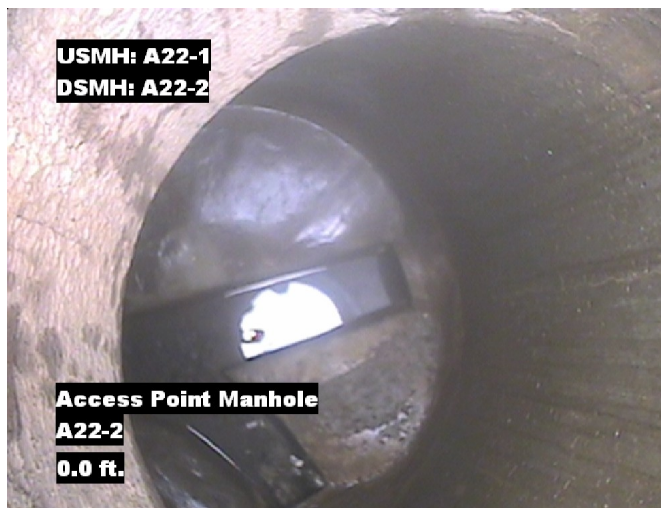
SPR <b>3</b>	MPR <b>N/A</b>	PO Number <b>4397-03</b>	Customer <b>GRW</b>
SPRI <b>3</b>	MPRI <b>N/A</b>	Work Order <b>4397-02</b>	Purpose <b>Pre-Rehabilitation Survey</b>
QSR <b>3100</b>	QMR <b>N/A</b>		
OPR <b>3</b>	Surveyed By <b>Barry Rogers</b>	Direction <b>Upstream</b>	Date <b>20150805</b>
OPRI <b>3</b>	Certificate Number <b>U-1012-16405</b>	Pre-Cleaning <b>Jetting</b>	Time <b>07:31</b>
	Date Cleaned <b>20150805</b>	End Time <b>07:52</b>	Weather <b>Very Dry</b>
			Media label
			Additional Info

Distance	Condition	Cont. Dfct.	Values			Joint	Clock Position		Grade
			1st	2nd	%		At/From	To	
0.0 ft.	Access Point Manhole				0	<input type="checkbox"/>			
Remarks: A22-2									
0.0 ft.	Water Level				5	<input type="checkbox"/>			
227.7 ft.	Tap Factory Made		6		0	<input type="checkbox"/>	9		
244.2 ft.	Tap Factory Made		6		0	<input type="checkbox"/>	3		
277.4 ft.	Hole				0	<input type="checkbox"/>	6		3
280.0 ft.	Survey Abandoned				0	<input type="checkbox"/>			
Remarks: Unable to Crawl Up hill and Up stream MH Buried									

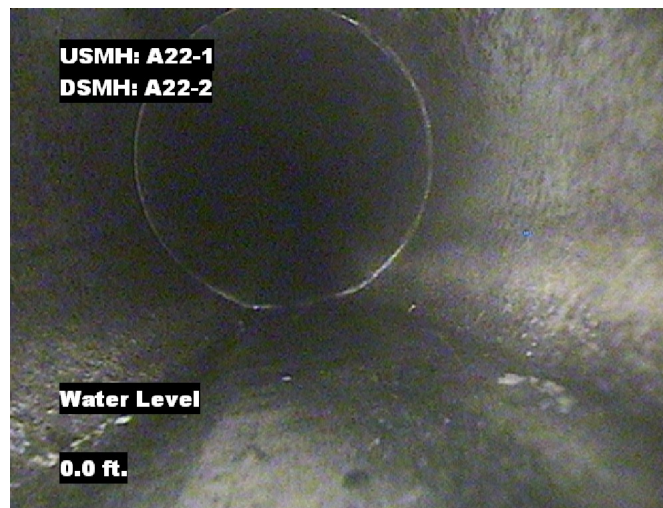


## Image Report 4/Page

Pipe Segment Refere...	City	Street	Material	Location C...	Sewer Use
A22-1_A21-2	Oliver Springs	Fritts	Concrete Pipe (non-...	Light High...	Sanitary
Upstream MH A22-1	Total Length 280	Year Laid	Shape Circular	Location Details	
DS Manhole A21-2	Length surveyed 280	Year Renewed	Height 8	Width 8	Pipe Joint... 4



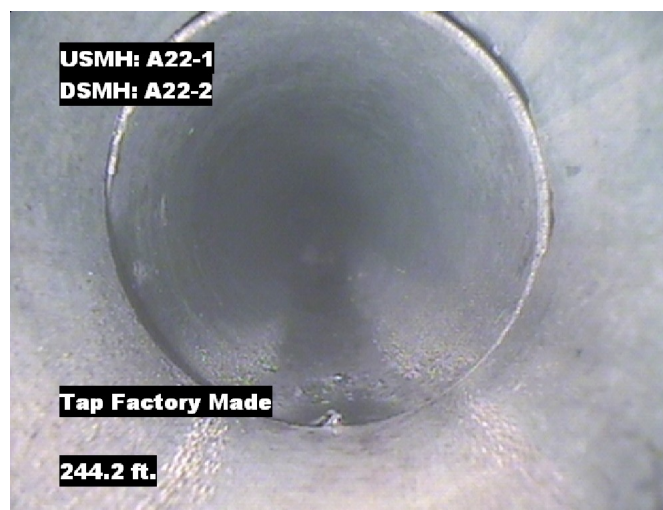
Distance: 0.0 ft. Grade: 0  
Condition: Access Point Manhole  
Remarks: A22-2



Distance: 0.0 ft. Grade: 0  
Condition: Water Level  
Remarks: N/A



Distance: 227.7 ft. Grade: 0  
Condition: Tap Factory Made  
Remarks: N/A

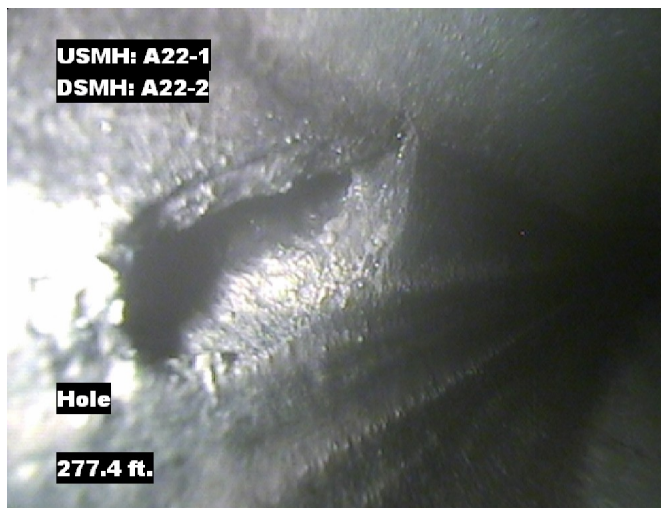


Distance: 244.2 ft. Grade: 0  
Condition: Tap Factory Made  
Remarks: N/A

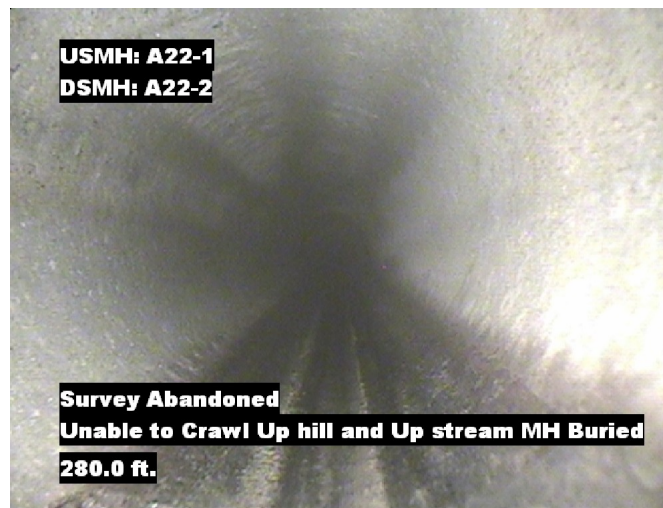


## Image Report 4/Page

Pipe Segment Refere... <b>A22-1_A21-2</b>	<b>City</b> <b>Oliver Springs</b>	<b>Street</b> <b>Fritts</b>	<b>Material</b> <b>Concrete Pipe (non-...</b>		<b>Location C...</b> <b>Light High...</b>	<b>Sewer Use</b> <b>Sanitary</b>
<b>Upstream MH</b> <b>A22-1</b>	Total Length <b>280</b>	Year Laid	<b>Shape</b> <b>Circular</b>		Location Details	
<b>DS Manhole</b> <b>A21-2</b>	<b>Length surveyed</b> <b>280</b>	Year Renewed	<b>Height</b> <b>8</b>	Width <b>8</b>	Pipe Joint...	<b>4</b>



Distance: 277.4 ft. Grade: 3  
Condition: Hole  
Remarks: N/A



Distance: 280.0 ft. Grade: 0  
Condition: Survey Abandoned  
Remarks: Unable to Crawl Up hill and Up stream MH Buried



ITpipes  
4921 Alexander Blvd  
Albuquerque, NM  
505-341-0109

Pipe Segment Refere... A22-1_A21-2	City Oliver Springs	Street Fritts	Material Concrete Pipe (non-...		Location C... Light High...	Sewer Use Sanitary
Upstream MH A22-1	Total Length 280	Year Laid	Shape Circular		Location Details	
DS Manhole A21-2	Length surveyed 280	Year Renewed	Height 8	Width 8	Pipe Joint...	
SPR 3	MPR N/A	PO Number 4397-03		Customer GRW		
SPRI 3	MPRI N/A	Work Order		Purpose		
QSR 3100	QMR N/A	4397-02		Pre-Rehabilitation Survey		
OPR 3	Surveyed By Barry_Rogers	Direction Upstream	Date 20150805		Media label	
OPRI 3	Certificate Number U-1012-16405	Pre-Cleaning Jetting	Time 07:31		Weather Very Dry	
Date Cleaned 20150805			End Time 07:52		Additional Info	

			Structural Ratings			O & M Ratings			Combined Ratings		
			Grade Rating	No. Occur.	Rating	Grade Rating	No. Occur.	Rating	Grade Rating	No. Occur.	Rating
Normal Defects											
Continuous Defects  Code   ID   Length			1	0	0	1	0	0	1	0	0
			2	0	0	2	0	0	2	0	0
			3	1	3	3	0	0	3	1	3
			4	0	0	4	0	0	4	0	0
			5	0	0	5	0	0	5	0	0
			Subtotals	1		Subtotals	0		Subtotals	1	
<b>SUMMARY</b>			Pipe Rating Structural Index Str. Quick Rating	3 3.0 3100	Pipe Rating O&M Index O&M Quick Rating	0 0 0000	Overall Pipe Rating Overall Index Ovrl. Quick Rating	3 3.0 3100			