



## Defect Listing

Pipe Segment Refere... <b>A20-6_A20-5</b>	City <b>Oliver Springs</b>	Street <b>Hwy62 Exit Ramp</b>	Material <b>PolyVinyl Chloride</b>	Location C... <b>Main Highw...</b>	Sewer Use <b>Sanitary</b>
Upstream MH <b>A20-6</b>	Total Length <b>270.2</b>	Year Laid	Shape <b>Circular</b>	Location Details	
DS Manhole <b>A20-5</b>	Length surveyed <b>270.2</b>	Year Renewed	Height <b>8</b>	Width <b>8</b>	Pipe Joint... <b>13</b>

SPR <b>N/A</b>	MPR <b>2</b>	PO Number <b>4397-03</b>	Customer <b>GRW</b>
SPRI <b>N/A</b>	MPRI <b>2</b>	Work Order <b>4397-02</b>	Purpose <b>Pre-Rehabilitation Survey</b>
QSR <b>N/A</b>	QMR <b>2100</b>		
OPR <b>2</b>	Surveyed By <b>Barry Rogers</b>	Direction <b>Downstream</b>	Date <b>20150806</b>
OPRI <b>2</b>	Certificate Number <b>U-1012-16405</b>	Pre-Cleaning <b>Jetting</b>	Time <b>14:49</b>
	Date Cleaned <b>20150806</b>	End Time <b>15:06</b>	Weather <b>Heavy Rain</b>
			Media label
			Additional Info

Distance	Condition	Cont. Dfct.	Values			Joint	Clock Position		Grade
			1st	2nd	%		At/From	To	
0.0 ft.	Access Point Manhole				0	<input type="checkbox"/>			
Remarks: A20-6									
0.0 ft.	Water Level				5	<input type="checkbox"/>			
146.8 ft.	Water Level Sag				15	<input type="checkbox"/>			2
268.2 ft.	Water Level				5	<input type="checkbox"/>			
270.2 ft.	Access Point Manhole				0	<input type="checkbox"/>			
Remarks: A20-5									

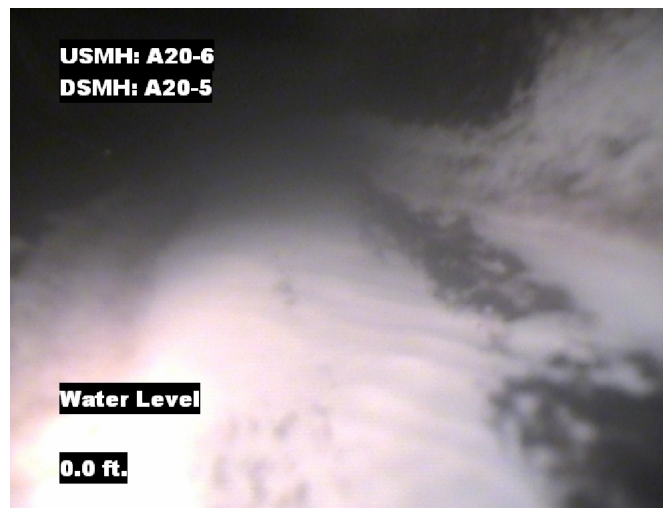


## Image Report 4/Page

Pipe Segment Refere...	City	Street	Material	Location C...	Sewer Use
A20-6_A20-5	Oliver Springs	Hwy62 Exit Ramp	PolyVinyl Chloride	Main Highw...	Sanitary
Upstream MH A20-6	Total Length 270.2	Year Laid	Shape Circular	Location Details	
DS Manhole A20-5	Length surveyed 270.2	Year Renewed	Height 8	Width 8	Pipe Joint... 13



Distance: 0.0 ft. Grade: 0  
Condition: Access Point Manhole  
Remarks: A20-6



Distance: 0.0 ft. Grade: 0  
Condition: Water Level  
Remarks: N/A



Distance: 146.8 ft. Grade: 2  
Condition: Water Level Sag  
Remarks: N/A

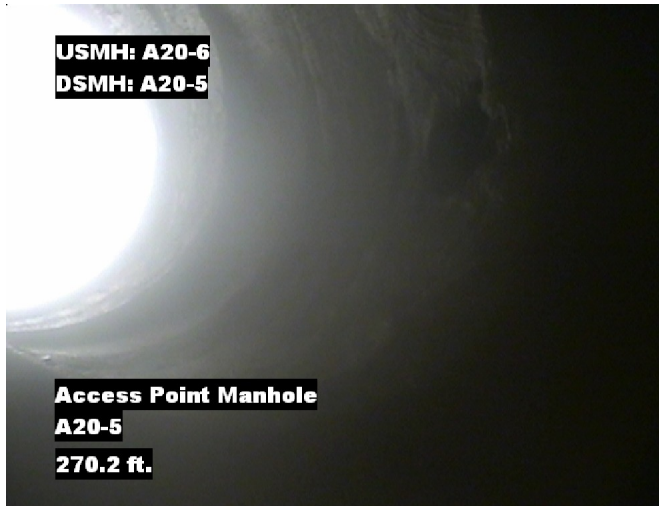


Distance: 268.2 ft. Grade: 0  
Condition: Water Level  
Remarks: N/A



## Image Report 4/Page

Pipe Segment Refere...	City	Street	Material	Location C...	Sewer Use
<b>A20-6_A20-5</b>	<b>Oliver Springs</b>	<b>Hwy62 Exit Ramp</b>	<b>PolyVinyl Chloride</b>	<b>Main Highw...</b>	<b>Sanitary</b>
<b>Upstream MH</b> <b>A20-6</b>	Total Length <b>270.2</b>	Year Laid	<b>Shape</b> <b>Circular</b>	Location Details	
<b>DS Manhole</b> <b>A20-5</b>	<b>Length surveyed</b> <b>270.2</b>	Year Renewed	<b>Height</b> <b>8</b>	Width <b>8</b>	Pipe Joint... <b>13</b>



Distance: 270.2 ft.      Grade: 0  
Condition: Access Point Manhole  
Remarks: A20-5



Pipe Segment Refere... A20-6_A20-5	City Oliver Springs	Street Hwy62 Exit Ramp	Material PolyVinyl Chloride		Location C... Main Highw...	Sewer Use Sanitary
Upstream MH A20-6	Total Length 270.2	Year Laid	Shape Circular		Location Details	
DS Manhole A20-5	Length surveyed 270.2	Year Renewed	Height 8	Width 8	Pipe Joint... 13	
SPR N/A	MPR 2	PO Number 4397-03		Customer GRW		
SPRI N/A	MPRI 2	Work Order 4397-02		Purpose		
QSR N/A	QMR 2100			Pre-Rehabilitation Survey		
OPR 2	Surveyed By Barry_Rogers	Direction Downstream	Date 20150806		Media label	
OPRI 2	Certificate Number U-1012-16405	Pre-Cleaning Jetting	Time 14:49		Weather Heavy Rain	
Date Cleaned 20150806			End Time 15:06		Additional Info	

			Structural Ratings		O & M Ratings		Combined Ratings				
			Grade Rating	No. Occur.	Rating	Grade Rating	No. Occur.	Rating	Grade Rating	No. Occur.	Rating
Normal Defects											
Continuous Defects			1	0	0	1	0	0	1	0	0
			2	0	0	2	1	2	2	1	2
			3	0	0	3	0	0	3	0	0
			4	0	0	4	0	0	4	0	0
			5	0	0	5	0	0	5	0	0
Code	ID	Length									