



## Defect Listing

Pipe Segment Refere... <b>A2-4_A2-3</b>	City <b>Oliver Springs</b>	Street <b>Kington St</b>	Material <b>Fibreglass Reinforc...</b>	Location C... <b>Light High...</b>	Sewer Use <b>Sanitary</b>
Upstream MH <b>A2-4</b>	Total Length <b>252.6</b>	Year Laid	Shape <b>Circular</b>	Location Details	
DS Manhole <b>A2-3</b>	Length surveyed <b>252.6</b>	Year Renewed	Height <b>8</b>	Width <b>8</b>	Pipe Joint... <b>N/A</b>

SPR <b>N/A</b>	MPR <b>N/A</b>	PO Number <b>4397-03</b>		Customer <b>GRW</b>	
SPRI <b>N/A</b>	MPRI <b>N/A</b>	Work Order <b>4397-02</b>		Purpose <b>Pre-Rehabilitation Survey</b>	
QSR <b>N/A</b>	QMR <b>N/A</b>				
OPR <b>N/A</b>	Surveyed By <b>Charlie Gordon</b>	Direction <b>Downstream</b>	Date <b>20150818</b>	Media label	
OPRI <b>N/A</b>	Certificate Number <b>U-615-07000491</b>	Pre-Cleaning <b>Jetting</b>	Time <b>09:51</b>	Weather <b>Light Rain</b>	
Date Cleaned <b>20150818</b>			End Time <b>10:16</b>	Additional Info	

Distance	Condition	Cont. Dfct.	Values			Joint	Clock Position		Grade
			1st	2nd	%		At/From	To	
0.0 ft.	Access Point Manhole				0	<input type="checkbox"/>			
Remarks: A2-4									
0.0 ft.	Water Level				5	<input type="checkbox"/>			
8.0 ft.	Tap Factory Made		6		0	<input type="checkbox"/>	9		
29.8 ft.	Tap Factory Made Active		6		0	<input type="checkbox"/>	3		
44.9 ft.	Tap Factory Made		6		0	<input type="checkbox"/>	9		
71.5 ft.	Tap Factory Made		6		0	<input type="checkbox"/>	3		
75.5 ft.	Tap Factory Made		6		0	<input type="checkbox"/>	3		
138.0 ft.	Tap Factory Made		6		0	<input type="checkbox"/>	9		
141.1 ft.	Tap Factory Made		6		0	<input type="checkbox"/>	3		
218.4 ft.	Tap Factory Made		6		0	<input type="checkbox"/>	3		
234.2 ft.	Tap Factory Made		6		0	<input type="checkbox"/>	9		
249.3 ft.	Water Level				5	<input type="checkbox"/>			
252.6 ft.	Access Point Manhole				0	<input type="checkbox"/>			
Remarks: A2-3									

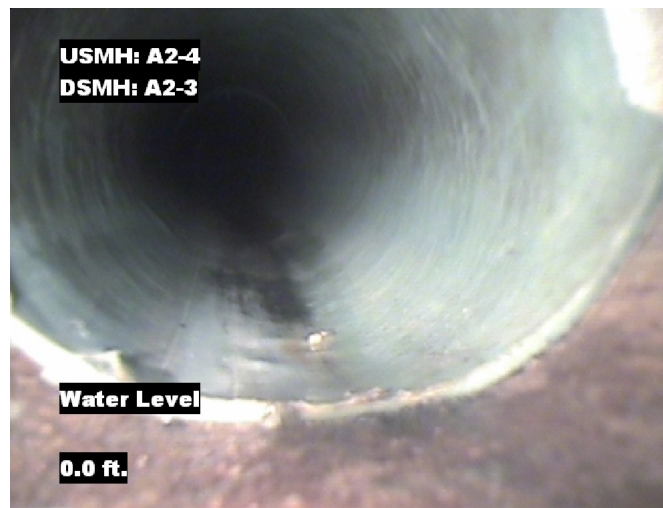


## Image Report 4/Page

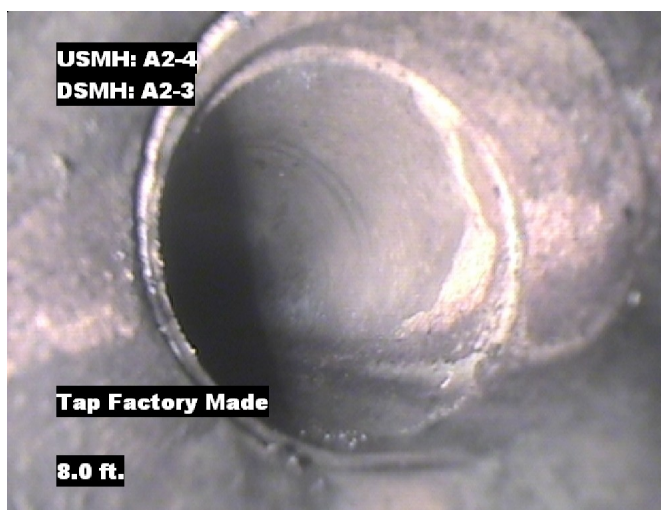
Pipe Segment Refere...	City	Street	Material	Location C...	Sewer Use
A2-4_A2-3	Oliver Springs	Kington St	Fibreglass Reinforc...	Light High...	Sanitary
Upstream MH	Total Length	Year Laid	Shape	Location Details	
A2-4	252.6		Circular		
DS Manhole	Length surveyed	Year Renewed	Height	Width	Pipe Joint...
A2-3	252.6		8	8	N/A



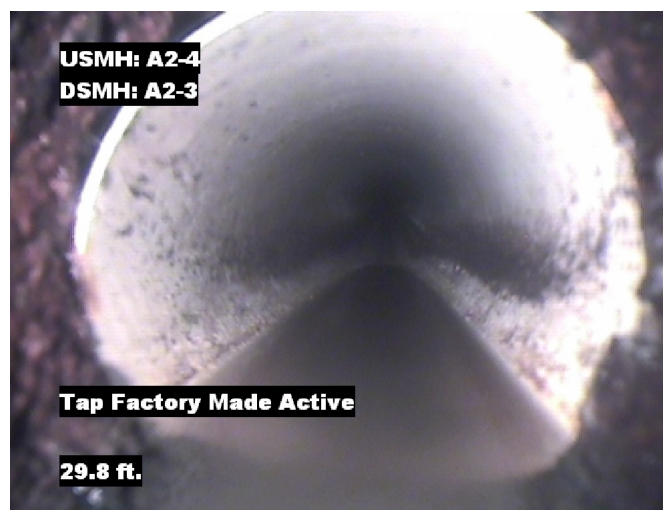
Distance: 0.0 ft. Grade: 0  
Condition: Access Point Manhole  
Remarks: A2-4



Distance: 0.0 ft. Grade: 0  
Condition: Water Level  
Remarks: N/A



Distance: 8.0 ft. Grade: 0  
Condition: Tap Factory Made  
Remarks: N/A

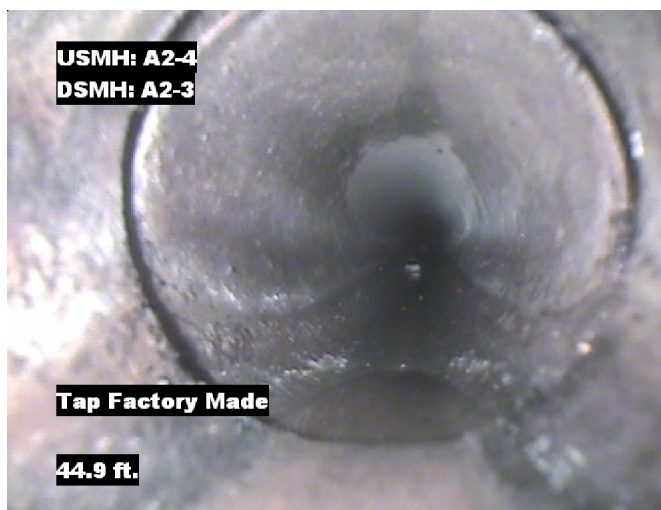


Distance: 29.8 ft. Grade: 0  
Condition: Tap Factory Made Active  
Remarks: N/A

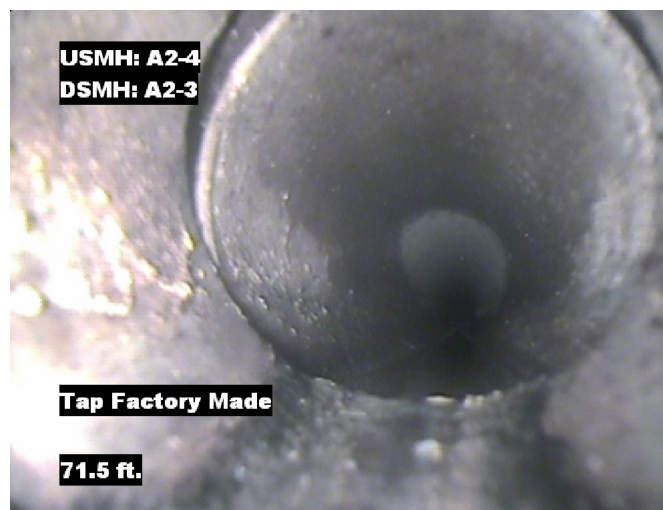


## Image Report 4/Page

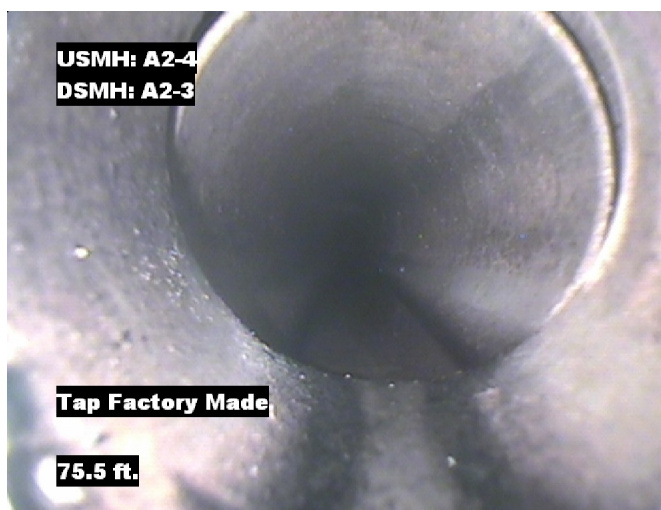
Pipe Segment Refere...	City	Street	Material	Location C...	Sewer Use
A2-4_A2-3	Oliver Springs	Kington St	Fibreglass Reinforc...	Light High...	Sanitary
Upstream MH	Total Length	Year Laid	Shape	Location Details	
A2-4	252.6		Circular		
DS Manhole	Length surveyed	Year Renewed	Height	Width	Pipe Joint...
A2-3	252.6		8	8	N/A



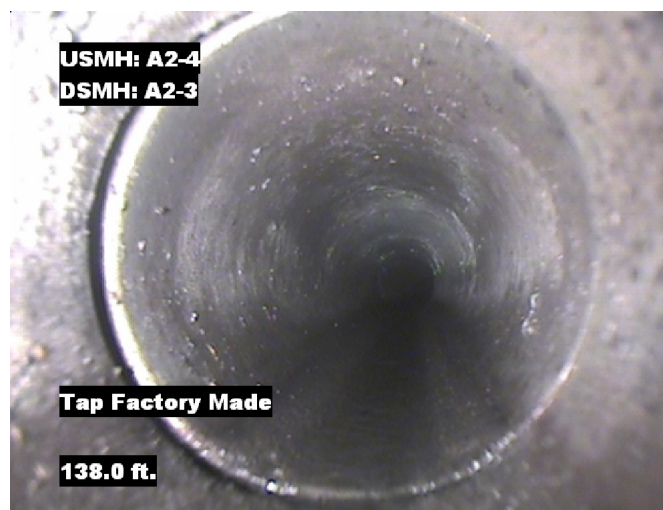
Distance: 44.9 ft. Grade: 0  
Condition: Tap Factory Made  
Remarks: N/A



Distance: 71.5 ft. Grade: 0  
Condition: Tap Factory Made  
Remarks: N/A



Distance: 75.5 ft. Grade: 0  
Condition: Tap Factory Made  
Remarks: N/A

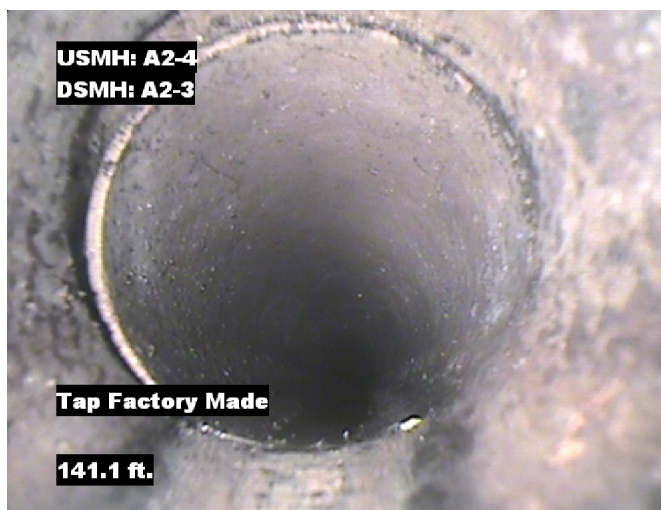


Distance: 138.0 ft. Grade: 0  
Condition: Tap Factory Made  
Remarks: N/A

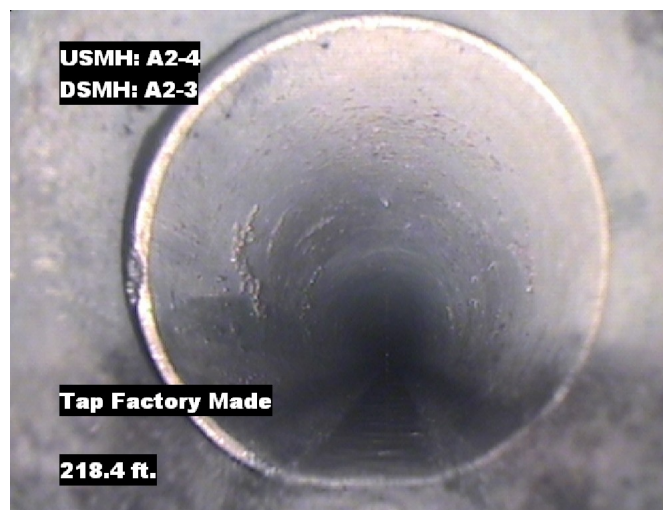


## Image Report 4/Page

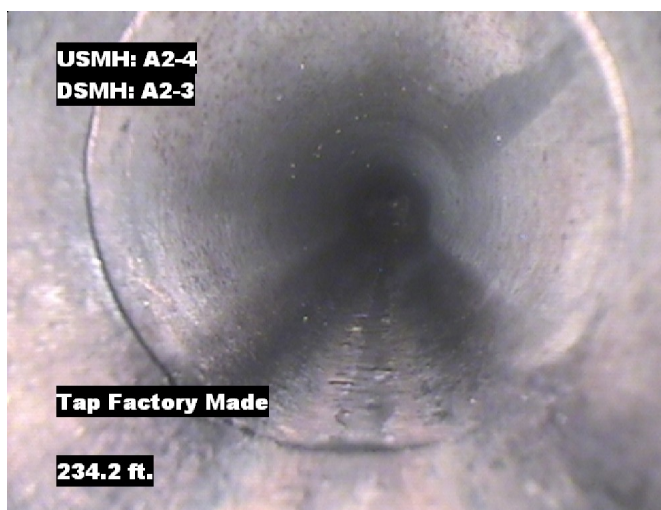
Pipe Segment Refere...	City	Street	Material	Location C...	Sewer Use
<b>A2-4_A2-3</b>	<b>Oliver Springs</b>	<b>Kington St</b>	<b>Fibreglass Reinforc...</b>	<b>Light High...</b>	<b>Sanitary</b>
<b>Upstream MH</b>	Total Length	Year Laid	<b>Shape</b>	Location Details	
<b>A2-4</b>	<b>252.6</b>		<b>Circular</b>		
<b>DS Manhole</b>	<b>Length surveyed</b>	Year Renewed	<b>Height</b>	Width	Pipe Joint...
<b>A2-3</b>	<b>252.6</b>		<b>8</b>	<b>8</b>	<b>N/A</b>



Distance: 141.1 ft. Grade: 0  
Condition: Tap Factory Made  
Remarks: N/A



Distance: 218.4 ft. Grade: 0  
Condition: Tap Factory Made  
Remarks: N/A



Distance: 234.2 ft. Grade: 0  
Condition: Tap Factory Made  
Remarks: N/A

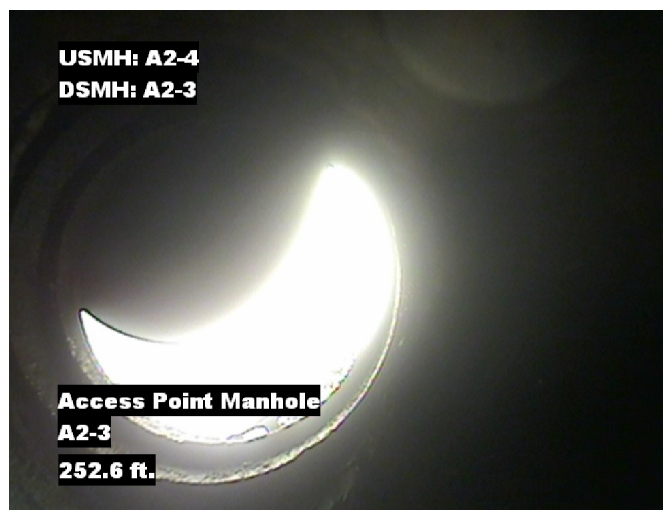


Distance: 249.3 ft. Grade: 0  
Condition: Water Level  
Remarks: N/A



## Image Report 4/Page

Pipe Segment Refere...	City	Street	Material	Location C...	Sewer Use
<b>A2-4_A2-3</b>	<b>Oliver Springs</b>	<b>Kington St</b>	<b>Fibreglass Reinforc...</b>	<b>Light High...</b>	<b>Sanitary</b>
Upstream MH	Total Length	Year Laid	Shape	Location Details	
<b>A2-4</b>	<b>252.6</b>		<b>Circular</b>		
DS Manhole	Length surveyed	Year Renewed	Height	Width	Pipe Joint...
<b>A2-3</b>	<b>252.6</b>		<b>8</b>	<b>8</b>	<b>N/A</b>



Distance: 252.6 ft. Grade: 0  
Condition: Access Point Manhole  
Remarks: A2-3



## PACP Conditions

Pipe Segment Refere... <b>A2-4_A2-3</b>	City <b>Oliver Springs</b>	Street <b>Kington St</b>	Material <b>Fibreglass Reinforc...</b>	Location C... <b>Light High...</b>	Sewer Use <b>Sanitary</b>
Upstream MH <b>A2-4</b>	Total Length <b>252.6</b>	Year Laid	Shape <b>Circular</b>	Location Details	
DS Manhole <b>A2-3</b>	Length surveyed <b>252.6</b>	Year Renewed	Height <b>8</b>	Width <b>8</b>	Pipe Joint... <b>N/A</b>
SPR <b>N/A</b>	MPR <b>N/A</b>	PO Number <b>4397-03</b>		Customer <b>GRW</b>	
SPRI <b>N/A</b>	MPRI <b>N/A</b>	Work Order <b>4397-02</b>		Purpose <b>Pre-Rehabilitation Survey</b>	
QSR <b>N/A</b>	QMR <b>N/A</b>	Direction <b>Downstream</b>		Date <b>20150818</b>	
OPR <b>N/A</b>	Surveyed By <b>Charlie Gordon</b>	Pre-Cleaning <b>Jetting</b>		Media label	
OPRI <b>N/A</b>	Certificate Number <b>U-615-07000491</b>	Time <b>09:51</b>		Weather <b>Light Rain</b>	
Date Cleaned <b>20150818</b>			End Time <b>10:16</b>		Additional Info

			Structural Ratings			O & M Ratings			Combined Ratings		
			Grade Rating	No. Occur.	Rating	Grade Rating	No. Occur.	Rating	Grade Rating	No. Occur.	Rating
Normal Defects											
			1	0	0	1	0	0	1	0	0
			2	0	0	2	0	0	2	0	0
			3	0	0	3	0	0	3	0	0
			4	0	0	4	0	0	4	0	0
			5	0	0	5	0	0	5	0	0
Continuous Defects											
Code	ID	Length									
			Subtotals	0		Subtotals	0		Subtotals	0	
SUMMARY			Pipe Rating	0		Pipe Rating	0		Overall Pipe Rating	0	
			Structural Index	0		O&M Index	0		Overall Index	0	
			Str. Quick Rating	0000		O&M Quick Rating	0000		Ovrl. Quick Rating	0000	