



## Defect Listing

Pipe Segment Refere... <b>A16-2_A16-1</b>	City <b>Oliver Springs</b>	Street <b>Kington St</b>	Material <b>Fibreglass Reinforc...</b>	Location C... <b>Light High...</b>	Sewer Use <b>Sanitary</b>
Upstream MH <b>A16-2</b>	Total Length <b>361.5</b>	Year Laid	Shape <b>Circular</b>	Location Details	
DS Manhole <b>A16-1</b>	Length surveyed <b>361.5</b>	Year Renewed	Height <b>8</b>	Width <b>8</b>	Pipe Joint... <b>N/A</b>

SPR <b>N/A</b>	MPR <b>N/A</b>	PO Number <b>4397-03</b>	Customer <b>GRW</b>
SPRI <b>N/A</b>	MPRI <b>N/A</b>	Work Order <b>4397-02</b>	Purpose <b>Pre-Rehabilitation Survey</b>
QSR <b>N/A</b>	QMR <b>N/A</b>		
OPR <b>N/A</b>	Surveyed By <b>Barry Rogers</b>	Direction <b>Downstream</b>	Date <b>20150813</b>
OPRI <b>N/A</b>	Certificate Number <b>U-1012-16405</b>	Pre-Cleaning <b>Jetting</b>	Time <b>15:08</b>
	Date Cleaned <b>20150813</b>	End Time <b>15:29</b>	Weather <b>Very Dry</b>
			Media label
			Additional Info

Distance	Condition	Cont. Dfct.	Values			Joint	Clock Position		Grade
			1st	2nd	%		At/From	To	
0.0 ft.	Access Point Manhole				0	<input type="checkbox"/>			
Remarks: A16-2									
0.0 ft.	Water Level				5	<input type="checkbox"/>			
6.0 ft.	Tap Factory Made		6		0	<input type="checkbox"/>	9		
21.0 ft.	Tap Factory Made		6		0	<input type="checkbox"/>	12		
52.1 ft.	Tap Factory Made		6		0	<input type="checkbox"/>	9		
131.4 ft.	Tap Factory Made		6		0	<input type="checkbox"/>	9		
147.2 ft.	Tap Factory Made		6		0	<input type="checkbox"/>	2		
359.8 ft.	Water Level				5	<input type="checkbox"/>			
361.5 ft.	Access Point Manhole				0	<input type="checkbox"/>			
Remarks: A16-1									



## Image Report 4/Page

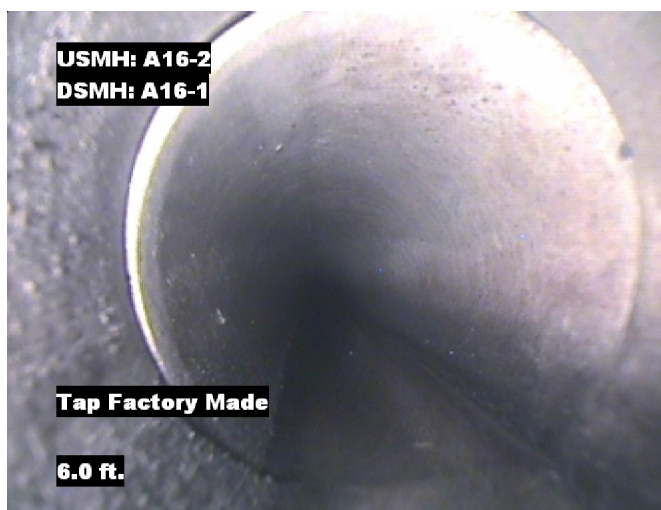
Pipe Segment Refere...	City	Street	Material	Location C...	Sewer Use
A16-2 A16-1	Oliver Springs	Kington St	Fibreglass Reinforc...	Light High...	Sanitary
Upstream MH A16-2	Total Length 361.5	Year Laid	Shape Circular	Location Details	
DS Manhole A16-1	Length surveyed 361.5	Year Renewed	Height 8	Width 8	Pipe Joint... N/A



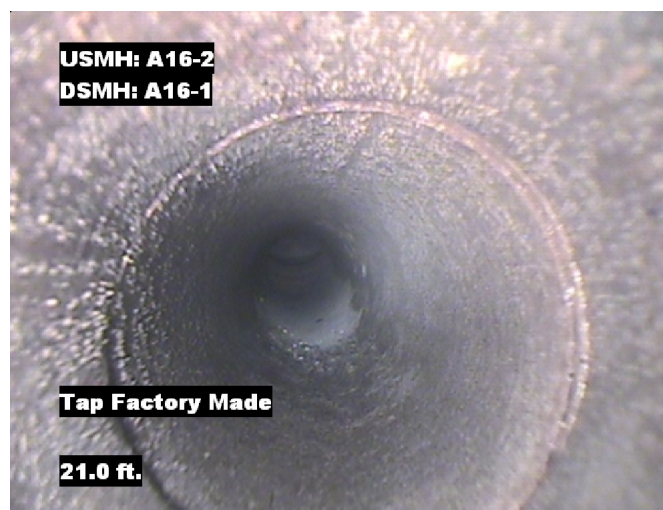
Distance: 0.0 ft. Grade: 0  
Condition: Access Point Manhole  
Remarks: A16-2



Distance: 0.0 ft. Grade: 0  
Condition: Water Level  
Remarks: N/A



Distance: 6.0 ft. Grade: 0  
Condition: Tap Factory Made  
Remarks: N/A

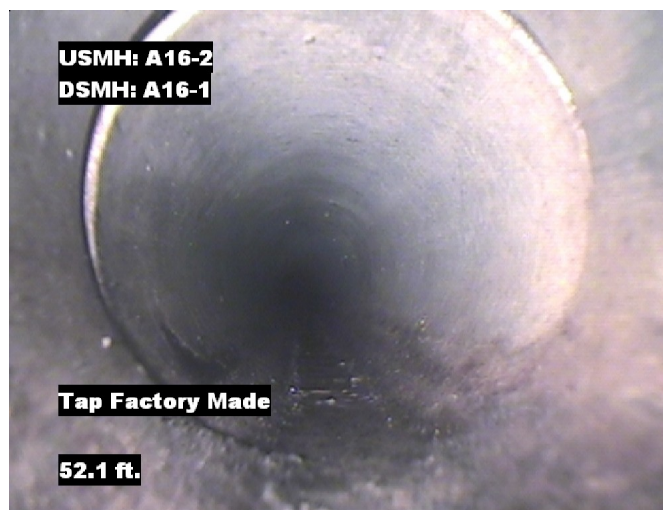


Distance: 21.0 ft. Grade: 0  
Condition: Tap Factory Made  
Remarks: N/A

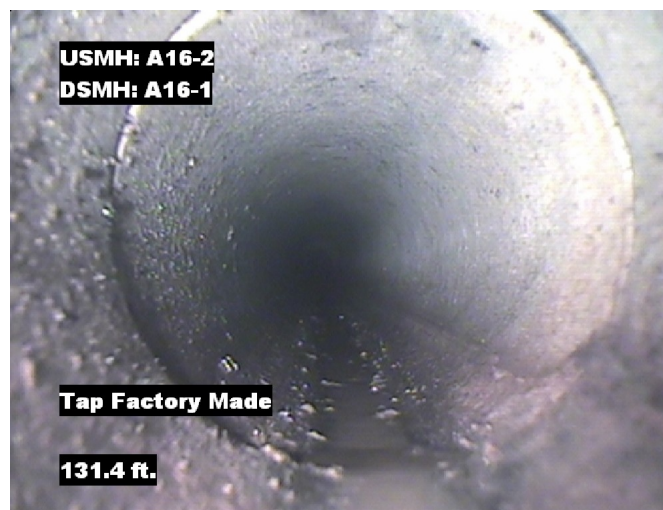


## Image Report 4/Page

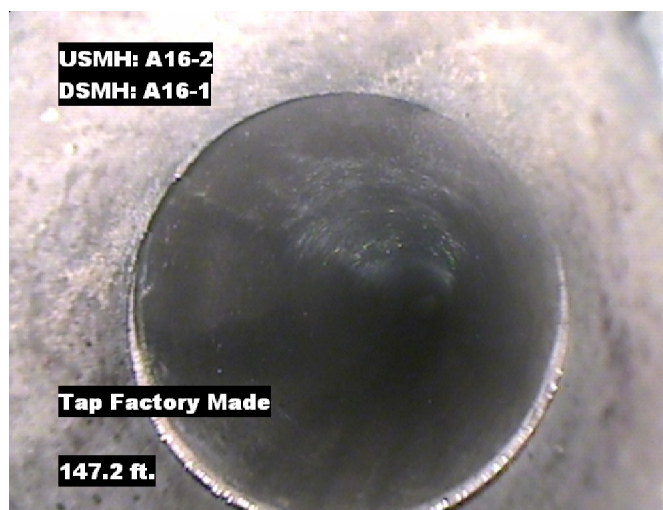
Pipe Segment Refere...	City	Street	Material	Location C...	Sewer Use
A16-2_A16-1	Oliver Springs	Kington St	Fibreglass Reinforc...	Light High...	Sanitary
Upstream MH	Total Length	Year Laid	Shape	Location Details	
A16-2	361.5		Circular		
DS Manhole	Length surveyed	Year Renewed	Height	Width	Pipe Joint...
A16-1	361.5		8	8	N/A



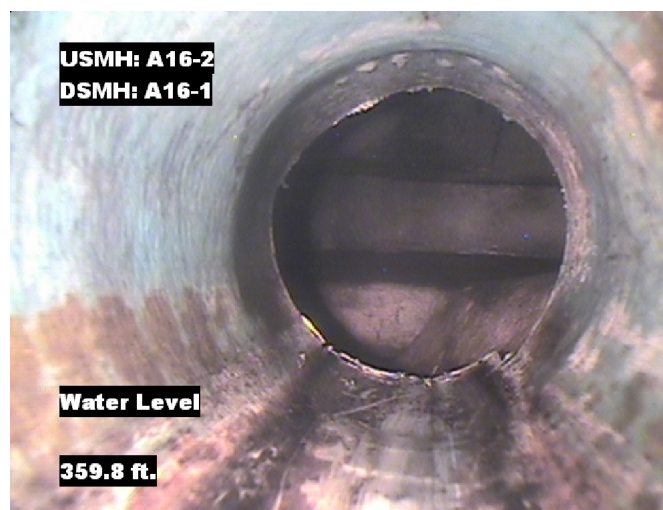
Distance: 52.1 ft. Grade: 0  
Condition: Tap Factory Made  
Remarks: N/A



Distance: 131.4 ft. Grade: 0  
Condition: Tap Factory Made  
Remarks: N/A



Distance: 147.2 ft. Grade: 0  
Condition: Tap Factory Made  
Remarks: N/A



Distance: 359.8 ft. Grade: 0  
Condition: Water Level  
Remarks: N/A





## Image Report 4/Page

Pipe Segment Refere... <b>A16-2_A16-1</b>	<b>City</b> <b>Oliver Springs</b>	<b>Street</b> <b>Kington St</b>	<b>Material</b> <b>Fibreglass Reinforc...</b>		<b>Location C...</b> <b>Light High...</b>	<b>Sewer Use</b> <b>Sanitary</b>
<b>Upstream MH</b> <b>A16-2</b>	Total Length <b>361.5</b>	Year Laid	<b>Shape</b> <b>Circular</b>		Location Details	
<b>DS Manhole</b> <b>A16-1</b>	<b>Length surveyed</b> <b>361.5</b>	Year Renewed	<b>Height</b> <b>8</b>	Width <b>8</b>	Pipe Joint...	<b>N/A</b>



Distance: 361.5 ft.      Grade: 0  
Condition: Access Point Manhole  
Remarks: A16-1



## PACP Conditions

Pipe Segment Refere... <b>A16-2_A16-1</b>	City <b>Oliver Springs</b>	Street <b>Kington St</b>	Material <b>Fibreglass Reinforc...</b>	Location C... <b>Light High...</b>	Sewer Use <b>Sanitary</b>
Upstream MH <b>A16-2</b>	Total Length <b>361.5</b>	Year Laid	Shape <b>Circular</b>	Location Details	
DS Manhole <b>A16-1</b>	Length surveyed <b>361.5</b>	Year Renewed	Height <b>8</b>	Width <b>8</b>	Pipe Joint... <b>N/A</b>
SPR <b>N/A</b>	MPR <b>N/A</b>	PO Number <b>4397-03</b>		Customer <b>GRW</b>	
SPRI <b>N/A</b>	MPRI <b>N/A</b>	Work Order <b>4397-02</b>		Purpose <b>Pre-Rehabilitation Survey</b>	
QSR <b>N/A</b>	QMR <b>N/A</b>	Direction <b>Downstream</b>		Date <b>20150813</b>	
OPR <b>N/A</b>	Surveyed By <b>Barry Rogers</b>	Pre-Cleaning <b>Jetting</b>		Media label	
OPRI <b>N/A</b>	Certificate Number <b>U-1012-16405</b>	Time <b>15:08</b>		Weather <b>Very Dry</b>	
Date Cleaned <b>20150813</b>			End Time <b>15:29</b>		Additional Info

			Structural Ratings			O & M Ratings			Combined Ratings		
			Grade Rating	No. Occur.	Rating	Grade Rating	No. Occur.	Rating	Grade Rating	No. Occur.	Rating
Normal Defects											
			1	0	0	1	0	0	1	0	0
			2	0	0	2	0	0	2	0	0
			3	0	0	3	0	0	3	0	0
			4	0	0	4	0	0	4	0	0
			5	0	0	5	0	0	5	0	0
Continuous Defects											
Code	ID	Length									
			Subtotals	0		Subtotals	0		Subtotals	0	
SUMMARY			Pipe Rating	0		Pipe Rating	0		Overall Pipe Rating	0	
			Structural Index	0		O&M Index	0		Overall Index	0	
			Str. Quick Rating	0000		O&M Quick Rating	0000		Ovrl. Quick Rating	0000	