



## Defect Listing

Pipe Segment Refere... <b>A1-4_A1-3</b>	City <b>Oliver Springs</b>	Street <b>Kington Ave</b>	Material <b>Concrete Pipe (non-...</b>	Location C... <b>Other</b>	Sewer Use <b>Sanitary</b>
Upstream MH <b>A1-4</b>	Total Length <b>273.9</b>	Year Laid	Shape <b>Circular</b>	Location Details <b>football field</b>	
DS Manhole <b>A1-3</b>	Length surveyed <b>273.9</b>	Year Renewed	Height <b>8</b>	Width <b>8</b>	Pipe Joint... <b>4</b>

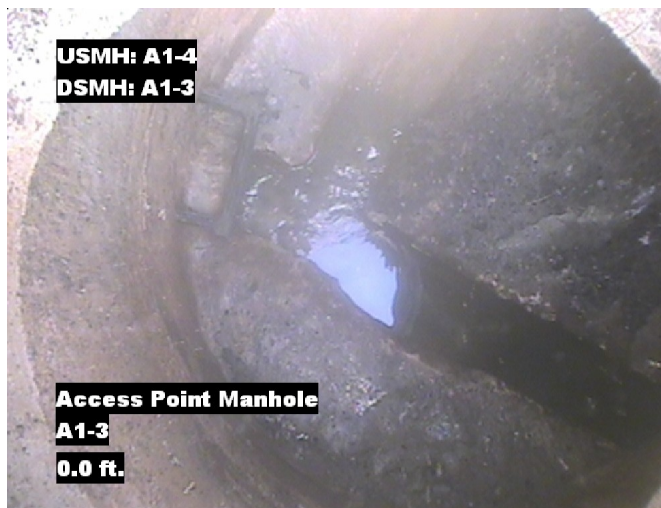
SPR <b>N/A</b>	MPR <b>21</b>	PO Number <b>4397-03</b>		Customer <b>GRW</b>	
SPRI <b>N/A</b>	MPRI <b>2.1</b>	Work Order <b>4397-02</b>		Purpose <b>Pre-Rehabilitation Survey</b>	
QSR <b>N/A</b>	QMR <b>3129</b>				
OPR <b>21</b>	Surveyed By <b>Charlie Gordon</b>	Direction <b>Upstream</b>	Date <b>20150824</b>	Media label	
OPRI <b>2.1</b>	Certificate Number <b>U-615-07000491</b>	Pre-Cleaning <b>Jetting</b>	Time <b>09:13</b>	Weather <b>Dry</b>	
Date Cleaned <b>20150824</b>			End Time <b>09:32</b>	Additional Info	

Distance	Condition	Cont. Dfct.	Values			Joint	Clock Position		Grade
			1st	2nd	%		At/From	To	
0.0 ft.	Access Point Manhole				0	<input type="checkbox"/>			
Remarks: A1-3									
0.0 ft.	Water Level				10	<input type="checkbox"/>			
11.5 ft.	Water Level Sag				15	<input type="checkbox"/>			2
46.1 ft.	Water Level Sag				15	<input type="checkbox"/>			2
70.0 ft.	Water Level Sag				15	<input type="checkbox"/>			2
73.1 ft.	Water Level Sag				40	<input type="checkbox"/>			3
114.1 ft.	Water Level Sag				15	<input type="checkbox"/>			2
142.7 ft.	Water Level Sag				15	<input type="checkbox"/>			2
174.1 ft.	Water Level Sag				15	<input type="checkbox"/>			2
200.5 ft.	Water Level Sag				15	<input type="checkbox"/>			2
244.1 ft.	Water Level Sag				15	<input type="checkbox"/>			2
261.8 ft.	Water Level Sag				15	<input type="checkbox"/>			2
261.8 ft.	Material Change				0	<input type="checkbox"/>			
Remarks: CP TO PVC									
266.8 ft.	Material Change				0	<input type="checkbox"/>			
Remarks: PVC TO CP									
273.3 ft.	Water Level				10	<input type="checkbox"/>			
273.9 ft.	Access Point Manhole				0	<input type="checkbox"/>			
Remarks: A1-4									

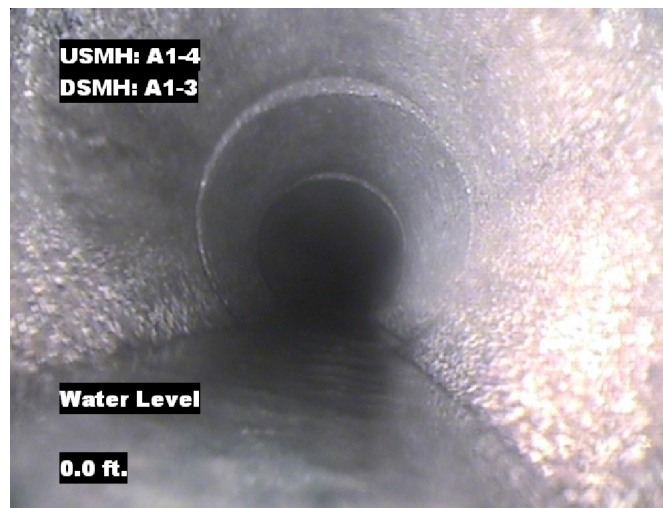


## Image Report 4/Page

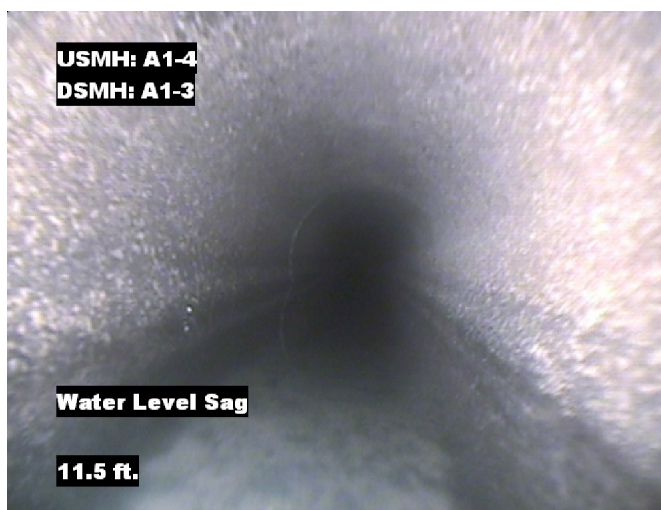
Pipe Segment Refere...	City	Street	Material	Location C...	Sewer Use
A1-4_A1-3	Oliver Springs	Kington Ave	Concrete Pipe (non-...	Other	Sanitary
Upstream MH	Total Length	Year Laid	Shape	Location Details	
A1-4	273.9		Circular	football field	
DS Manhole	Length surveyed	Year Renewed	Height	Width	Pipe Joint...
A1-3	273.9		8	8	4



Distance: 0.0 ft. Grade: 0  
Condition: Access Point Manhole  
Remarks: A1-3



Distance: 0.0 ft. Grade: 0  
Condition: Water Level  
Remarks: N/A



Distance: 11.5 ft. Grade: 2  
Condition: Water Level Sag  
Remarks: N/A

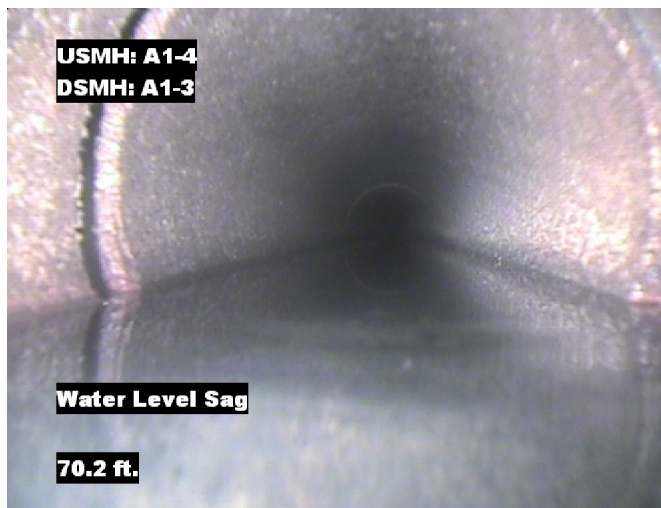


Distance: 46.1 ft. Grade: 2  
Condition: Water Level Sag  
Remarks: N/A

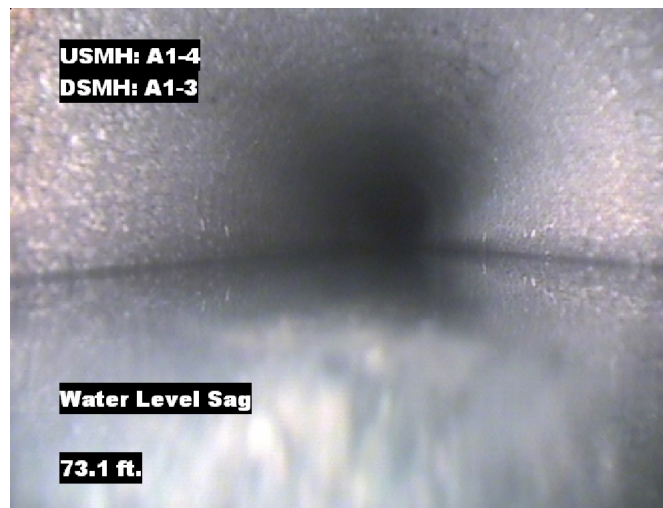


## Image Report 4/Page

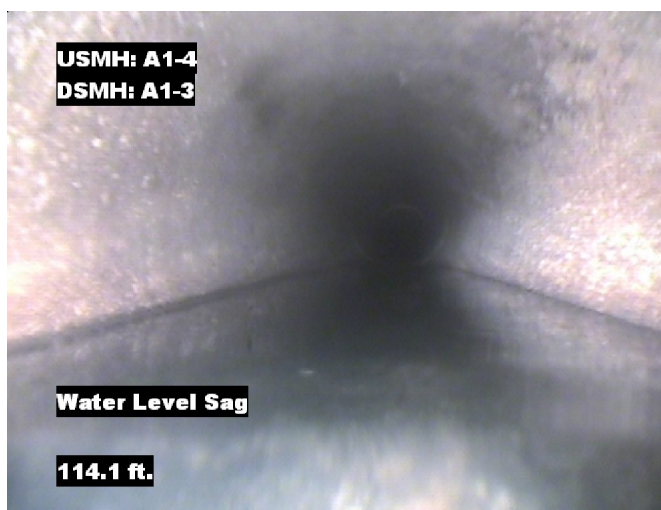
Pipe Segment Refere...	City	Street	Material	Location C...	Sewer Use
<b>A1-4_A1-3</b>	<b>Oliver Springs</b>	<b>Kington Ave</b>	<b>Concrete Pipe (non-...</b>	<b>Other</b>	<b>Sanitary</b>
<b>Upstream MH</b>	Total Length	Year Laid	<b>Shape</b>	Location Details	
<b>A1-4</b>	<b>273.9</b>		<b>Circular</b>	<b>football field</b>	
<b>DS Manhole</b>	<b>Length surveyed</b>	Year Renewed	<b>Height</b>	Width	Pipe Joint...
<b>A1-3</b>	<b>273.9</b>		<b>8</b>	<b>8</b>	<b>4</b>



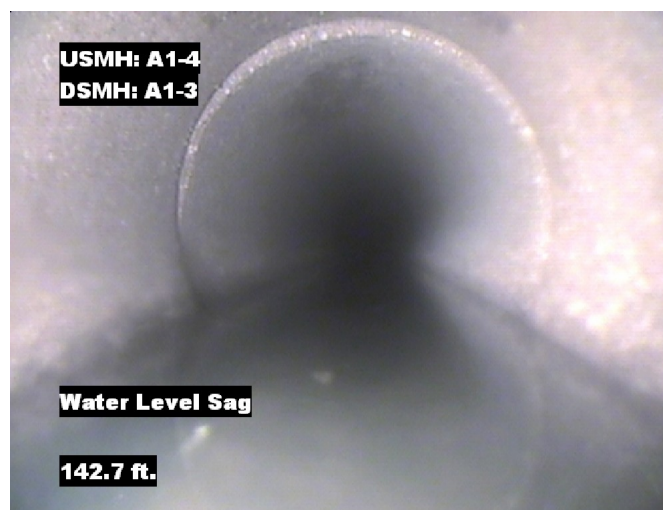
Distance: 70.0 ft. Grade: 2  
Condition: Water Level Sag  
Remarks: N/A



Distance: 73.1 ft. Grade: 3  
Condition: Water Level Sag  
Remarks: N/A



Distance: 114.1 ft. Grade: 2  
Condition: Water Level Sag  
Remarks: N/A



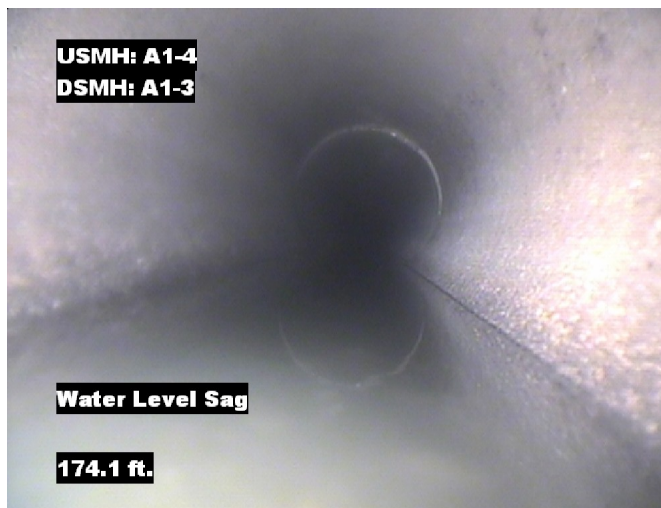
Distance: 142.7 ft. Grade: 2  
Condition: Water Level Sag  
Remarks: N/A



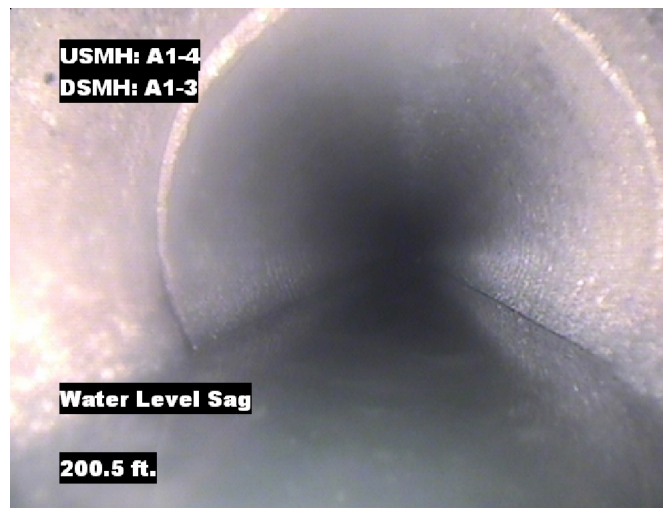


## Image Report 4/Page

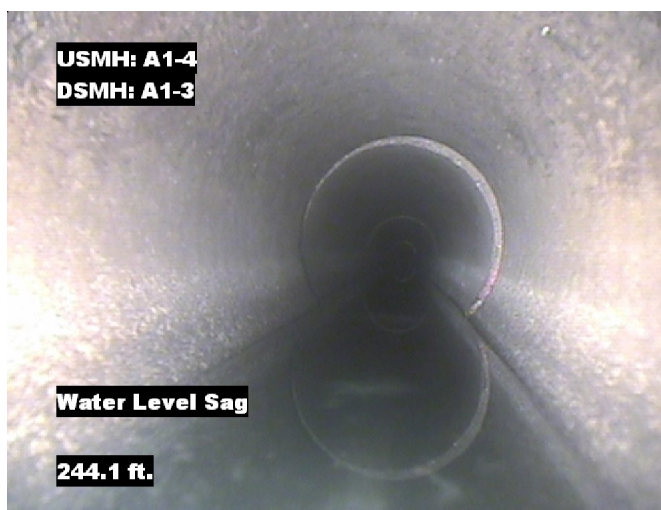
Pipe Segment Refere...	City	Street	Material	Location C...	Sewer Use
<b>A1-4_A1-3</b>	<b>Oliver Springs</b>	<b>Kington Ave</b>	<b>Concrete Pipe (non-...</b>	<b>Other</b>	<b>Sanitary</b>
<b>Upstream MH</b>	Total Length	Year Laid	<b>Shape</b>	Location Details	
<b>A1-4</b>	<b>273.9</b>		<b>Circular</b>	<b>football field</b>	
<b>DS Manhole</b>	<b>Length surveyed</b>	Year Renewed	<b>Height</b>	Width	Pipe Joint...
<b>A1-3</b>	<b>273.9</b>		<b>8</b>	<b>8</b>	<b>4</b>



Distance: 174.1 ft. Grade: 2  
Condition: Water Level Sag  
Remarks: N/A



Distance: 200.5 ft. Grade: 2  
Condition: Water Level Sag  
Remarks: N/A



Distance: 244.1 ft. Grade: 2  
Condition: Water Level Sag  
Remarks: N/A

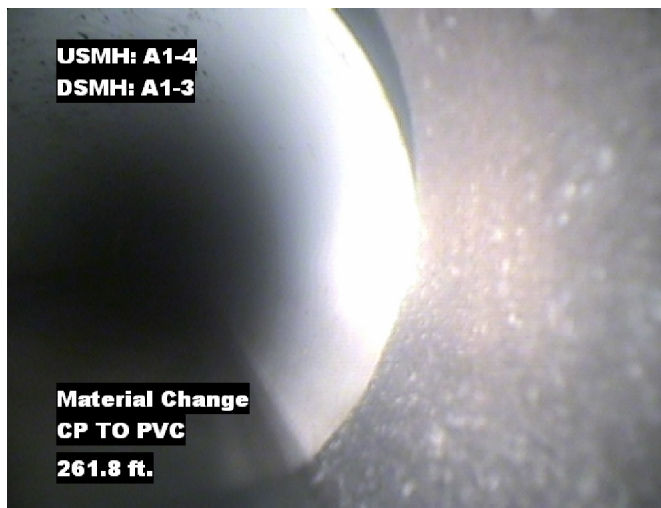


Distance: 261.8 ft. Grade: 2  
Condition: Water Level Sag  
Remarks: N/A

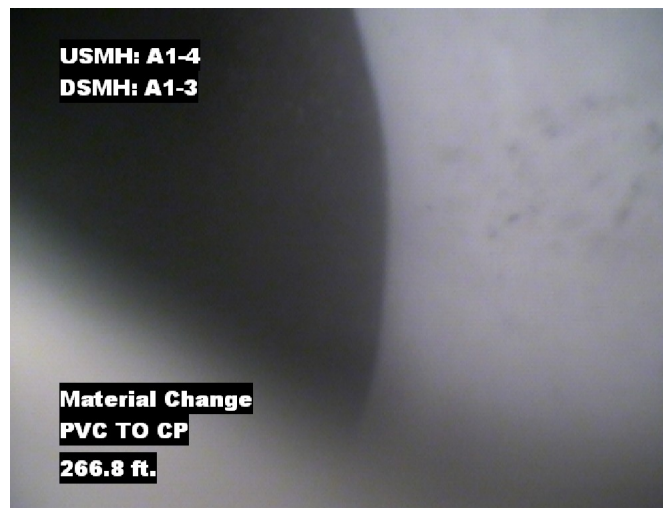


## Image Report 4/Page

Pipe Segment Refere... <b>A1-4_A1-3</b>	<b>City</b> <b>Oliver Springs</b>	<b>Street</b> <b>Kington Ave</b>	<b>Material</b> <b>Concrete Pipe (non-...</b>		<b>Location C...</b> <b>Other</b>	<b>Sewer Use</b> <b>Sanitary</b>
<b>Upstream MH</b> <b>A1-4</b>	Total Length <b>273.9</b>	Year Laid	<b>Shape</b> <b>Circular</b>		Location Details <b>football field</b>	
<b>DS Manhole</b> <b>A1-3</b>	<b>Length surveyed</b> <b>273.9</b>	Year Renewed	<b>Height</b> <b>8</b>	Width <b>8</b>	Pipe Joint... <b>4</b>	



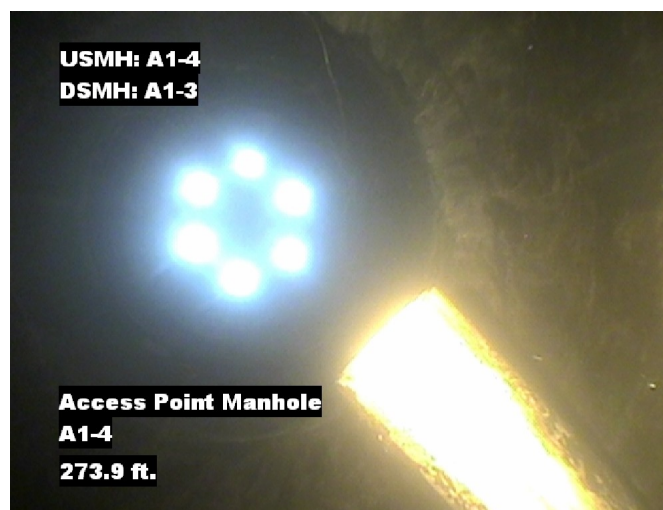
Distance: 261.8 ft. Grade: 0  
Condition: Material Change  
Remarks: CP TO PVC



Distance: 266.8 ft. Grade: 0  
Condition: Material Change  
Remarks: PVC TO CP



Distance: 273.3 ft. Grade: 0  
Condition: Water Level  
Remarks: N/A



Distance: 273.9 ft. Grade: 0  
Condition: Access Point Manhole  
Remarks: A1-4



Pipe Segment Refere... A1-4_A1-3	City Oliver Springs	Street Kington Ave	Material Concrete Pipe (non-...		Location C... Other	Sewer Use Sanitary
Upstream MH A1-4	Total Length 273.9	Year Laid	Shape Circular		Location Details football field	
DS Manhole A1-3	Length surveyed 273.9	Year Renewed	Height 8	Width 8	Pipe Joint... 4	
SPR N/A	MPR 21	PO Number 4397-03		Customer GRW		
SPRI N/A	MPRI 2.1	Work Order 4397-02		Purpose		
QSR N/A	QMR 3129			Pre-Rehabilitation Survey		
OPR 21	Surveyed By Charlie Gordon	Direction Upstream	Date 20150824		Media label	
OPRI 2.1	Certificate Number U-615-07000491	Pre-Cleaning Jetting	Time 09:13		Weather Dry	
Date Cleaned 20150824			End Time 09:32		Additional Info	

Page #: 6