



## Defect Listing

Pipe Segment Refere...	City	Street	Material	Location C...	Sewer Use
<b>A1-3_A1-2</b>	<b>Oliver springs</b>	<b>Kington ave</b>	<b>PolyVinyl Chloride</b>	<b>Yard</b>	<b>Sanitary</b>
Upstream MH	Total Length	Year Laid	Shape	Location Details	
<b>A1-3</b>	<b>254.1</b>		<b>Circular</b>		
DS Manhole	Length surveyed	Year Renewed	Height	Width	Pipe Joint...
<b>A1-2</b>	<b>254.1</b>		<b>8</b>	<b>8</b>	<b>13</b>

SPR	2	MPR	18	PO Number	Customer
SPRI	2	MPRI	2	<b>4397-03</b>	<b>GRW</b>
QSR	2100	QMR	2900	Work Order	Purpose
				<b>4397-02</b>	<b>Pre-Rehabilitation Survey</b>
OPR	20	Surveyed By	Direction	Date	Media label
OPRI	2	<b>Charlie Gordon</b>	<b>Upstream</b>	<b>20150824</b>	
		Certificate Number	Pre-Cleaning	Time	Weather
		<b>U-615-07000491</b>	<b>Jetting</b>	<b>10:18</b>	<b>Dry</b>
		Date Cleaned	End Time	Additional Info	
		<b>20150824</b>	<b>10:37</b>		

Distance	Condition	Cont. Dfct.	Values			Joint	Clock Position		Grade
			1st	2nd	%		At/From	To	
0.0 ft.	Access Point Manhole				0	<input type="checkbox"/>			
<b>Remarks:</b> A1-2									
0.0 ft.	Water Level				5	<input type="checkbox"/>			
43.7 ft.	Water Level Sag				15	<input type="checkbox"/>			2
78.6 ft.	Buckling Dimpling				0	<input type="checkbox"/>	1		
86.0 ft.	Water Level Sag				10	<input type="checkbox"/>			2
156.4 ft.	Water Level Sag				15	<input type="checkbox"/>			2
179.5 ft.	Water Level Sag				10	<input type="checkbox"/>			2
197.2 ft.	Water Level Sag	S01			20	<input type="checkbox"/>			2
222.2 ft.	Water Level Sag	F01			20	<input type="checkbox"/>			2
227.7 ft.	Tap Factory Made Active		6		0	<input type="checkbox"/>	3		
254.1 ft.	Shape or Size Change		8	6	0	<input type="checkbox"/>			
254.1 ft.	Joint Offset Large				0	<input type="checkbox"/>			2
254.1 ft.	Material Change				0	<input type="checkbox"/>			
<b>Remarks:</b> PVC TO CP									
254.1 ft.	Survey Abandoned				0	<input type="checkbox"/>			
<b>Remarks:</b> CANNOT PASS OF SET JOINT									

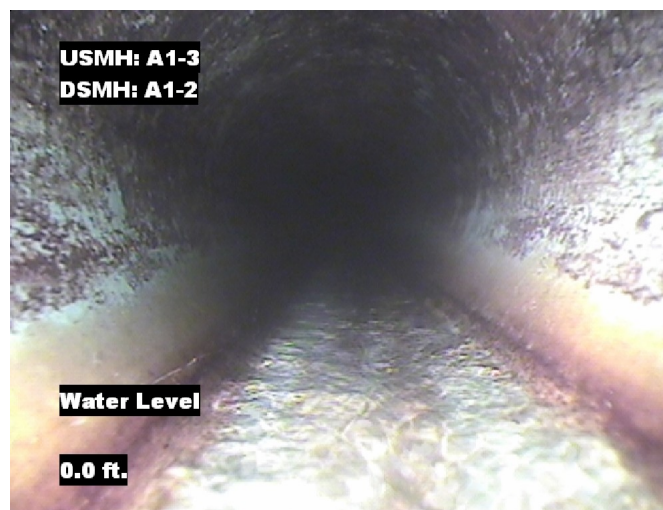


## Image Report 4/Page

Pipe Segment Refere...	City	Street	Material	Location C...	Sewer Use
A1-3_A1-2	Oliver springs	Kington ave	PolyVinyl Chloride	Yard	Sanitary
Upstream MH	Total Length	Year Laid	Shape	Location Details	
A1-3	254.1		Circular		
DS Manhole	Length surveyed	Year Renewed	Height	Width	Pipe Joint...
A1-2	254.1		8	8	13



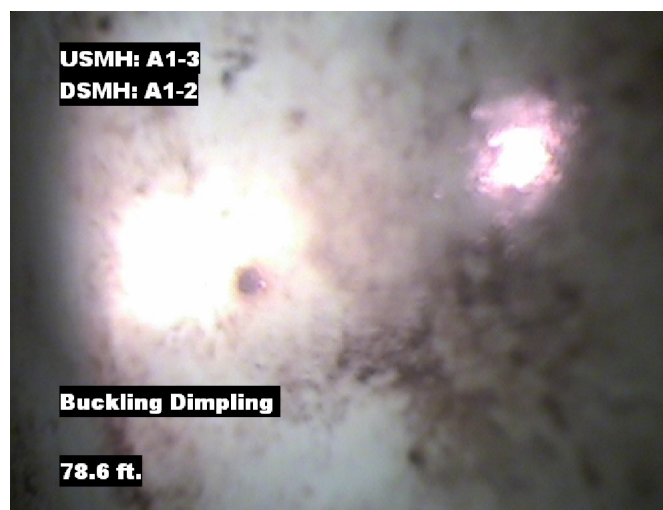
Distance: 0.0 ft. Grade: 0  
Condition: Access Point Manhole  
Remarks: A1-2



Distance: 0.0 ft. Grade: 0  
Condition: Water Level  
Remarks: N/A



Distance: 43.7 ft. Grade: 2  
Condition: Water Level Sag  
Remarks: N/A



Distance: 78.6 ft. Grade: 0  
Condition: Buckling Dimpling  
Remarks: N/A



## Image Report 4/Page

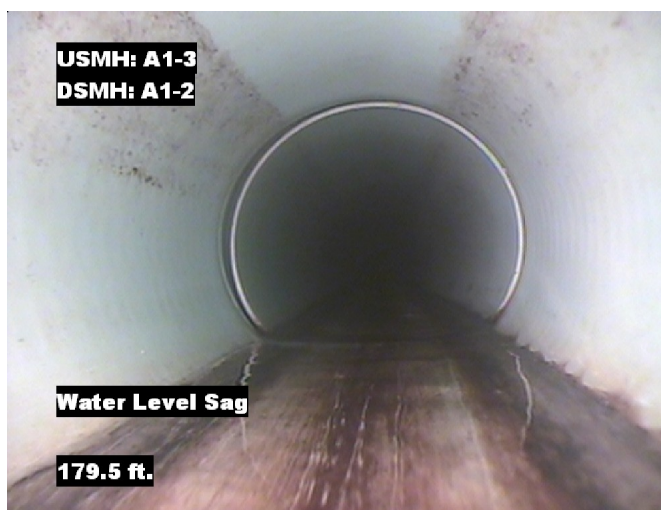
Pipe Segment Refere...	City	Street	Material	Location C...	Sewer Use
<b>A1-3_A1-2</b>	<b>Oliver springs</b>	<b>Kington ave</b>	<b>PolyVinyl Chloride</b>	<b>Yard</b>	<b>Sanitary</b>
<b>Upstream MH</b>	Total Length	Year Laid	<b>Shape</b>	Location Details	
<b>A1-3</b>	<b>254.1</b>		<b>Circular</b>		
<b>DS Manhole</b>	<b>Length surveyed</b>	Year Renewed	<b>Height</b>	Width	Pipe Joint...
<b>A1-2</b>	<b>254.1</b>		<b>8</b>	<b>8</b>	<b>13</b>



Distance: 86.0 ft. Grade: 2  
Condition: Water Level Sag  
Remarks: N/A



Distance: 156.4 ft. Grade: 2  
Condition: Water Level Sag  
Remarks: N/A



Distance: 179.5 ft. Grade: 2  
Condition: Water Level Sag  
Remarks: N/A



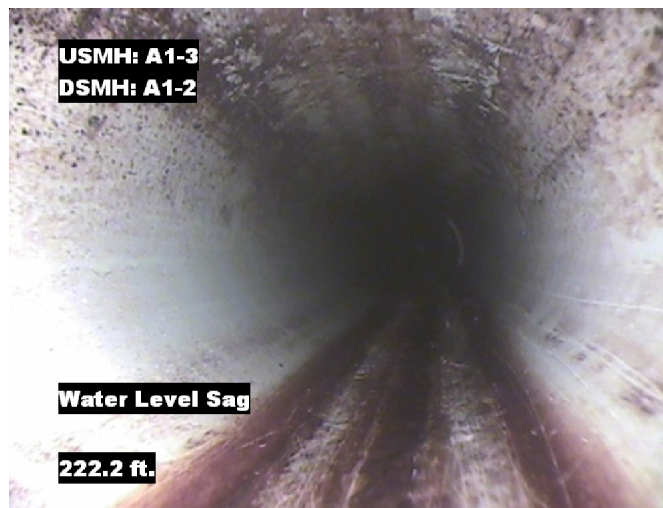
Distance: 197.2 ft. Grade: 2  
Condition: Water Level Sag  
Remarks: N/A





## Image Report 4/Page

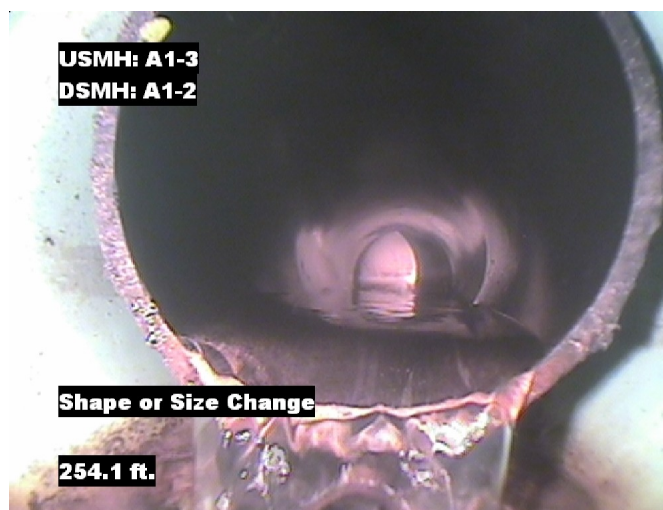
Pipe Segment Refere...	City	Street	Material	Location C...	Sewer Use
<b>A1-3_A1-2</b>	<b>Oliver springs</b>	<b>Kington ave</b>	<b>PolyVinyl Chloride</b>	<b>Yard</b>	<b>Sanitary</b>
<b>Upstream MH</b>	Total Length	Year Laid	<b>Shape</b>	Location Details	
<b>A1-3</b>	<b>254.1</b>		<b>Circular</b>		
<b>DS Manhole</b>	Length surveyed	Year Renewed	<b>Height</b>	Width	Pipe Joint...
<b>A1-2</b>	<b>254.1</b>		<b>8</b>	<b>8</b>	<b>13</b>



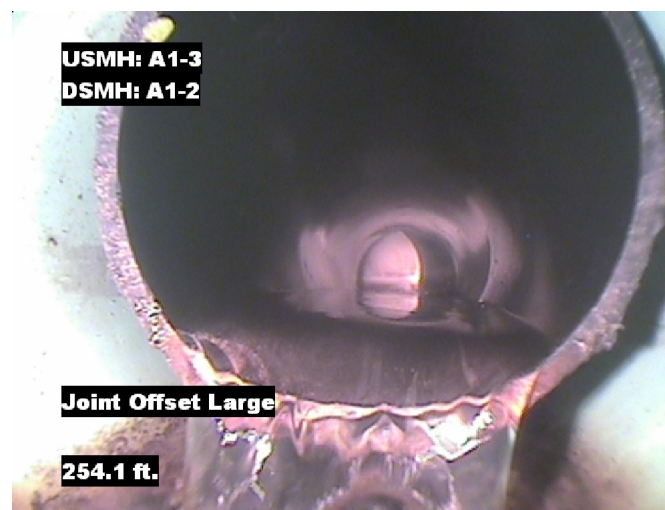
Distance: 222.2 ft. Grade: 2  
Condition: Water Level Sag  
Remarks: N/A



Distance: 227.7 ft. Grade: 0  
Condition: Tap Factory Made Active  
Remarks: N/A



Distance: 254.1 ft. Grade: 0  
Condition: Shape or Size Change  
Remarks: N/A

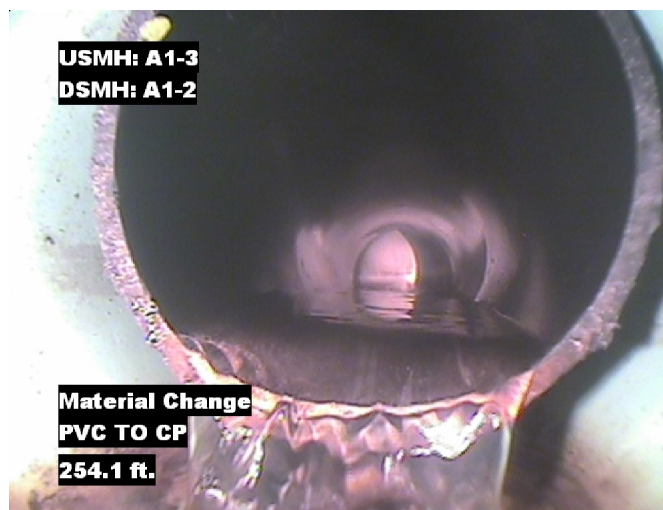


Distance: 254.1 ft. Grade: 2  
Condition: Joint Offset Large  
Remarks: N/A

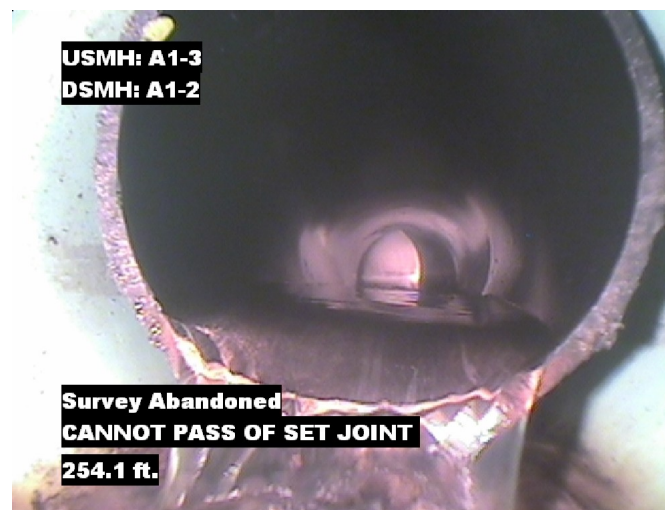


## Image Report 4/Page

Pipe Segment Refere...	City	Street	Material	Location C...	Sewer Use
A1-3_A1-2	Oliver springs	Kington ave	PolyVinyl Chloride	Yard	Sanitary
Upstream MH	Total Length	Year Laid	Shape	Location Details	
A1-3	254.1		Circular		
DS Manhole	Length surveyed	Year Renewed	Height	Width	Pipe Joint...
A1-2	254.1		8	8	13



Distance: 254.1 ft. Grade: 0  
Condition: Material Change  
Remarks: PVC TO CP



Distance: 254.1 ft. Grade: 0  
Condition: Survey Abandoned  
Remarks: CANNOT PASS OF SET JOINT



Pipe Segment Refere... A1-3_A1-2	City Oliver springs	Street Kington ave	Material PolyVinyl Chloride		Location C... Yard	Sewer Use Sanitary
Upstream MH A1-3	Total Length 254.1	Year Laid	Shape Circular		Location Details	
DS Manhole A1-2	Length surveyed 254.1	Year Renewed	Height 8	Width 8	Pipe Joint... 13	
SPR 2	MPR 18	PO Number 4397-03		Customer GRW		
SPRI 2	MPRI 2	Work Order 4397-02		Purpose		
QSR 2100	QMR 2900			Pre-Rehabilitation Survey		
OPR 20	Surveyed By Charlie Gordon	Direction Upstream	Date 20150824		Media label	
OPRI 2	Certificate Number U-615-07000491	Pre-Cleaning Jetting	Time 10:18		Weather Dry	
Date Cleaned 20150824			End Time 10:37		Additional Info	

			Structural Ratings			O & M Ratings			Combined Ratings		
			Grade Rating	No. Occur.	Rating	Grade Rating	No. Occur.	Rating	Grade Rating	No. Occur.	Rating
Normal Defects											
<div>Continuous Defects</div> <div><div>CodeIDLength</div>MWLSF0125.0</div>			1	0	0	1	0	0	1	0	0
			2	1	2	2	4	8	2	5	10
			3	0	0	3	0	0	3	0	0
			4	0	0	4	0	0	4	0	0
			5	0	0	5	0	0	5	0	0
			0	0	0	2	5	10	2	5	10
			Subtotals	1		Subtotals	9		Subtotals	10	
SUMMARY			Pipe Rating Structural Index Str. Quick Rating	2 2.0 2100	Pipe Rating O&M Index O&M Quick Rating	18 2.0 2900	Overall Pipe Rating Overall Index Ovrl. Quick Rating	20 2.0 2A00			