



## Defect Listing

Pipe Segment Refere... <b>A1-2_A1-1</b>	City <b>Oliver Springs</b>	Street <b>Kington Ave</b>	Material <b>Concrete Pipe (non-...</b>	Location C... <b>Yard</b>	Sewer Use <b>Sanitary</b>
Upstream MH <b>A1-2</b>	Total Length <b>22.1</b>	Year Laid	Shape <b>Circular</b>	Location Details	
DS Manhole <b>A1-1</b>	Length surveyed <b>10.2</b>	Year Renewed	Height <b>8</b>	Width <b>8</b>	Pipe Joint... <b>4</b>

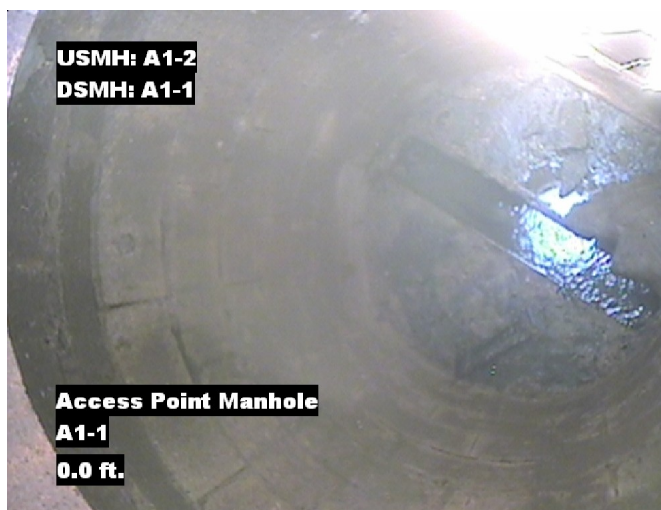
SPR <b>3</b>	MPR <b>4</b>	PO Number <b>4397-03</b>	Customer <b>GRW</b>
SPRI <b>3</b>	MPRI <b>4</b>	Work Order <b>4397-02</b>	Purpose <b>Pre-Rehabilitation Survey</b>
QSR <b>3100</b>	QMR <b>4100</b>		
OPR <b>7</b>	Surveyed By <b>Charlie Gordon</b>	Direction <b>Upstream</b>	Date <b>20150824</b>
OPRI <b>3.5</b>	Certificate Number <b>U-615-07000491</b>	Pre-Cleaning <b>Jetting</b>	Time <b>12:35</b>
	Date Cleaned <b>20150824</b>	End Time <b>12:40</b>	Weather <b>Dry</b>
		Additional Info <b>CAMERA CANNOT PASS ...</b>	

Distance	Condition	Cont. Dfct.	Values			Joint	Clock Position		Grade
			1st	2nd	%		At/From	To	
0.0 ft.	Access Point Manhole				0	<input type="checkbox"/>			
Remarks: A1-1									
0.0 ft.	Water Level				20	<input type="checkbox"/>			
0.0 ft.	Camera Underwater					<input type="checkbox"/>			4
6.1 ft.	Fracture Longitudinal				0	<input type="checkbox"/>	11		3
10.2 ft.	Survey Abandoned				0	<input type="checkbox"/>			
Remarks: CAMERA CANNOT PASS FRACTURED PIPE POSSIBLE BROKEN									

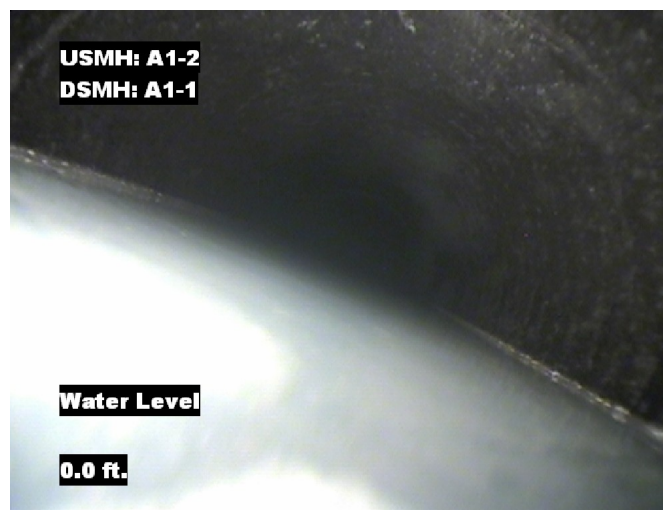


## Image Report 4/Page

Pipe Segment Refere...	City	Street	Material	Location C...	Sewer Use
A1-2_A1-1	Oliver Springs	Kington Ave	Concrete Pipe (non-...	Yard	Sanitary
Upstream MH	Total Length	Year Laid	Shape	Location Details	
A1-2	22.1		Circular		
DS Manhole	Length surveyed	Year Renewed	Height	Width	Pipe Joint...
A1-1	10.2		8	8	4



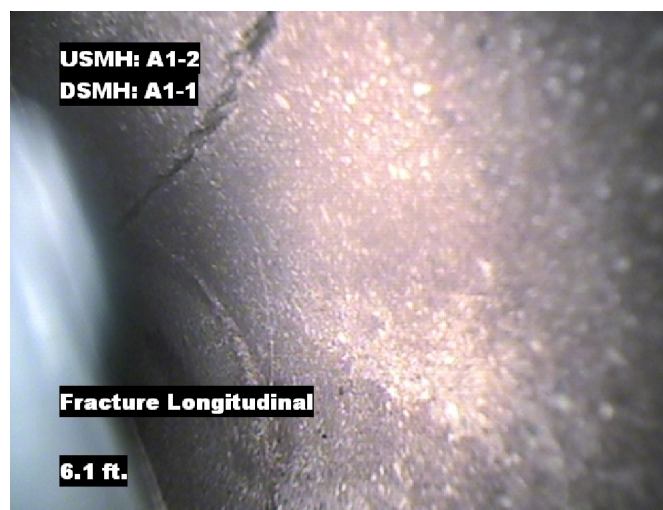
Distance: 0.0 ft. Grade: 0  
Condition: Access Point Manhole  
Remarks: A1-1



Distance: 0.0 ft. Grade: 0  
Condition: Water Level  
Remarks: N/A



Distance: 0.0 ft. Grade: 4  
Condition: Camera Underwater  
Remarks: N/A

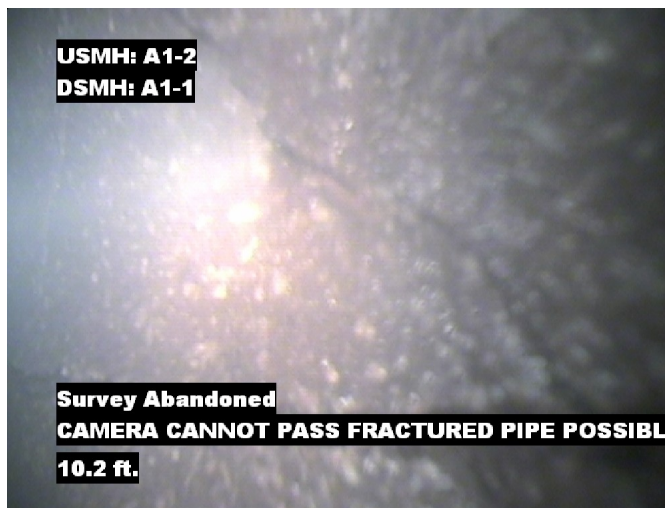


Distance: 6.1 ft. Grade: 3  
Condition: Fracture Longitudinal  
Remarks: N/A



## Image Report 4/Page

Pipe Segment Refere...	City	Street	Material	Location C...	Sewer Use
<b>A1-2_A1-1</b>	<b>Oliver Springs</b>	<b>Kington Ave</b>	<b>Concrete Pipe (non-...</b>	<b>Yard</b>	<b>Sanitary</b>
Upstream MH	Total Length	Year Laid	Shape	Location Details	
<b>A1-2</b>	<b>22.1</b>		<b>Circular</b>		
DS Manhole	Length surveyed	Year Renewed	Height	Width	Pipe Joint...
<b>A1-1</b>	<b>10.2</b>		<b>8</b>	<b>8</b>	<b>4</b>



Distance: 10.2 ft. Grade: 0  
Condition: Survey Abandoned  
Remarks: CAMERA CANNOT PASS FRACTURED  
PIPE POSSIBLE BROKEN



## PACP Conditions

Pipe Segment Refere... <b>A1-2_A1-1</b>	<b>City</b> <b>Oliver Springs</b>	<b>Street</b> <b>Kington Ave</b>	<b>Material</b> <b>Concrete Pipe (non-...</b>	<b>Location C...</b> <b>Yard</b>	<b>Sewer Use</b> <b>Sanitary</b>
<b>Upstream MH</b> <b>A1-2</b>	Total Length <b>22.1</b>	Year Laid	<b>Shape</b> <b>Circular</b>	Location Details	
<b>DS Manhole</b> <b>A1-1</b>	<b>Length surveyed</b> <b>10.2</b>	Year Renewed	<b>Height</b> <b>8</b>	Width <b>8</b>	Pipe Joint... <b>4</b>
SPR <b>3</b>	MPR <b>4</b>	PO Number <b>4397-03</b>		<b>Customer</b> <b>GRW</b>	
SPRI <b>3</b>	MPRI <b>4</b>	Work Order <b>4397-02</b>		Purpose <b>Pre-Rehabilitation Survey</b>	
QSR <b>3100</b>	QMR <b>4100</b>				
OPR <b>7</b>	<b>Surveyed By</b> <b>Charlie Gordon</b>	<b>Direction</b> <b>Upstream</b>	<b>Date</b> <b>20150824</b>	<b>Media label</b>	
OPRI <b>3.5</b>	<b>Certificate Number</b> <b>U-615-07000491</b>	<b>Pre-Cleaning</b> <b>Jetting</b>	Time <b>12:35</b>	<b>Weather</b> <b>Dry</b>	
<b>Date Cleaned</b> <b>20150824</b>			End Time <b>12:40</b>	<b>Additional Info</b> <b>CAMERA CANNOT PASS ...</b>	

Normal Defects			Structural Ratings			O & M Ratings			Combined Ratings		
			Grade Rating	No. Occur.	Rating	Grade Rating	No. Occur.	Rating	Grade Rating	No. Occur.	Rating
Continuous Defects			1	0	0	1	0	0	1	0	0
			2	0	0	2	0	0	2	0	0
			3	1	3	3	0	0	3	1	3
			4	0	0	4	1	4	4	1	4
			5	0	0	5	0	0	5	0	0
Code	ID	Length									