



Defect Listing

Pipe Segment Refere... A-36_A-35	City Oliver Springs	Street Arrowhead	Material Concrete Pipe (non-...	Location C... Easement/R...	Sewer Use Sanitary
Upstream MH A-36	Total Length 114.5	Year Laid	Shape Circular	Location Details	
DS Manhole A-35	Length surveyed 114.5	Year Renewed	Height 15	Width 15	Pipe Joint... 4

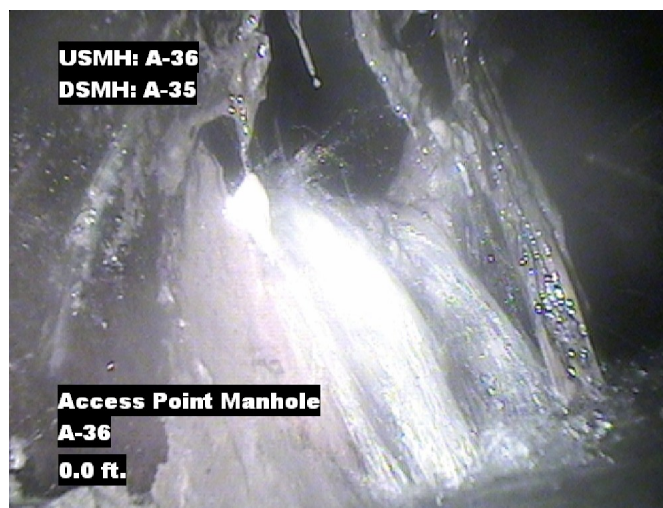
SPR N/A	MPR 16	PO Number 4397-03	Customer GRW
SPRI N/A	MPRI 2	Work Order 4397-02	Purpose Pre-Rehabilitation Survey
QSR N/A	QMR 2800		
OPR 16	Surveyed By Charlie Gordon	Direction Downstream	Date 20150902
OPRI 2	Certificate Number U-615-07000491	Pre-Cleaning No Pre-Cleaning	Time 13:47
	Date Cleaned	End Time 13:54	Weather Dry
		Additional Info	

Distance	Condition	Cont. Dfct.	Values			Joint	Clock Position		Grade
			1st	2nd	%		At/From	To	
0.0 ft.	Access Point Manhole				0	<input type="checkbox"/>			
Remarks: A-36									
0.0 ft.	Water Level				10	<input type="checkbox"/>			
3.6 ft.	Water Level Sag	S01			15	<input type="checkbox"/>			2
39.0 ft.	Water Level Sag	F01			15	<input type="checkbox"/>			2
109.2 ft.	Water Level Sag				15	<input type="checkbox"/>			2
112.3 ft.	Water Level				10	<input type="checkbox"/>			
114.5 ft.	Access Point Manhole				0	<input type="checkbox"/>			
Remarks: A-35									

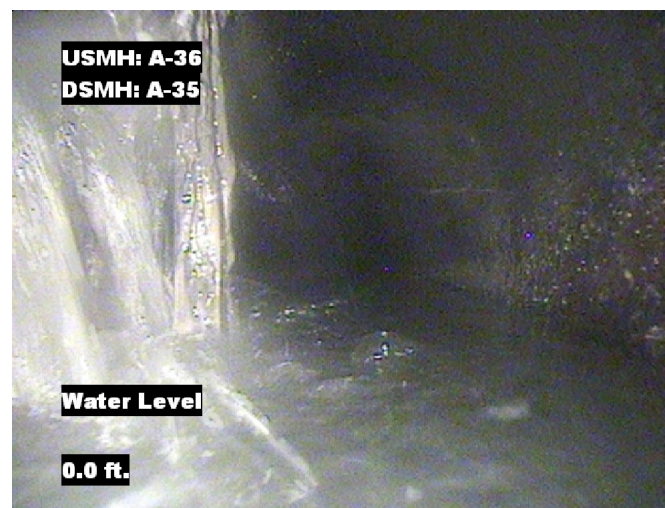


Image Report 4/Page

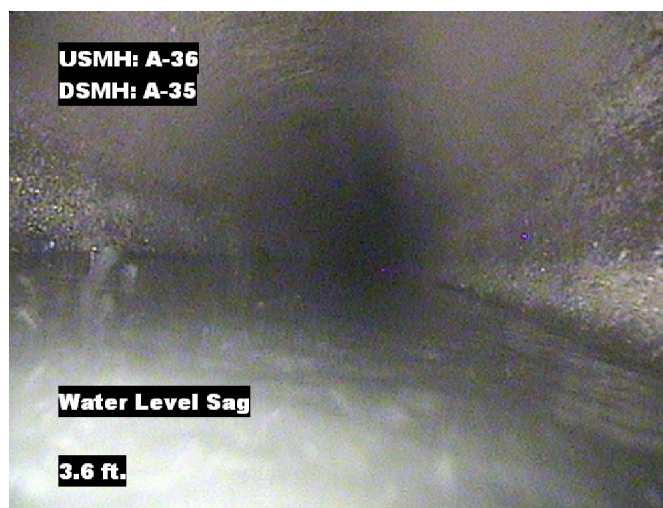
Pipe Segment Refere...	City	Street	Material	Location C...	Sewer Use
A-36_A-35	Oliver Springs	Arrowhead	Concrete Pipe (non-...	Easement/R...	Sanitary
Upstream MH	Total Length	Year Laid	Shape	Location Details	
A-36	114.5		Circular		
DS Manhole	Length surveyed	Year Renewed	Height	Width	Pipe Joint...
A-35	114.5		15	15	4



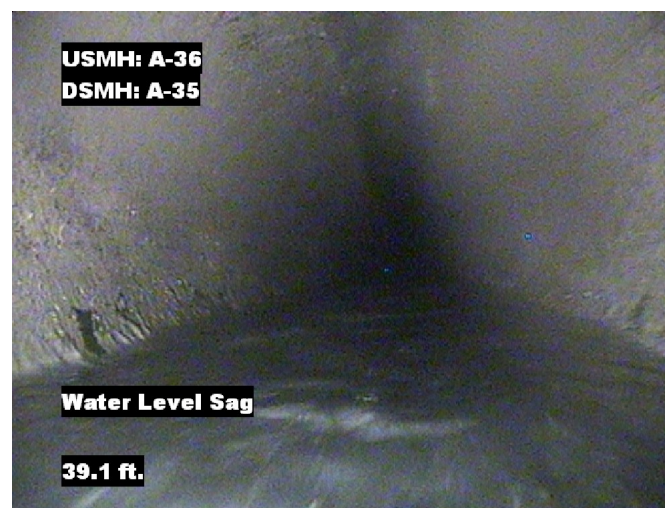
Distance: 0.0 ft. Grade: 0
Condition: Access Point Manhole
Remarks: A-36



Distance: 0.0 ft. Grade: 0
Condition: Water Level
Remarks: N/A



Distance: 3.6 ft. Grade: 2
Condition: Water Level Sag
Remarks: N/A



Distance: 39.0 ft. Grade: 2
Condition: Water Level Sag
Remarks: N/A

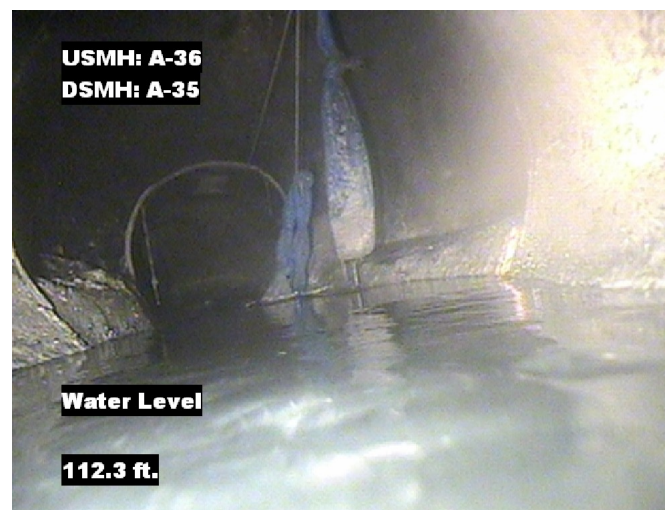


Image Report 4/Page

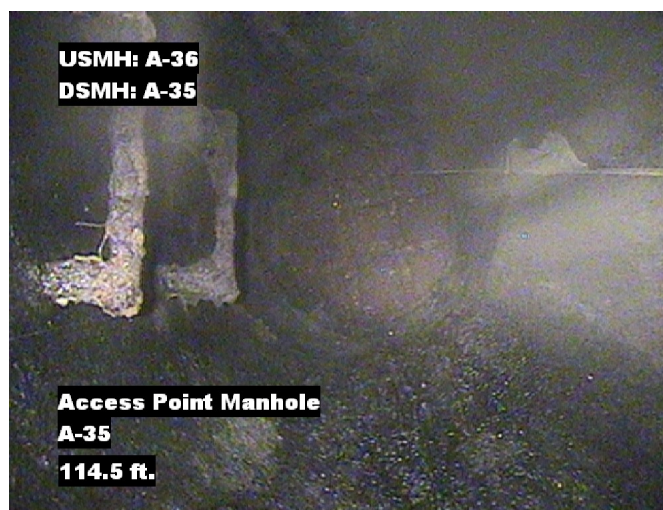
Pipe Segment Refere...	City	Street	Material	Location C...	Sewer Use
A-36_A-35	Oliver Springs	Arrowhead	Concrete Pipe (non-...	Easement/R...	Sanitary
Upstream MH	Total Length	Year Laid	Shape	Location Details	
A-36	114.5		Circular		
DS Manhole	Length surveyed	Year Renewed	Height	Width	Pipe Joint...
A-35	114.5		15	15	4



Distance: 109.2 ft. Grade: 2
Condition: Water Level Sag
Remarks: N/A



Distance: 112.3 ft. Grade: 0
Condition: Water Level
Remarks: N/A



Distance: 114.5 ft. Grade: 0
Condition: Access Point Manhole
Remarks: A-35



PACP Conditions

Pipe Segment Refere... A-36_A-35	City Oliver Springs	Street Arrowhead	Material Concrete Pipe (non-...	Location C... Easement/R...	Sewer Use Sanitary
Upstream MH A-36	Total Length 114.5	Year Laid	Shape Circular	Location Details	
DS Manhole A-35	Length surveyed 114.5	Year Renewed	Height 15	Width 15	Pipe Joint... 4
SPR N/A	MPR 16	PO Number 4397-03		Customer GRW	
SPRI N/A	MPRI 2	Work Order 4397-02		Purpose Pre-Rehabilitation Survey	
QSR N/A	QMR 2800				
OPR 16	Surveyed By Charlie Gordon	Direction Downstream	Date 20150902	Media label	
OPRI 2	Certificate Number U-615-07000491	Pre-Cleaning No Pre-Cleaning	Time 13:47	Weather Dry	
Date Cleaned			End Time 13:54	Additional Info	

Normal Defects			Structural Ratings			O & M Ratings			Combined Ratings		
			Grade Rating	No. Occur.	Rating	Grade Rating	No. Occur.	Rating	Grade Rating	No. Occur.	Rating
Continuous Defects			1	0	0	1	0	0	1	0	0
			2	0	0	2	1	2	2	1	2
			3	0	0	3	0	0	3	0	0
			4	0	0	4	0	0	4	0	0
			5	0	0	5	0	0	5	0	0
Code	ID	Length	0	0	0	2	7	14	2	7	14
MWLS	F01	35.4									
			Subtotals	0		Subtotals	8		Subtotals	8	
SUMMARY			Pipe Rating	0		Pipe Rating	16		Overall Pipe Rating	16	
			Structural Index	0		O&M Index	2.0		Overall Index	2.0	
			Str. Quick Rating	0000		O&M Quick Rating	2800		Ovrl. Quick Rating	2800	