



Defect Listing

Pipe Segment Refere... A-33_A-32	City Oliver Springs	Street Arrowhead Ln	Material Fibreglass Reinforc...	Location C... Easement/R...	Sewer Use Sanitary
Upstream MH A-33	Total Length 221.5	Year Laid	Shape Circular	Location Details	
DS Manhole A-32	Length surveyed 221.5	Year Renewed	Height 15	Width 15	Pipe Joint... N/A

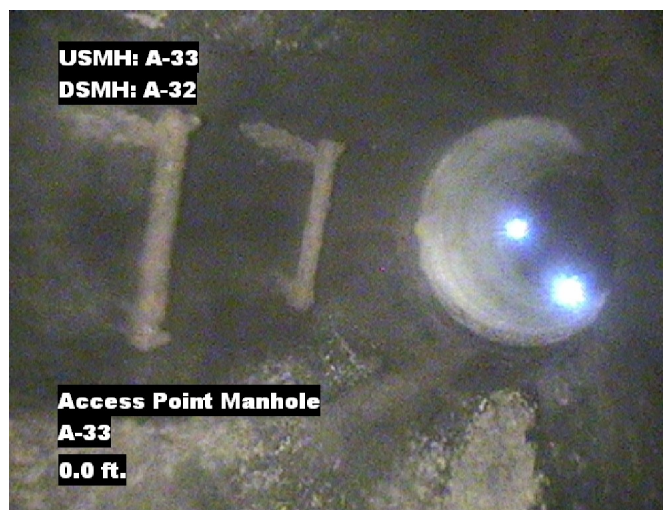
SPR N/A	MPR 8	PO Number 4397-03		Customer GRW	
SPRI N/A	MPRI 2	Work Order 4397-02		Purpose Pre-Rehabilitation Survey	
QSR N/A	QMR 2400				
OPR 8	Surveyed By Charlie Gordon	Direction Downstream	Date 20150903	Media label	
OPRI 2	Certificate Number U-615-07000491	Pre-Cleaning No Pre-Cleaning	Time 07:32	Weather Dry	
Date Cleaned			End Time 07:44	Additional Info	

Distance	Condition	Cont. Dfct.	Values			Joint	Clock Position		Grade
			1st	2nd	%		At/From	To	
0.0 ft.	Access Point Manhole				0	<input type="checkbox"/>			
Remarks: A-33									
0.0 ft.	Water Level				15	<input type="checkbox"/>			
6.4 ft.	Water Level Sag	S01			15	<input type="checkbox"/>			2
25.1 ft.	Water Level Sag	F01			15	<input type="checkbox"/>			2
218.0 ft.	Water Level				10	<input type="checkbox"/>			
221.5 ft.	Access Point Manhole				0	<input type="checkbox"/>			
Remarks: A-32									

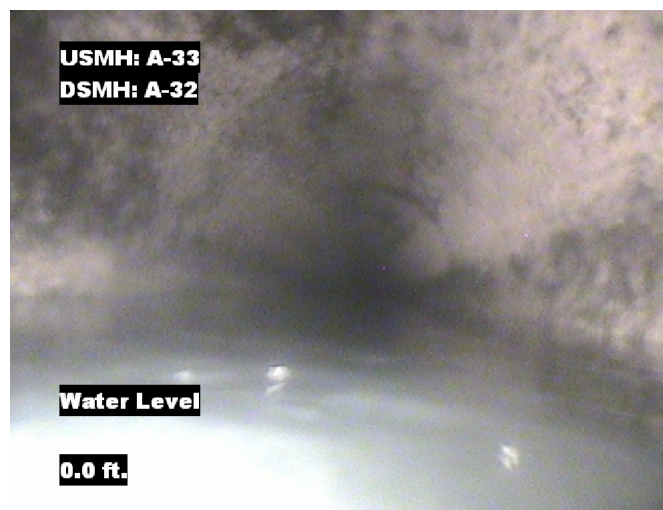


Image Report 4/Page

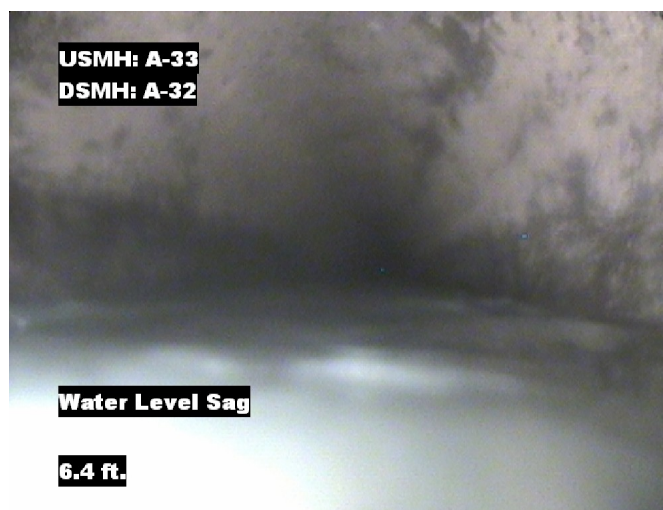
Pipe Segment Refere...	City	Street	Material	Location C...	Sewer Use
A-33_A-32	Oliver Springs	Arrowhead Ln	Fibreglass Reinforc...	Easement/R...	Sanitary
Upstream MH	Total Length	Year Laid	Shape	Location Details	
A-33	221.5		Circular		
DS Manhole	Length surveyed	Year Renewed	Height	Width	Pipe Joint...
A-32	221.5		15	15	N/A



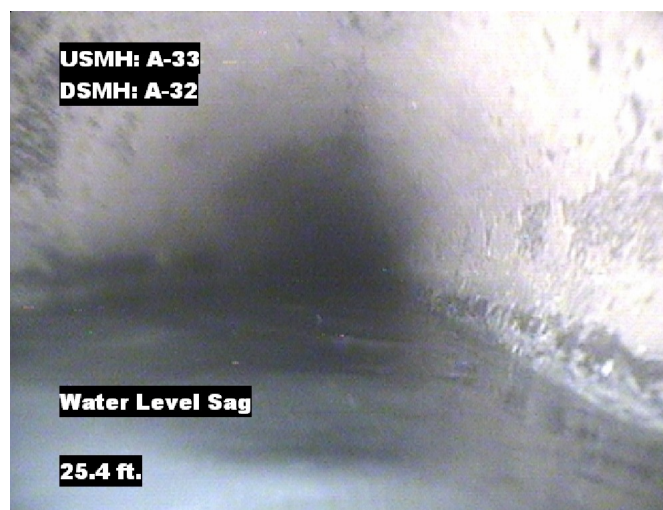
Distance: 0.0 ft. Grade: 0
Condition: Access Point Manhole
Remarks: A-33



Distance: 0.0 ft. Grade: 0
Condition: Water Level
Remarks: N/A



Distance: 6.4 ft. Grade: 2
Condition: Water Level Sag
Remarks: N/A



Distance: 25.1 ft. Grade: 2
Condition: Water Level Sag
Remarks: N/A

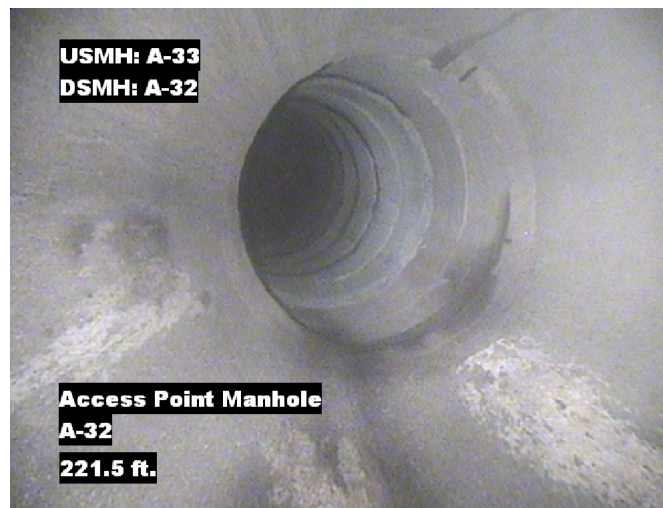


Image Report 4/Page

Pipe Segment Refere...	City	Street	Material	Location C...	Sewer Use
A-33_A-32	Oliver Springs	Arrowhead Ln	Fibreglass Reinforc...	Easement/R...	Sanitary
Upstream MH	Total Length	Year Laid	Shape	Location Details	
A-33	221.5		Circular		
DS Manhole	Length surveyed	Year Renewed	Height	Width	Pipe Joint...
A-32	221.5		15	15	N/A



Distance: 218.0 ft. Grade: 0
Condition: Water Level
Remarks: N/A



Distance: 221.5 ft. Grade: 0
Condition: Access Point Manhole
Remarks: A-32



PACP Conditions

Pipe Segment Refere... A-33_A-32	City Oliver Springs	Street Arrowhead Ln	Material Fibreglass Reinforc...	Location C... Easement/R...	Sewer Use Sanitary
Upstream MH A-33	Total Length 221.5	Year Laid	Shape Circular	Location Details	
DS Manhole A-32	Length surveyed 221.5	Year Renewed	Height 15	Width 15	Pipe Joint... N/A
SPR N/A	MPR 8	PO Number 4397-03		Customer GRW	
SPRI N/A	MPRI 2	Work Order 4397-02		Purpose Pre-Rehabilitation Survey	
QSR N/A	QMR 2400				
OPR 8	Surveyed By Charlie Gordon	Direction Downstream	Date 20150903	Media label	
OPRI 2	Certificate Number U-615-07000491	Pre-Cleaning No Pre-Cleaning	Time 07:32	Weather Dry	
Date Cleaned			End Time 07:44	Additional Info	

Normal Defects			Structural Ratings			O & M Ratings			Combined Ratings		
			Grade Rating	No. Occur.	Rating	Grade Rating	No. Occur.	Rating	Grade Rating	No. Occur.	Rating
Continuous Defects			1	0	0	1	0	0	1	0	0
			2	0	0	2	0	0	2	0	0
			3	0	0	3	0	0	3	0	0
			4	0	0	4	0	0	4	0	0
			5	0	0	5	0	0	5	0	0
Code	ID	Length	0	0	0	2	4	8	2	4	8
MWLS	F01	18.7									
			Subtotals	0		Subtotals	4		Subtotals	4	
SUMMARY			Pipe Rating		0	Pipe Rating		8	Overall Pipe Rating		8
			Structural Index		0	O&M Index		2.0	Overall Index		2.0
			Str. Quick Rating		0000	O&M Quick Rating		2400	Ovrl. Quick Rating		2400