



## Defect Listing

Pipe Segment Refere... <b>A-32_A-31</b>	City <b>Oliver Springs</b>	Street <b>Arrowhead Ln</b>	Material <b>Fibreglass Reinforc...</b>	Location C... <b>Easement/R...</b>	Sewer Use <b>Sanitary</b>
Upstream MH <b>A-32</b>	Total Length <b>281.7</b>	Year Laid	Shape <b>Circular</b>	Location Details	
DS Manhole <b>A-31</b>	Length surveyed <b>281.7</b>	Year Renewed	Height <b>15</b>	Width <b>15</b>	Pipe Joint... <b>N/A</b>

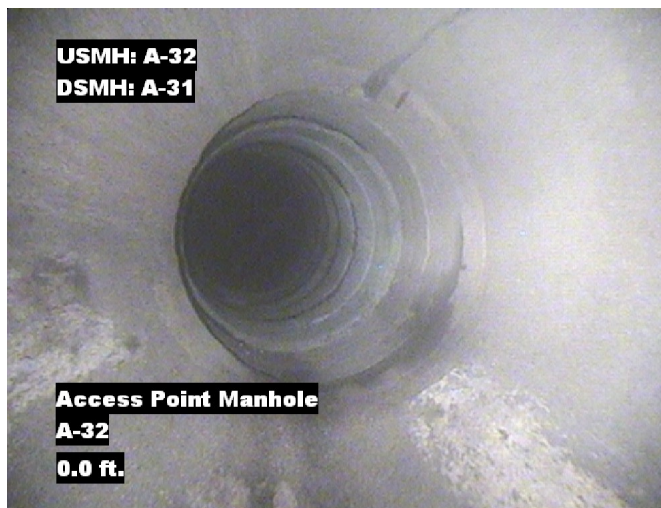
SPR <b>N/A</b>	MPR <b>1</b>	PO Number <b>4397-03</b>	Customer <b>GRW</b>
SPRI <b>N/A</b>	MPRI <b>1</b>	Work Order <b>4397-02</b>	Purpose <b>Pre-Rehabilitation Survey</b>
QSR <b>N/A</b>	QMR <b>1100</b>		
OPR <b>1</b>	Surveyed By <b>Charlie Gordon</b>	Direction <b>Downstream</b>	Date <b>20150903</b>
OPRI <b>1</b>	Certificate Number <b>U-615-07000491</b>	Pre-Cleaning <b>No Pre-Cleaning</b>	Time <b>07:52</b>
	Date Cleaned	End Time <b>08:09</b>	Weather <b>Dry</b>
		Additional Info	

Distance	Condition	Cont. Dfct.	Values			Joint	Clock Position		Grade
			1st	2nd	%		At/From	To	
0.0 ft.	Access Point Manhole				0	<input type="checkbox"/>			
Remarks: A-32									
0.0 ft.	Water Level				10	<input type="checkbox"/>			
200.3 ft.	Water Level				20	<input type="checkbox"/>			
278.8 ft.	Alignment Left				5	<input type="checkbox"/>			1
279.3 ft.	Water Level				10	<input type="checkbox"/>			
281.7 ft.	Access Point Manhole				0	<input type="checkbox"/>			
Remarks: A-31									



## Image Report 4/Page

Pipe Segment Refere...	City	Street	Material	Location C...	Sewer Use
A-32_A-31	Oliver Springs	Arrowhead Ln	Fibreglass Reinforc...	Easement/R...	Sanitary
Upstream MH	Total Length	Year Laid	Shape	Location Details	
A-32	281.7		Circular		
DS Manhole	Length surveyed	Year Renewed	Height	Width	Pipe Joint...
A-31	281.7		15	15	N/A



Distance: 0.0 ft. Grade: 0  
Condition: Access Point Manhole  
Remarks: A-32



Distance: 0.0 ft. Grade: 0  
Condition: Water Level  
Remarks: N/A



Distance: 200.3 ft. Grade: 0  
Condition: Water Level  
Remarks: N/A



Distance: 278.8 ft. Grade: 1  
Condition: Alignment Left  
Remarks: N/A



## Image Report 4/Page

Pipe Segment Refere...	City	Street	Material	Location C...	Sewer Use
<b>A-32_A-31</b>	<b>Oliver Springs</b>	<b>Arrowhead Ln</b>	<b>Fibreglass Reinforc...</b>	<b>Easement/R...</b>	<b>Sanitary</b>
<b>Upstream MH</b>	Total Length	Year Laid	<b>Shape</b>	Location Details	
<b>A-32</b>	<b>281.7</b>		<b>Circular</b>		
<b>DS Manhole</b>	<b>Length surveyed</b>	Year Renewed	<b>Height</b>	Width	Pipe Joint...
<b>A-31</b>	<b>281.7</b>		<b>15</b>	<b>15</b>	<b>N/A</b>



Distance: 279.3 ft.      Grade: 0  
Condition: Water Level  
Remarks: N/A



Distance: 281.7 ft.      Grade: 0  
Condition: Access Point Manhole  
Remarks: A-31



## PACP Conditions

Pipe Segment Refere... <b>A-32_A-31</b>	City <b>Oliver Springs</b>	Street <b>Arrowhead Ln</b>	Material <b>Fibreglass Reinforc...</b>	Location C... <b>Easement/R...</b>	Sewer Use <b>Sanitary</b>
Upstream MH <b>A-32</b>	Total Length <b>281.7</b>	Year Laid	Shape <b>Circular</b>	Location Details	
DS Manhole <b>A-31</b>	Length surveyed <b>281.7</b>	Year Renewed	Height <b>15</b>	Width <b>15</b>	Pipe Joint... <b>N/A</b>
SPR <b>N/A</b>	MPR <b>1</b>	PO Number <b>4397-03</b>		Customer <b>GRW</b>	
SPRI <b>N/A</b>	MPRI <b>1</b>	Work Order <b>4397-02</b>		Purpose <b>Pre-Rehabilitation Survey</b>	
QSR <b>N/A</b>	QMR <b>1100</b>				
OPR <b>1</b>	Surveyed By <b>Charlie Gordon</b>	Direction <b>Downstream</b>	Date <b>20150903</b>	Media label	
OPRI <b>1</b>	Certificate Number <b>U-615-07000491</b>	Pre-Cleaning <b>No Pre-Cleaning</b>	Time <b>07:52</b>	Weather <b>Dry</b>	
Date Cleaned			End Time <b>08:09</b>	Additional Info	

Normal Defects			Structural Ratings			O & M Ratings			Combined Ratings		
			Grade Rating	No. Occur.	Rating	Grade Rating	No. Occur.	Rating	Grade Rating	No. Occur.	Rating
			1	0	0	1	1	1	1	1	1
			2	0	0	2	0	0	2	0	0
			3	0	0	3	0	0	3	0	0
			4	0	0	4	0	0	4	0	0
			5	0	0	5	0	0	5	0	0
Continuous Defects											
Code	ID	Length									
			Subtotals	0		Subtotals	1		Subtotals	1	
SUMMARY			Pipe Rating	0		Pipe Rating	1		Overall Pipe Rating	1	
			Structural Index	0		O&M Index	1.0		Overall Index	1.0	
			Str. Quick Rating	0000		O&M Quick Rating	1100		Ovrl. Quick Rating	1100	