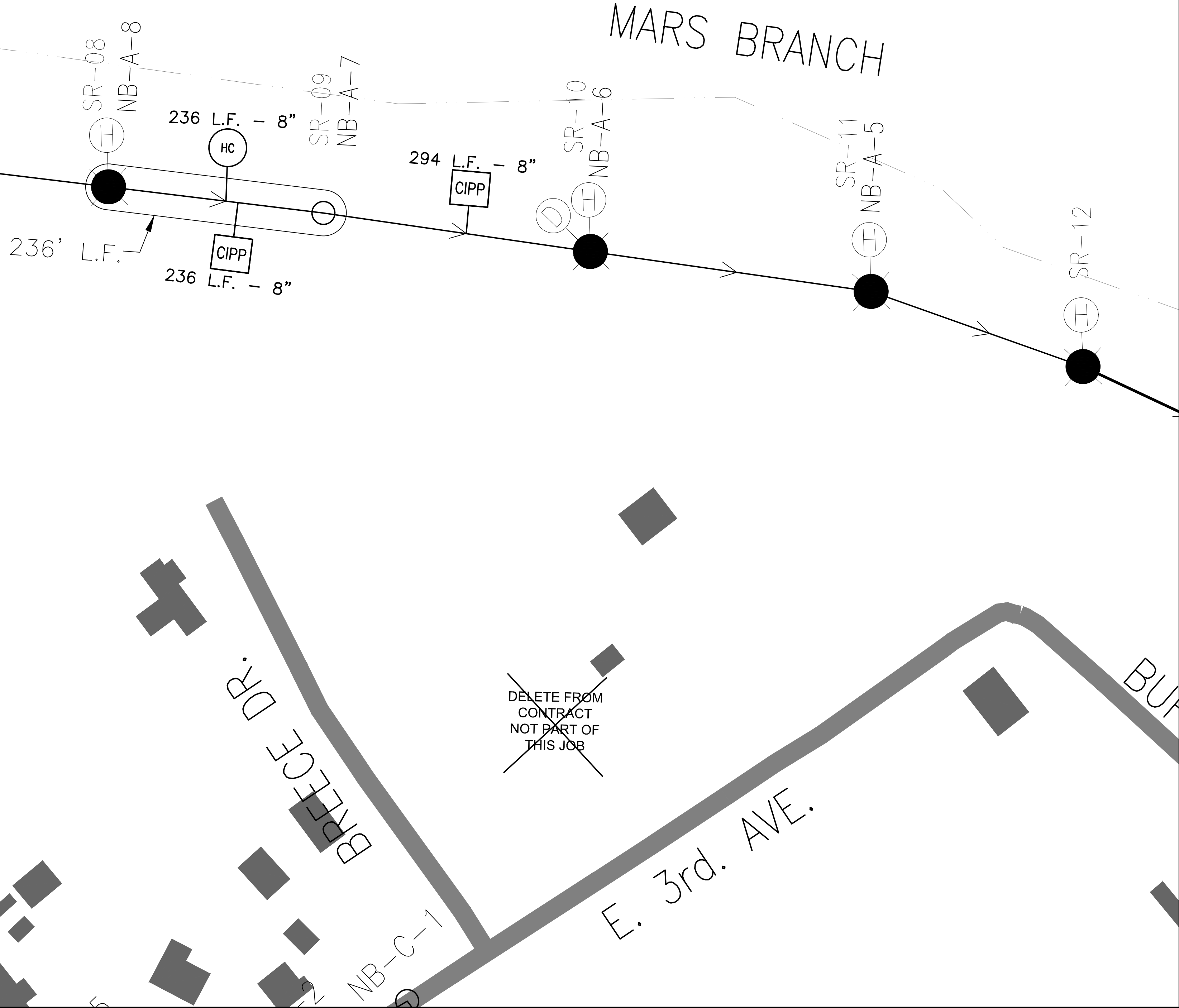


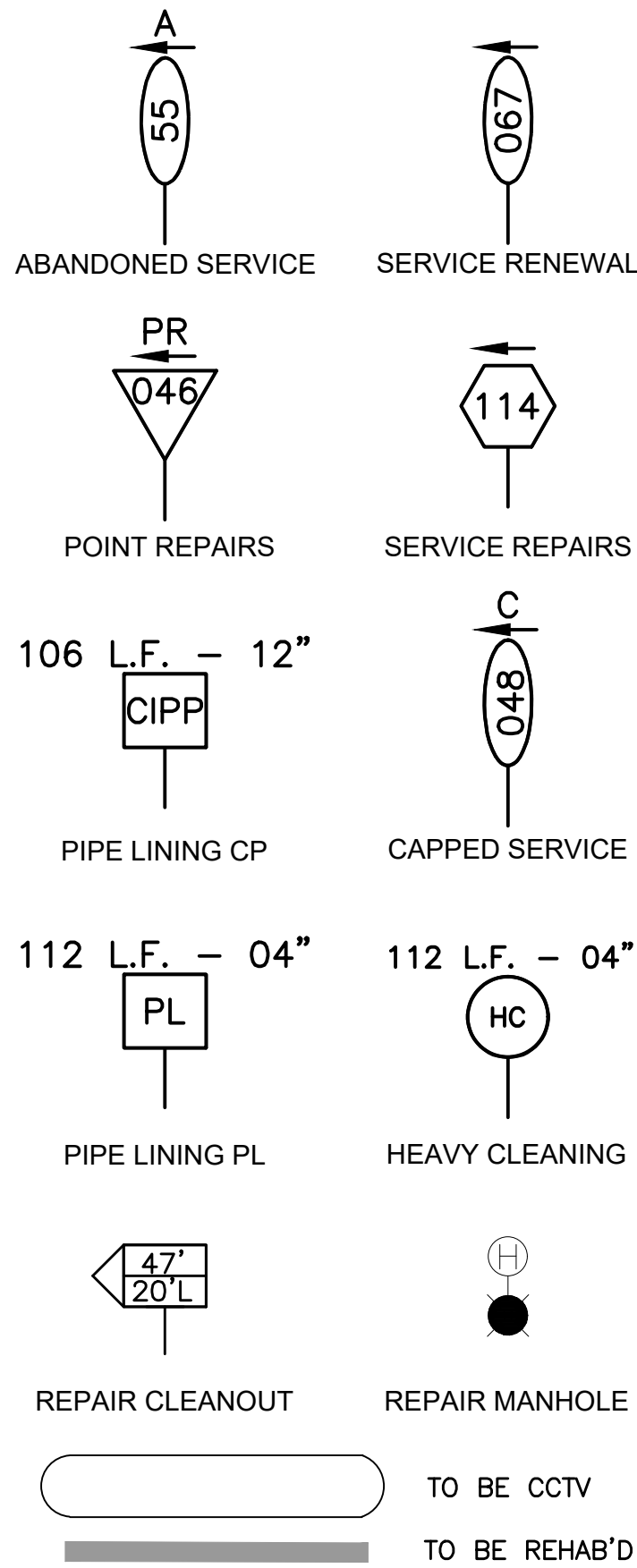
MATCHLINE SHEET C-03



MATCHLINE SHEET C-05



SEWER REHABILITATION
STANDARD LEGEND



MANHOLE REHABILITATION

MANHOLE EXTRA DEPTH

- (8) 6.1 TO 8.0 DEPTH
 (10) 8.1 TO 10.0 DEPTH
 (12) 10.1 TO 12.0 DEPTH
 (14) 12.1 TO 14.0 DEPTH
 (16) 14.1 TO 16.0 DEPTH
 (20) 18.1 TO 20.0 DEPTH
 (NA) UNKNOWN DEPTH

MANHOLE REPAIRS

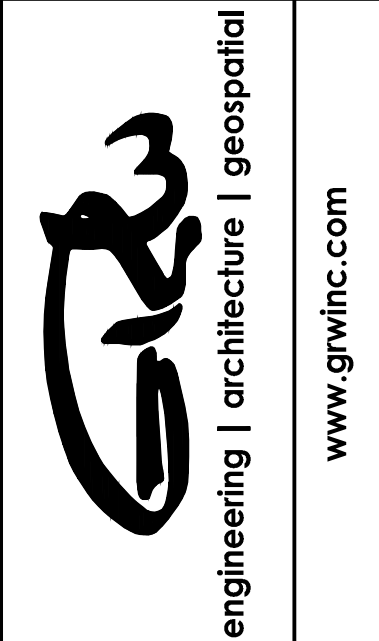
- (A) LOCATE/UNCOVER
 (B) NON-ENTRY INSPECTION
 (C) RESET FRAME
 (D) REPLACE FRAME/COVER
 (E) REPLACE COVER
 (F) REPLACE EXISTING WATERTIGHT FRAME & COVER
 (G) RAISE CASTING
 (H) MANHOLE REHABILITATION
 (H2) ADD H2S PROTECTION
 (J) NEW MANHOLE INSTALLATION
 (J) ADD BENCH TO MANHOLE BOTTOM
 (K) PLUG & FILL AROUND PIPES
 (L) REHAB RISERS
 (M) MISC. SEE NOTE

ABBREVIATIONS

- CCTV - CLEAN AND CCTV LINE
 CO - REPLACE CLEANOUT
 CNL - COULD NOT LOCATE
 CP - CURED-IN-PLACE LINING
 IPR - INTERNAL POINT REPAIR
 C/L - CLEAN AND LINE MANHOLE
 NA - NOT APPLICABLE
 PE - POLYETHYLENE
 PL - PIPE LINING
 PL/B - PIPE BURSTING
 PL/R - REPLACE PIPE
 PP - PRIVATE PROPERTY
 PR - POINT REPAIR
 PVC - POLYVINYL CHLORIDE
 SL - SLIP Lining
 SOS - SERVICES ON SEGMENT
 SR - SERVICE REPAIR



SRW PROJECT NO. 3827-16



SANITARY SEWER REHABILITATION
MARS BRANCH
SANITARY SEWER REHABILITATION
CITY OF LOBELVILLE, TENNESSEE

DESIGNED		DRAWN		REVIEWED		APPROVED	
NO.	DATE	BY	DATE	BY	DATE	BY	DATE

DATE: SEPTEMBER 2024

SCALE: 1:75

SHEET NO.

C-04

CONTRACT DRAWINGS