

MINIMUM TOP WIDTH (W) REQUIRED FOR SEDIMENT TRAP EMBANKMENTS ACCORDING TO HEIGHT OF EMBANKMENT (FEET)

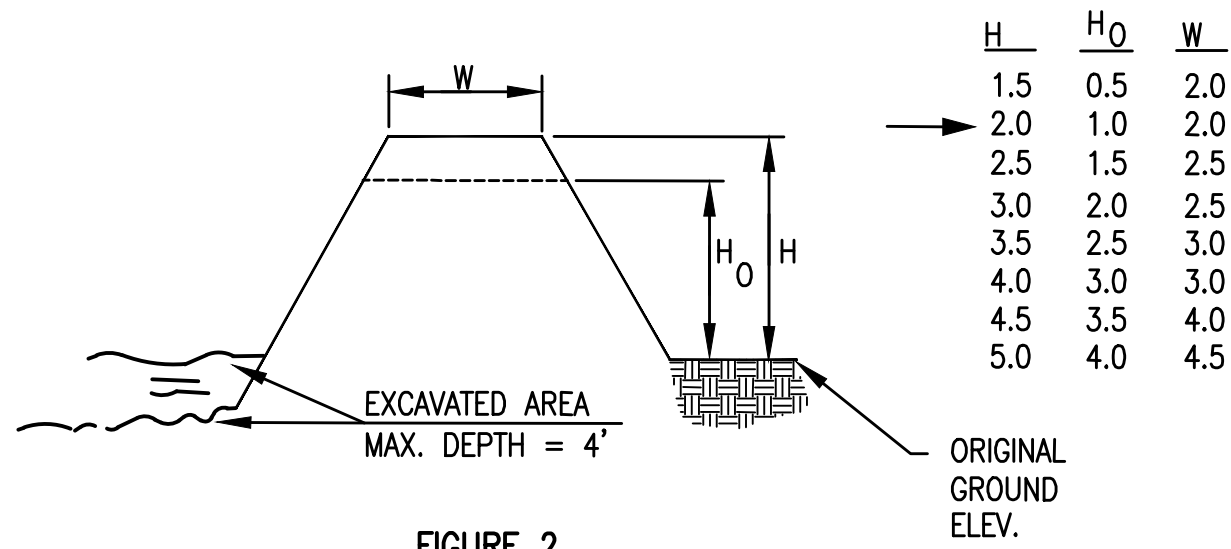
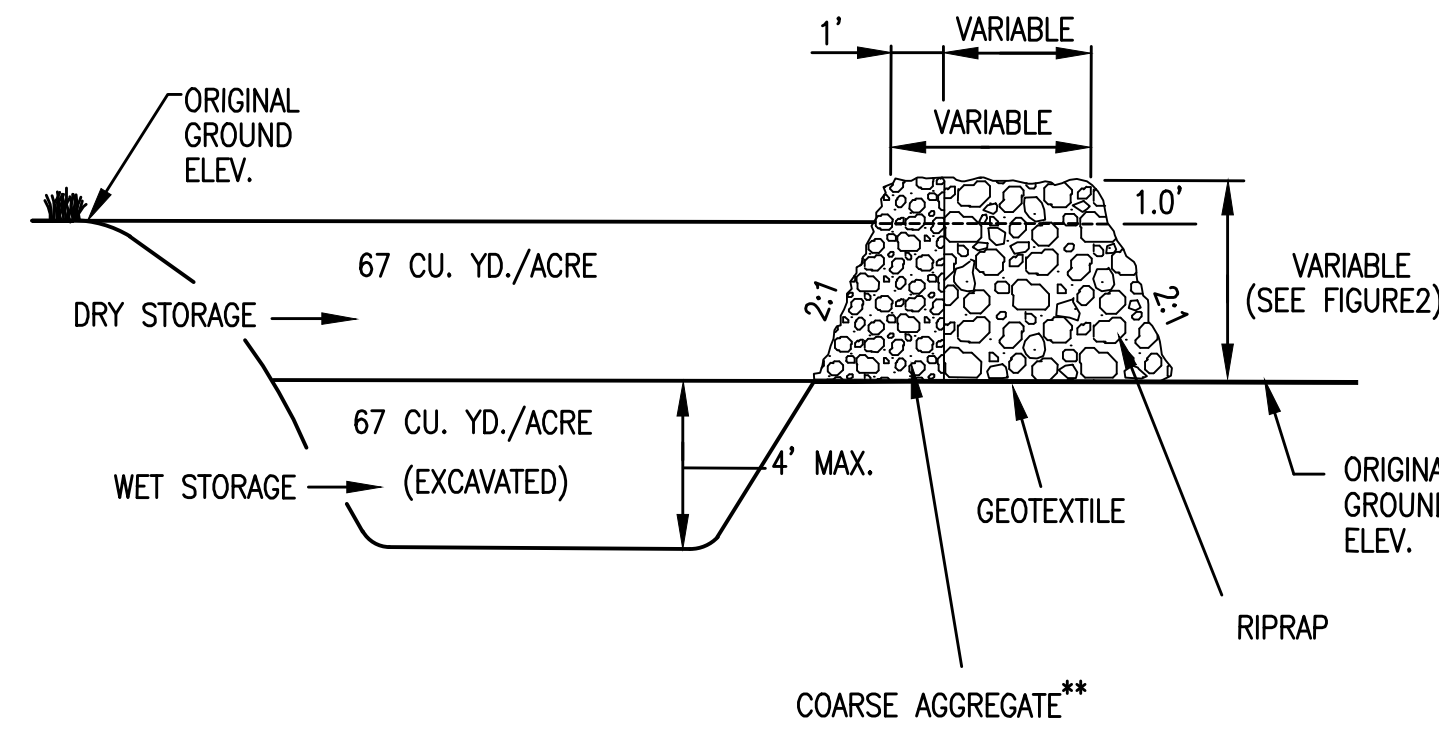
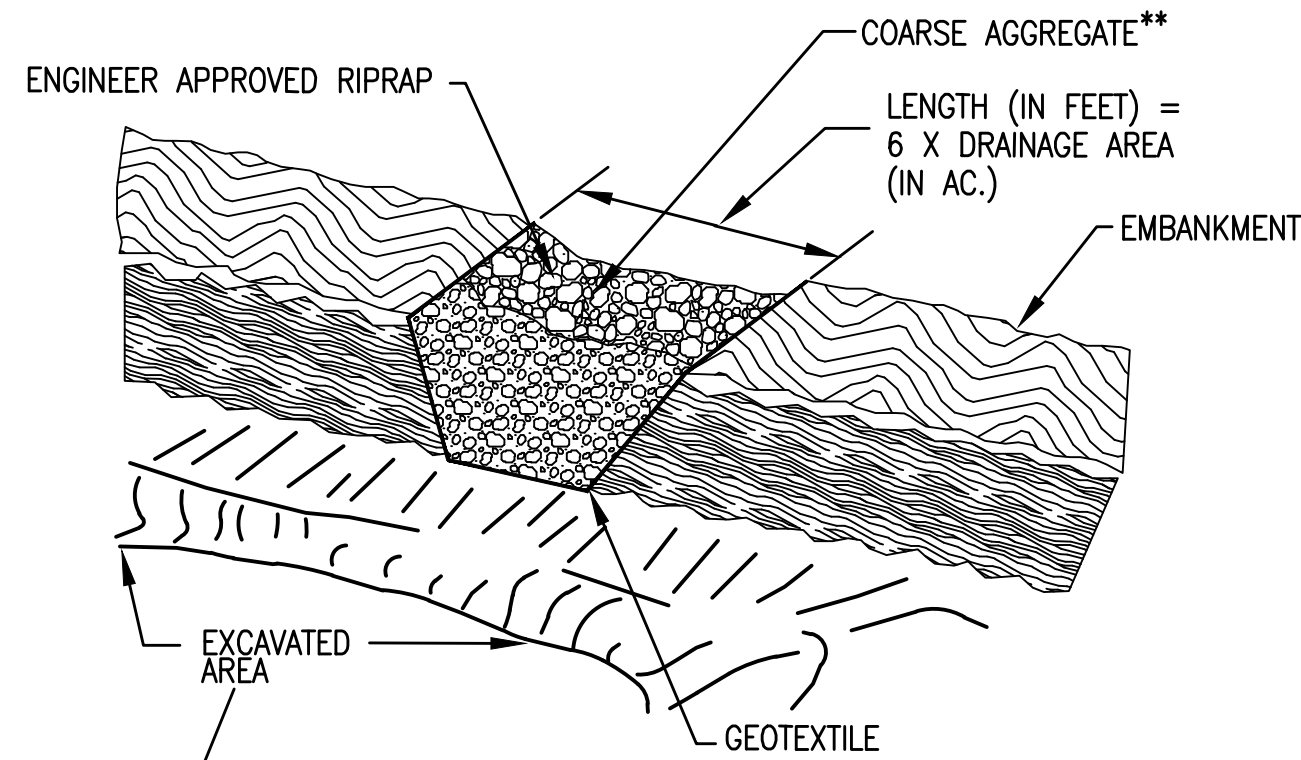


FIGURE 2

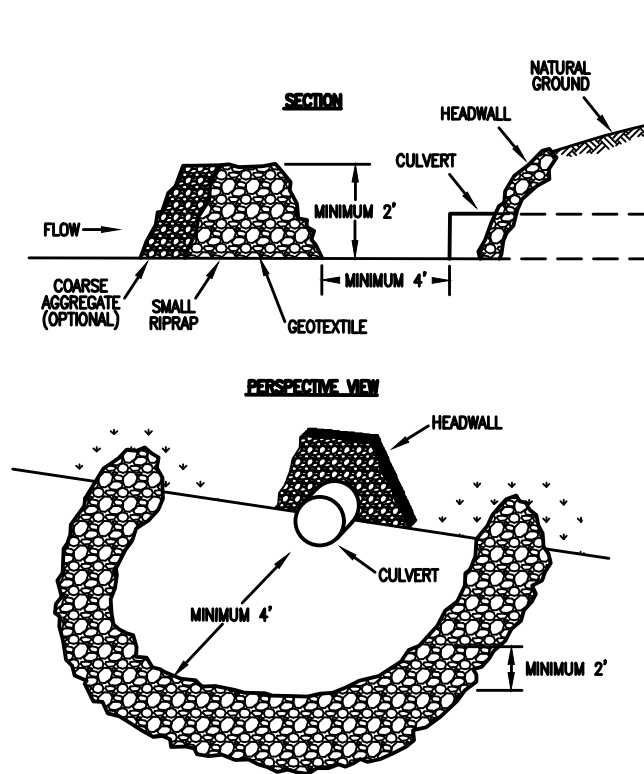


**COARSE AGGREGATE SHOULD BE ENGINEER APPROVED

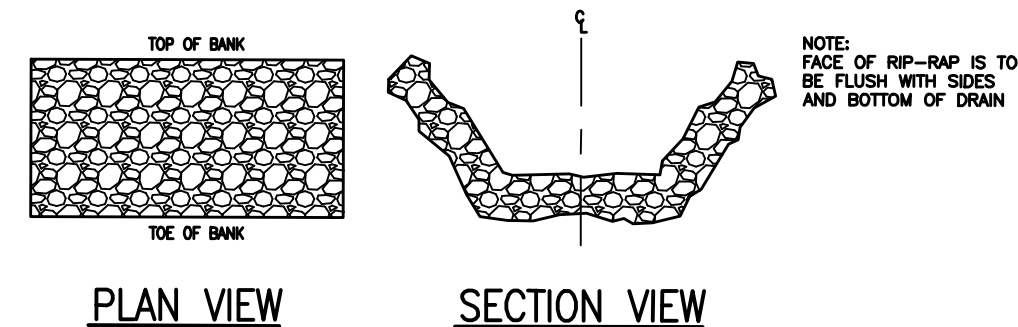
CROSS SECTION OF OUTLET



OUTLET (PERSPECTIVE VIEW)
SEDIMENT TRAP DETAIL
SCALE: NTS



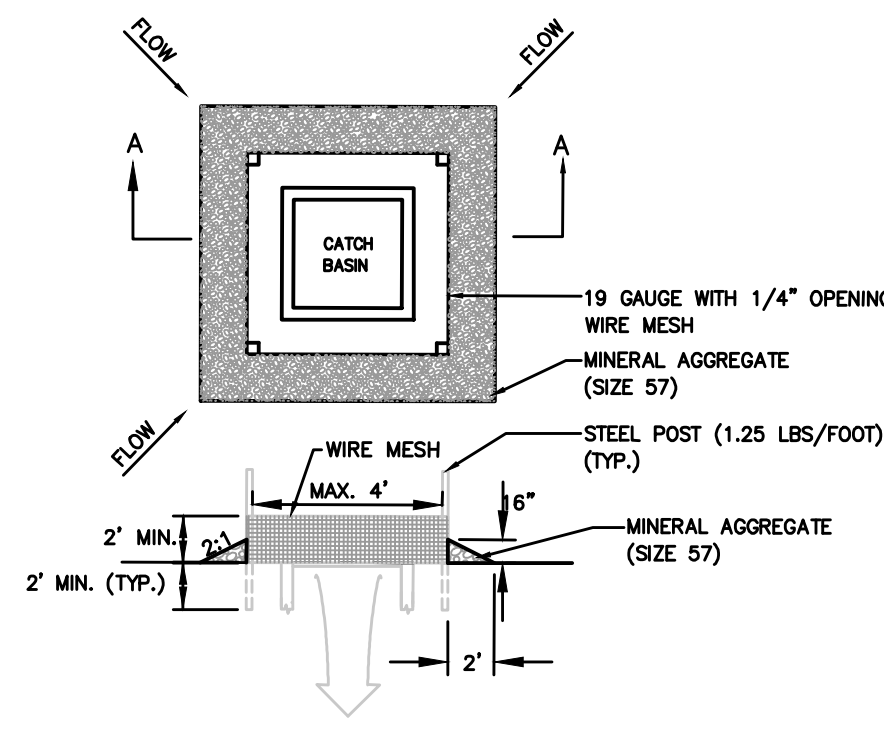
STONE FILTER RING
NOT TO SCALE



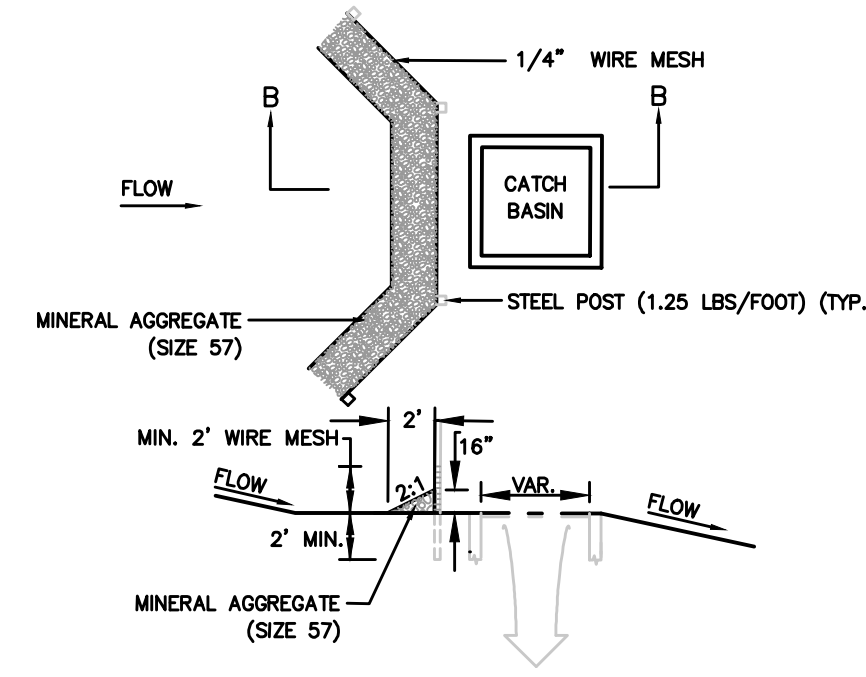
RIP-RAP DETAIL
NOT TO SCALE

EROSION CONTROL NOTES:

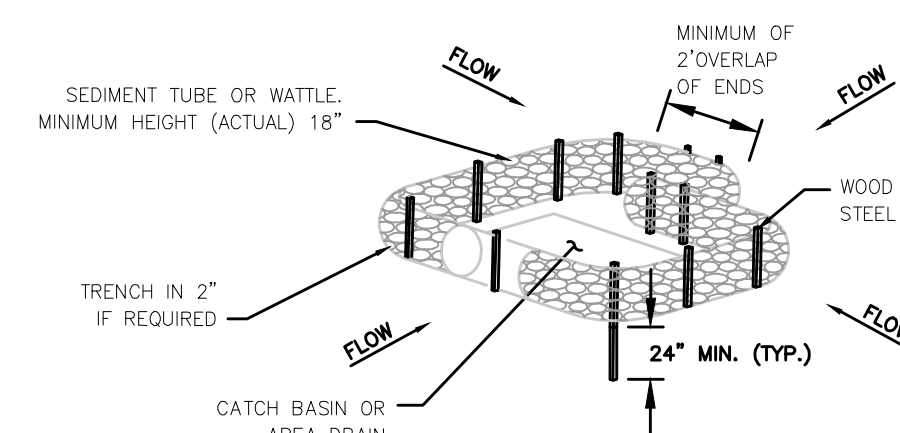
- All work shall be done in accordance with the Storm Water Pollution Prevention Plan (SWPPP), if required.
- No work may proceed until a Notice of Coverage (NOC) has been issued by the State of Tennessee Department of Environment and Conservation.
- SWPPP must be available at the site for review at all times (if required).
- At a minimum, the Contractor shall install silt fence on the downhill side of the proposed water line construction area.
- Contractor shall provide ditch checks as required.
- Contractor shall furnish and install temporary erosion control blanket/matting on all slopes greater than 2.5:1.
- All areas to remain bare more than 15 days must be temporarily stabilized in accordance with the current Best Management Practices (BMP's).
- Erosion controls shall be checked and repaired if necessary at least twice each calendar week.
- All erosion control measures utilized within State of Tennessee ROW's shall meet or exceed the TDOT requirements.



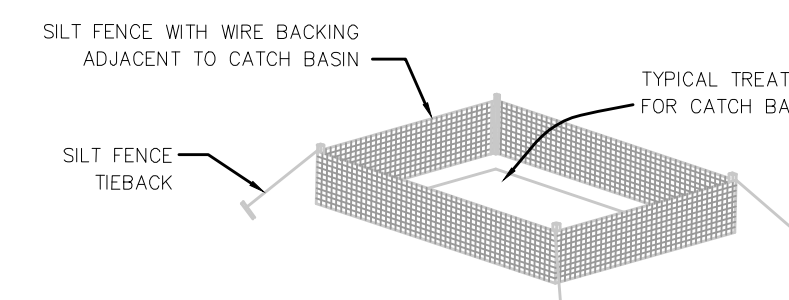
SECTION A-A
HARDWARE CLOTH AND GRAVEL INLET PROTECTION



SECTION B-B
HARDWARE CLOTH AND GRAVEL INLET PROTECTION (FLOW FROM ONE SIDE)



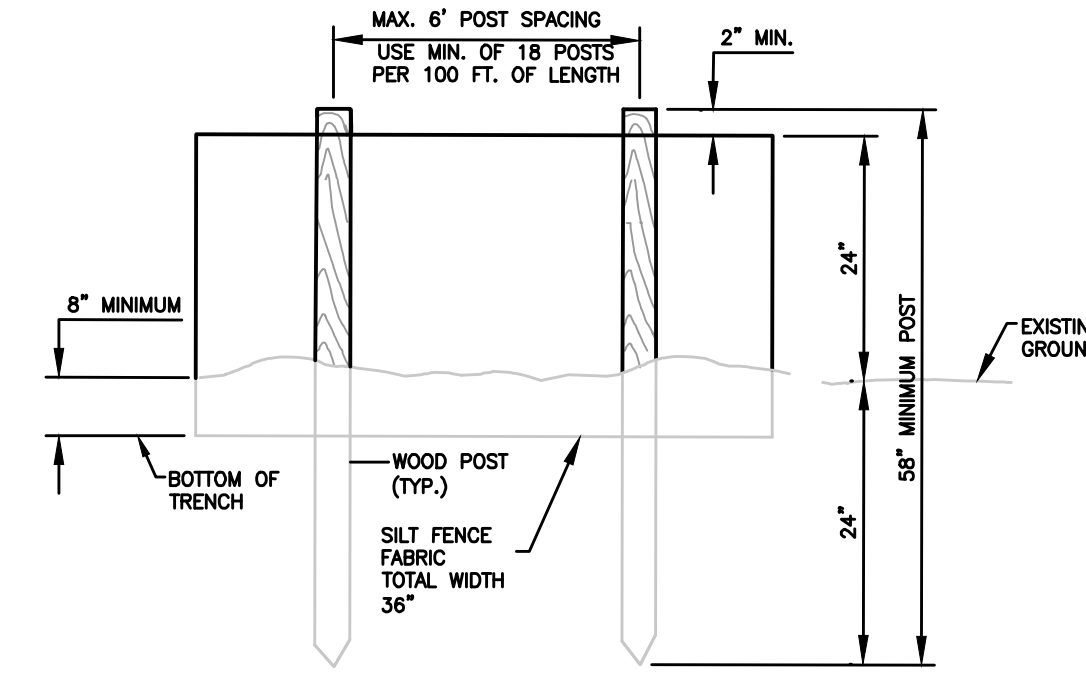
CATCH BASIN PROTECTION (TYPE D)



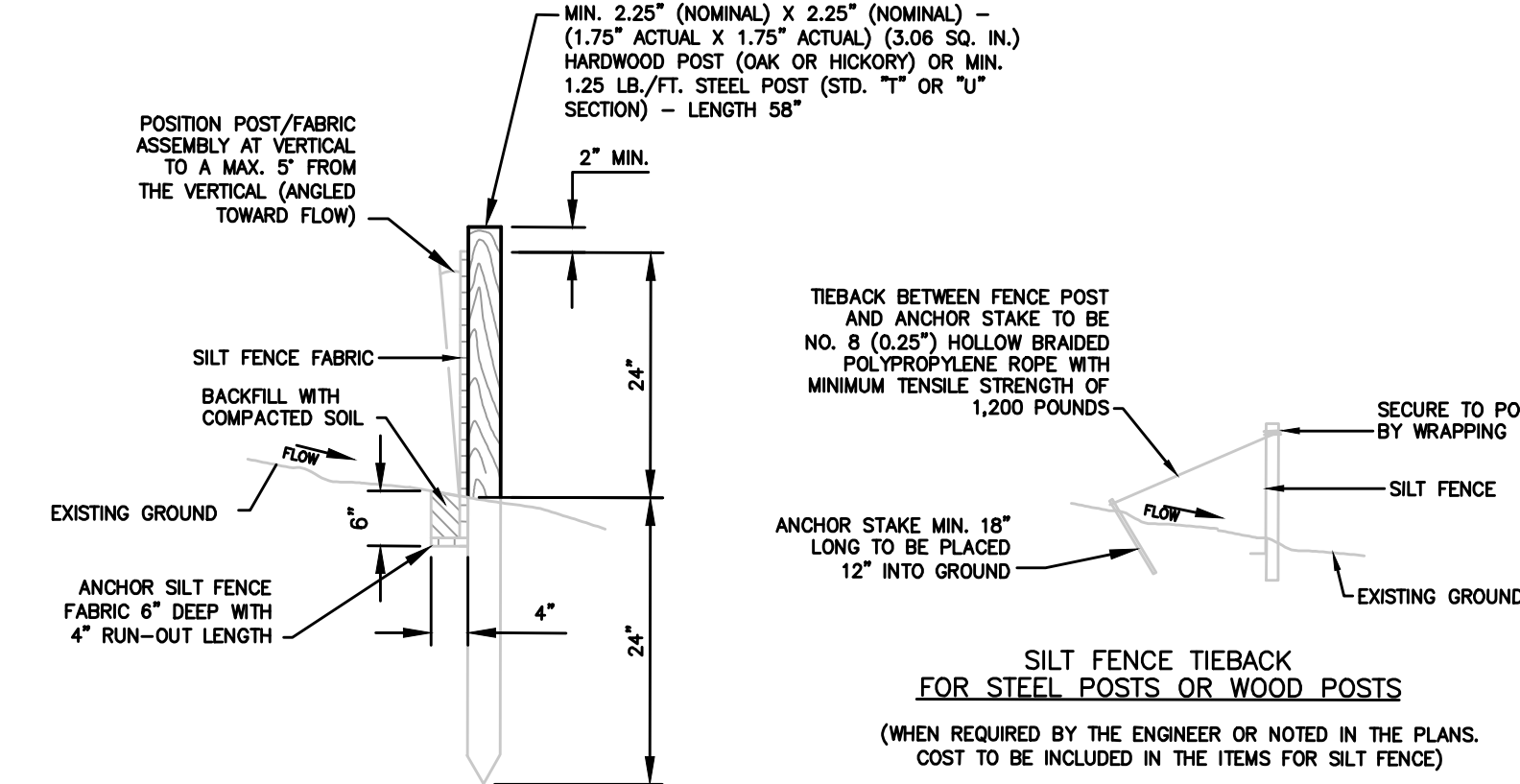
CATCH BASIN PROTECTION (TYPE E)



INLET PROTECTION (7.35)
NOT TO SCALE



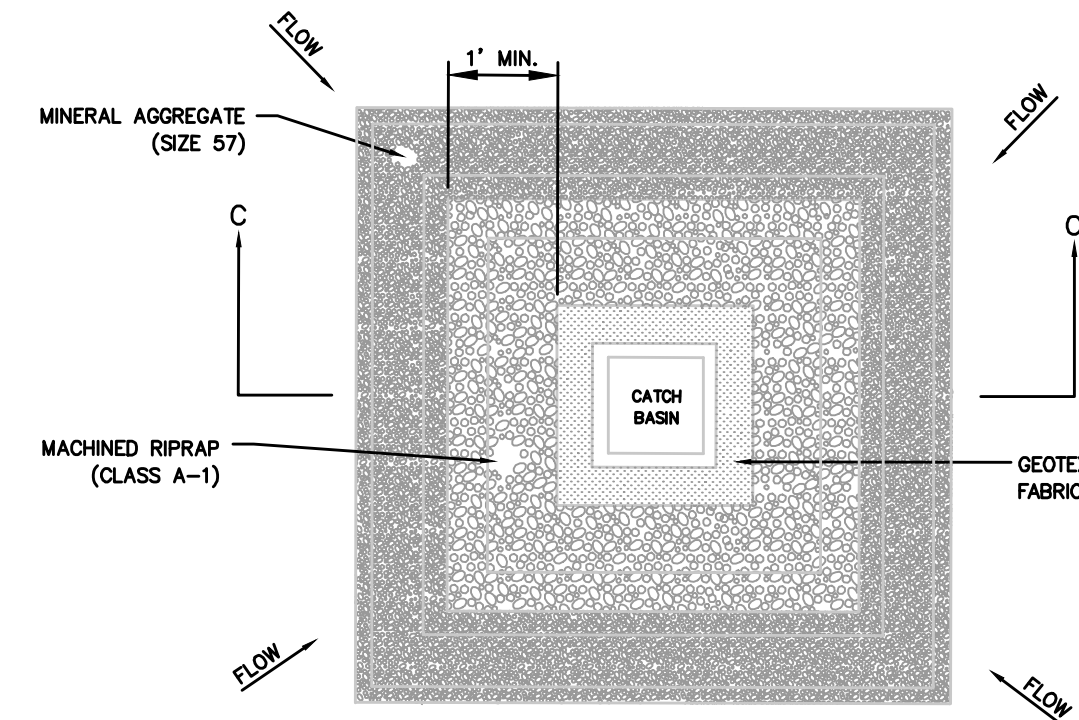
ELEVATION VIEW



SECTIONAL VIEW

EROSION CONTROL PLAN LEGEND: SILT FENCE

SILT FENCE (7.34)
NOT TO SCALE



SECTION C-C
CATCH BASIN PROTECTION

GRW PROJECT NO. 3827-16

ALL RIGHTS RESERVED. NO PART OF THIS DOCUMENT SHALL BE REPRODUCED IN WHOLE OR IN PART WITHOUT WRITTEN PERMISSION.

engineering | architecture | geospatial

www.grwinc.com

CONTRACT DRAWINGS

STANDARD EROSION CONTROL DETAILS

SANITARY SEWER REHABILITATION

CITY OF LOBELVILLE, TENNESSEE

DESIGNED	RG	RG	RG	RG
DATE	BY	DATE	BY	DATE

REVISIONS

NO	DESCRIPTION	DATE	BY	DATE	BY

DATE: SEPTEMBER 2024

SCALE: AS NOTED

SHEET NO. EC-11