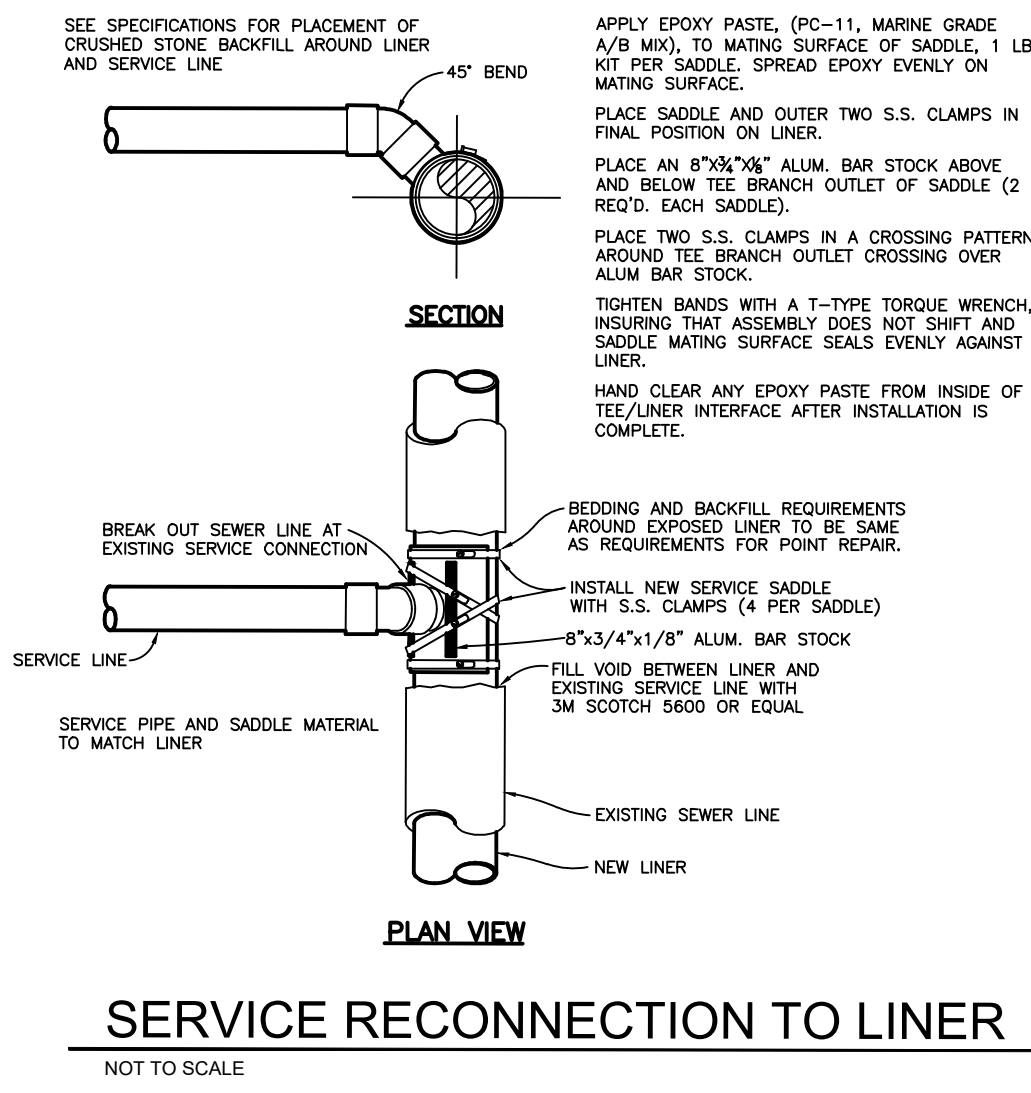
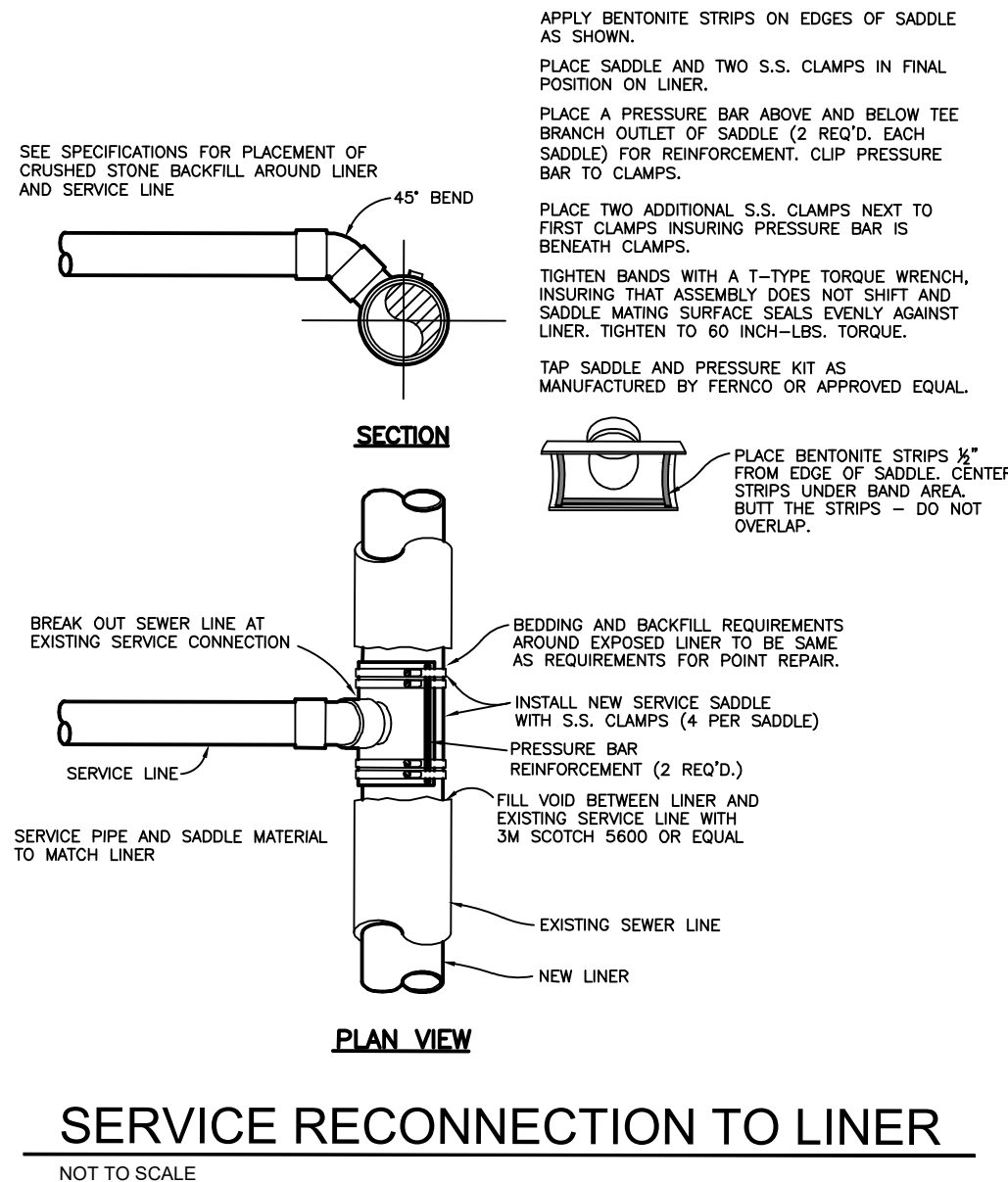
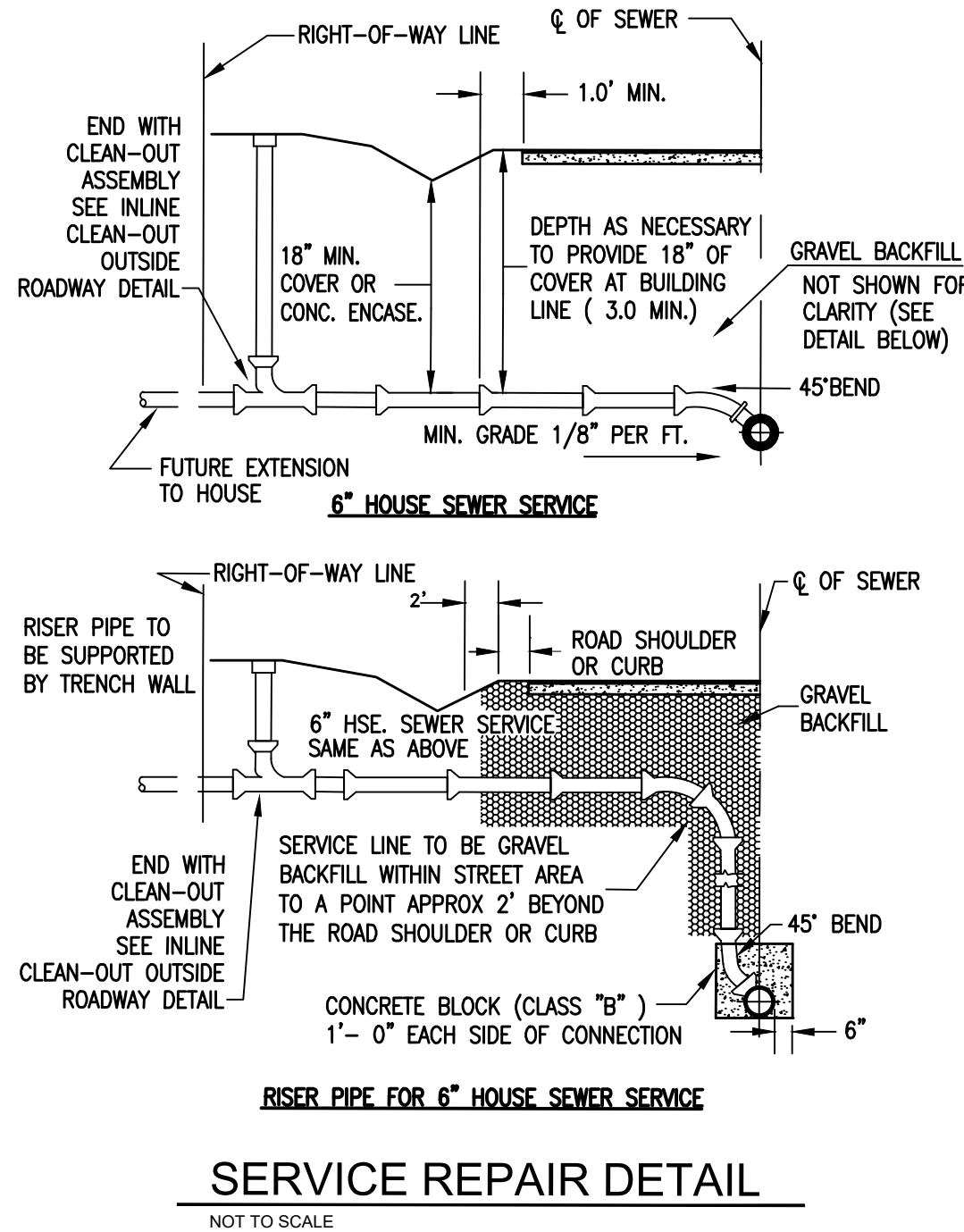
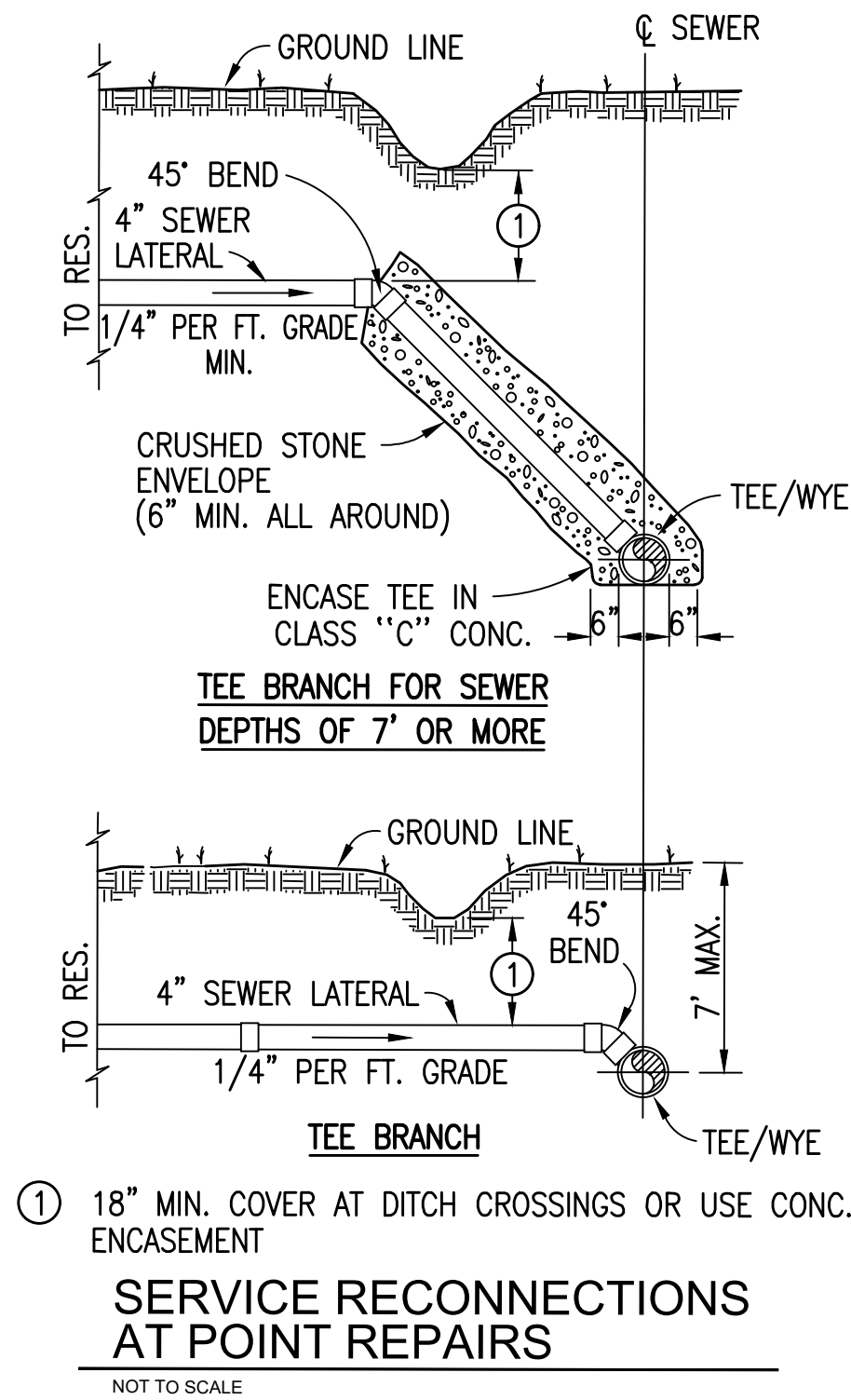


PLOTTED BY: Nazad

PRINTED: 1/28/2025 @ 4:15PM

FILE NAME: G:\3827-Loboville\16-ARP Sewer Rehab\Working Drawings\AutoCAD\3827-16-DTL15.dwg



GRW PROJECT NO. 3827-16

ALL RIGHTS RESERVED. NO PART OF THIS DRAWING OR ANY INFORMATION CONTAINED HEREIN SHALL BE REPRODUCED IN WHOLE OR IN PART WITHOUT THE WRITTEN PERMISSION OF GRW ENGINEERS, INC. AND SHALL NOT BE USED FOR ANY OTHER PROJECT OTHER THAN THIS SPECIFIC PROJECT WITHOUT WRITTEN PERMISSION.

engineering | architecture | geospatial  
 www.grwinc.com

STANDARD REHAB DETAILS CONT.

SANITARY SEWER REHABILITATION  
 CITY OF LOBEVILLE, TENNESSEE

DESIGNED		DRAWN		REVIEWED		APPROVED	
RG		BHH		RG		RG	
NO	DATE						
REVISIONS NO. DESCRIPTION							
SCALE CHECK: _____ THIS MARK SHOULD MEASURE EXACTLY 1" WHEN PLOTTED							

DATE: SEPTEMBER 2024

SCALE: AS NOTED

SHEET NO. RD-10

CONTRACT DRAWINGS