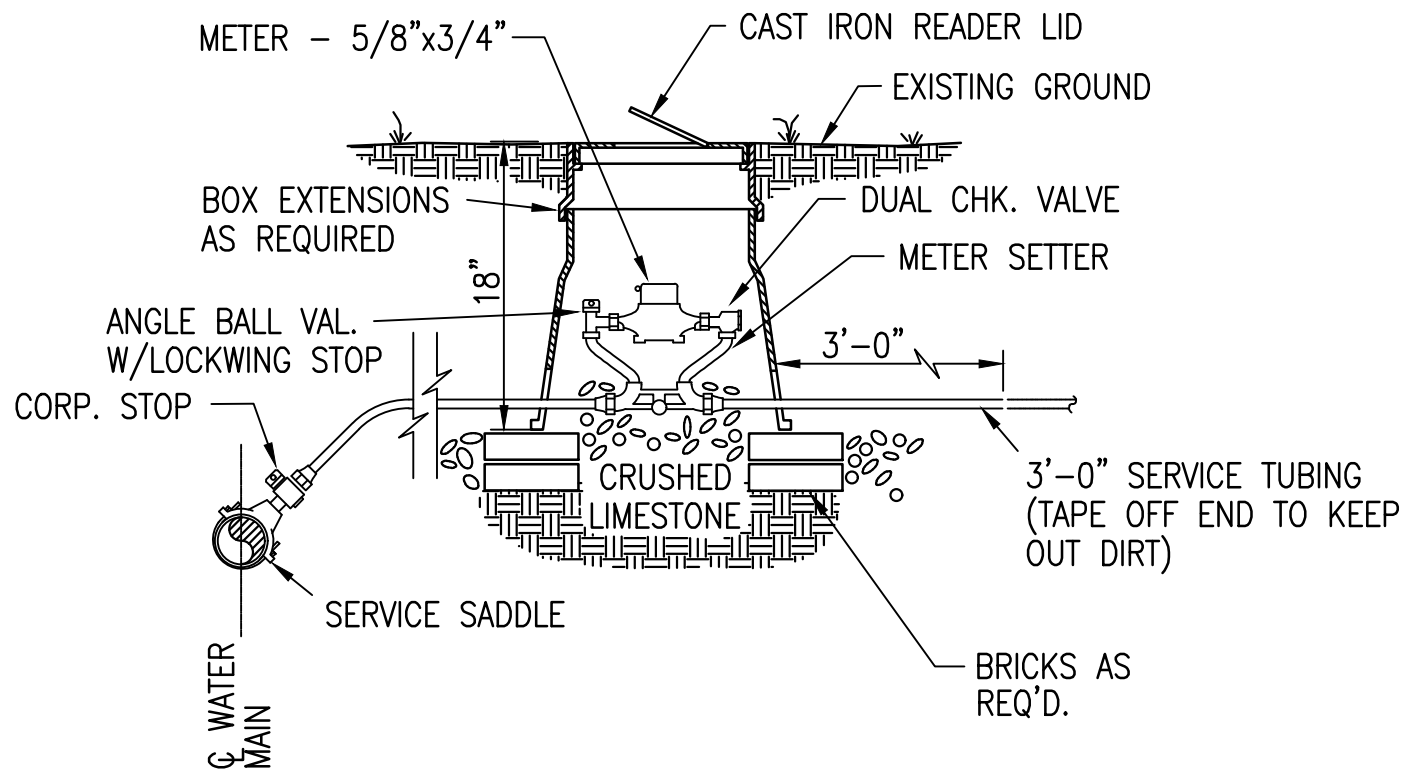


NOTES:

1. STANDARD OBLONG PLASTIC METER BOX
2. METER BOX SHALL BE 24" MINIMUM DEPTH.
3. WHERE PRESSURE REGULATOR IS REQUIRED USE TANDEM SETTER WITH METER BOX SIZED TO FIT.

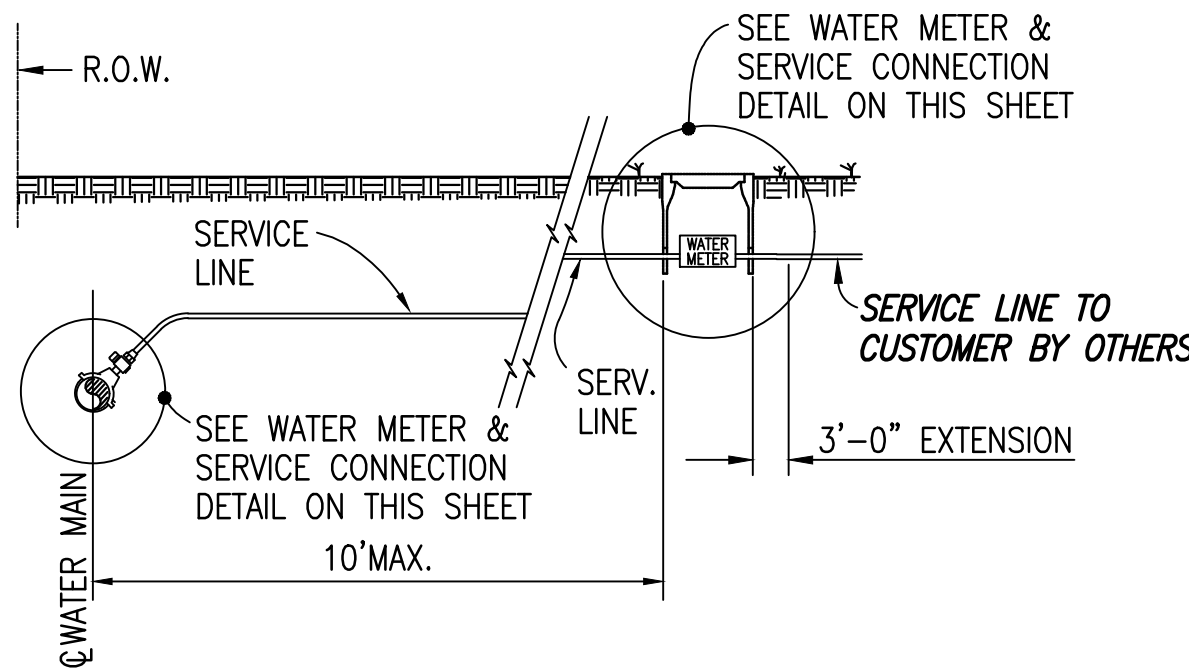


**WATER METER INSTALLATION
AND SERVICE LINE CONNECTION**

NOT TO SCALE

SERVICE CONNECTION NOT UNDER ROADWAY LUMP SUM BID ITEM INCLUDES:

1. METER BOX INSTALLATION AND APPURTENANCES
2. WATER MAIN CONNECTION AND APPURTENANCES



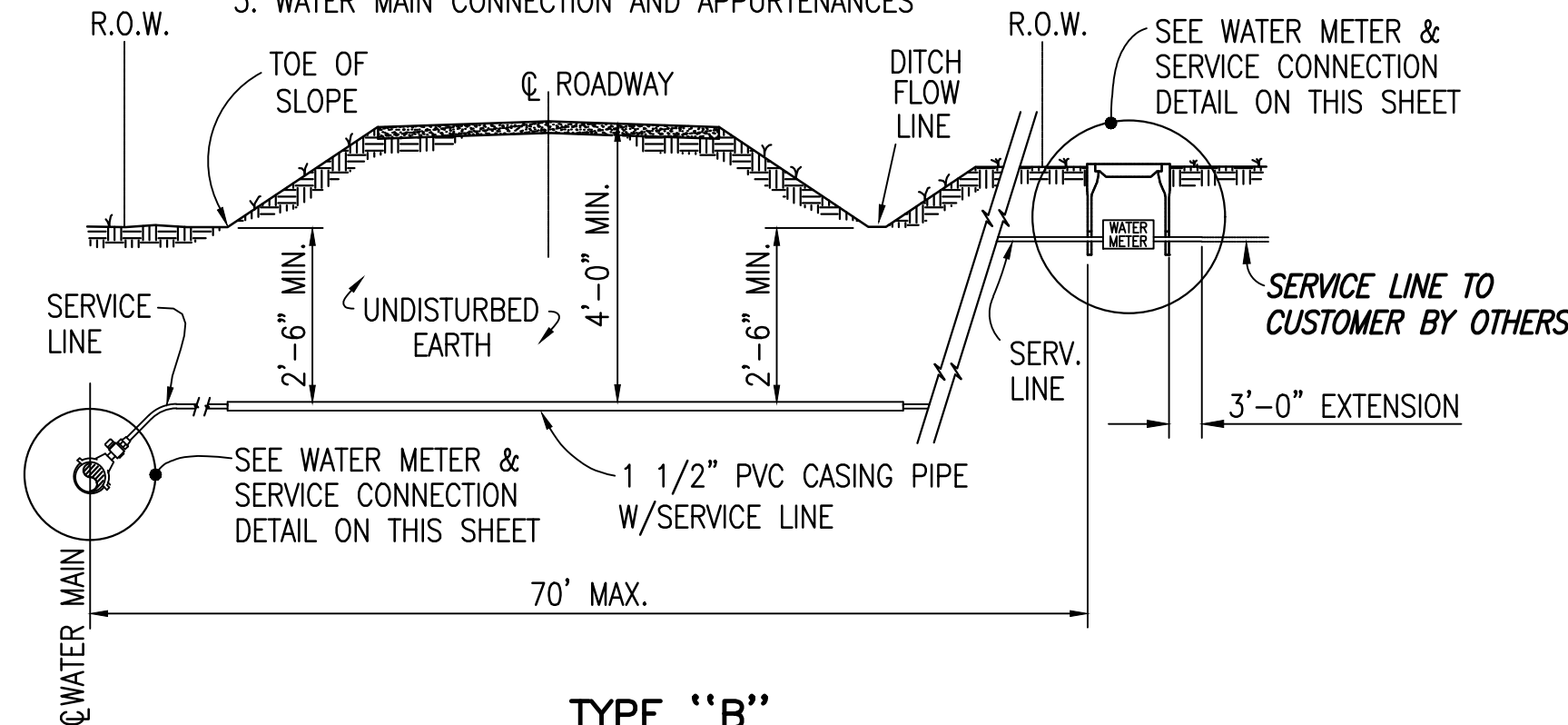
TYPE "A"

SERVICE CONNECTION NOT UNDER ROADWAY

NOT TO SCALE

SERVICE CONNECTION UNDER ROADWAY LUMP SUM BID ITEM INCLUDES:

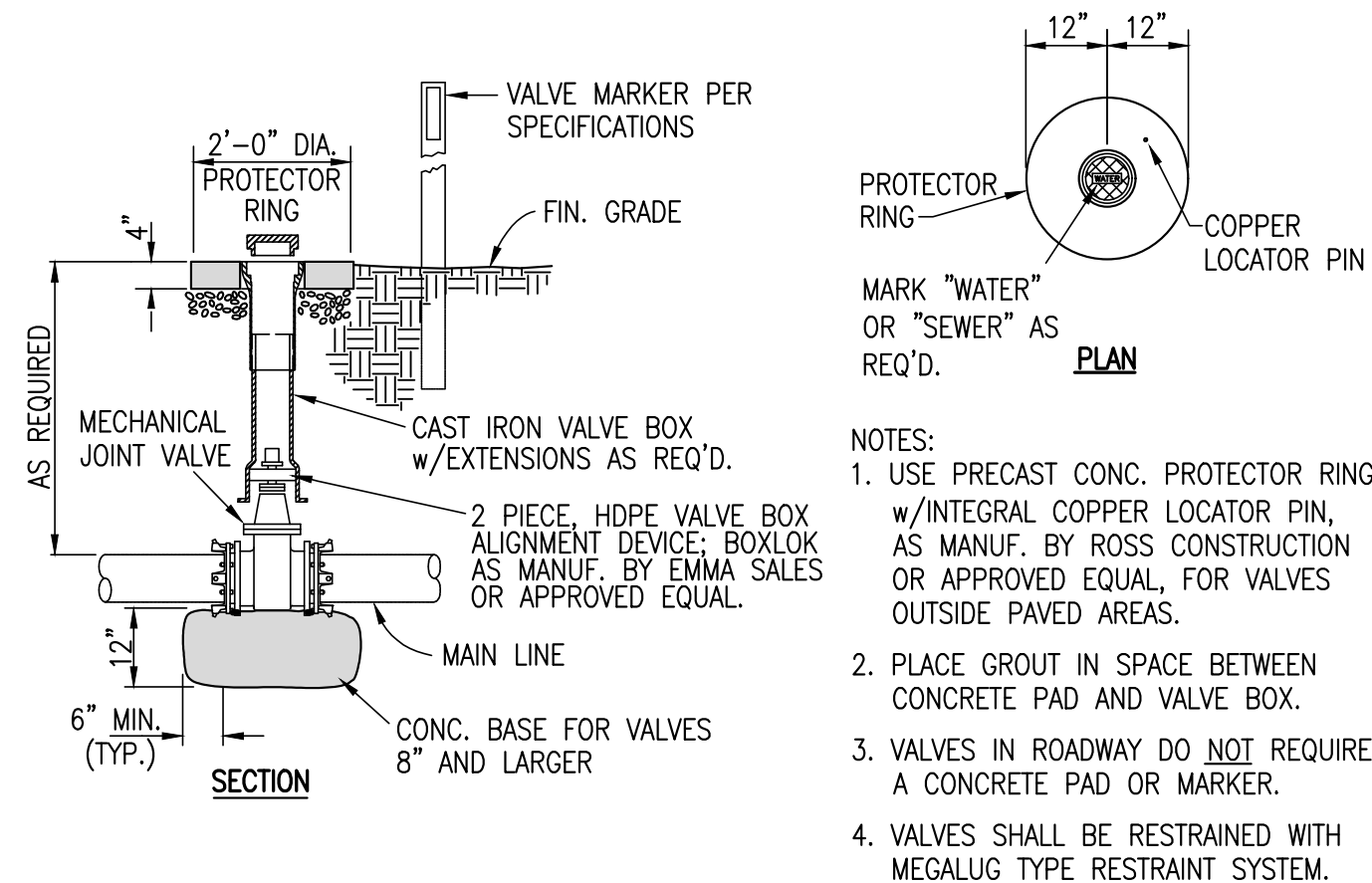
1. METER BOX INSTALLATION AND APPURTENANCES
2. BORE & JACK UNDER ROADWAY W/PVC CASING PIPE AND SERVICE LINE
3. WATER MAIN CONNECTION AND APPURTENANCES



TYPE "B"

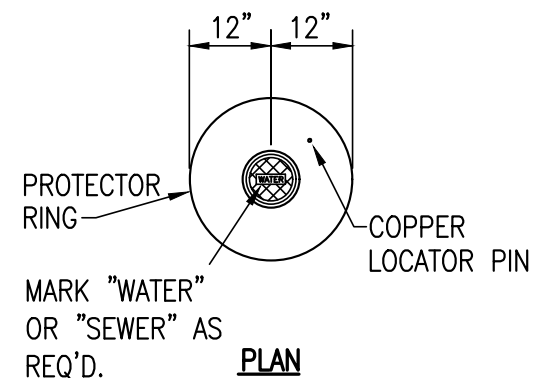
SERVICE CONNECTION UNDER ROADWAY

NOT TO SCALE



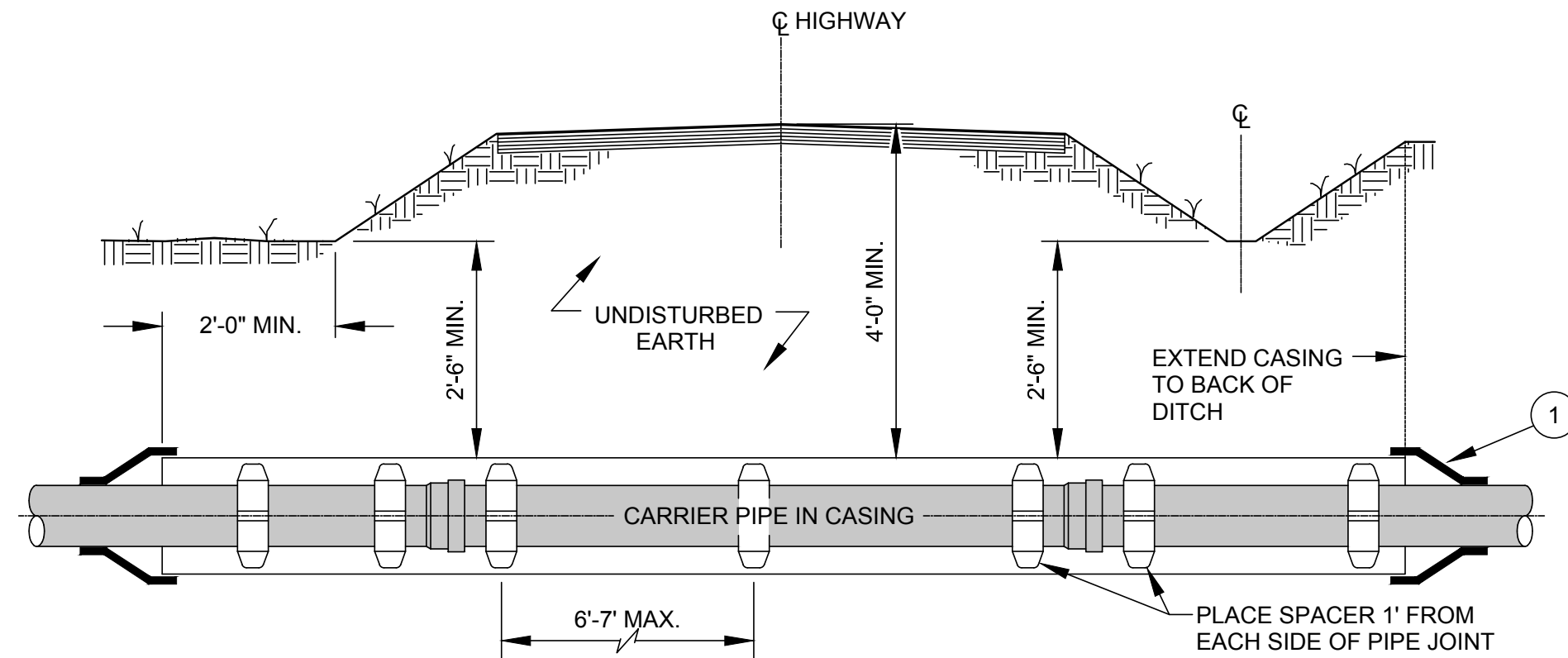
VALVE SETTING DETAIL

NOT TO SCALE



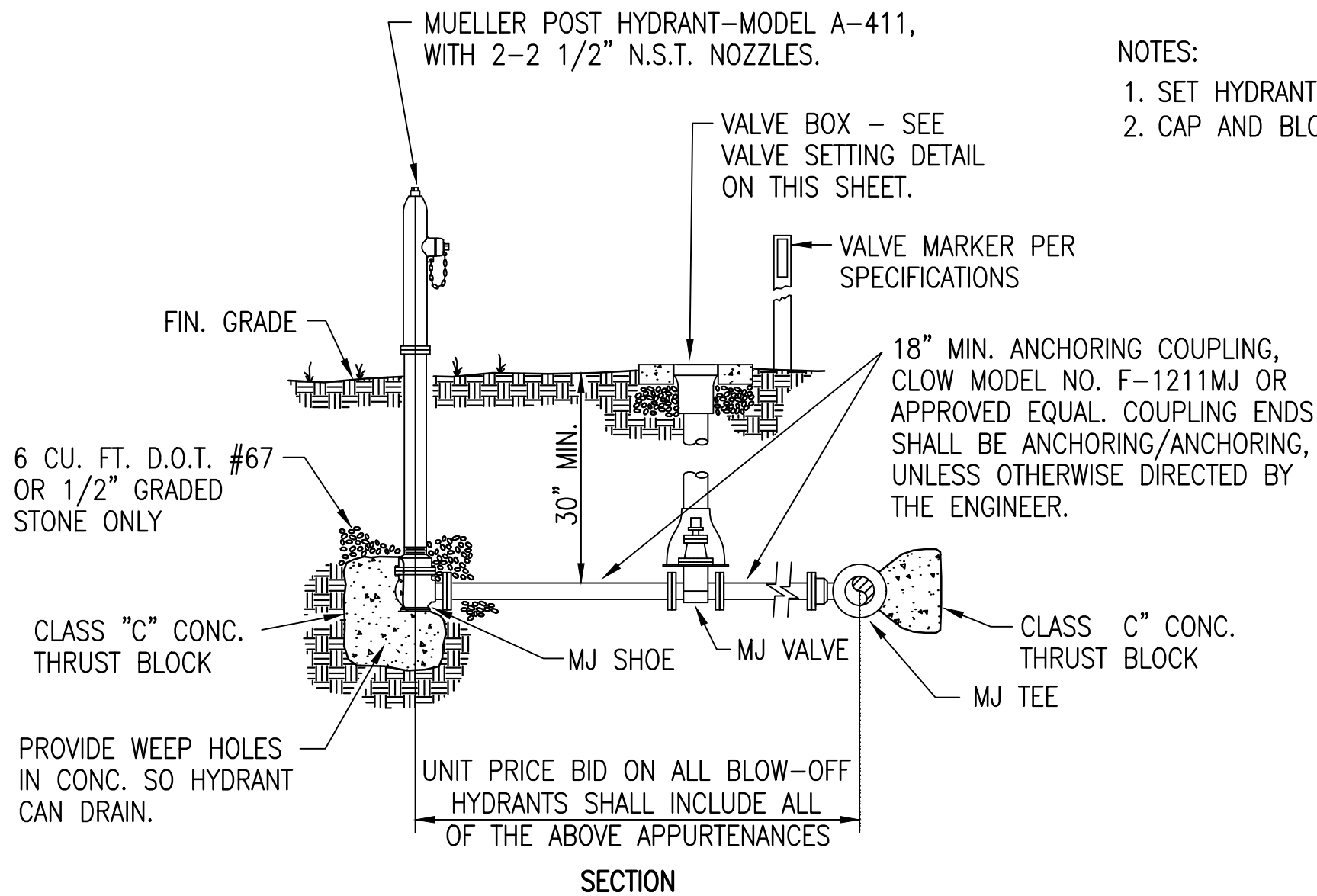
NOTES:

1. USE PRECAST CONC. PROTECTOR RING w/INTEGRAL COPPER LOCATOR PIN, AS MANUF. BY ROSS CONSTRUCTION OR APPROVED EQUAL, FOR VALVES OUTSIDE PAVED AREAS.
2. PLACE GROUT IN SPACE BETWEEN CONCRETE PAD AND VALVE BOX.
3. VALVES IN ROADWAY DO NOT REQUIRE A CONCRETE PAD OR MARKER.
4. VALVES SHALL BE RESTRAINED WITH MEGALUG TYPE RESTRAINT SYSTEM.



**TYPICAL DETAIL OF ROAD CROSSING
W/CASING AND CARRIER PIPE**

NOT TO SCALE

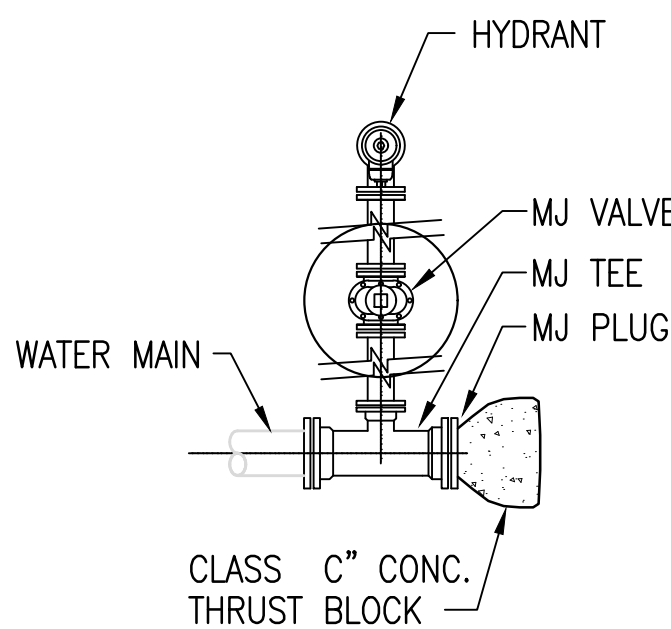


BLOW-OFF HYDRANT INSTALLATION

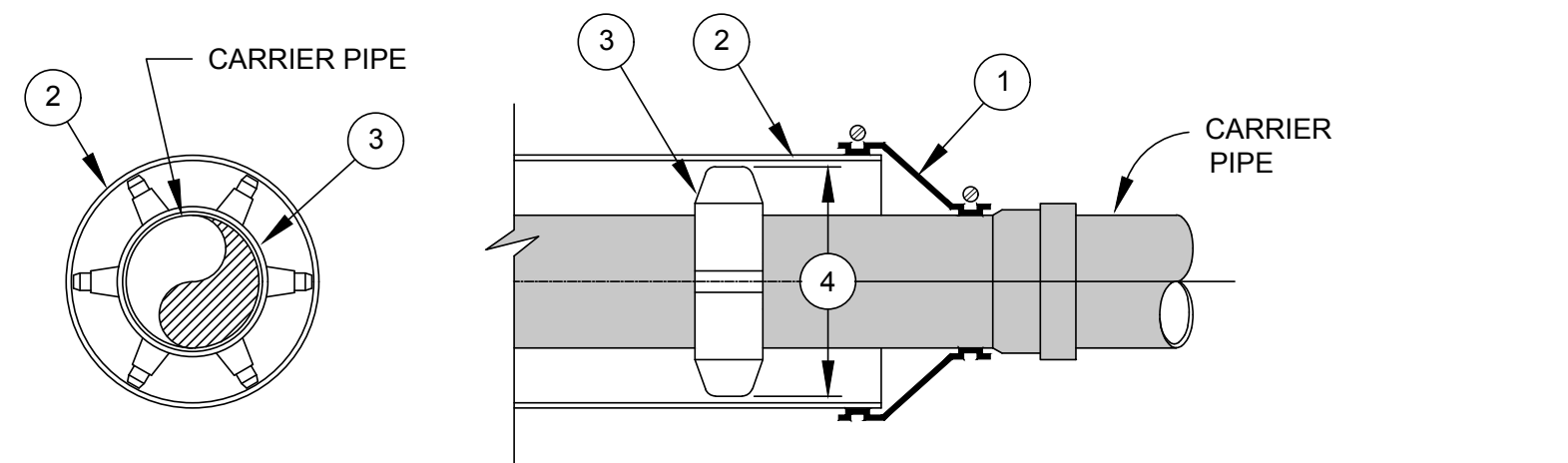
NOT TO SCALE

NOTES:

1. SET HYDRANT 12' TO 15' OFF EDGE OF PAVEMENT (MIN.).
2. CAP AND BLOCK TEE FOR END OF LINE APPLICATIONS.



PLAN - BLOW OFF



- ① USE WATERTIGHT WRAP AROUND END SEALS WITH STAINLESS STEEL BANDS.
- ② ~~SMOOTH WALL STEEL CASING PIPE WITH BITUMINOUS COATING INSIDE & OUT.~~ 4" HDPE (PE 4710 DR 11)
- ③ CASING SPACERS SHALL BE STAINLESS STEEL TYPE INSTALLED IN A CENTERED/RESTRAINED CONFIGURATION. USE PSI MODEL S8G-2, APS MODEL SSIM OR APPROVED EQUAL FOR 4" THRU 24" DIA. CARRIER PIPES. USE PSI MODEL S12G-2, APS MODEL SSIM OR APPROVED EQUAL FOR 26" DIA. AND LARGER CARRIER PIPES.
- ④ SPACER RISERS/RUNNERS SHALL BE SIZED AND TRIMMED TO MAINTAIN 1/2" MAXIMUM CLEARANCE BETWEEN RUNNER AND CASING PIPE.
- ⑤ ~~CARRIER PIPE IN ALL CASING OVER 60 FEET IN LENGTH SHALL BE DUCTILE IRON WITH LOCKING GASKETS.~~

CASING PIPE W/CARRIER PIPE DETAIL

NOT TO SCALE