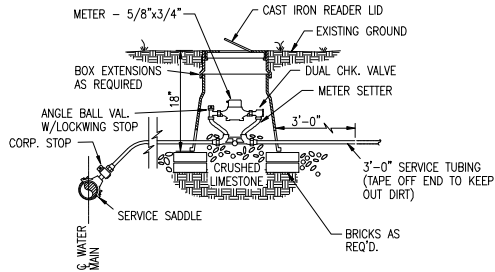


NOTES:

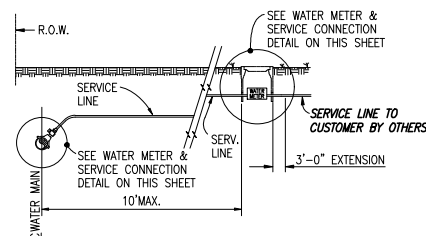
1. STANDARD OBLONG PLASTIC METER BOX
2. METER BOX SHALL BE 24" MINIMUM DEPTH.
3. WHERE PRESSURE REGULATOR IS REQUIRED USE TANDEM SETTER WITH METER BOX SIZED TO FIT.



**WATER METER INSTALLATION
AND SERVICE LINE CONNECTION**
NOT TO SCALE

SERVICE CONNECTION NOT UNDER ROADWAY LUMP SUM BID ITEM INCLUDES:

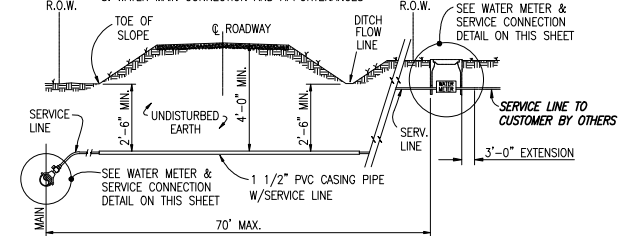
1. METER BOX INSTALLATION AND APPURTENANCES
2. WATER MAIN CONNECTION AND APPURTENANCES



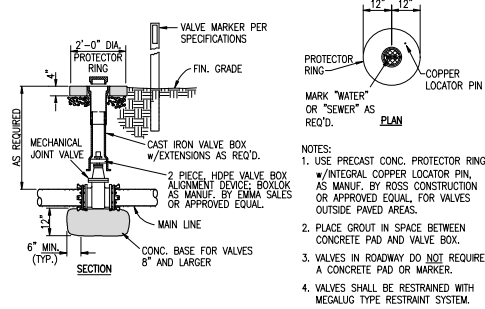
**TYPE "A"
SERVICE CONNECTION NOT UNDER ROADWAY**
NOT TO SCALE

SERVICE CONNECTION UNDER ROADWAY LUMP SUM BID ITEM INCLUDES:

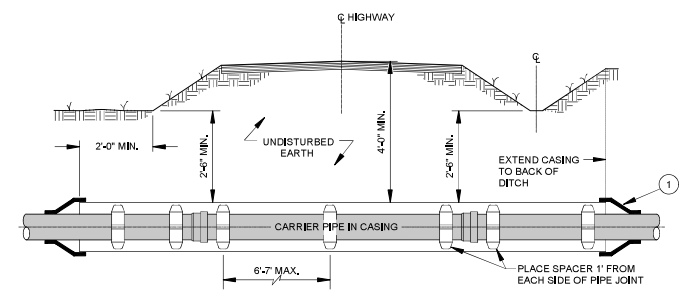
1. METER BOX INSTALLATION AND APPURTENANCES
2. BORE & JACK UNDER ROADWAY W/PVC CASING PIPE AND SERVICE LINE
3. WATER MAIN CONNECTION AND APPURTENANCES



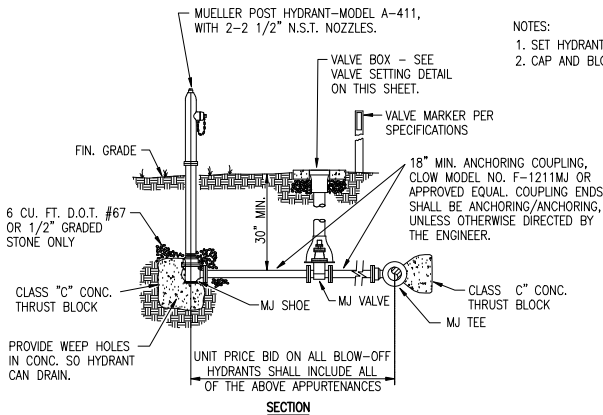
**TYPE "B"
SERVICE CONNECTION UNDER ROADWAY**
NOT TO SCALE



VALVE SETTING DETAIL
NOT TO SCALE



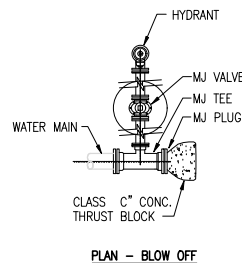
**TYPICAL DETAIL OF ROAD CROSSING
W/CASING AND CARRIER PIPE**
NOT TO SCALE



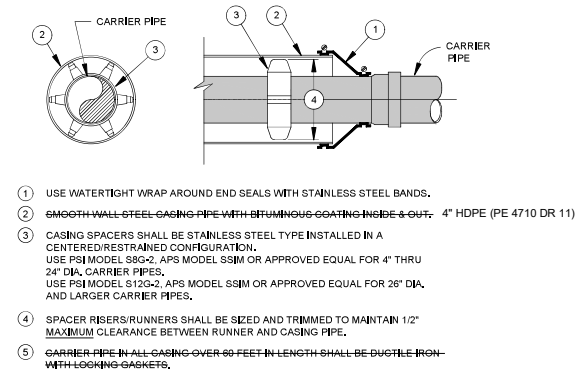
BLOW-OFF HYDRANT INSTALLATION
NOT TO SCALE

NOTES:

1. SET HYDRANT 12' TO 15' OFF EDGE OF PAVEMENT (MIN.).
2. CAP AND BLOCK TEE FOR END OF LINE APPLICATIONS.



PLAN - BLOW OFF



1. USE WATERTIGHT WRAP AROUND END SEALS WITH STAINLESS STEEL BANDS.
2. SMOOTH WALL STEEL CASING PIPE WITH BITUMINOUS COATING INSIDE & OUT. 4" HDPE (PE 4710 DR 11)
3. CASING SPACERS SHALL BE STAINLESS STEEL TYPE INSTALLED IN A CENTERED/RESTRAINED CONFIGURATION.
USE PSI MODEL S8G-2, APS MODEL S3M OR APPROVED EQUAL FOR 4" THRU 24" DIA. CARRIER PIPES.
USE PSI MODEL S12G-2, APS MODEL S3M OR APPROVED EQUAL FOR 26" DIA. AND LARGER CARRIER PIPES.
4. SPACER RISERS/RUNNERS SHALL BE SIZED AND TRIMMED TO MAINTAIN 1/2" MAXIMUM CLEARANCE BETWEEN RUNNER AND CASING PIPE.
5. CARRIER PIPE IN ALL CASING OVER 80 FEET IN LENGTH SHALL BE DUCTILE IRON WITH LOCKING GASKETS.

CASING PIPE W/CARRIER PIPE DETAIL
NOT TO SCALE