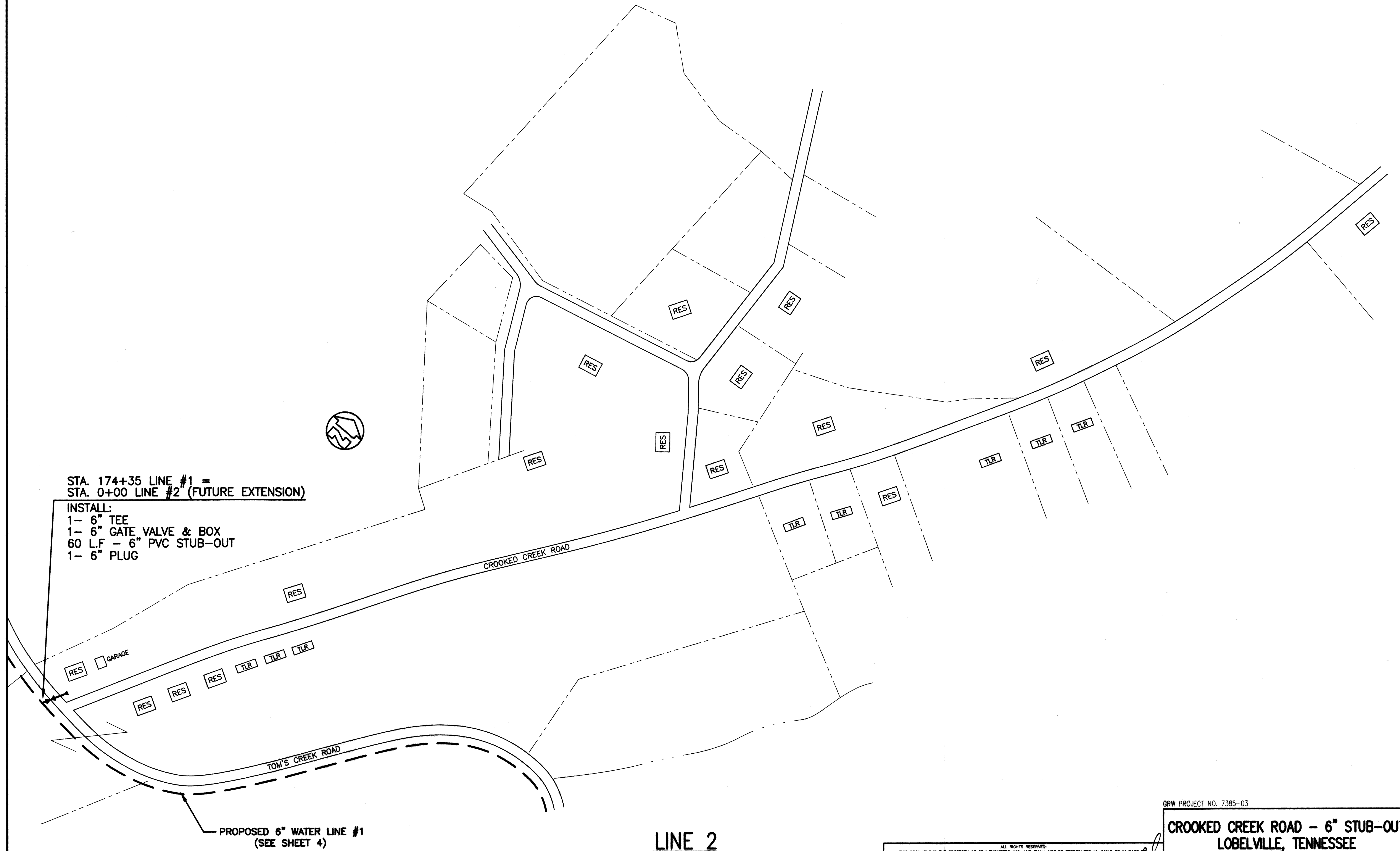


STA. 174+35 LINE #1 =
 STA. 0+00 LINE #2 (FUTURE EXTENSION)

INSTALL:
 1- 6" TEE
 1- 6" GATE VALVE & BOX
 60 L.F. - 6" PVC STUB-OUT
 1- 6" PLUG



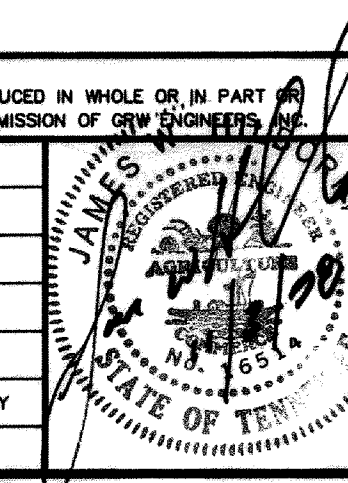
BURIED TELEPHONE CABLE
 TEL. 1-800-351-1111, TN ONE CALL

LINE 2

GRW PROJECT NO. 7385-03

**CROOKED CREEK ROAD - 6" STUB-OUT
 LOBELVILLE, TENNESSEE**

REVISIONS			
NO.	DESCRIPTION	DATE	BY



GRW
 GRW Engineers, Inc.
 Engineers, Architects, Planners
 LEXINGTON LOUISVILLE NASHVILLE INDIANAPOLIS

DESIGNED: KRS	DATE: OCTOBER, 1998
DRAWN: GAM	SCALE: 1" = 100'
REVIEWED: KRS	SHEET NO. C-6
APPROVED: JWH	