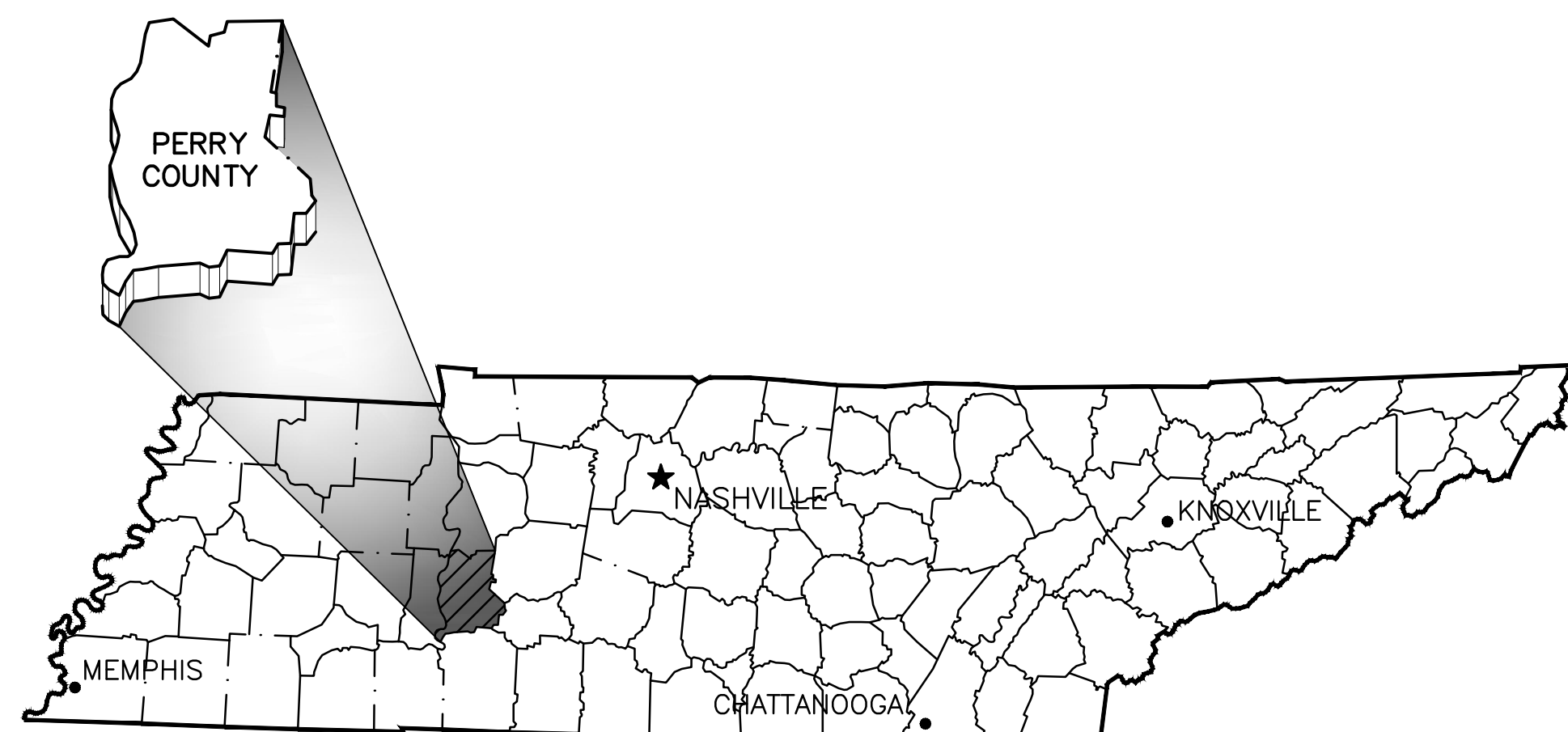


SANITARY SEWER IMPROVEMENTS FOR THE I-40 INDUSTRIAL PARK SITE

INDUSTRIAL DEVELOPMENT BOARD OF PERRY COUNTY, TENNESSEE



TENNESSEE VICINITY MAP
NOT TO SCALE



engineering | architecture | geospatial

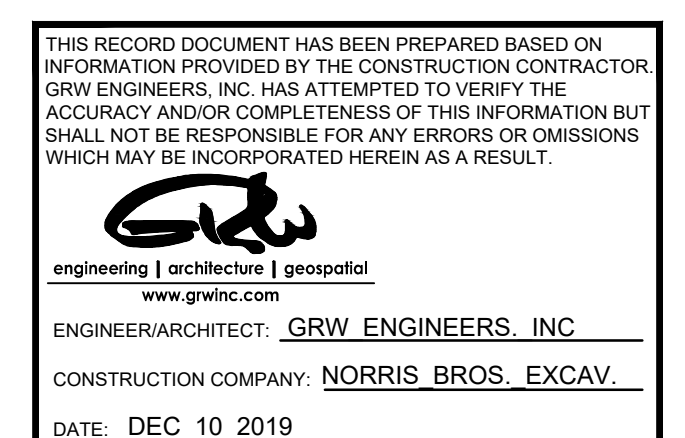
www.grwinc.com

This document, originally
issued, sealed, and signed
by James W. Hillborn,
Tennessee Professional
Engineer, No. 16514, on
Oct. 2018, shall not be used
in lieu of a certified
document.

DWG. NO.

INDEX OF DRAWINGS

G-01	GENERAL NOTES, PROJECT LOCATION MAP, LEGEND AND EROSION SEDIMENT CONTROL NOTES
G-02	SEWAGE FORCE MAIN STANDARD DETAILS
G-03	SEWAGE FORCE MAIN AND GRAVITY STANDARD DETAILS
G-04	SEWAGE PUMP STATION SITE DETAILS - NOT IN THIS CONTRACT
G-05	EROSION CONTROL STANDARD DETAILS
M-1-101	SEWAGE PUMP STATION PLAN AND SECTIONS - NOT IN THIS CONTRACT
M-1-102	SEWAGE PUMP STATION SITE & PIPING PLAN - NOT IN THIS CONTRACT
M-101	8" SEWAGE FORCE MAIN - BEGIN
M-102	8" SEWAGE FORCE MAIN
M-103	8" SEWAGE FORCE MAIN
M-104	8" SEWAGE FORCE MAIN - END OF LINE



OCTOBER 2018

GRW PROJECT NO. 4691-01