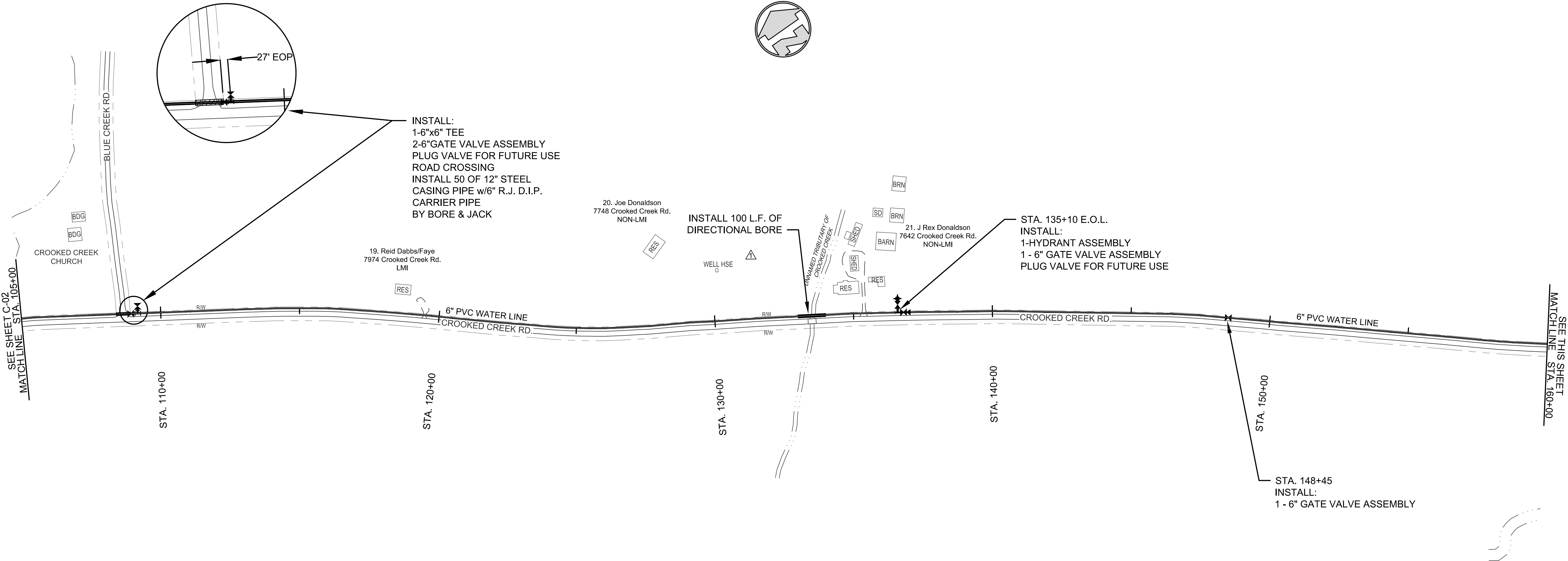


THIS RECORD DOCUMENT HAS BEEN PREPARED BASED ON INFORMATION PROVIDED BY THE CONSTRUCTION CONTRACTOR, GRW ENGINEERS, INC. HAS ATTEMPTED TO VERIFY THE ACCURACY AND/OR COMPLETENESS OF THIS INFORMATION BUT SHALL NOT BE RESPONSIBLE FOR ANY ERRORS OR OMISSIONS WHICH MAY BE INCORPORATED HEREIN AS A RESULT.

GRW
engineering | architecture | geospatial
www.grwinc.com

ENGINEER/ARCHITECT: GRW Engineers, Inc.
HUGHES EXCAVATING, LLC

03/13/2017



REVISIONS		DESIGNED	DATE	BY	BLC
NO.	DESCRIPTION	DATE	DM	DM	DM
1	ADDED DIRECTIONAL BORE	3/12/15	DM	DM	DM
2	ADDED 5,280 L.F. OF WL. ON CROOKED CK.	3/12/15	DM	DM	DM
					BLC
					BLC

SCALE CHECK: _____ THIS MARK SHOULD MEASURE EXACTLY 1" WHEN PLOTTED

CROOKED CREEK RD.
STA. 105+00 TO STA. 188+00 E.O.L.
ROAN & CROOKED CREEK RDS. WATER LINE EXTENSIONS
CDBG CONTRACT NO. 2737
PERRY COUNTY, TENNESSEE

GRW
ENGINEERS - ARCHITECTS - PLANNERS
www.grwinc.com

GRW PROJECT NO. 4349-01

ALL RIGHTS RESERVED. NO PART OF THIS DOCUMENT MAY BE REPRODUCED IN WHOLE OR IN PART WITHOUT THE WRITTEN PERMISSION OF GRW ENGINEERS, INC. AND SHALL NOT BE USED IN ANY OTHER PROJECT OTHER THAN THIS SPECIFIC PROJECT WITHOUT WRITTEN PERMISSION.

This document, originally issued, sealed, and signed by Barry L. Cloyd, Tennessee Professional Engineer, No. 100893, on December 14, 2015, shall not be used in lieu of a certified document.