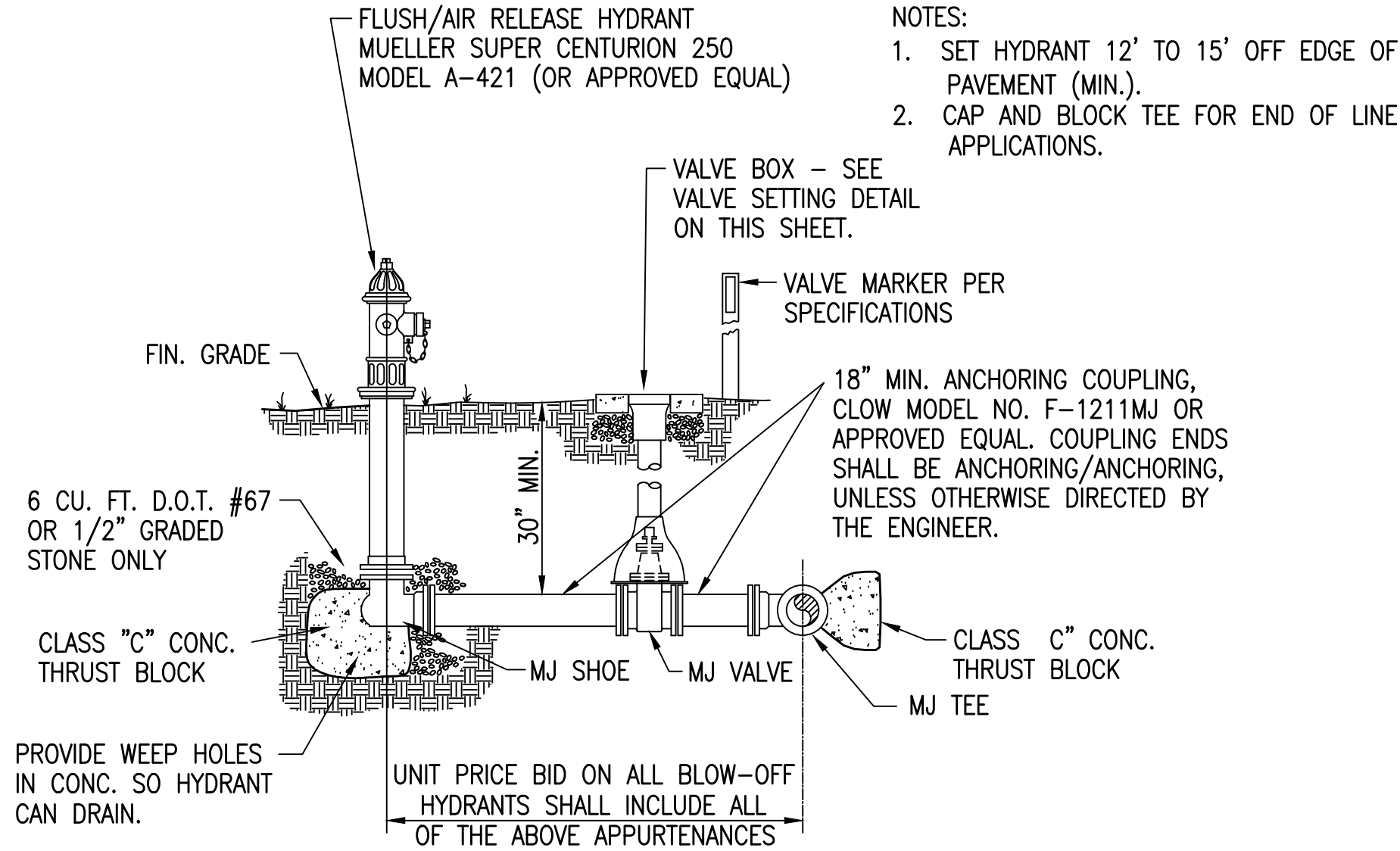


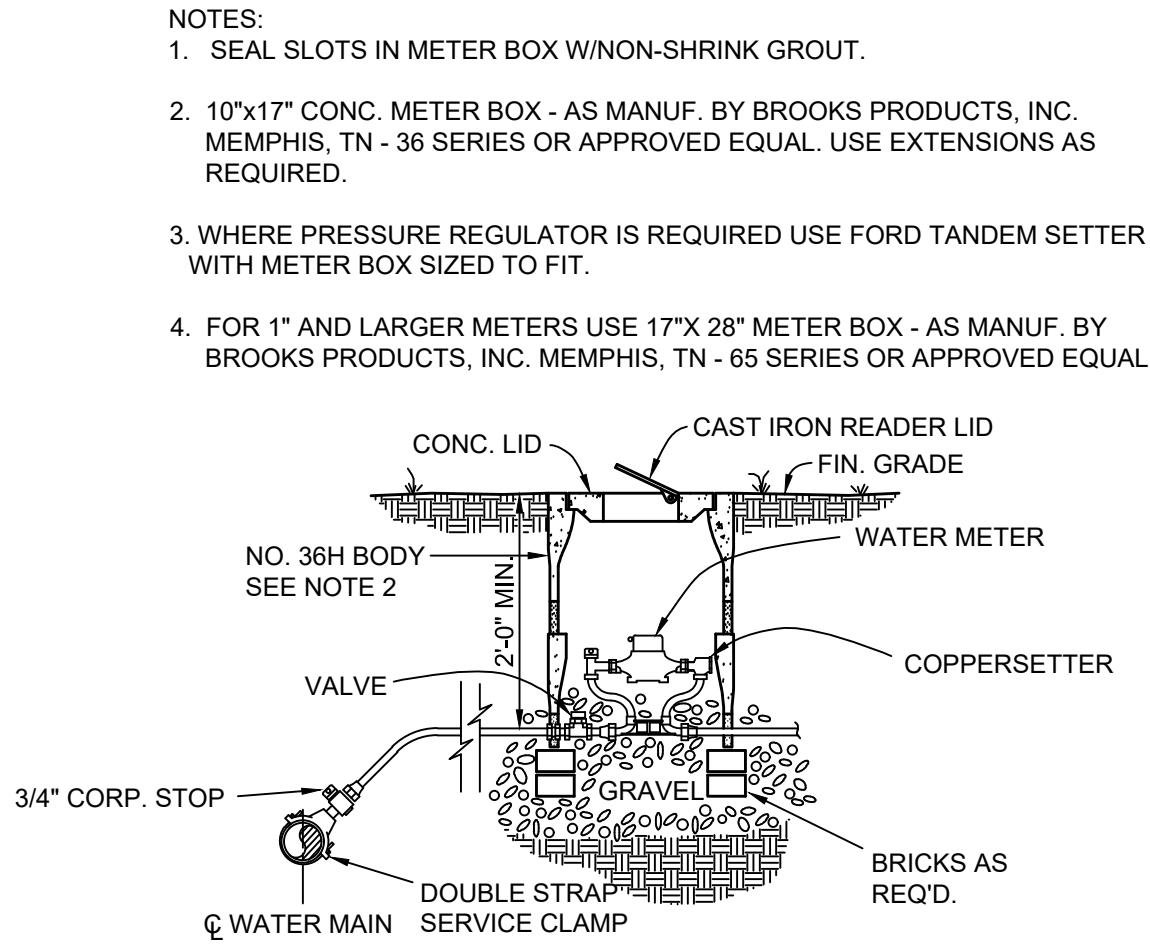
WATER VALVE (ALL SIZES) INSTALLATION

NOT TO SCALE



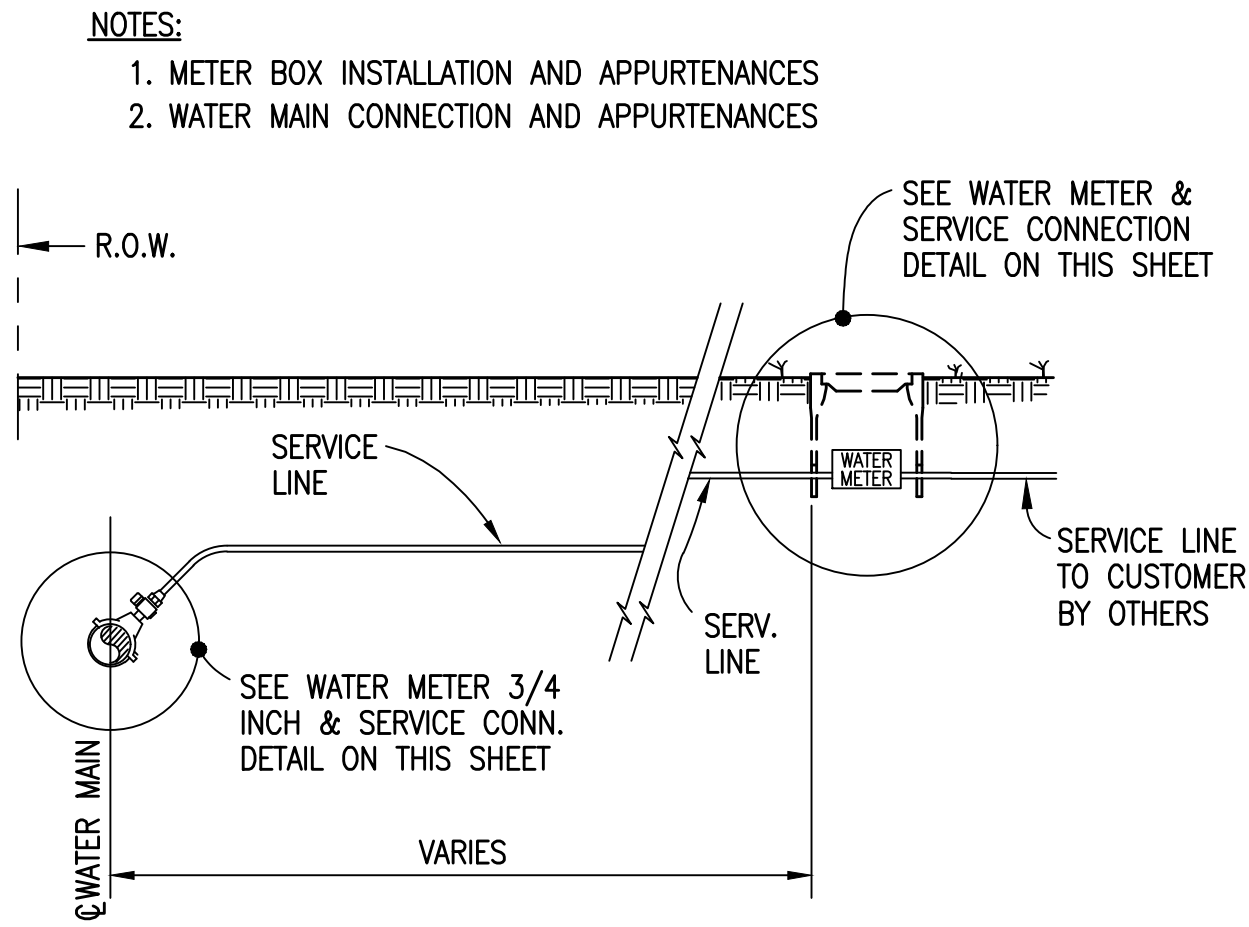
HYDRANT ASSEMBLY

NOT TO SCALE



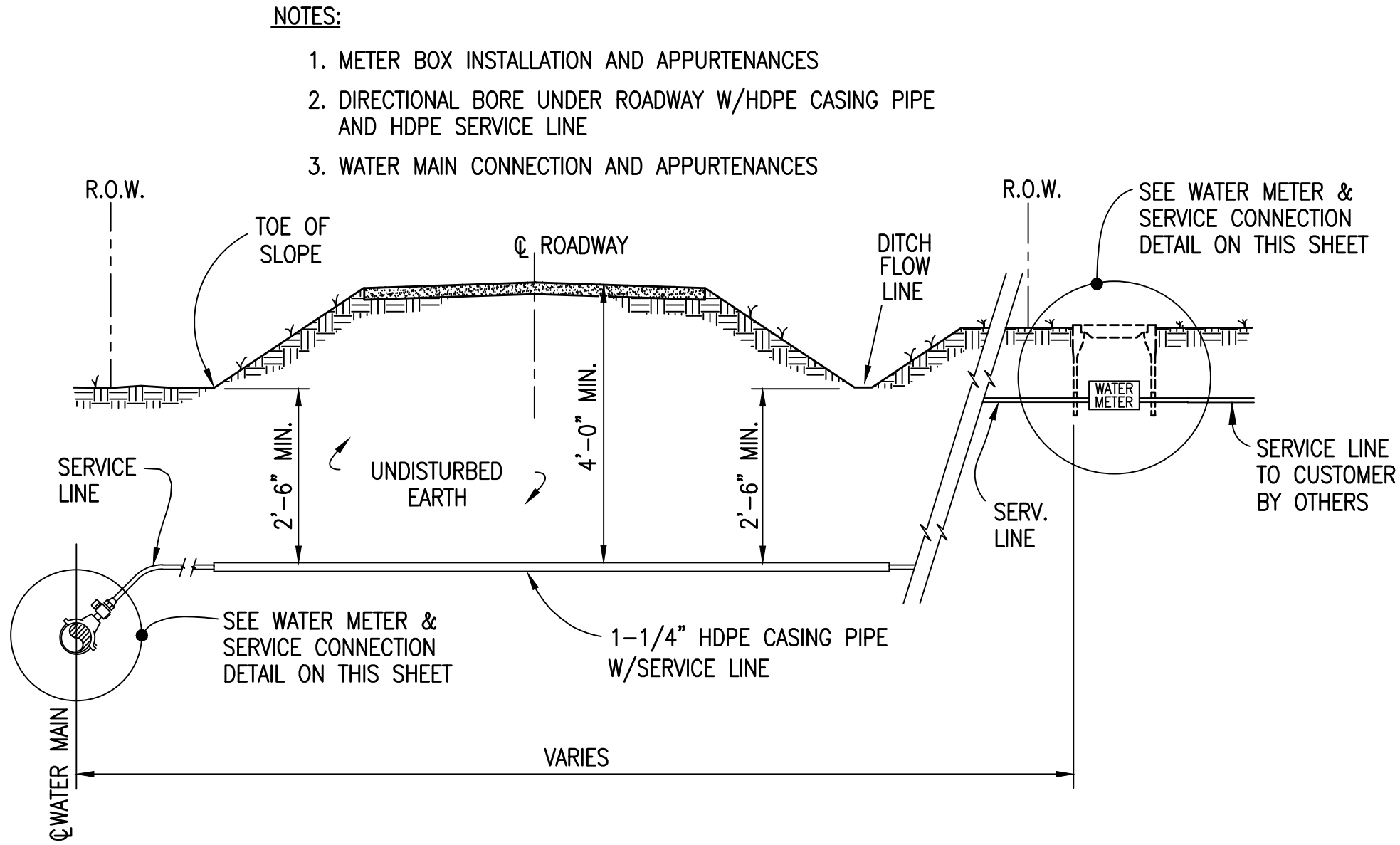
WATER METER - 3/4 INCH W/SERVICE CONNECTION

NOT TO SCALE



TYPE "A" SERVICE CONNECTION – LINE SIDE

NOT TO SCALE



TYPE "B" SERVICE CONNECTION UNDER ROADWAY

NOT TO SCALE

TYPE	YEAR	PROJECT NO.	SHEET NO.
CONST.	2020	68001–3251–14	U2–16

S.R. 13

PERRY CO.

DRAWING SCALE CHECK:	THIS MARK SHOULD MEASURE EXACTLY 1" WHEN PLOTTED
ALL RIGHTS RESERVED: THIS DOCUMENT IS THE PROPERTY OF GRW ENGINEERS, INC. AND SHALL NOT BE REPRODUCED IN WHOLE OR IN PART OR USED FOR CONSTRUCTION OF OTHER THAN THIS SPECIFIC PROJECT WITHOUT WRITTEN PERMISSION OF GRW ENGINEERS, INC.	
DESIGNED: JWH	DATE: JULY 2019
DRAWN: DM	REVISION DATE:
REVIEWED: JWH	SCALE: 1" = 50'
APPROVED: JWH	PROJECT NO. 3827–09



CITY OF LOBELEVILLE
S.R. 13 WATER RELOCATIONS

WATER
RELOCATIONS
STANDARD WATER LINE
CONSTRUCTION DETAILS
NOT TO SCALE

engineering | architecture | geospatial

www.grwinc.com

THIS RECORD DOCUMENT HAS BEEN PREPARED BASED ON INFORMATION PROVIDED BY THE CONSTRUCTION CONTRACTOR. GRW ENGINEERS, INC. HAS ATTEMPTED TO VERIFY THE ACCURACY AND/OR COMPLETENESS OF THIS INFORMATION BUT SHALL NOT BE RESPONSIBLE FOR ANY ERRORS OR OMISSIONS WHICH MAY BE INCORPORATED HEREIN AS A RESULT.

ENGINEER/ARCHITECT: JAMES W. HILBORN, IV

CONSTRUCTION COMPANY: MARBURY CONSTRUCTION, LLC

DATE: 7/14/2021

This document, originally issued, sealed and signed by James W. Hilborn, IV, Tennessee Professional Engineer No. 16514, on July 11, 2019, shall not be used in lieu of a certified document.

PRINTED: 7/15/2021 @ 7:47AM
FILE NAME: G:\3827-Lobelville\09-SR 13 Reloc\Working Drawings\Lobelville Funded\AutoCAD\3827-09-1345_U2-15-16 DTLS.dwg