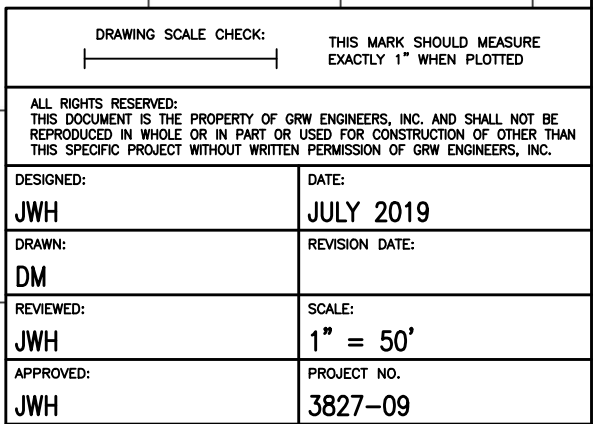


TYPE	YEAR	PROJECT NO.	SHEET NO.
CONST.	2020	68001-3251-14	U2-9B



engineering | architecture | geospatial

[www.grwinc.com](http://www.grwinc.com)

This document, originally issued, sealed and signed by James W. Hilborn, IV, Tennessee Professional Engineer No. 16514, on July 11, 2019, shall not be used in lieu of a certified document.

CITY OF LOBELVILLE  
S.R. 13 WATER RELOCATIONS

# WATER RELOCATIONS

BEGIN: STA. 422+50 TO  
END: STA. 424+50