

POINT	NORTHING	EASTING	ELEVATION	STATION	OFFSET	DESCRIPTION
CP-S54	546091.0285	1439963.7748	434.17	902+02.64	16.71' RT.	68-13-54
CP-S55	546653.4898	1439741.8331	449.02	908+06.13	20.93' LT.	68-13-55

68001-2251-14
BEGIN PROJ. NO. STP-13(45)
STA. 903+95.00 (R.O.W.)

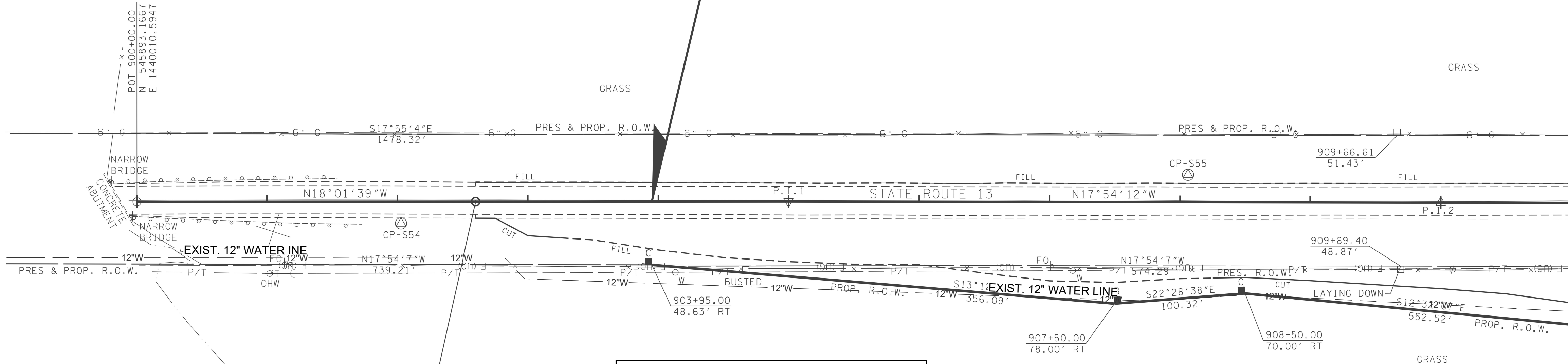
119
BENTON HICKERSON

P.I. 1
P.I. STA. 905+00.00
N 546,368.6210
E 1,439,855.8589
Δ 0°07'27" (RT.)

910

905

900



BEG. CONSTRUCTION
STA. 902+60 S.R. 13
N 546140.4029
E 1439930.1321

119
BENTON HICKERSON

P.I. 2
P.I. STA. 910+00.00
N 546,844.4092
E 1,439,702.1527
Δ 0°02'40" (LT.)

THIS RECORD DOCUMENT HAS BEEN PREPARED BASED ON INFORMATION PROVIDED BY THE CONSTRUCTION CONTRACTOR, GRW ENGINEERS, INC. HAS ATTEMPTED TO VERIFY THE ACCURACY AND/OR COMPLETENESS OF THIS INFORMATION BUT SHALL NOT BE RESPONSIBLE FOR ANY ERRORS OR OMISSIONS WHICH MAY BE INCORPORATED HEREIN AS A RESULT.

GRW
engineering | architecture | geospatial
www.grwinc.com

ENGINEER/ARCHITECT: JAMES W. HILBORN, IV
CONSTRUCTION COMPANY: MARBURY CONSTRUCTION, LLC
DATE: 7/14/2021

TYPE	YEAR	PROJECT NO.	SHEET NO.
CONST.	2020	68001-3251-14	U2-6

S.R. 13 PERRY CO.

DRAWING SCALE CHECK: THIS MARK SHOULD MEASURE EXACTLY 1" WHEN PLOTTED	
ALL RIGHTS RESERVED: THIS DOCUMENT IS THE PROPERTY OF GRW ENGINEERS, INC. AND SHALL NOT BE REPRODUCED IN WHOLE OR IN PART OR USED FOR CONSTRUCTION OF OTHER THAN THIS SPECIFIC PROJECT WITHOUT WRITTEN PERMISSION OF GRW ENGINEERS, INC.	
DESIGNED: JWH	DATE: JULY 2019
DRAWN: DM	REVISION DATE:
REVIEWED: JWH	SCALE: 1" = 50'
APPROVED: JWH	PROJECT NO. 3827-09

GRW
engineering | architecture | geospatial
www.grwinc.com



CITY OF LOBELVILLE
S.R. 13 WATER RELOCATIONS

WATER
RELOCATIONS
STA. 900+00 TO 911+00

SCALE: 1" = 50'

This document, originally issued, sealed and signed by James W. Hilborn, IV, Tennessee Professional Engineer No. 16514, on July 11, 2019, shall not be used in lieu of a certified document.