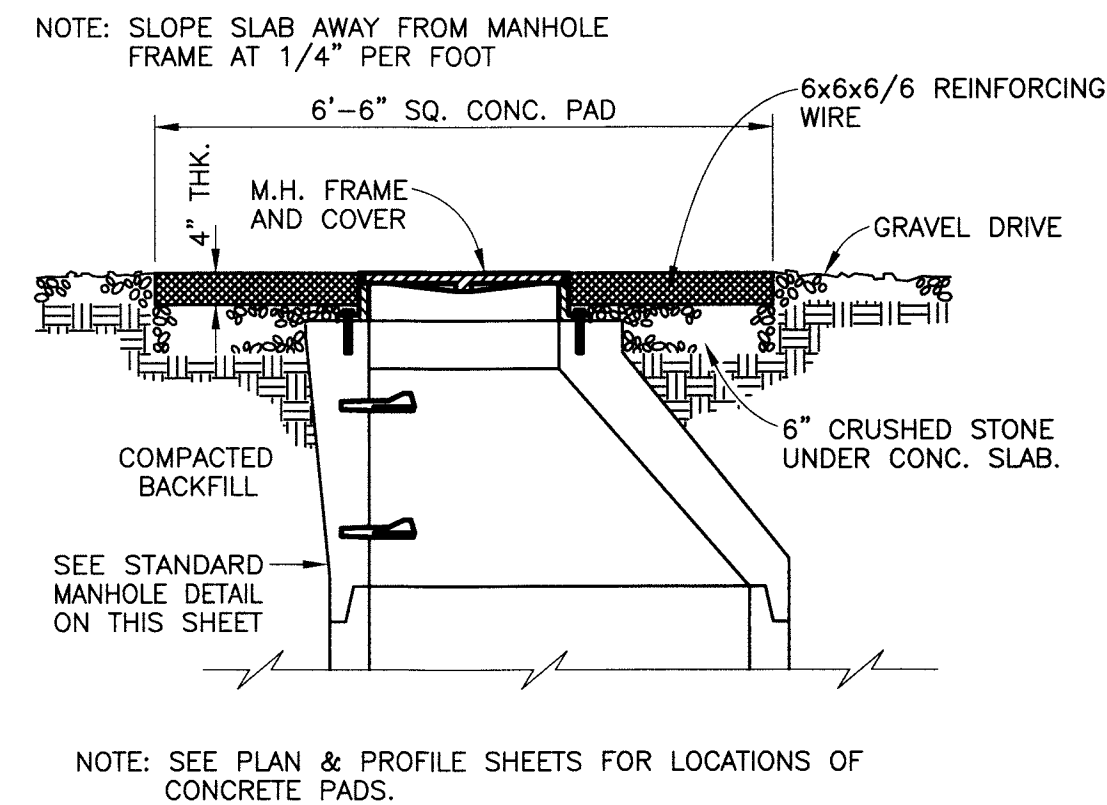
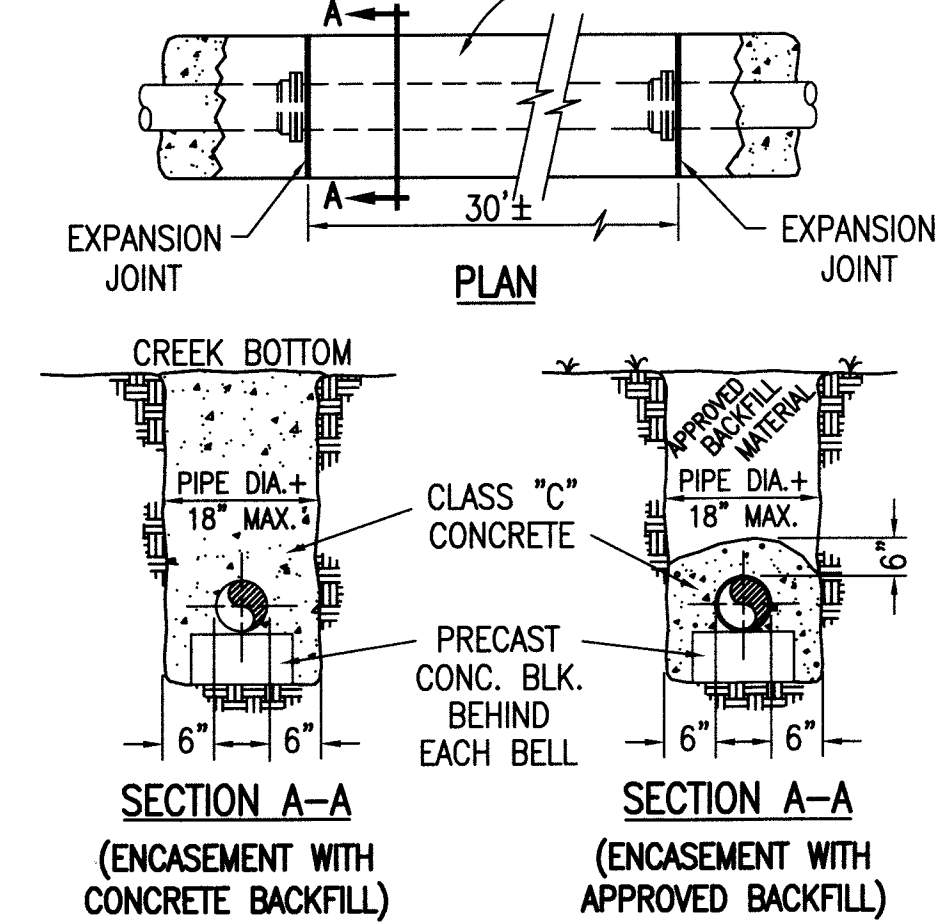


FILE NAME: G:\3827-Lobelville\08-SS Rehab\Working Drawings\AutoCAD\3827-08-C-06.dwg



1. FOR ENCASEMENT OVER 30' LONG PLACE 3/4" FIBERBOARD EXPANSION JOINT AT PIPE JOINTS BETWEEN POURS APPROX. EVERY 30'.
2. CONCRETE -  $f'c = 2,500$  psi  
CLASS "C" CONC.



CONCRETE PAD @ MANHOLES  
IN GRAVEL DRIVE  
NOT TO SCALE

2'-0" SQ. CONC. PAD W/6X6X6/6 WIRE

RECESSED BRASS PLUG

4" 45° BEND

4" WYE

4" SEWER LATERAL

TO TEE BRANCH

TO RES. OR STUB-OUT

45° BEND

4" SEWER LATERAL

1/4" PER FT. GRADE MIN.

CRUSHED STONE ENVELOPE (6" MIN. ALL AROUND)

ENCASE TEE IN CLASS "C" CONC.

6'-1" 6'-1"

GROUND LINE

4" SEWER LATERAL

6"

1/4" PER FT. GRADE

TO TEE BRANCH

EXTEND TO R.O.W./PL (FROM TEE BRANCH)

GROUND LINE

4" SEWER LATERAL

6"

1/4" PER FT. GRADE

TO TEE BRANCH

NON-L.M.I. SERVICE STUB OUT

GROUND LINE

4" SEWER LATERAL

6"

1/4" PER FT. GRADE

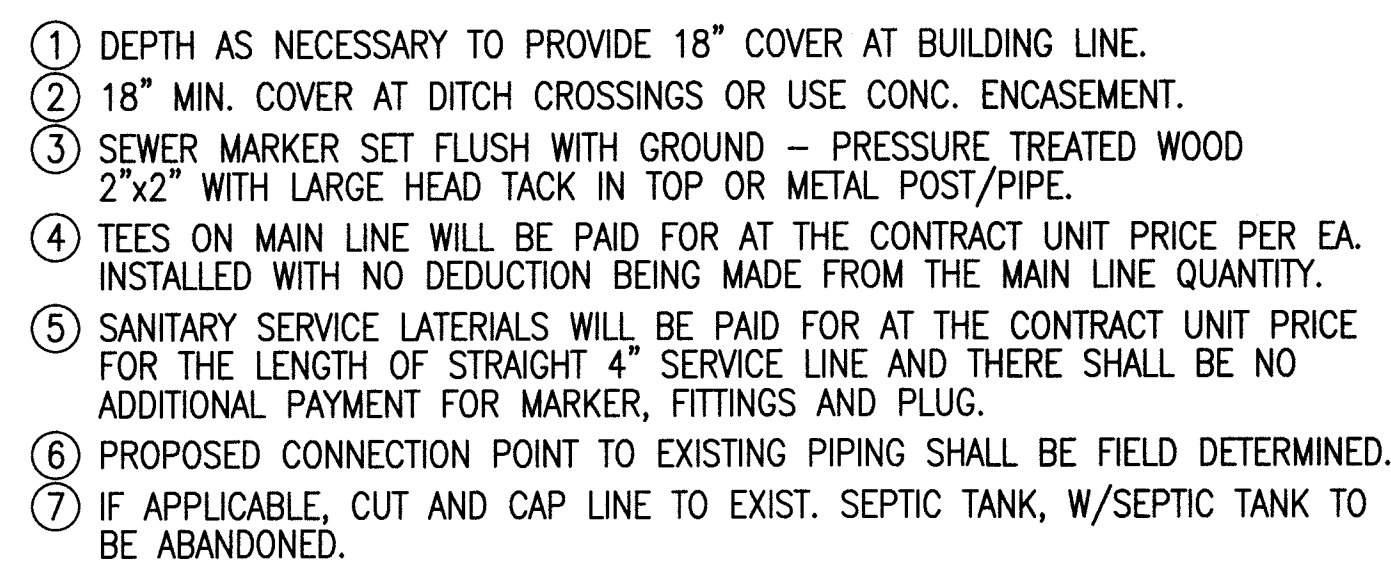
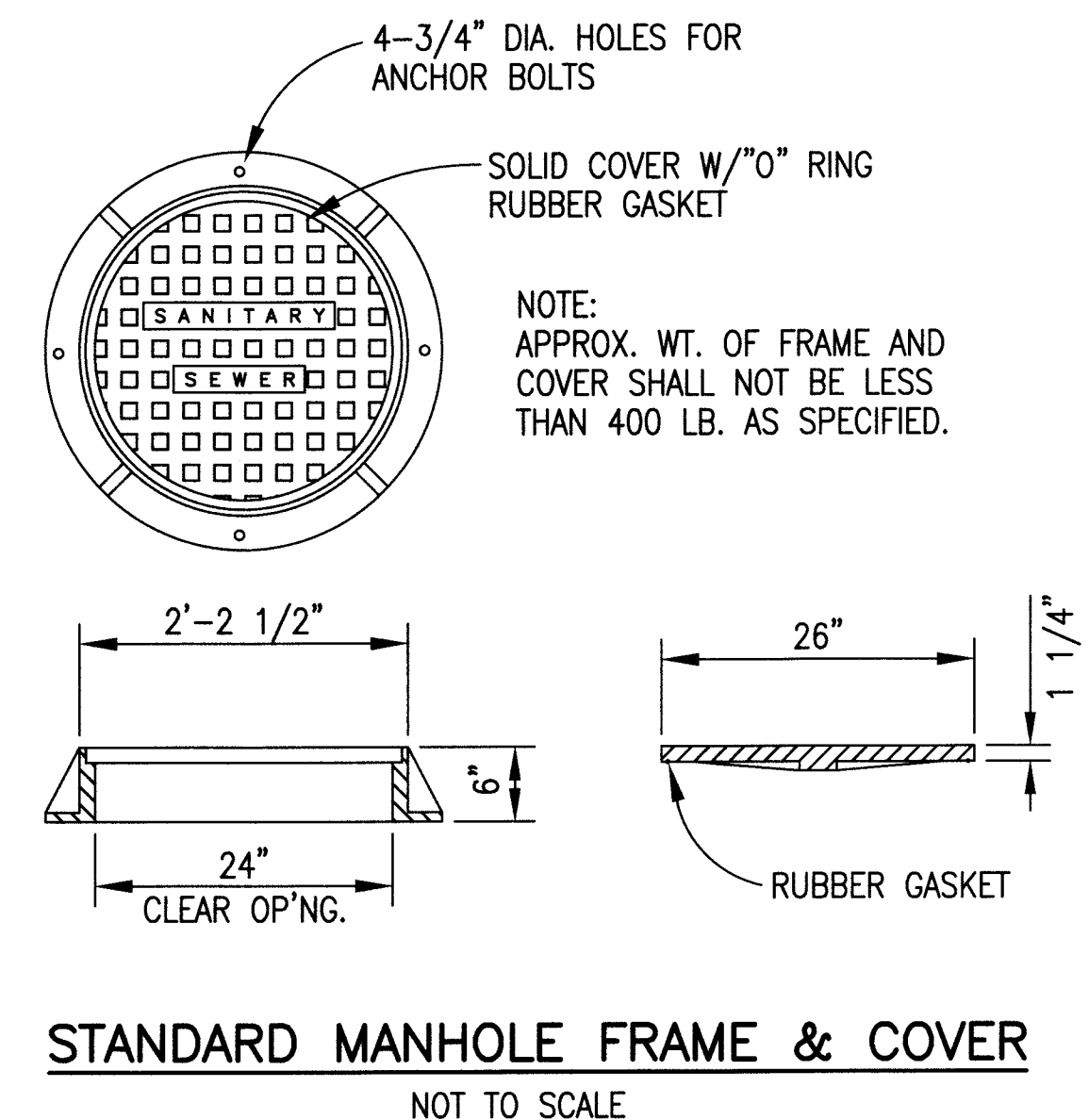
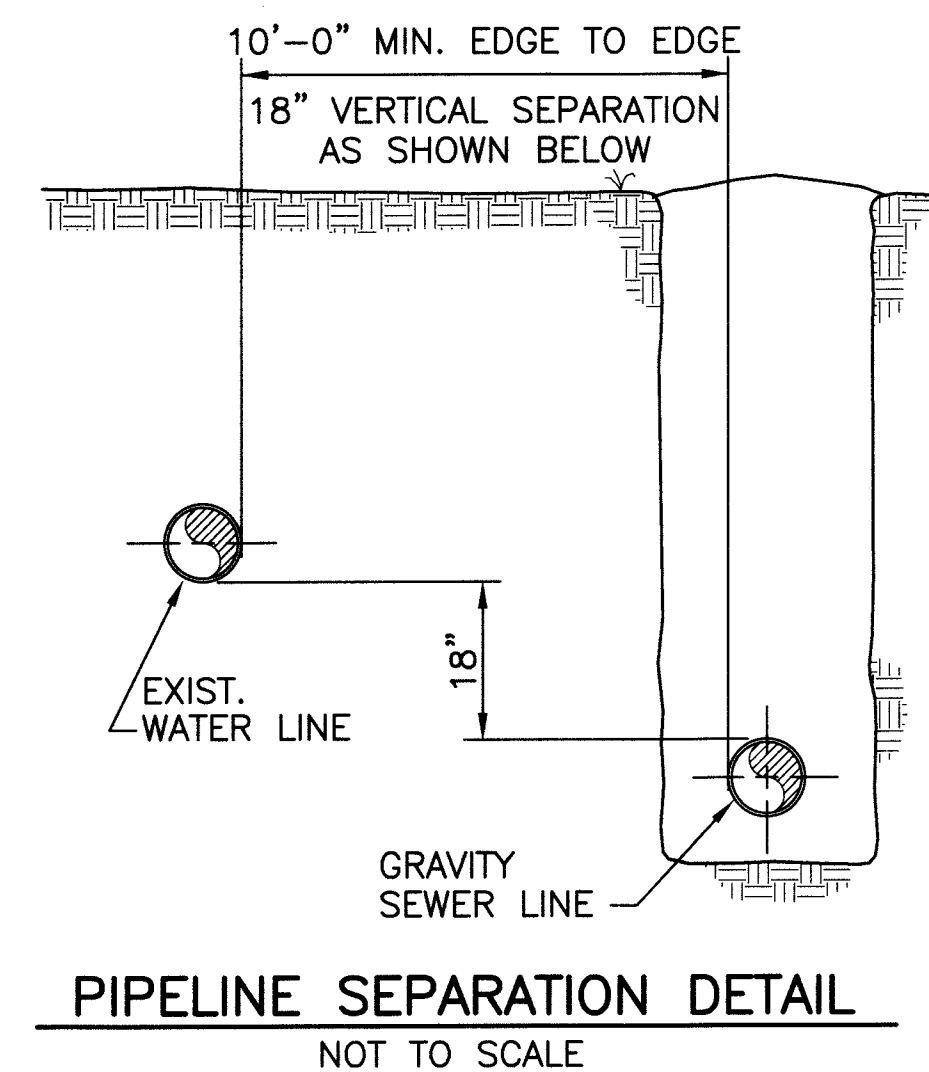
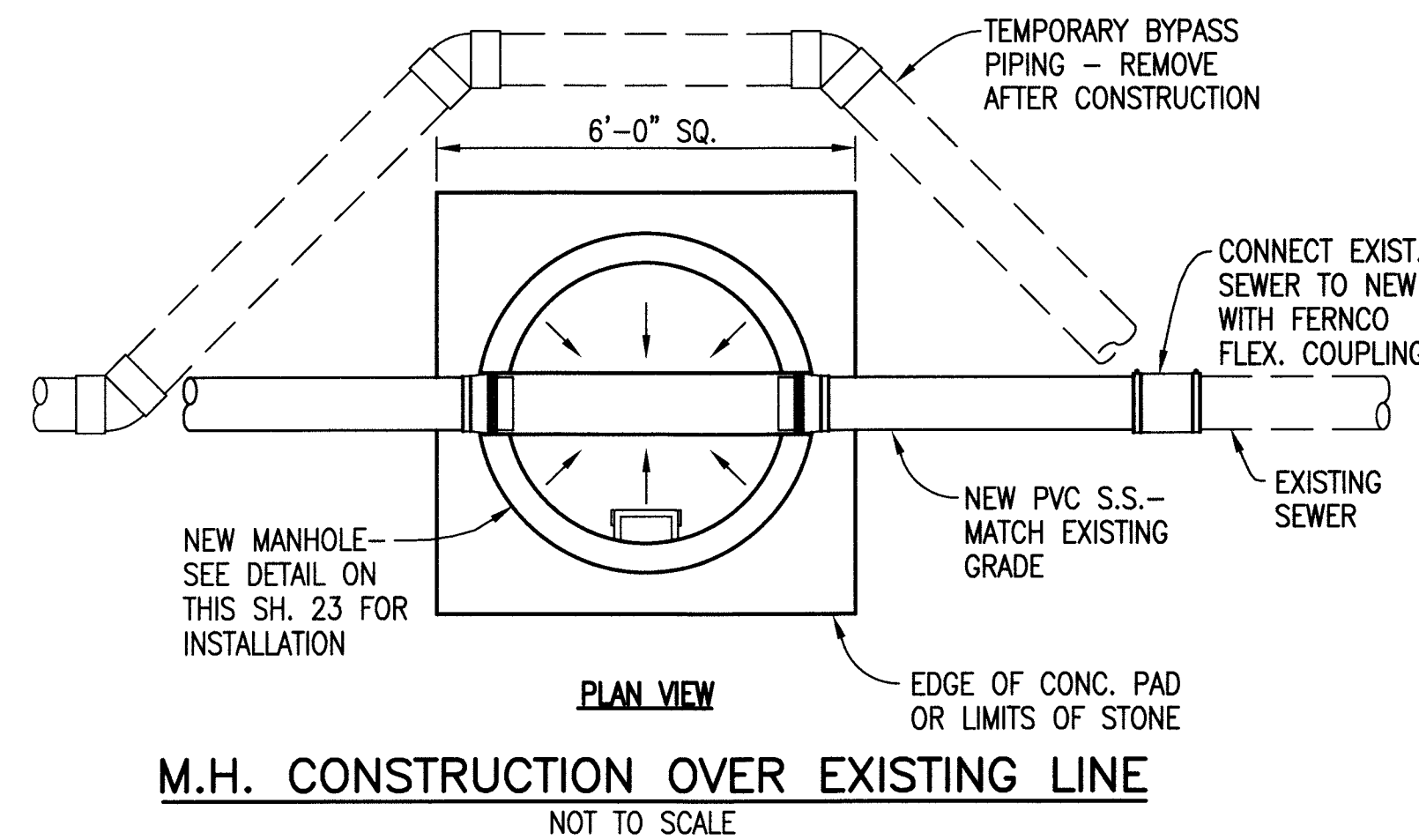
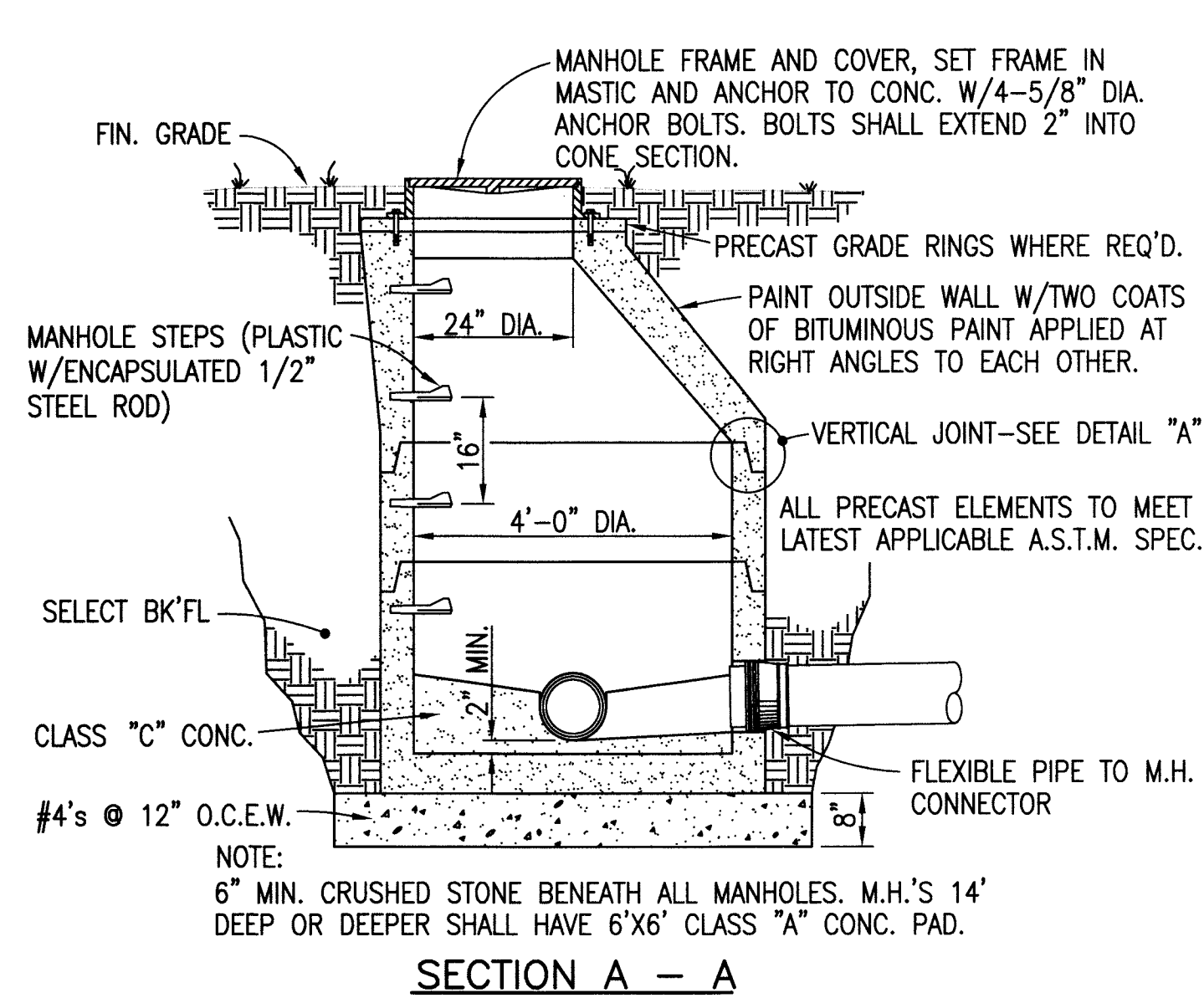
TO TEE BRANCH

45° BEND

7' MAX.

TEE BRANCH

TEE (A/C)



EDGE OF CONC. PAD OR LIMITS OF STONE

6'-0" SQ.

A

SLOPE

SLOPE

SLOPE

PLAN OF M.H. BOTTOM

DETAIL "A"

BUTYL SEALANT

#4's @ 10" O.C.E.W.

PRECAST M.H. RING

POURED IN PLACE CONC. SLAB

8" CONC. SLAB OR 6" STONE (SEE NOTE)

ALT. M.H. BOTTOM

FIN. GRADE

EXISTING MANHOLE

A NEW INVERT SHALL BE CONSTRUCTED AS REQ'D

MIN.

CORE DRILL HOLE TO PROPER SIZE TO ACCOMMODATE THE FLEXIBLE CONNECTOR & PIPE. INSTALL KOR-N-SEAL FLEXIBLE CONNECTOR IN M.H. - CONNECT TO PIPE WITH STAINLESS STEEL BANDS.

PROPOSED SEWER

**GRAVITY SEWER CONNECTION**  
**AT EXISTING MANHOLE**

NOT TO SCALE

STANDARD MANHOLE FRAME & COVER  
NOT TO SCALE



# STANDARD GRAVITY SEWER DETAILS

## 2015 SEWER SYSTEM IMPROVEMENTS

### CITY OF LOBELVILLE, TENNESSEE

REVISIONS		DESIGNED:		BLC	
NO.	DESCRIPTION	DATE	BY	DRAWN:	
				NA	
				REVIEWED:	
				BLC	
				APPROVED:	
				BLC	

SCALE CHECK	THIS DRAW SHOULD MEASURE EXACTLY 1" WHEN PLOTTED
-------------	--

DATE:  
APRIL 2016

SCALE:  
AS NOTED

SHEET NO.

**C-06**

BID DOCUMENT IS