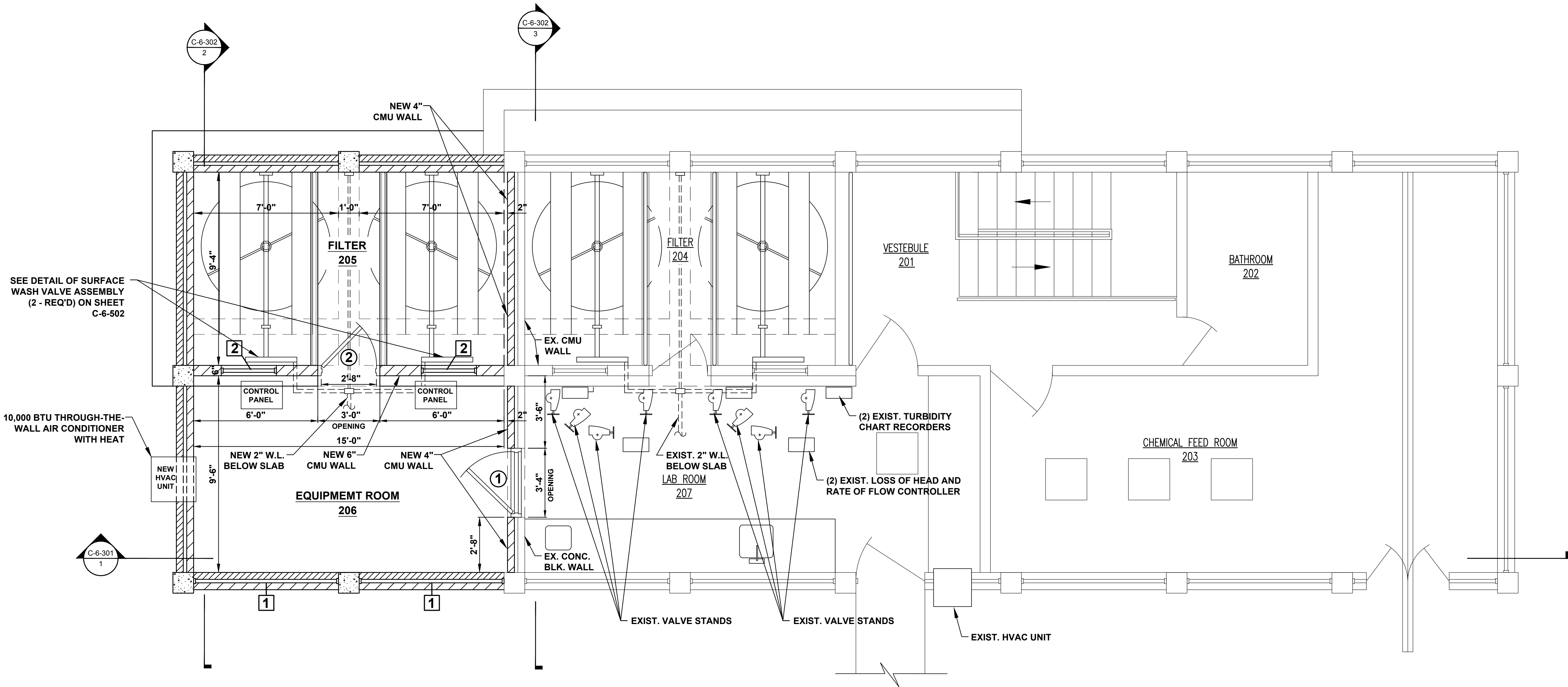


FILE NAME: G:\3827-Lobeville\07-WTP Expansion\Working Drawings\AutoCAD - Record Drawing\020_3827-07_C-6-105.dwg

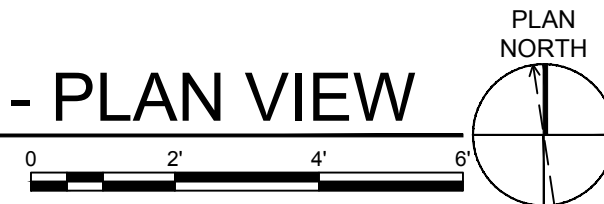
PRINTED: 10/15/2018 @ 11:52AM

PLOTTED BY: rnzad



SECOND FLOOR - PLAN VIEW

SCALE: 3/8"=1'-0"



SEE STRUCTURAL DRAWINGS FOR ALL
CONCRETE AND STEEL REINFORCING
REQUIREMENT

SEE ELECTRICAL DRAWINGS FOR
ALL ELECTRICAL APPURTANCES
REQUIREMENT

NOTE: FOR ROOM FINISH - DOOR AND FRAME -
WINDOW - FILTER CONTROL VALVES SCHEDULE
SEE SHEET C-6-601

THIS RECORD DOCUMENT HAS BEEN PREPARED BASED ON
INFORMATION PROVIDED BY THE CONSTRUCTION CONTRACTOR.
GRW ENGINEERS, INC. HAS ATTEMPTED TO VERIFY THE
ACCURACY AND/OR COMPLETENESS OF THIS INFORMATION BUT
SHALL NOT BE RESPONSIBLE FOR ANY ERRORS OR OMISSIONS
WHICH MAY BE INCORPORATED HEREIN AS A RESULT.

engineering | architecture | geospatial
www.grwinc.com

ENGINEER/ARCHITECT: BARRY L. CLOYD
CONSTRUCTION COMPANY: QUINN CONS. CORP.
09/27/2018

REVISIONS	NO.	DATE	DESCRIPTION	DESIGNED	BY
				BLC	
				DRAWN	
				SH	
				REVIEWED	
				JWH	
				APPROVED	
				BLC	
SCALE CHECK: _____				THIS MARK SHOULD MEASURE EXACTLY 1" WHEN PLOTTED	
DATE:				JUNE 2015	
SCALE:				NOTED	
SHEET NO.					

C-6-105

SECOND FLOOR PLAN
WATER TREATMENT PLANT EXPANSION
CITY OF LOBEVILLE, TENNESSEE

engineering | architecture | geospatial
www.grwinc.com

GRW PROJECT NO. 3827-07
CLIENT PROJECT NO.
ALL RIGHTS RESERVED.
THIS DOCUMENT IS THE PROPERTY OF
GRW ENGINEERS, INC. AND SHALL NOT
BE REPRODUCED IN WHOLE OR IN PART
WITHOUT THE WRITTEN PERMISSION
OF GRW ENGINEERS, INC.

This document, originally
issued, sealed, and signed
by BARRY L. CLOYD,
Tennessee Professional
Engineer, No. 100893, on
JUNE 2015, shall not be
used in lieu of a certified
document.

RECORD DRAWINGS