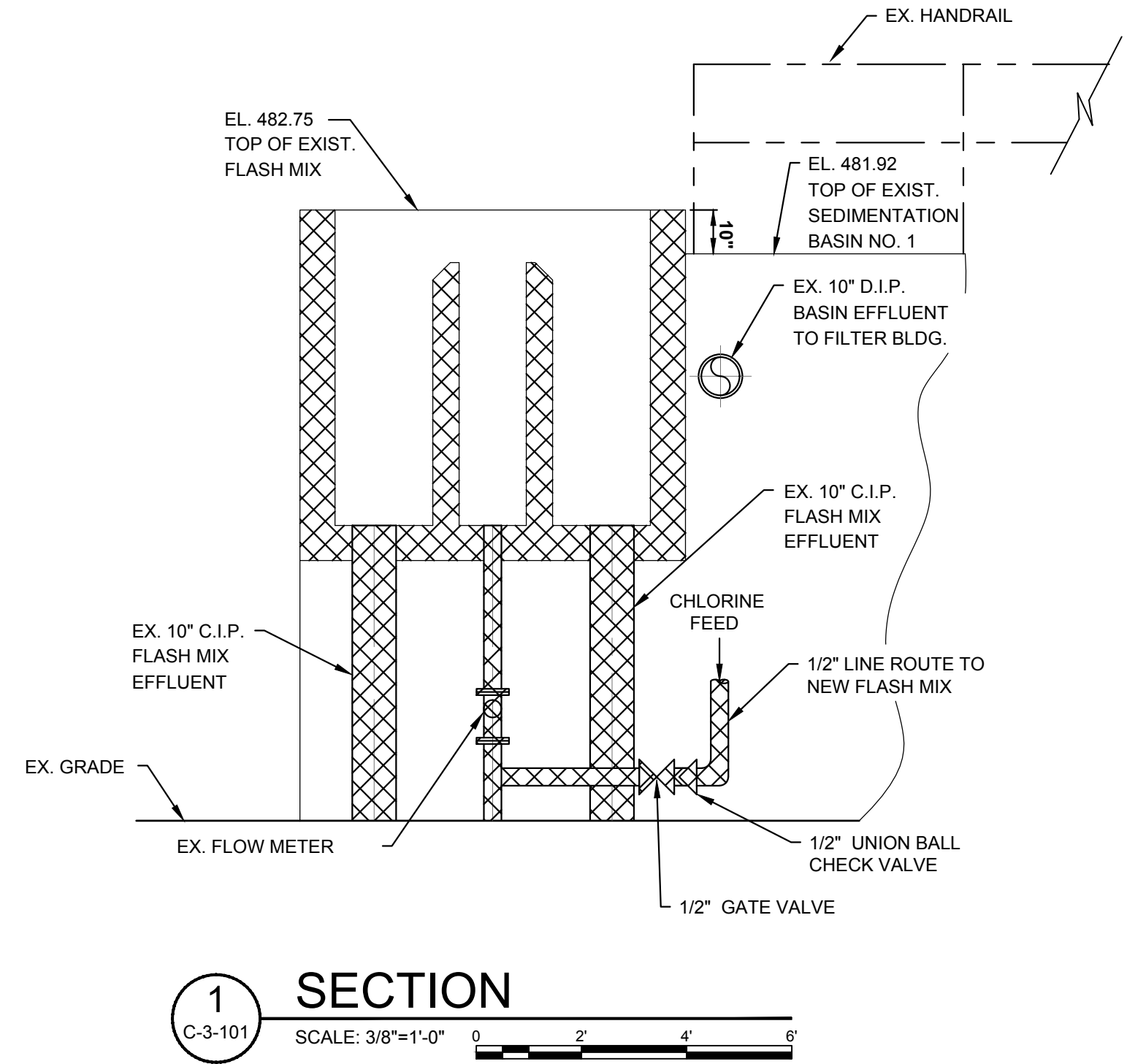
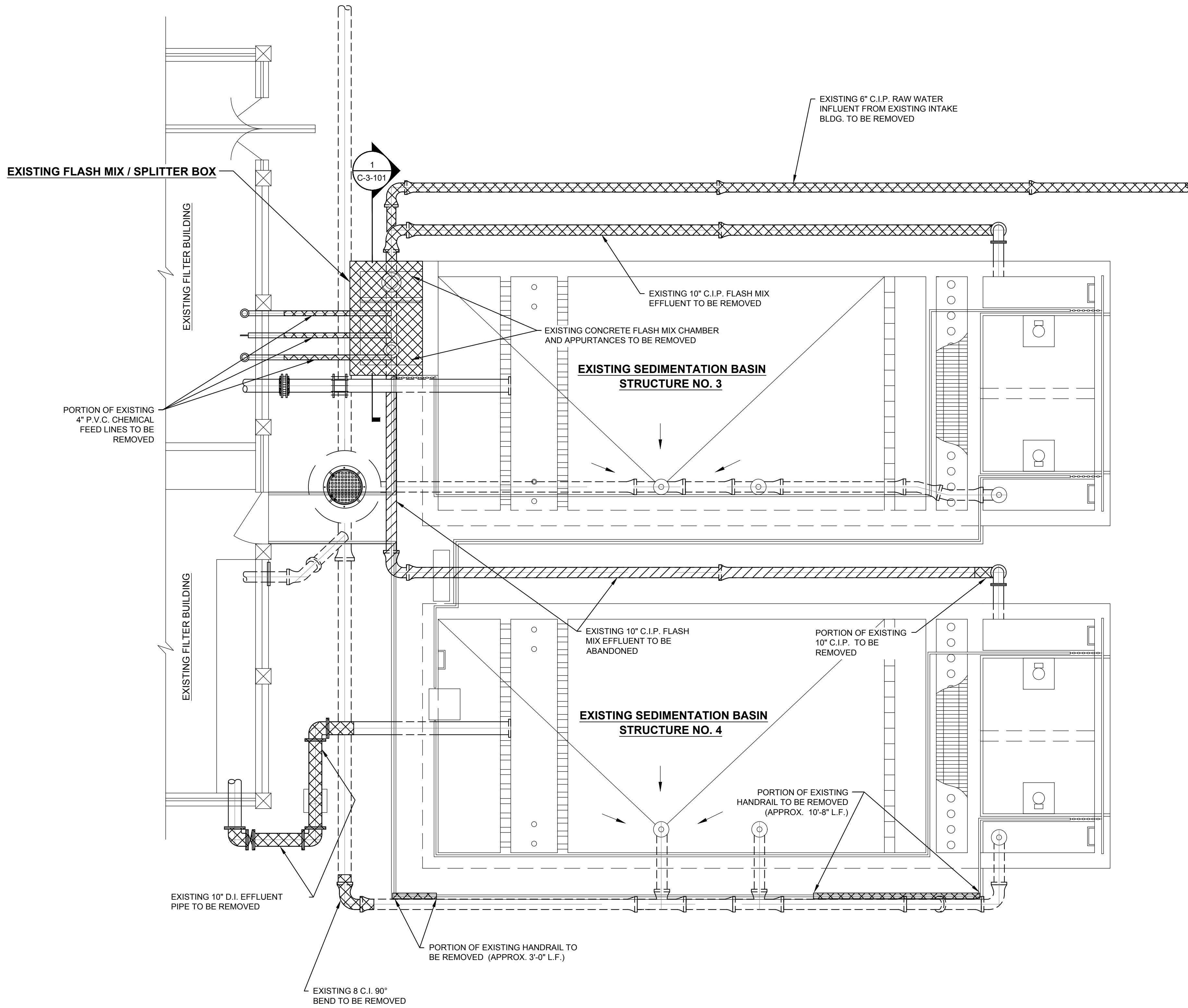


FILE NAME: G:\3827-Lobeville\07-WTP-Expan\Working Drawings\AutoCAD - Record Drawing\012_3827-07_C-3-101.dwg
DESIGNED: BLC
DRAWN: SH
REVIEWED: JWH
APPROVED: BLC
DATE: JUNE 2015
SCALE: NOTED
SHEET NO. C-3-101

PLOTTED BY: razard
PRINTED: 10/15/2018 @ 11:51 AM



DEMOLITION NOTES:

1. CONTRACTOR SHALL COORDINATE DEMOLITION SO AS TO KEEP TWO EXISTING WATER PLANT SETTLING/ FLOCCULATION BASIN IN OPERATION UNTIL COMPLETION OF THE UPGRADE OF THE OTHER BASIN IS IN SERVICE.
2. CONTRACTOR SHALL REMOVE THE EXISTING FLASH MIX CHAMBER STRUCTURE AS SHOWN AND ALL RESULTING DEBRIS REMOVED OFFSITE.
3. CONTRACTOR TO REMOVE PORTIONS OF EXISTING HANDRAIL AS SHOWN FOR ACCESS TO NEW SETTLING/ FLOCCULATION BASIN NO. 3
4. EXISTING PIPING TO BE REMOVED AS SHOWN AND ALL RESULTING DEBRIS REMOVED OFFSITE.
5. WHERE CONCRETE HAS BEEN REMOVED APPLY NSF APPROVED(TNEMEC SERIES 20) COATING OVER CUT ENDS OF EXPOSED REBAR.
6. EXISTING PIPING TO BE ABANDON AS SHOWN.

LEGEND

- EXISTING STRUCTURE, PIPING AND / OR EQUIPMENT TO BE DEMOLISHED OR REMOVED.
- EXISTING BASIN AND PIPING TO REMAIN.
- EXISTING STRUCTURE, PIPING AND / OR EQUIPMENT TO BE ABANDONED.

THIS RECORD DOCUMENT HAS BEEN PREPARED BASED ON INFORMATION PROVIDED BY THE CONSTRUCTION CONTRACTOR. GRW ENGINEERS, INC. HAS ATTEMPTED TO VERIFY THE ACCURACY AND/OR COMPLETENESS OF THIS INFORMATION BUT SHALL NOT BE RESPONSIBLE FOR ANY ERRORS OR OMISSIONS WHICH MAY BE INCORPORATED HEREIN AS A RESULT.

engineering | architecture | geospatial
www.grwinc.com

ENGINEER/ARCHITECT: BARRY L. CLOYD
CONSTRUCTION COMPANY: QUINN CONS. CORP.
DATE: 09/27/2018

EXISTING FLOCCULATION / SEDIMENTATION BASIN - DEMOLITION
WATER TREATMENT PLANT EXPANSION
CITY OF LOBEVILLE, TENNESSEE

REVISIONS	DESCRIPTION	DATE	BY	DESIGNED	BLD	SH	JWH	BLC
NO.								

DATE: JUNE 2015
SCALE: NOTED
SHEET NO. C-3-101

GRW PROJECT NO. 3827-07
CLIENT PROJECT NO.
ALL RIGHTS RESERVED. NO PART OF THIS DOCUMENT SHALL BE REPRODUCED IN WHOLE OR IN PART WITHOUT THE WRITTEN PERMISSION OF GRW ENGINEERS, INC.

engineering | architecture | geospatial
www.grwinc.com

This document, originally issued, sealed, and signed by BARRY L. CLOYD, Tennessee Professional Engineer, No. 100893, on JUNE 2015, shall not be used in lieu of a certified document.