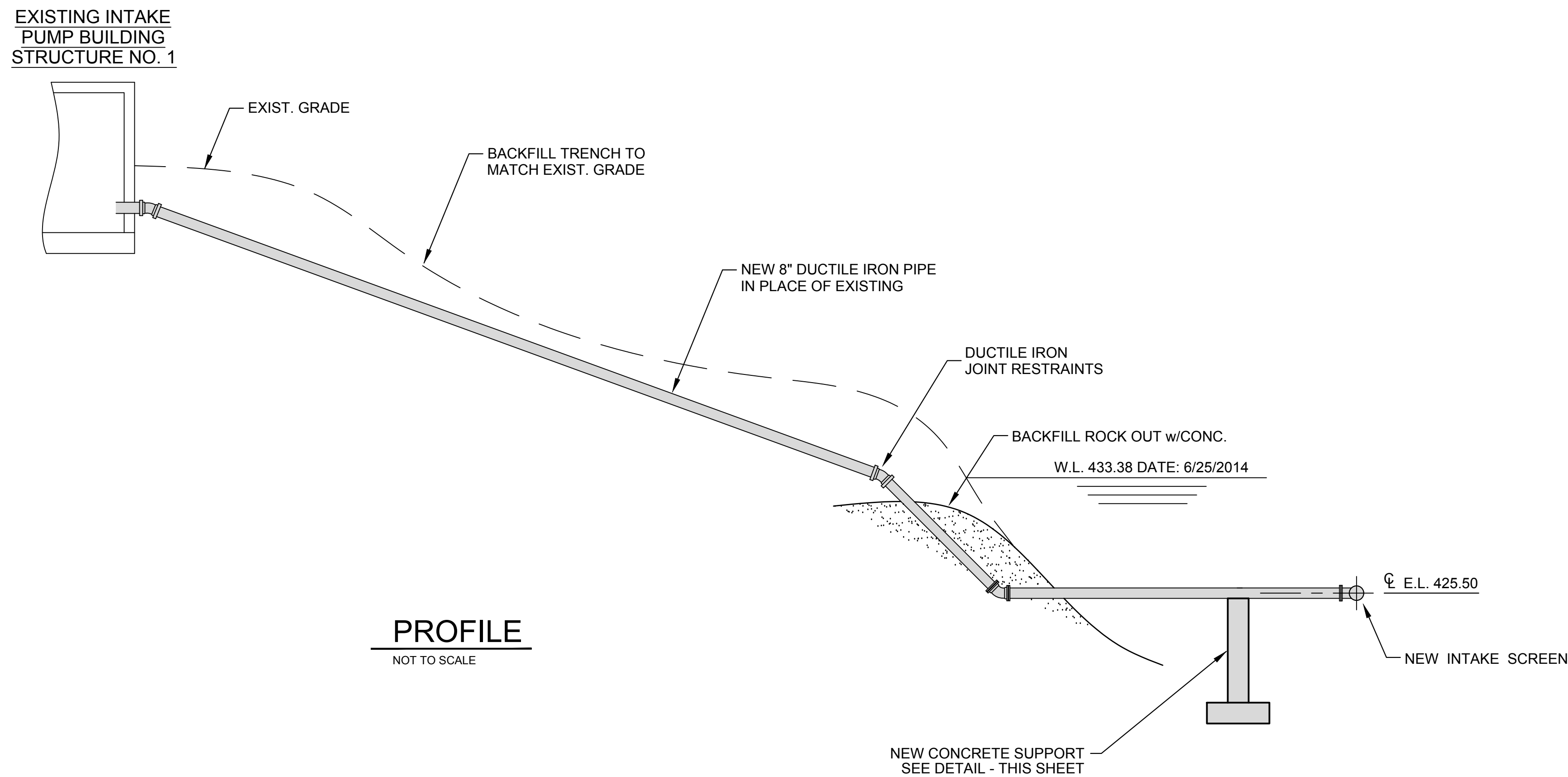
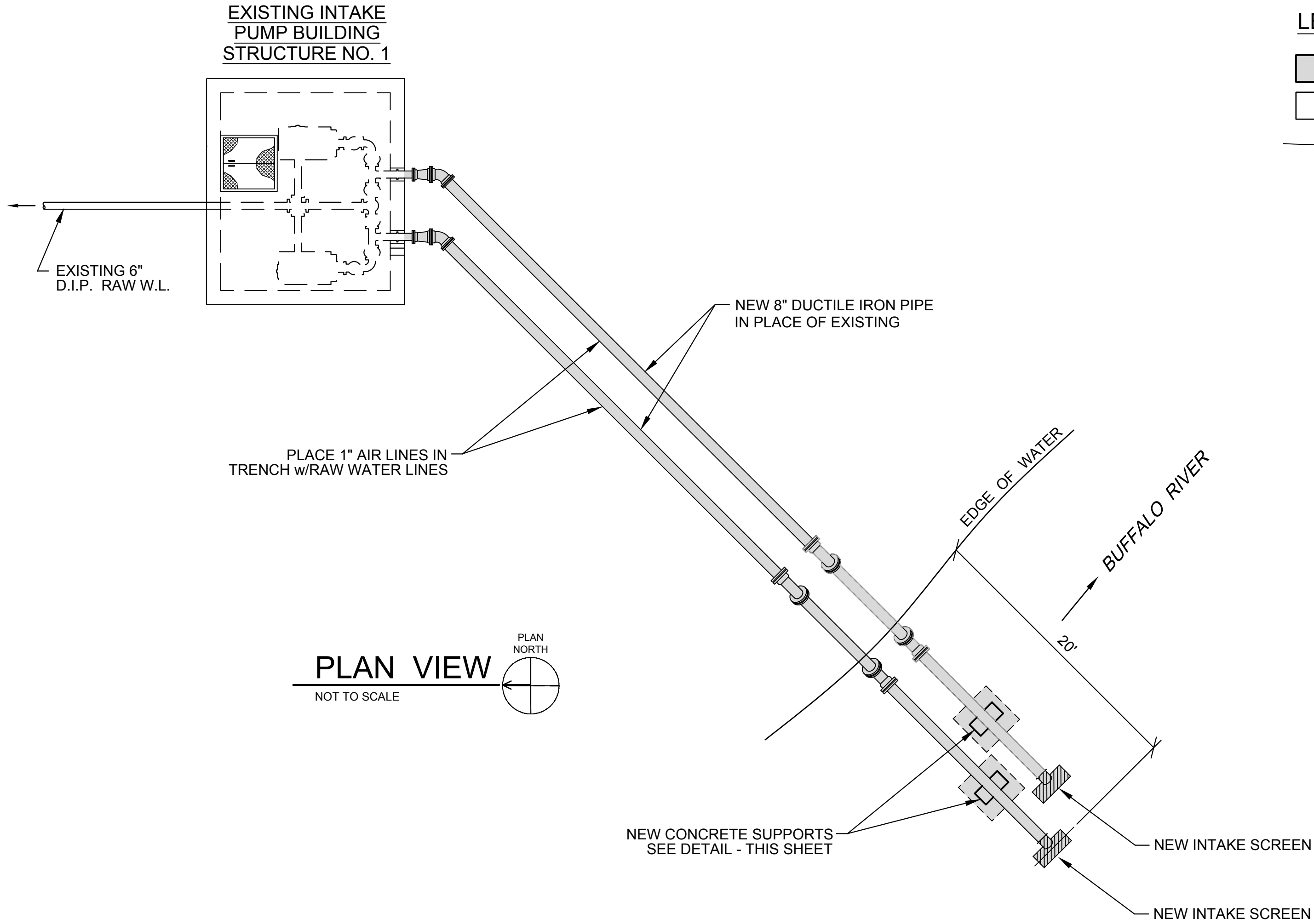


FILE NAME: G:\3827-Lobellville\07-WTP Expansion\Working Drawings\AutoCAD - Record Drawing\010_3827-07_C-1-102.dwg
PRINTED: 10/15/2018 @ 11:51 AM
PLOTTED BY: nazad

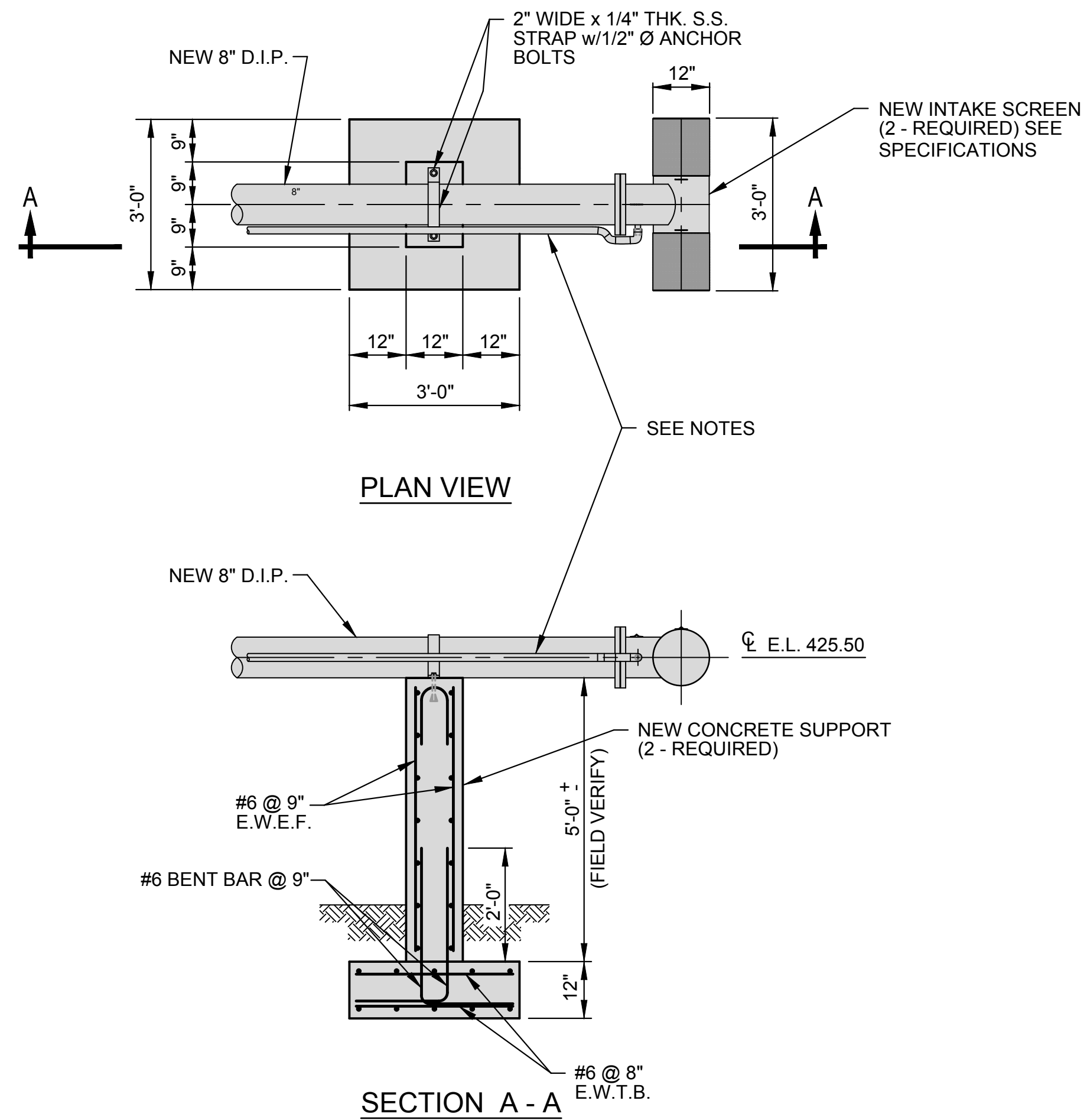


LEGEND

PROPOSED / NEW

EXISTING STRUCTURE

EXISTING GRADE



- NOTES:
- NEW 1" AIR LINE NON CORRODING PIPE AND FITTINGS AS REQUIRED.
 - ANCHOR TO INTAKE LINES AND STRUCTURE AS REQUIRED.

THIS RECORD DOCUMENT HAS BEEN PREPARED BASED ON INFORMATION PROVIDED BY THE CONSTRUCTION CONTRACTOR. GRW ENGINEERS, INC. HAS ATTEMPTED TO VERIFY THE ACCURACY AND/OR COMPLETENESS OF THIS INFORMATION BUT SHALL NOT BE RESPONSIBLE FOR ANY ERRORS OR OMISSIONS WHICH MAY BE INCORPORATED HEREIN AS A RESULT.

engineering | architecture | geospatial

ENGINEER/ARCHITECT: BARRY L. CLOYD

CONSTRUCTION COMPANY: QUINN CONS. CORP.

DATE: 09/27/2018

This document, originally issued, sealed, and signed by BARRY L. CLOYD, Tennessee Professional Engineer, No. 100893, on JUNE 2015, shall not be used in lieu of a certified document.

GRW PROJECT NO. 3827-07

CLIENT PROJECT NO.

ALL RIGHTS RESERVED. THE INFORMATION CONTAINED HEREIN IS THE PROPERTY OF GRW ENGINEERS, INC. AND SHALL NOT BE REPRODUCED IN WHOLE OR IN PART WITHOUT THE WRITTEN PERMISSION OF GRW ENGINEERS, INC. WITHOUT THE WRITTEN PERMISSION.

engineering | architecture | geospatial

www.grwinc.com

EXISTING RAW WATER INTAKE STRUCTURE MODIFICATION - PLAN AND PROFILE

WATER TREATMENT PLANT EXPANSION

CITY OF LOBELVILLE, TENNESSEE

DESIGNED	BLC
BY	
DATE	
REVIEWED	SH
APPROVED	JWH
SCALE CHECK	BLC

REVISIONS

NO.	DESCRIPTION

DATE: JUNE 2015

SCALE: NOTED

SHEET NO.

C-1-102