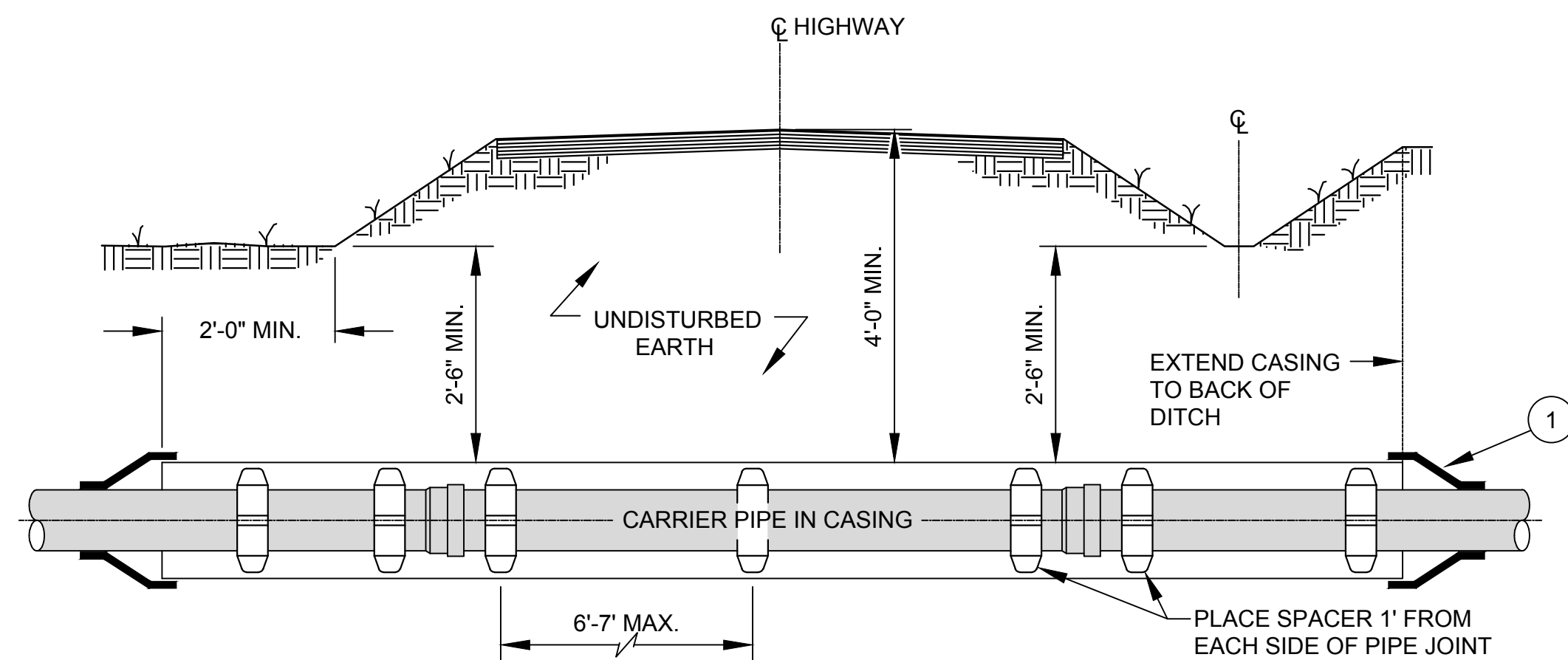
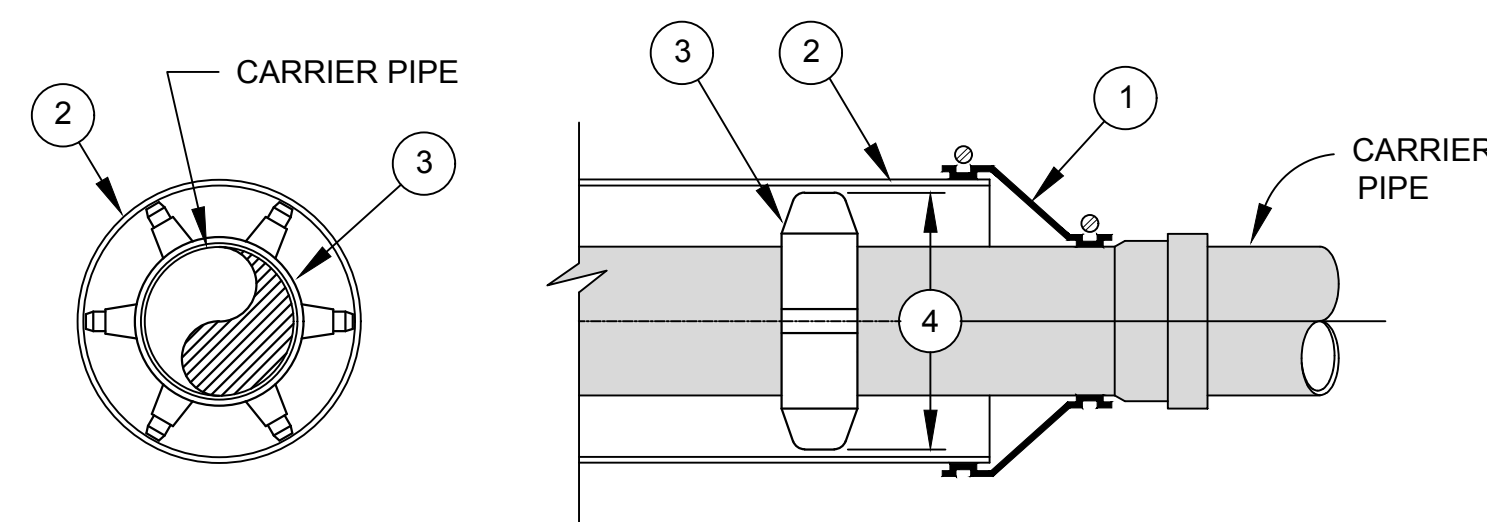


PLAN VIEW OF SR 13 & CUNNINGHAM RIDGE RD.
NOT TO SCALE

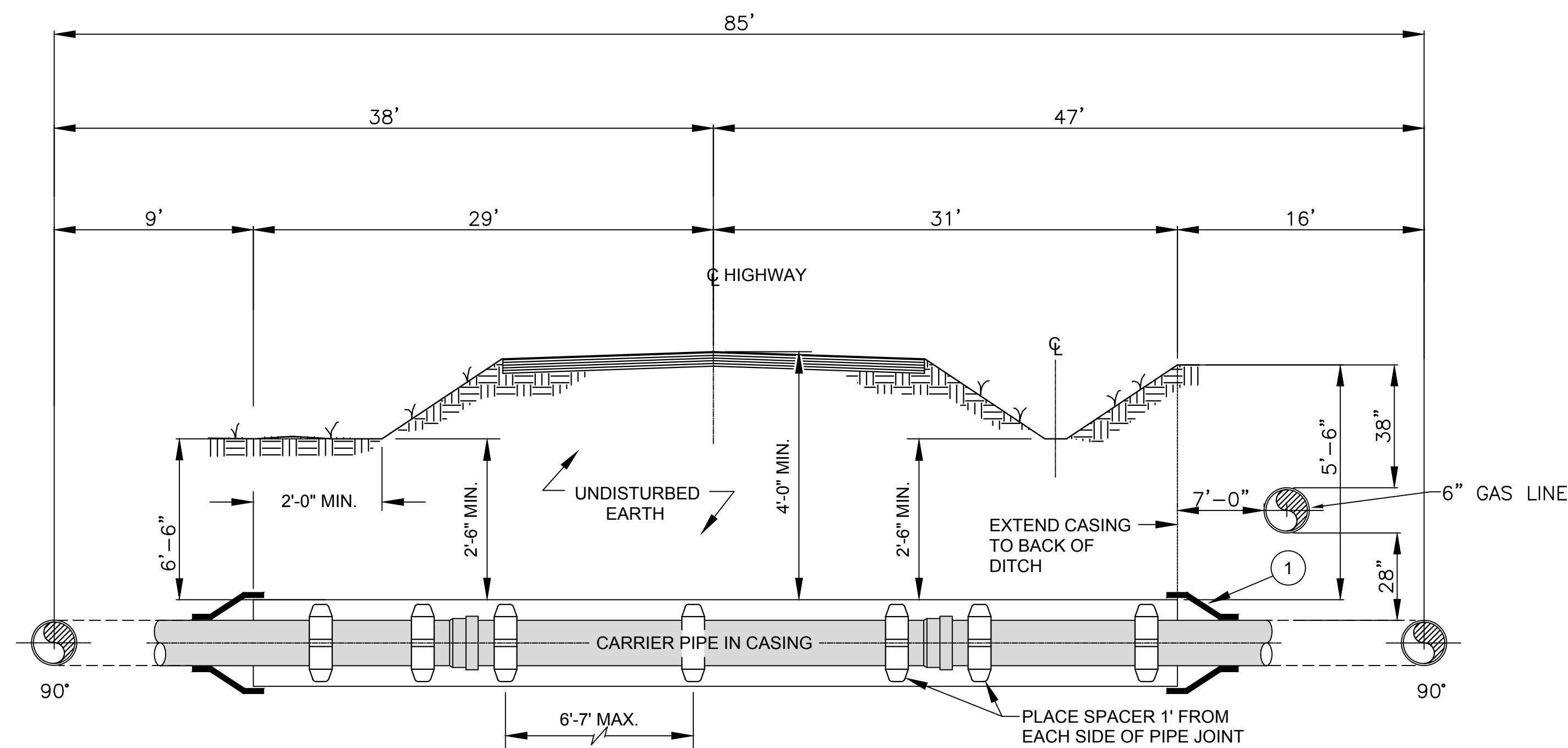


TYPICAL DETAIL OF ROAD CROSSING
W/CASING AND CARRIER PIPE

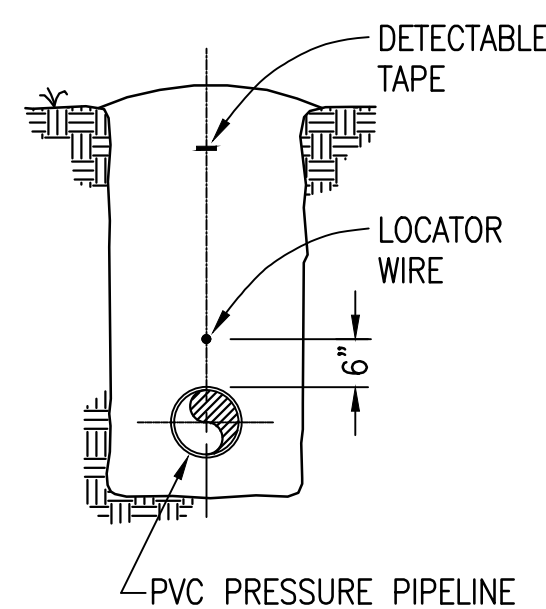


- ① USE WATERTIGHT WRAP AROUND END SEALS WITH STAINLESS STEEL BANDS.
- ② SMOOTH WALL STEEL CASING PIPE WITH BITUMINOUS COATING INSIDE & OUT.
- ③ CASING SPACERS SHALL BE STAINLESS STEEL TYPE INSTALLED IN A CENTERED/RESTRAINED CONFIGURATION.
USE PSI MODEL S8G-2, APS MODEL SSIM OR APPROVED EQUAL FOR 4" THRU 24" DIA. CARRIER PIPES.
USE PSI MODEL S12G-2, APS MODEL SSIM OR APPROVED EQUAL FOR 26" DIA. AND LARGER CARRIER PIPES.
- ④ SPACER RISERS/RUNNERS SHALL BE SIZED AND TRIMMED TO MAINTAIN 1/2" MAXIMUM CLEARANCE BETWEEN RUNNER AND CASING PIPE.
- ⑤ CARRIER PIPE IN ALL CASING OVER 60 FEET IN LENGTH SHALL BE DUCTILE IRON WITH LOCKING GASKETS.

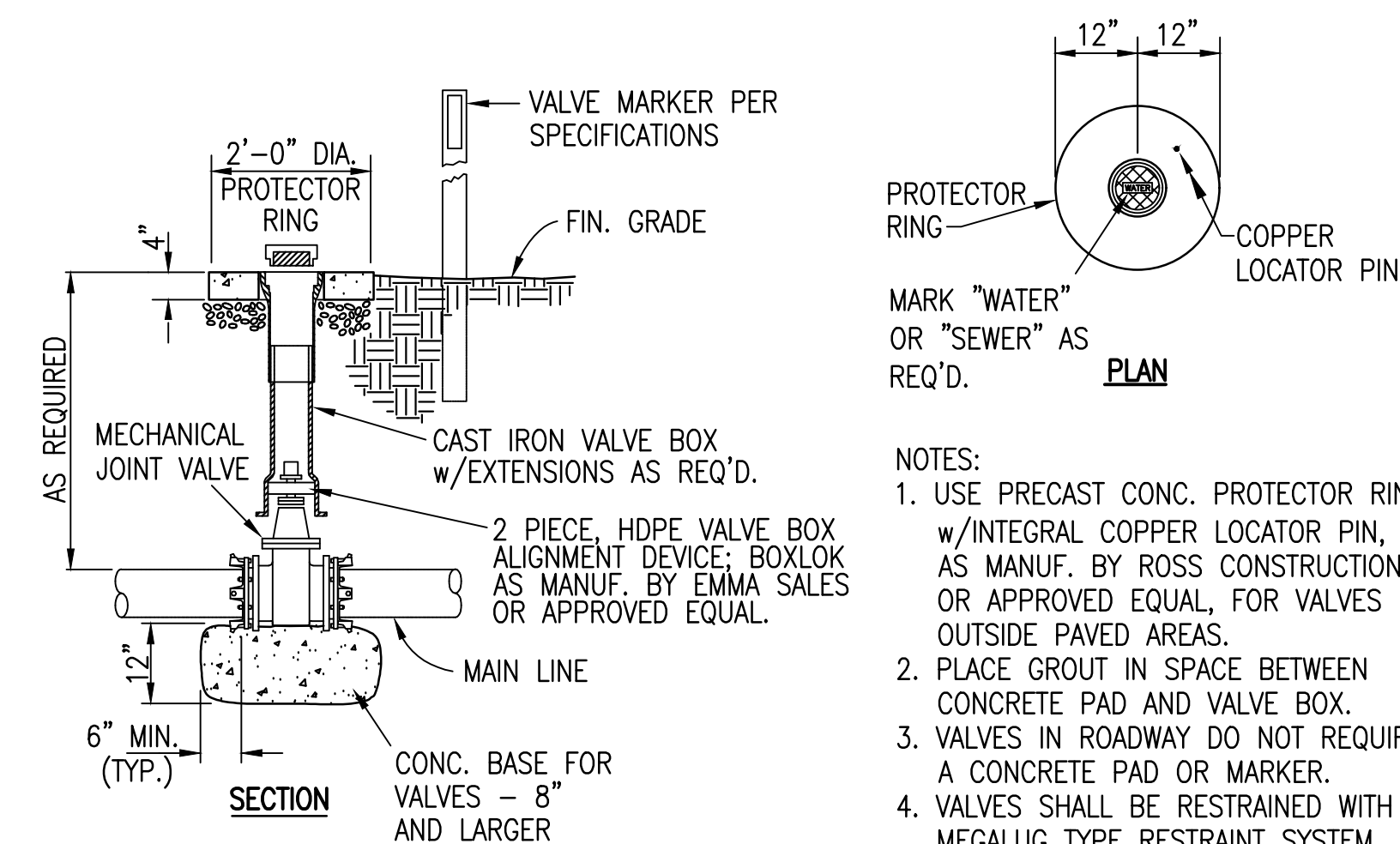
CASING PIPE W/CARRIER PIPE DETAIL



DETAIL OF ROAD CROSSING
SR 13 & CUNNINGHAM RIDGE RD.
NOT TO SCALE

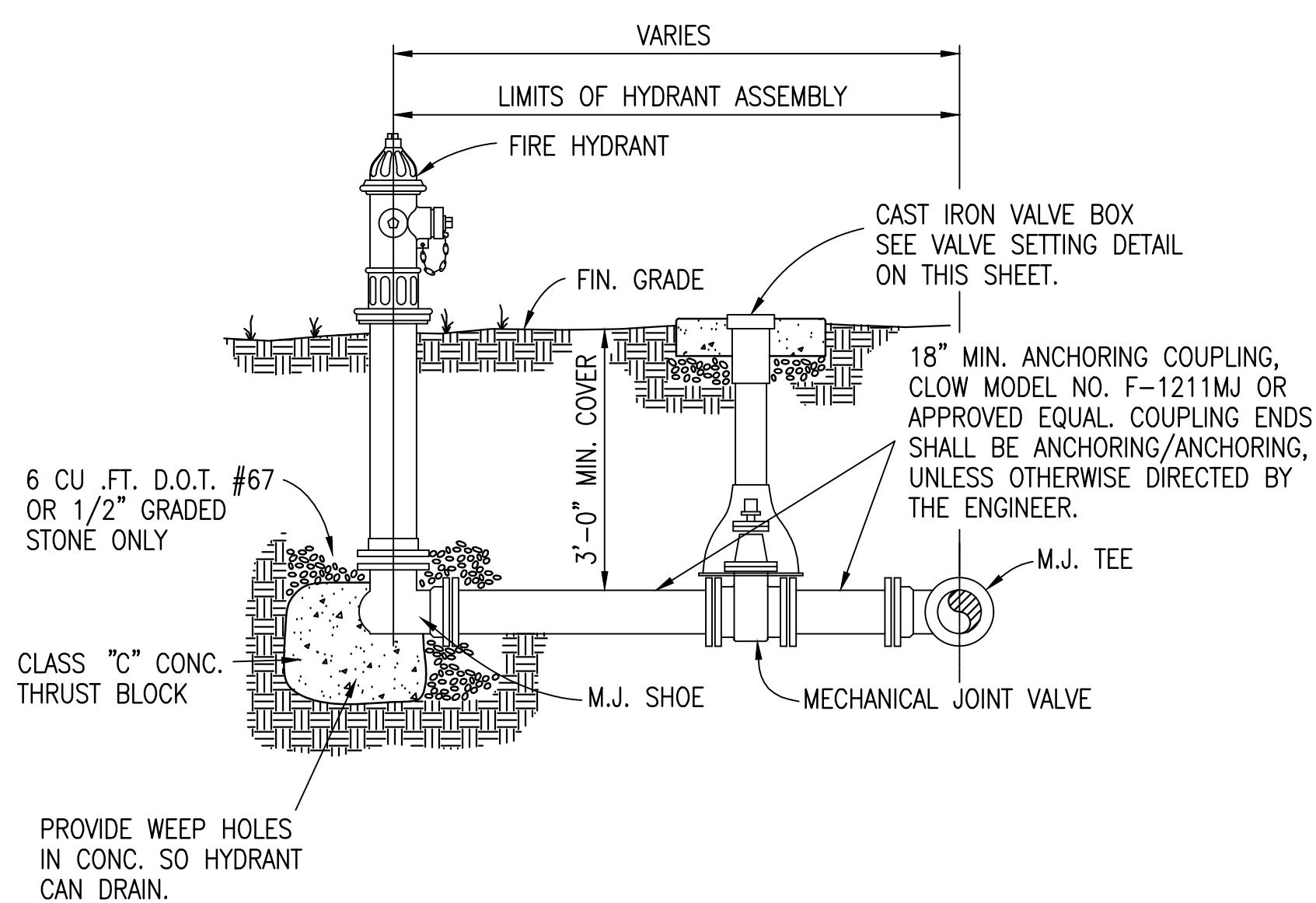


DETECTABLE WIRE DETAIL
NOT TO SCALE

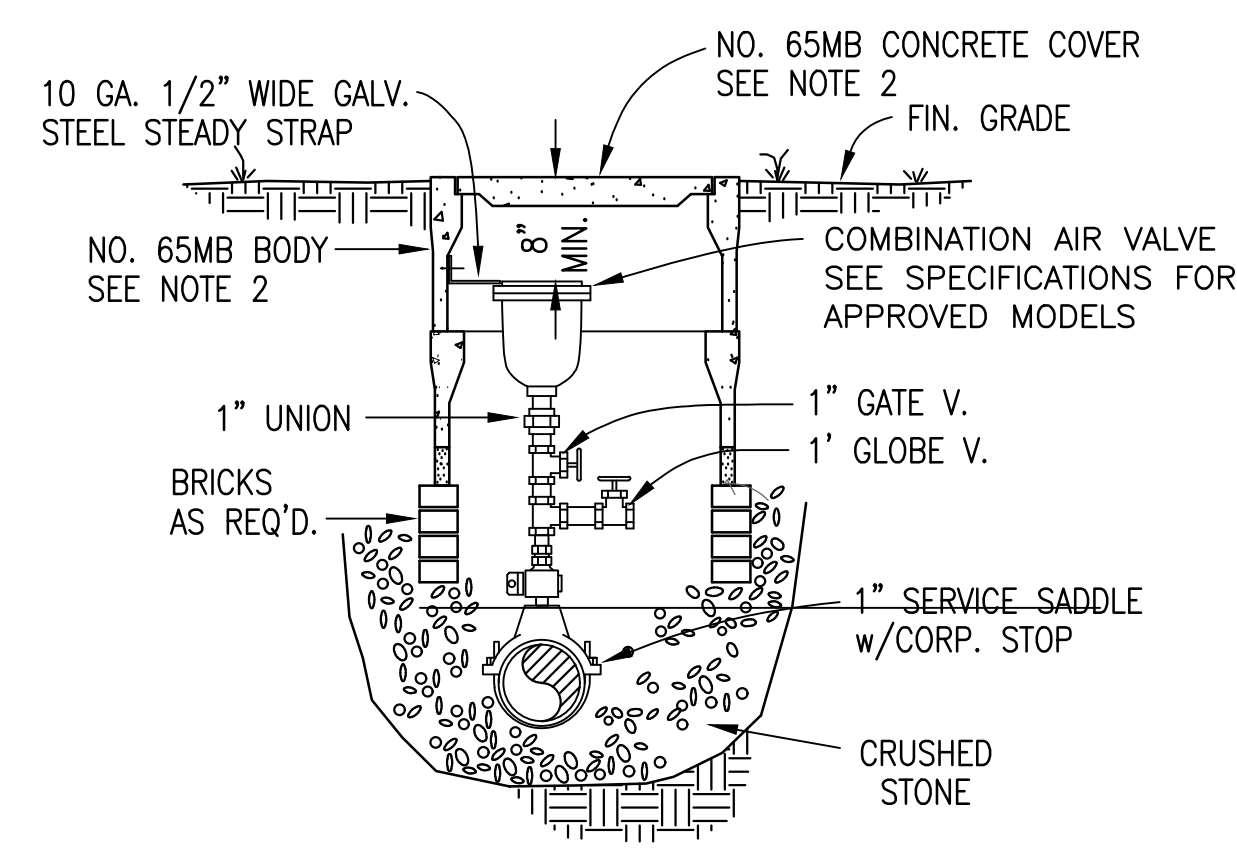


VALVE SETTING DETAIL
NOT TO SCALE

- NOTES:
1. THE CONTRACTOR SHALL MAKE PROVISIONS TO GIVE ADEQUATE SPACE FOR AIR RELEASE APPURTENANCES (SEE SHOP DRAWINGS).
 2. 17"x28" CONC. METER BOX - AS MANUF. BY BROOKS PRODUCTS, INC. MEMPHIS, TN - OR APPROVED EQUAL.
 3. SEAL SLOTS IN METER BOX W/NON-SHRINK GROUT.
 4. ALL ACCESSORY VALVES AND PIPING SHALL BE BRASS.




TYPICAL HYDRANT ASSEMBLY
NOT TO SCALE



COMBINATION AIR VALVE
NOT TO SCALE

THIS RECORD DOCUMENT HAS BEEN PREPARED BASED ON INFORMATION PROVIDED BY THE CONSTRUCTION CONTRACTOR GRW ENGINEERS, INC. HAS ATTEMPTED TO VERIFY THE ACCURACY AND/OR COMPLETENESS OF THIS INFORMATION BUT SHALL NOT BE RESPONSIBLE FOR ANY ERRORS OR OMISSIONS WHICH MAY BE INCORPORATED HEREIN AS A RESULT.



engineering | architecture | geospatial
www.grwinc.com

ENGINEER/ARCHITECT: GRW Engineers, Inc.

CONSTRUCTION COMPANY: Hughes Construction Co.

DATE: 11/6/2015

This document, originally issued, sealed, and signed by Barry L. Cloyd, Tennessee Professional Engineer, No. 100893, on JULY 2013, shall not be used in lieu of a certified document.

GRW PROJECT NO. 3827-06

ALL RIGHTS RESERVED;
THIS DOCUMENT IS THE PROPERTY OF
FEDERAL BUREAU OF INVESTIGATION
AND SHALL NOT BE REPRODUCED IN WHOLE OR IN PART
WITHOUT THE WRITTEN PERMISSION
OF THE FBI.



ENGINEERS - ARCHITECTS - PLANNERS

STANDARD WATER LINE DETAILS

2012-D DISASTER RECOVERY EMERGENCY
WATER CONNECTION IMPROVEMENTS - CONTRACT 34821
CITY OF LOBELVILLE, TENNESSEE

REVISIONS				DESIGNED:	BLC
NO	DESCRIPTION	DATE	BY	DRAWN:	DM
				REVIEWED: <th>BLC</th>	BLC
				APPROVED:	BLC

SCALE CHECK: ☐ THIS MARK SHOULD MEASURE EXACTLY 1" WHEN PLOTTED

DATE:	JULY 2013
SCALE:	AS NOTED
SHEET NO.	

C-0-11