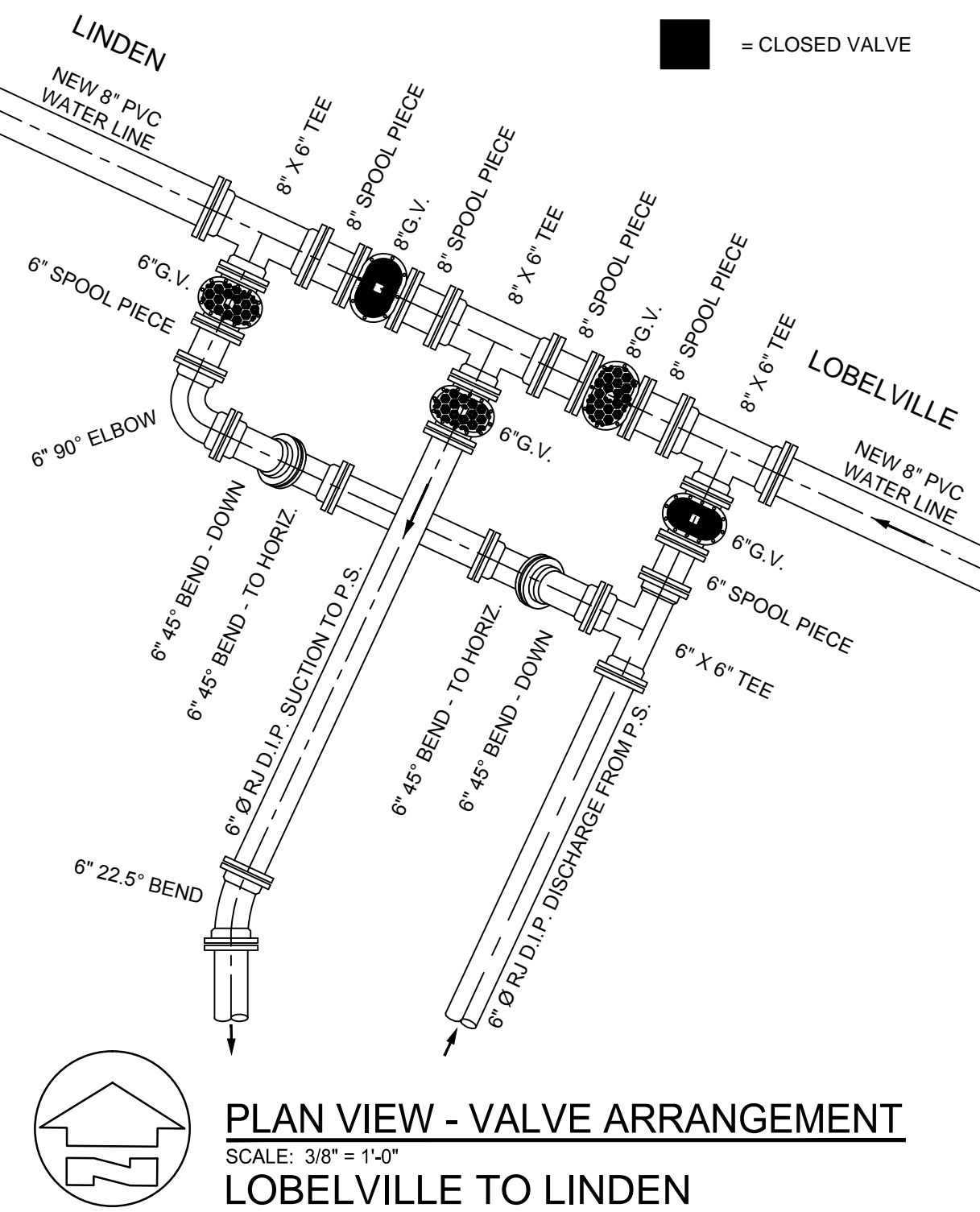
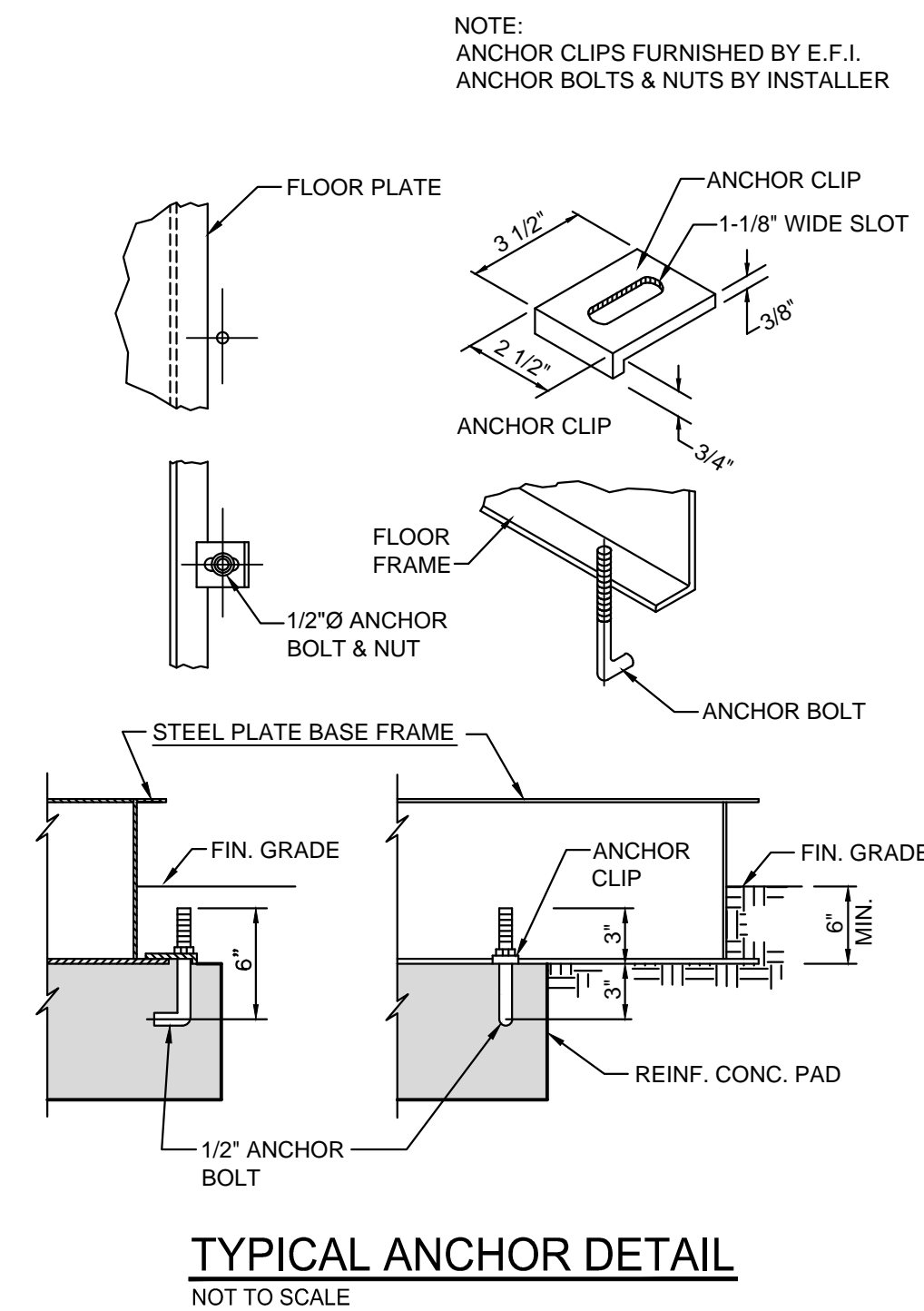
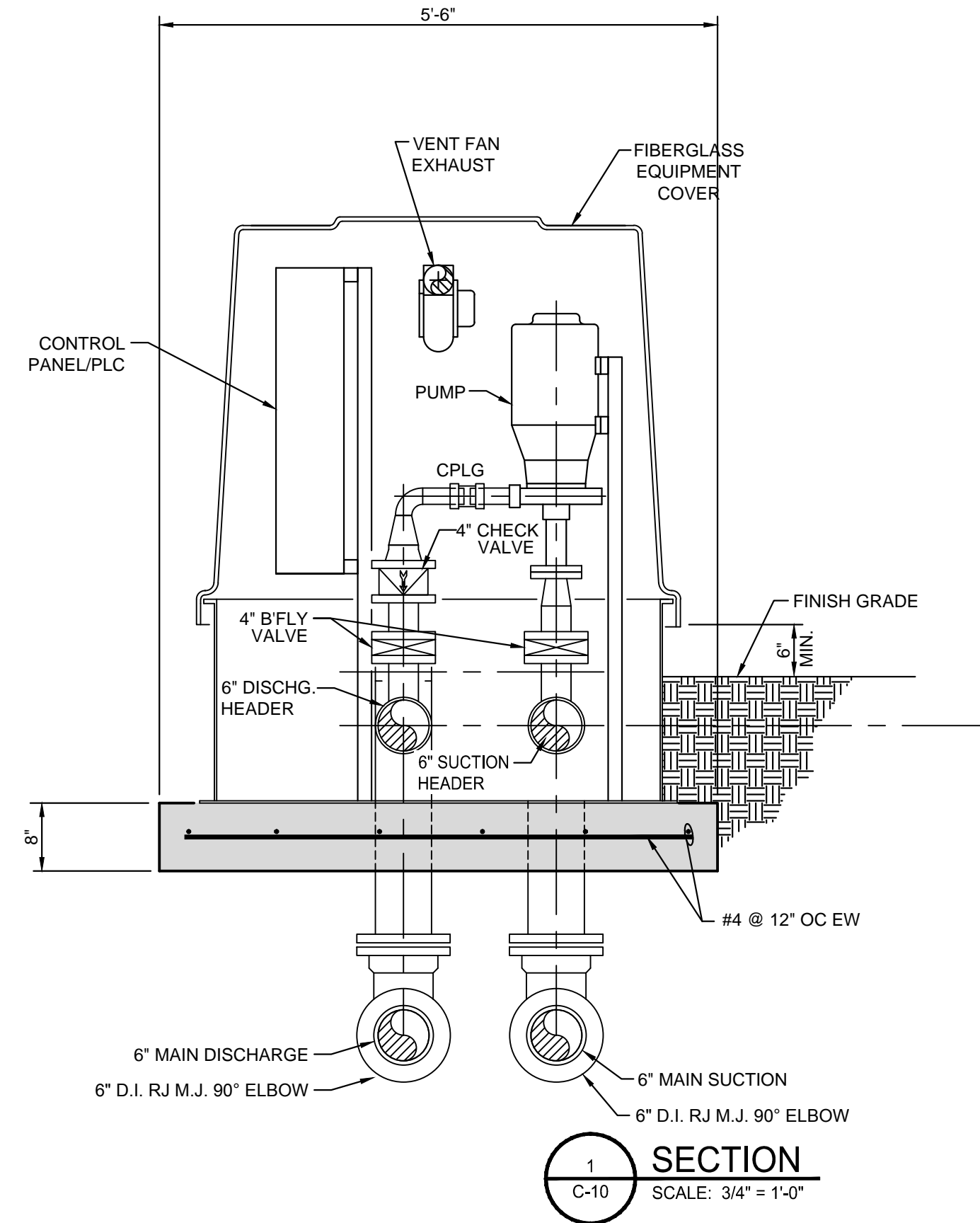
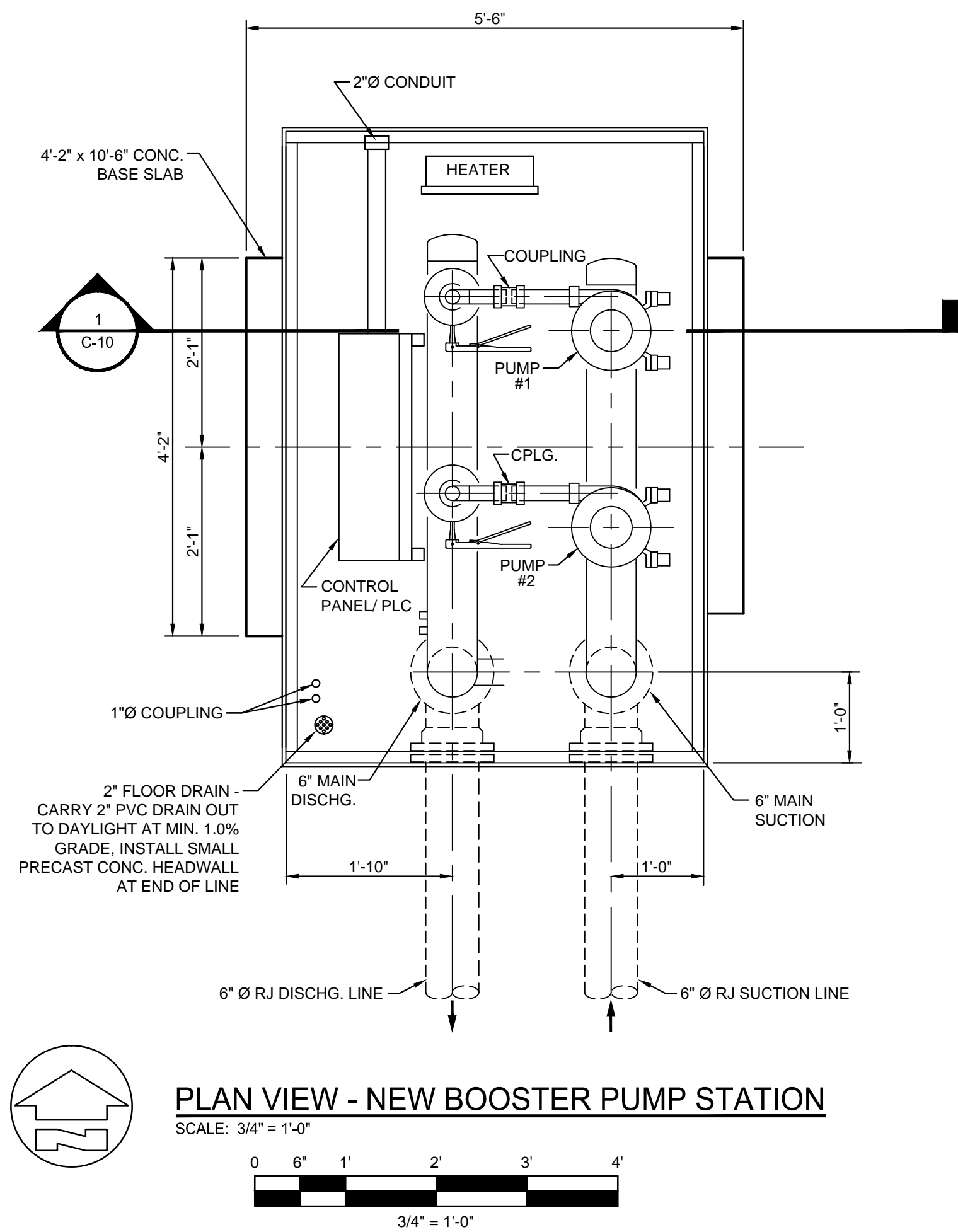
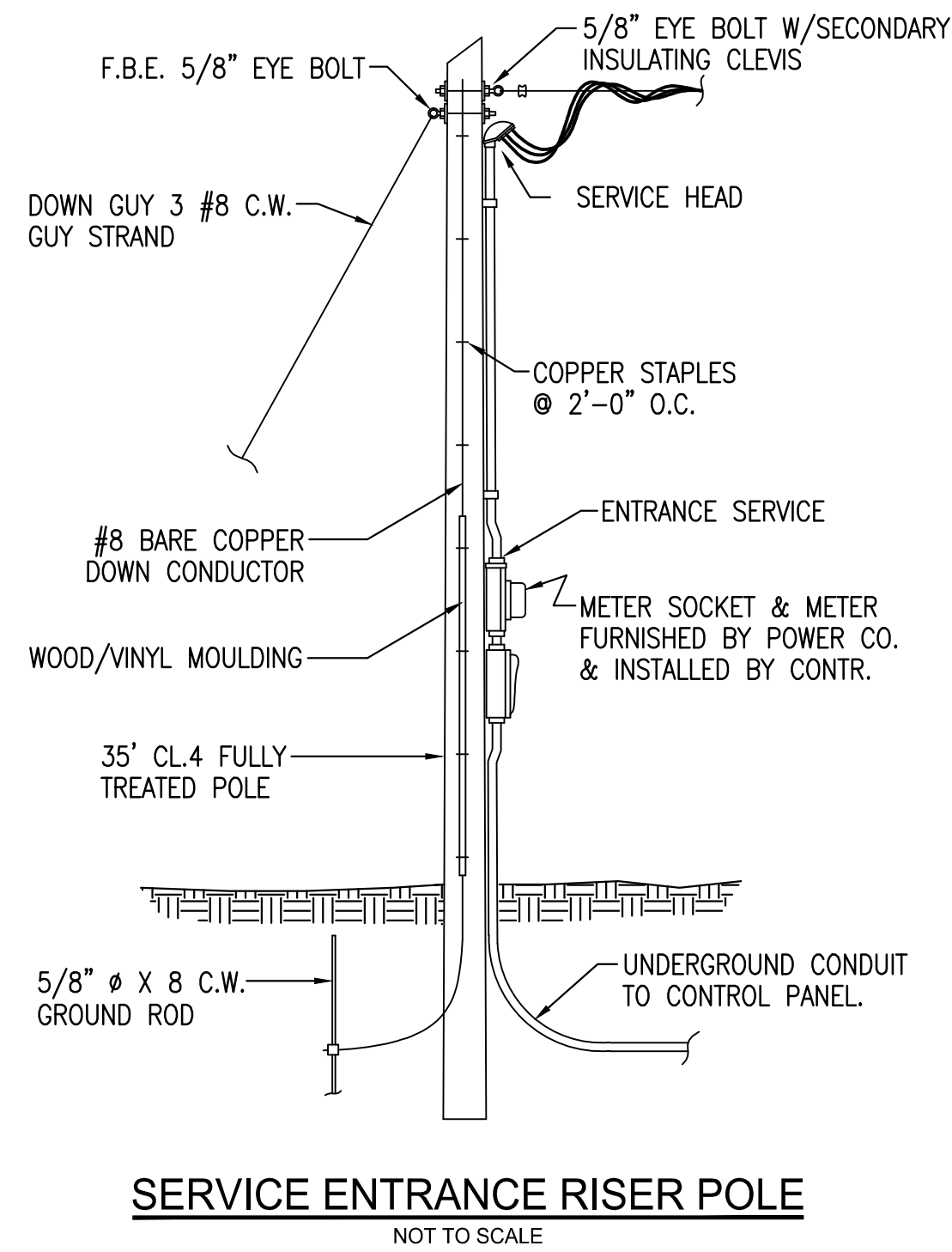
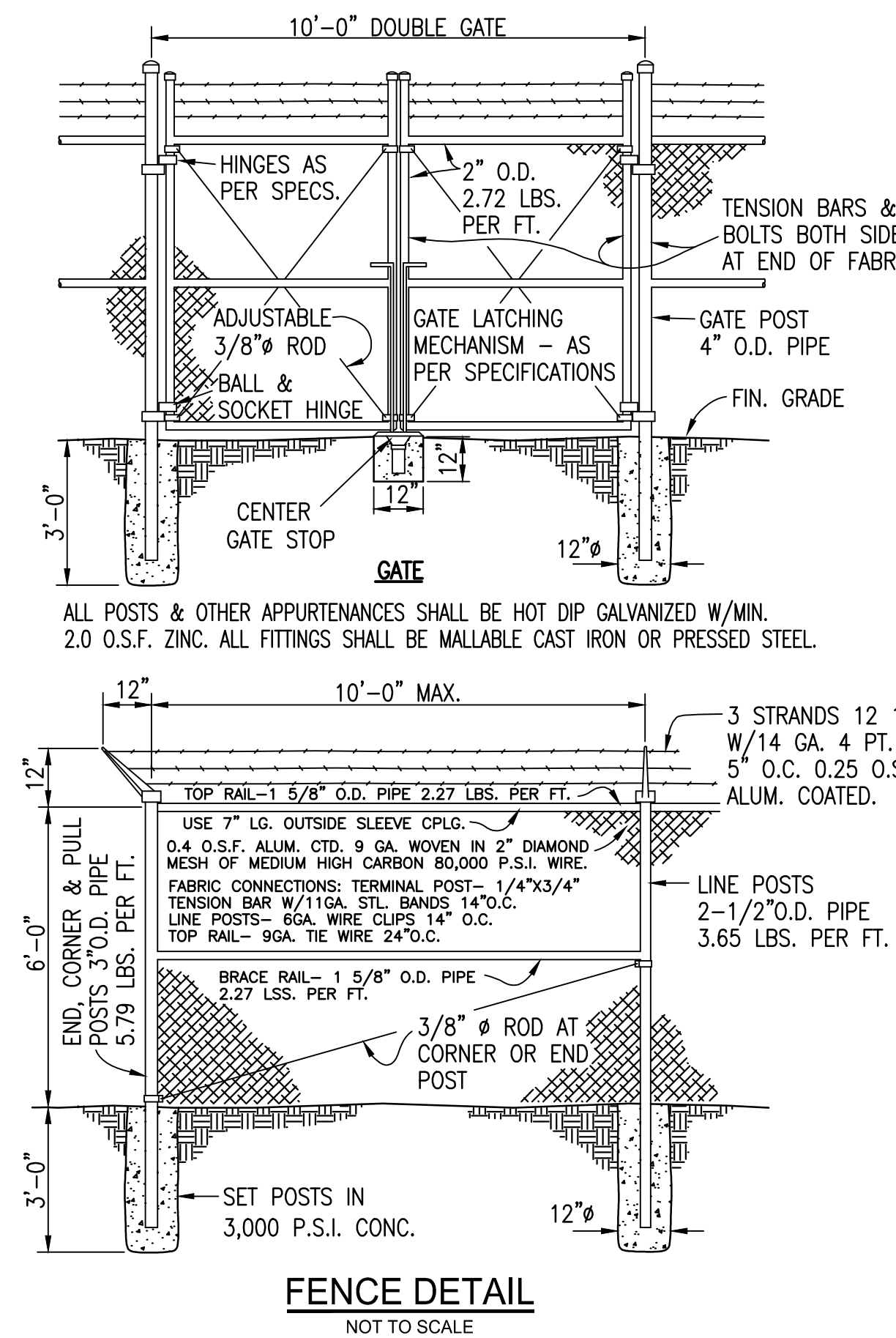


PRINTED: 4/15/2013 @ 10:08AM

FILE NAME: I:\3927 Lobelville\3-Emr Genr\Working Drawings\3927-03-C-05 PS.dwg



DESIGN CRITERIA	
Power Service: 208 Volts, 3 Phase, 60 Cycle	
PUMP DATA	
Type:	HORIZ., CLOSE CPLD., END SUCTION
Pump:	1 & 2
Capacity:	80 G.P.M. AT 200 FEET T.D.H.
Size:	1 1/2" X 2" X 8"
Motor:	15 H.P., 3500 R.P.M.



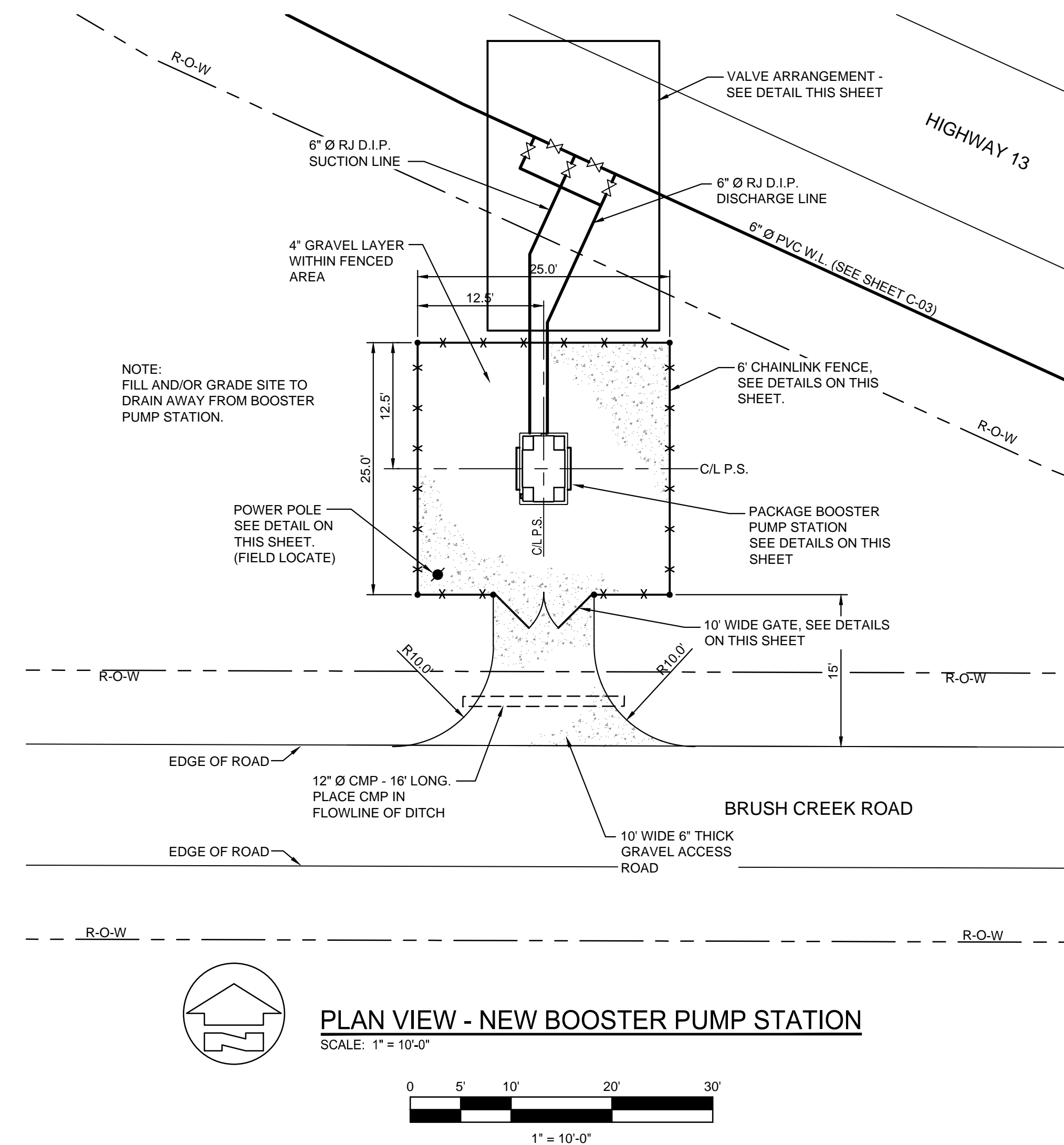
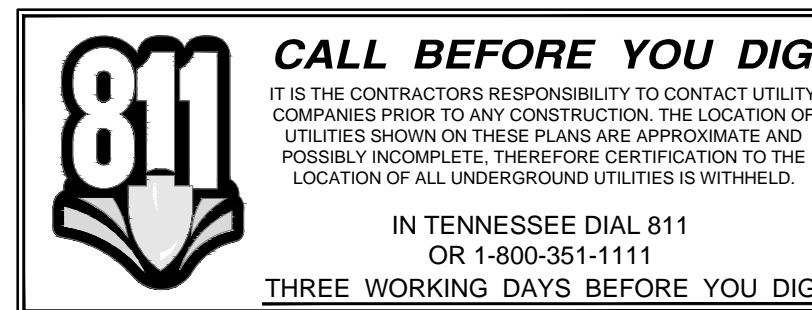
THIS RECORD DOCUMENT HAS BEEN PREPARED BASED ON INFORMATION PROVIDED BY THE CONSTRUCTION CONTRACTOR. GRW ENGINEERS, INC. HAS ATTEMPTED TO VERIFY THE ACCURACY AND/OR COMPLETENESS OF THIS INFORMATION BUT SHALL NOT BE RESPONSIBLE FOR ANY ERRORS OR OMISSIONS WHICH MAY BE INCORPORATED HEREIN AS A RESULT.

GRW ENGINEERS, Inc.  
Engineers, Architects, Planners  
Interior Architectural, Mechanical, Electrical

ENGINEER'S REPRESENTATIVE: *Cody Motter*

CONSTRUCTION COMPANY: *GRIMES AND GRIMES CONST.*

DATE: *04/08/2013*



This document, originally issued, sealed, and signed by JAMES W. HILBORN, Tennessee Professional Engineer, No. 16514, on 4-08-2013, shall not be used in lieu of a certified document.

GRW PROJECT NO. XXXX-XX

CLIENT PROJECT NO. XXXX

ALL RIGHTS RESERVED. NO PART OF THIS DOCUMENT MAY BE REPRODUCED IN WHOLE OR IN PART WITHOUT THE WRITTEN PERMISSION OF GRW ENGINEERS, INC. AND SHALL NOT BE USED FOR ANY OTHER PROJECT OTHER THAN THIS SPECIFIC PROJECT WITHOUT THE WRITTEN PERMISSION OF GRW ENGINEERS, INC.

GRW ENGINEERS, INC.  
ENGINEERS - ARCHITECTS - PLANNERS

www.grwinc.com

LOBELVILLE-LINDEN PUMP STATION

WATER LINE INTERCONNECTION

CITY OF LOBELVILLE, TENNESSEE

DESIGNED	JWH	DRAWN	DM	REVIEWED	JWH	APPROVED	JWH
DATE							
NO.							

DATE: OCTOBER 2010

SCALE: AS NOTED

SHEET NO. C-05