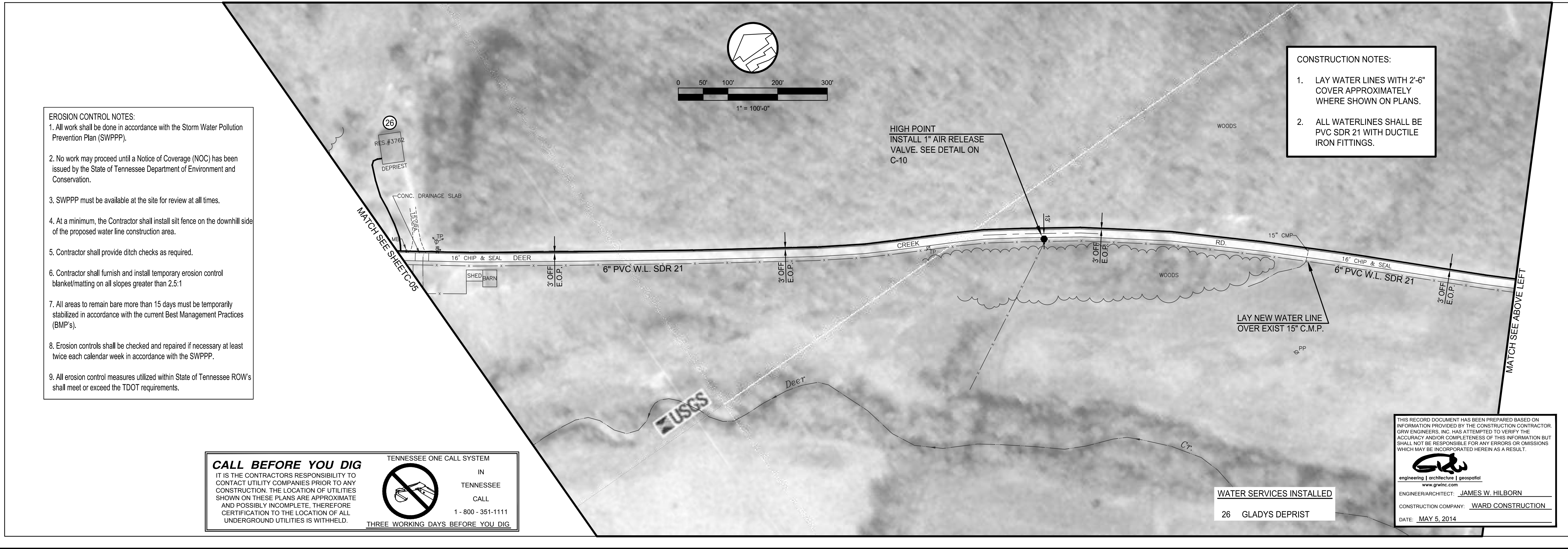
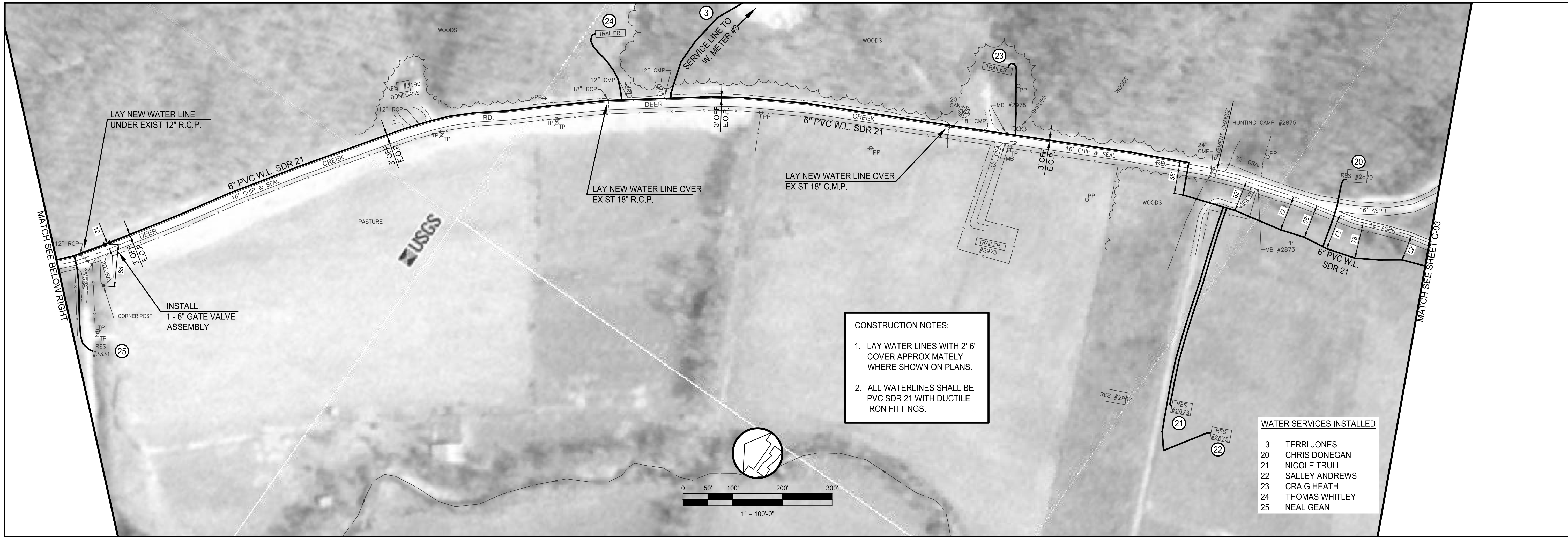


PRINTED: 5/15/2014 @ 4:58PM

FILE NAME: I:\3927 Lobelville\02-Deer Creek\Working Drawings\Deer Creek\RECORD Dwg\3927-C-03hnc-C-09.dwg



EROSION CONTROL NOTES:

- All work shall be done in accordance with the Storm Water Pollution Prevention Plan (SWPPP).
- No work may proceed until a Notice of Coverage (NOC) has been issued by the State of Tennessee Department of Environment and Conservation.
- SWPPP must be available at the site for review at all times.
- At a minimum, the Contractor shall install silt fence on the downhill side of the proposed water line construction area.
- Contractor shall provide ditch checks as required.
- Contractor shall furnish and install temporary erosion control blanket/matting on all slopes greater than 2.5:1
- All areas to remain bare more than 15 days must be temporarily stabilized in accordance with the current Best Management Practices (BMP's).
- Erosion controls shall be checked and repaired if necessary at least twice each calendar week in accordance with the SWPPP.
- All erosion control measures utilized within State of Tennessee ROW's shall meet or exceed the TDOT requirements.

CALL BEFORE YOU DIG

IT IS THE CONTRACTORS RESPONSIBILITY TO CONTACT UTILITY COMPANIES PRIOR TO ANY CONSTRUCTION. THE LOCATION OF UTILITIES SHOWN ON THESE PLANS ARE APPROXIMATE AND POSSIBLY INCOMPLETE. THEREFORE CERTIFICATION TO THE LOCATION OF ALL UNDERGROUND UTILITIES IS WITHHELD.

1 - 800 - 351-1111

THREE WORKING DAYS BEFORE YOU DIG

THIS RECORD DOCUMENT HAS BEEN PREPARED BASED ON INFORMATION PROVIDED BY THE CONSTRUCTION CONTRACTOR. GRWY ENGINEERS, INC. HAS ATTEMPTED TO VERIFY THE ACCURACY AND/OR COMPLETENESS OF THIS INFORMATION BUT SHALL NOT BE RESPONSIBLE FOR ANY ERRORS OR OMISSIONS WHICH MAY BE INCORPORATED HEREIN AS A RESULT.

GRWY
engineering | architecture | geospatial
www.grwinc.com

ENGINEER/ARCHITECT: JAMES W. HILBORN
CONSTRUCTION COMPANY: WARD CONSTRUCTION
DATE: MAY 5, 2014

This document, originally issued, sealed, and signed by James W. Hilborn, Kentucky Professional Engineer, No. 16514, on March 14, 2011, shall not be used in lieu of a certified document.

GRW PROJECT NO. 3827-02

ALL RIGHTS RESERVED. THIS DOCUMENT IS THE PROPERTY OF GRWY ENGINEERS, INC. IT IS TO BE REPRODUCED IN WHOLE OR IN PART WITHOUT WRITTEN PERMISSION.

ENGINEERS - ARCHITECTS - PLANNERS
www.grwinc.com

6" PVC DEER CREEK RD. LINE (NORTH)

WATER LINE EXTENSION
CITY OF LOBELVILLE AND PERRY COUNTY TENNESSEE

DESIGNED:	LER
BROWN	

BY:	SG

DATE:	LER

REVIEWED:	LER

APPROVED:	LER

NO.	DESCRIPTION	DATE

SCALE CHECK: THIS MARK SHOULD MEASURE EXACTLY 1" WHEN PLOTTED

DATE: JULY 2010
SCALE: AS NOTED
SHEET NO.

C-04