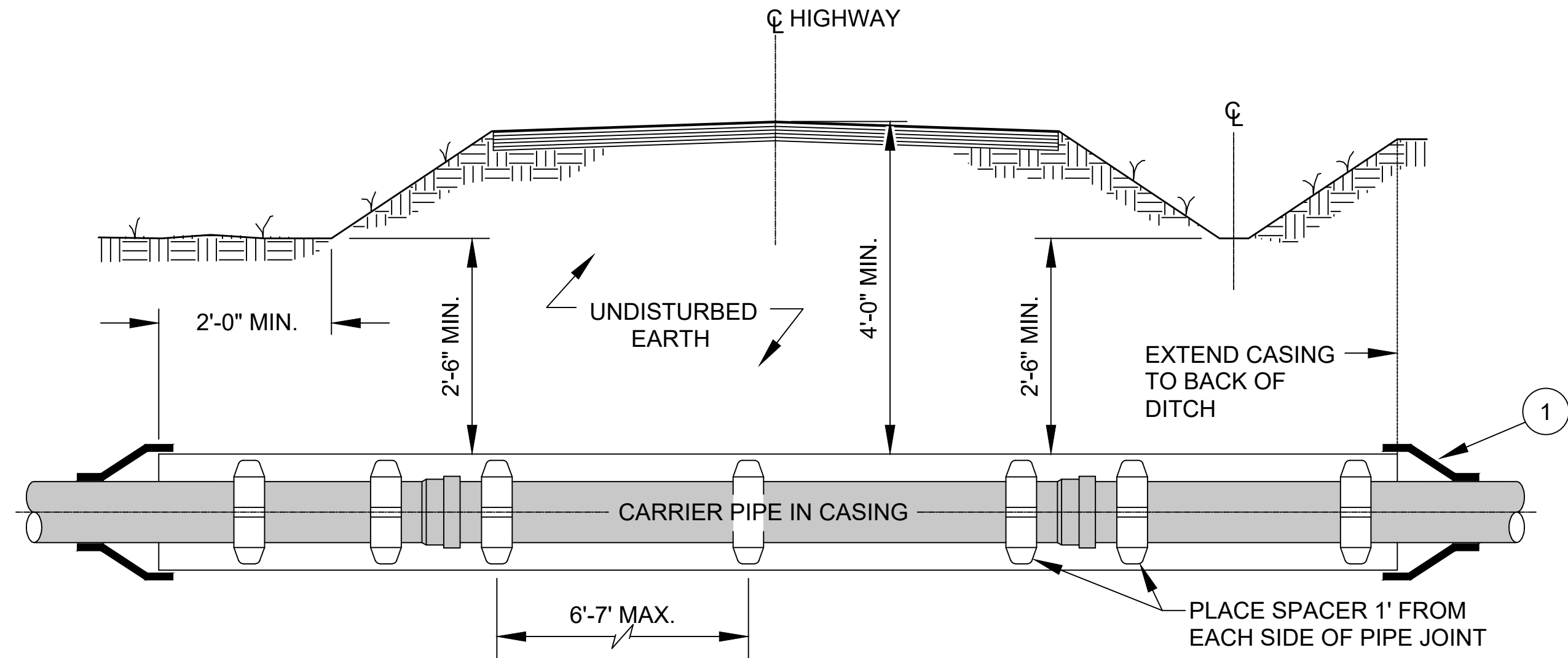
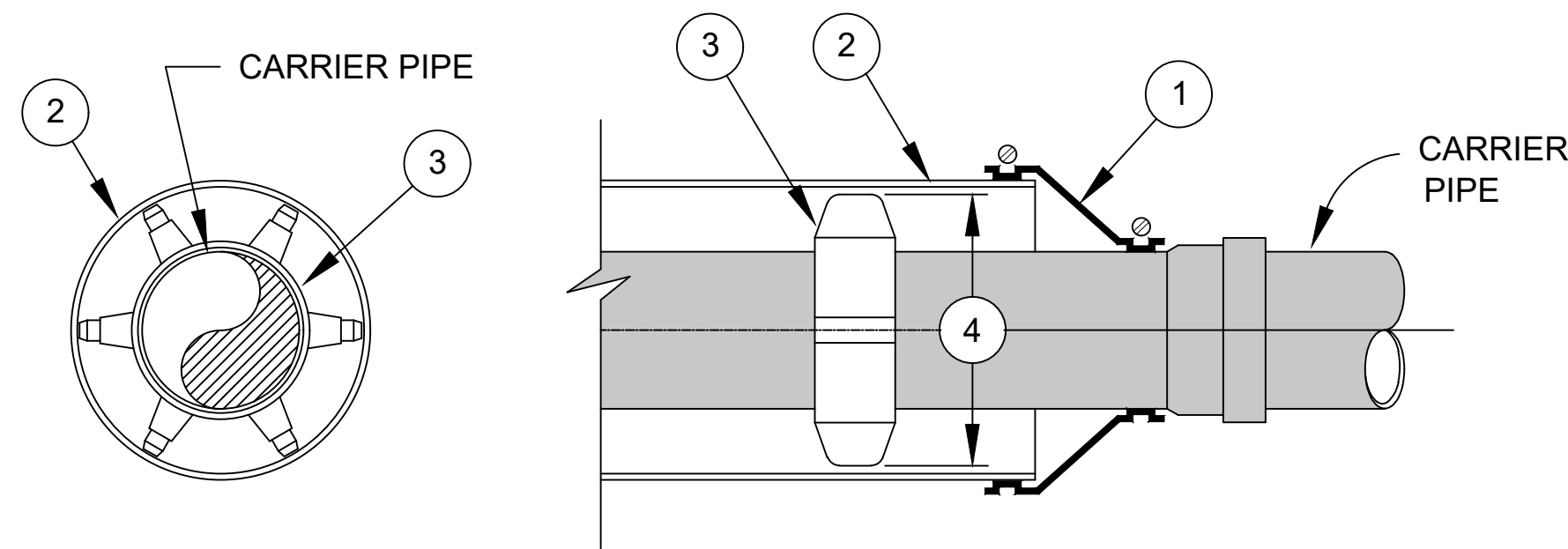


PRINTED: 2/12/2025 @ 8:33AM

FILE NAME: D:\Design Drawings\3827-01-06.dwg



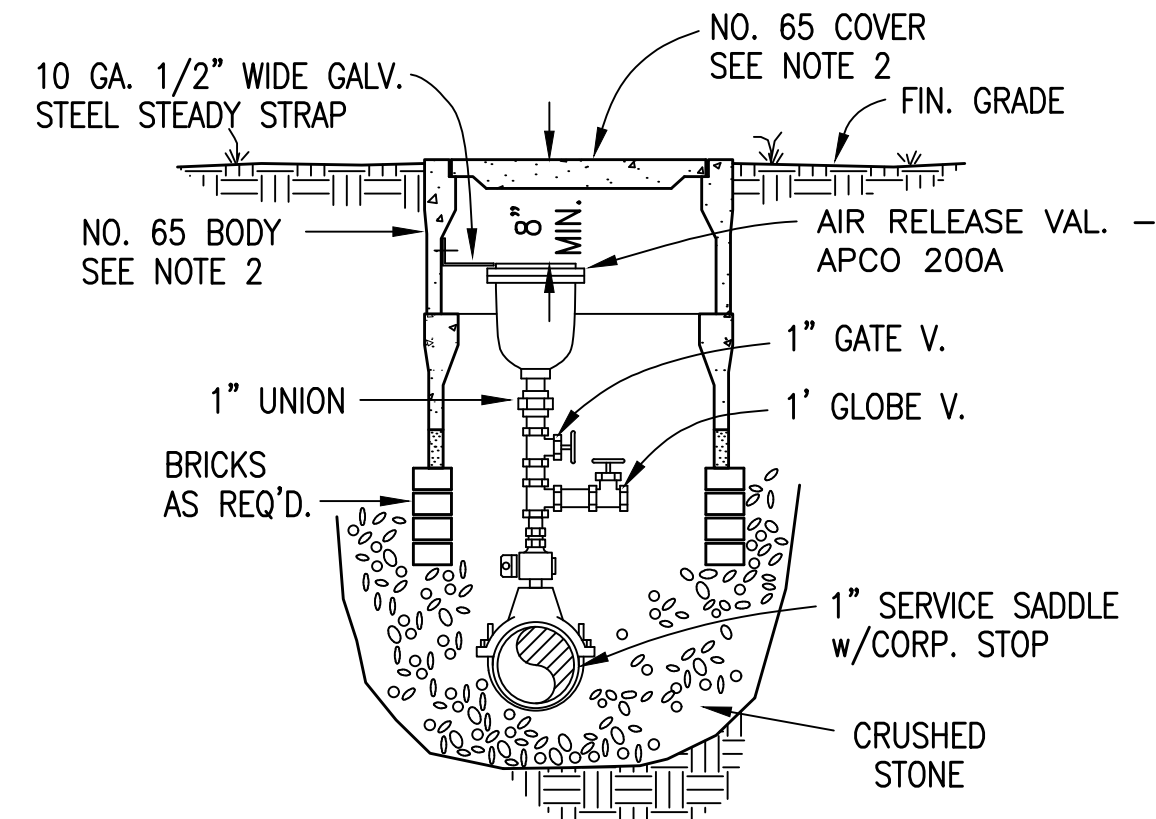
**TYPICAL DETAIL OF HIGHWAY CROSSING  
W/CASING AND CARRIER PIPE**  
NOT TO SCALE



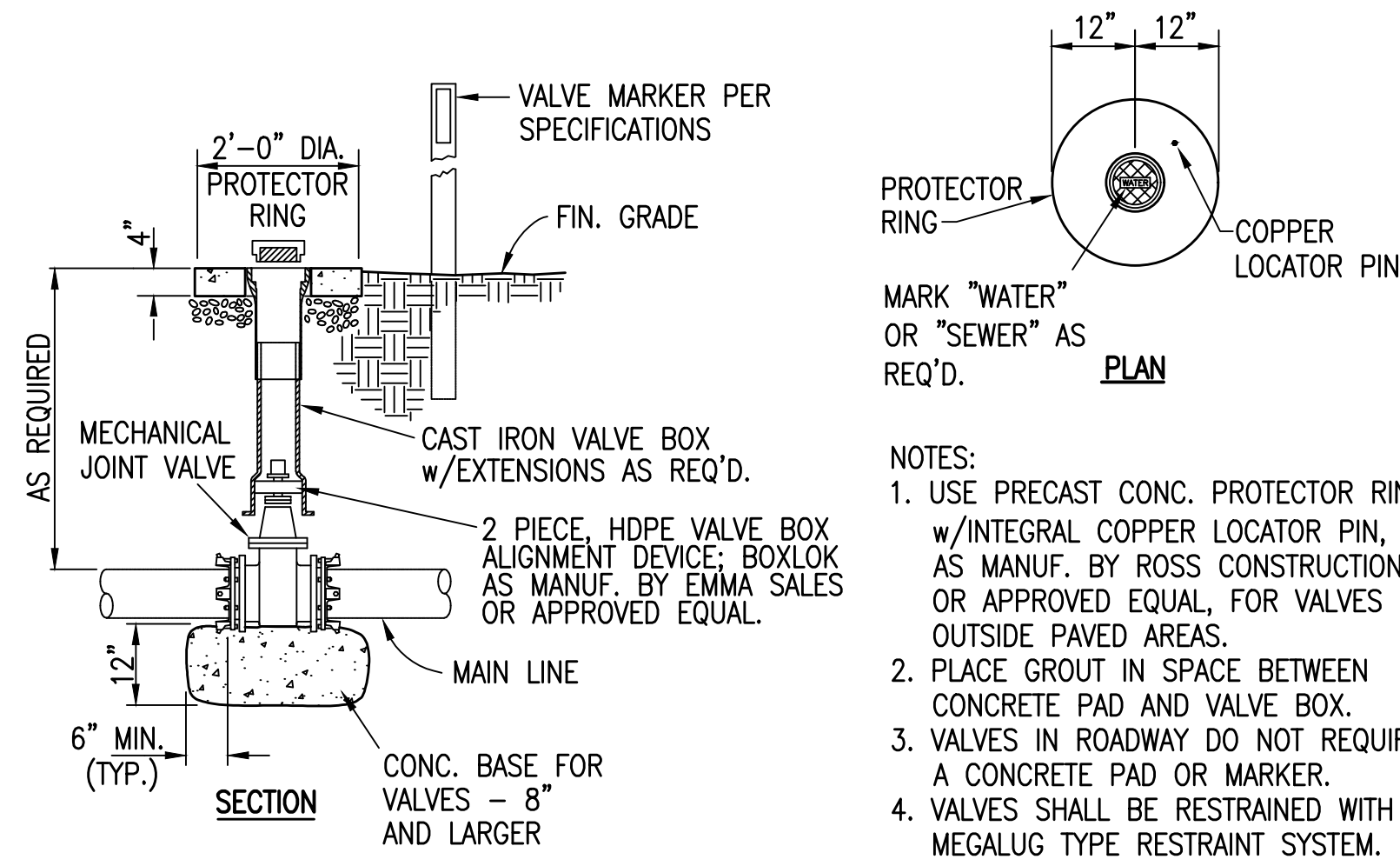
- 1 USE WATERTIGHT WRAP AROUND END SEALS WITH STAINLESS STEEL BANDS.
- 2 SMOOTH WALL STEEL CASING PIPE WITH BITUMINOUS COATING INSIDE & OUT.
- 3 CASING SPACERS SHALL BE STAINLESS STEEL TYPE INSTALLED IN A CENTERED/RESTRAINED CONFIGURATION.  
USE PSI MODEL S8G-2, APS MODEL SSIM OR APPROVED EQUAL FOR 4" THRU 24" DIA. CARRIER PIPES.  
USE PSI MODEL S12G-2, APS MODEL SSIM OR APPROVED EQUAL FOR 26" DIA. AND LARGER CARRIER PIPES.
- 4 SPACER RISERS/RUNNERS SHALL BE SIZED AND TRIMMED TO MAINTAIN 1/2" MAXIMUM CLEARANCE BETWEEN RUNNER AND CASING PIPE.
- 5 CARRIER PIPE IN ALL CASING OVER 60 FEET IN LENGTH SHALL BE DUCTILE IRON WITH LOCKING GASKETS.

**CASING PIPE W/CARRIER PIPE DETAIL**  
NOT TO SCALE

- NOTES:
1. THE CONTRACTOR SHALL MAKE PROVISIONS TO GIVE ADEQUATE SPACE FOR AIR RELEASE APPURTENANCES (SEE SHOP DRAWINGS).
  2. 17"x28" CONC. METER BOX - AS MANUF. BY BROOKS PRODUCTS, INC. MEMPHIS, TN - OR APPROVED EQUAL.
  3. SEAL SLOTS IN METER BOX W/NON-SHRINK GROUT.
  4. ALL ACCESSORY VALVES AND PIPING SHALL BE BRASS.

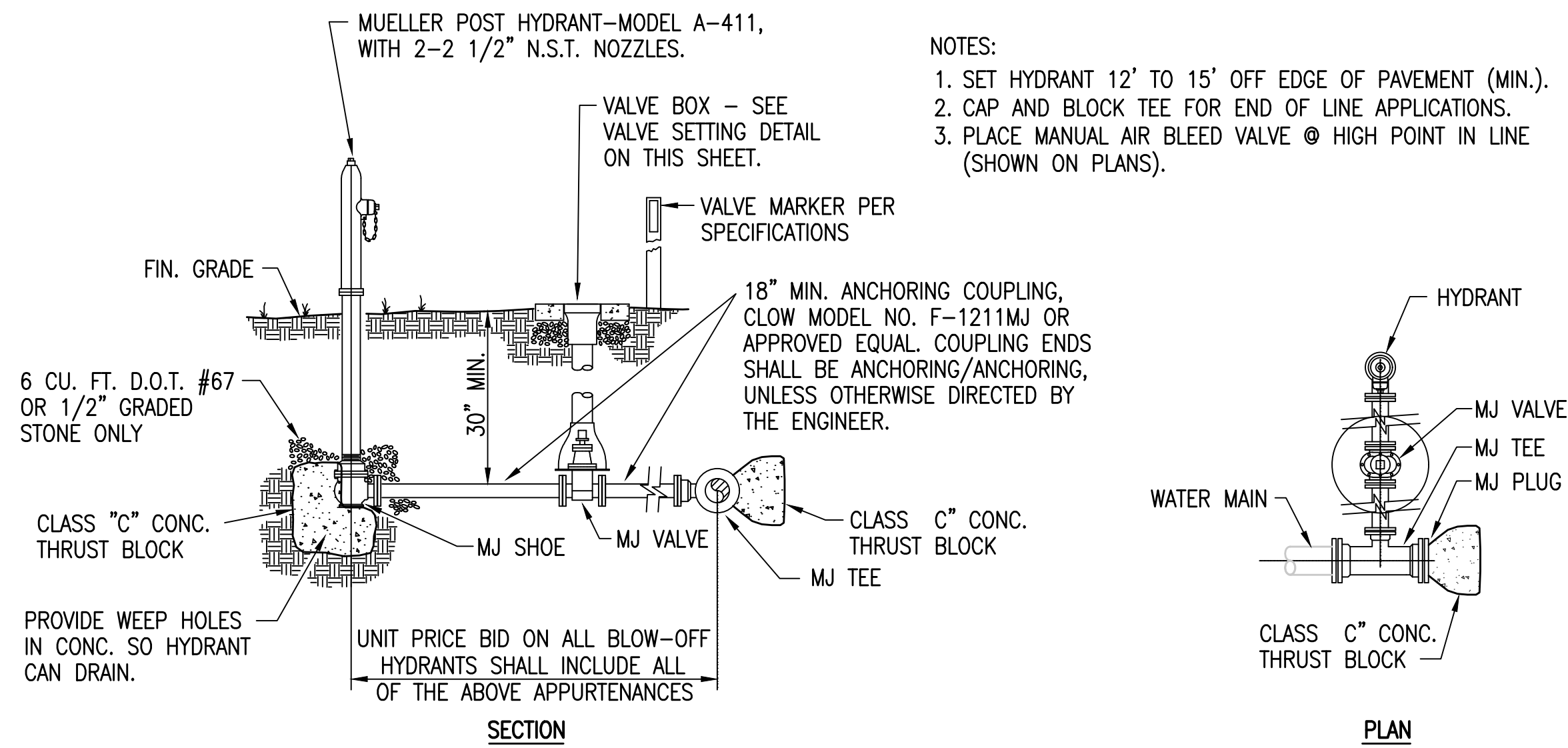


**AIR RELEASE VALVE**  
NOT TO SCALE



**VALVE SETTING DETAIL**  
NOT TO SCALE

- NOTES:
1. USE PRECAST CONC. PROTECTOR RING w/INTEGRAL COPPER LOCATOR PIN, AS MANUF. BY ROSS CONSTRUCTION OR APPROVED EQUAL, FOR VALVES OUTSIDE PAVED AREAS.
  2. PLACE GROUT IN SPACE BETWEEN CONCRETE PAD AND VALVE BOX.
  3. VALVES IN ROADWAY DO NOT REQUIRE A CONCRETE PAD OR MARKER.
  4. VALVES SHALL BE RESTRAINED WITH MEGALUG TYPE RESTRAINT SYSTEM.



**(4" AND SMALLER WATER LINES)  
BLOW-OFF ASSEMBLY**  
NOT TO SCALE



GRV PROJECT NO. 3827-01

ALL RIGHTS RESERVED  
THIS DOCUMENT IS THE PROPERTY OF GRV  
ENGINEERS - ARCHITECTS - PLANNERS  
IT IS TO BE USED ONLY FOR THE PROJECT  
FOR WHICH IT WAS PREPARED AND NO PART  
HEREOF CAN BE REPRODUCED OR USED FOR  
ANY OTHER PROJECT WITHOUT WRITTEN PERMISSION



**STANDARD WATER LINE DETAILS**  
  
WATER LINE EXTENSIONS  
CITY OF LOBEL VILLE, TENNESSEE

| DESIGNED  | JWH | DRAWN       | DM | REVIEWED    | JWH | APPROVED    | JWH |
|---|-----|-------------|----|-------------|-----|-------------|-----|
| DATE  |     | DATE        |    | DATE        |     | DATE        |     |
| NO.   |     | NO.         |    | NO.         |     | NO.         |     |
| DESCRIPTION   |     | DESCRIPTION |    | DESCRIPTION |     | DESCRIPTION |     |
| SCALE CHECK: THIS MARK SHOULD MEASURE EXACTLY 1" WHEN PLOTTED |     |             |    |             |     |             |     |

DATE:  
APRIL, 2009  
SCALE:  
AS NOTED  
SHEET NO.