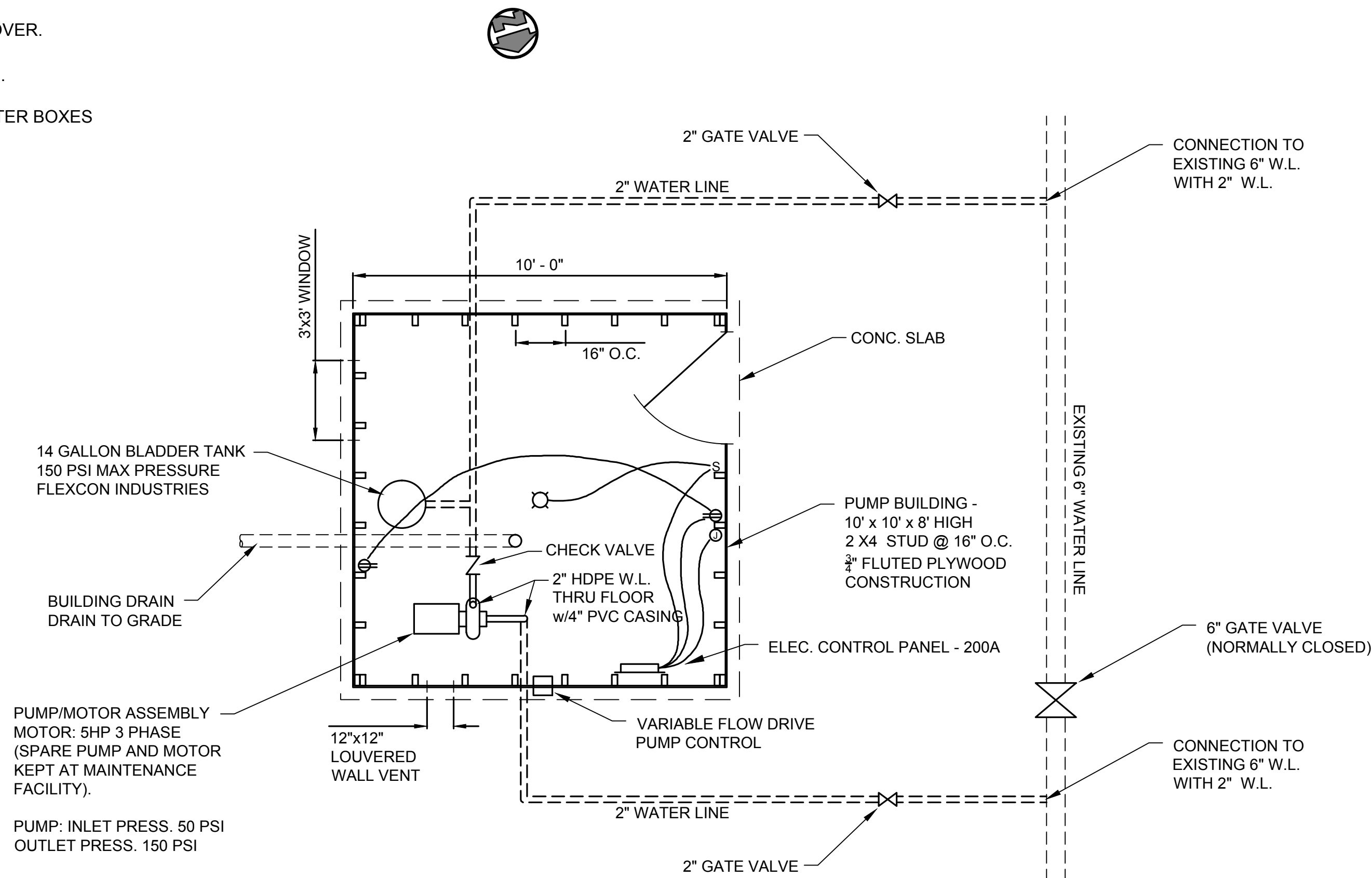
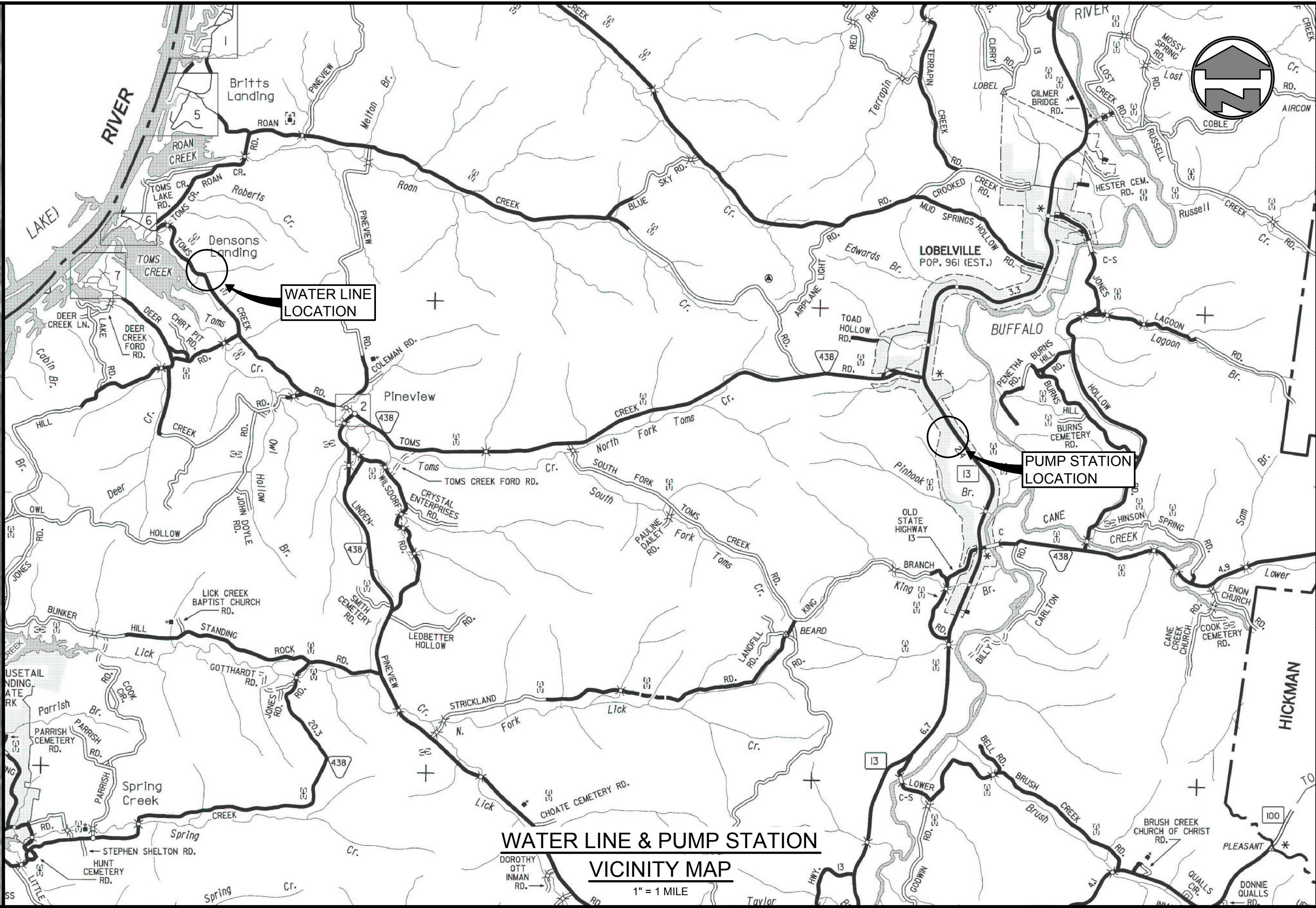



- NOTES:
1. ALL WATER LINES - PVC, SDR21, CLASS 200.
 2. ALL WATER LINES - MINIMUM 30" COVER.
 3. SERVICE LINES - TYPE K COPPER $\frac{3}{4}$ ".
 4. INDIVIDUAL PRVs INSTALLED IN METER BOXES ON McCUTCHEON RD.



PUMP STATION DETAIL
SCALE: 3/8" = 1' - 0"

DRAWING INDICATES FACILITIES CONSTRUCTED BY CITY. DRAWING IS BASED ON AS-CONSTRUCTED INFORMATION SUPPLIED BY CITY.



GRW PROJECT NO. 3405-01		ALL RIGHTS RESERVED. THIS DOCUMENT IS THE PROPERTY OF G&B. IT IS TO BE USED ONLY FOR THE PROJECT AND SITE SPECIFICALLY IDENTIFIED. IT IS NOT TO BE REPRODUCED IN WHOLE OR IN PART FOR ANY OTHER PROJECT WITHOUT WRITTEN PERMISSION.	
		ENGINEERS - ARCHITECTS - PLANNERS www.grwinc.com	
MCCUTCHEON RD. - STA. 0+00 TO STA. 15+00 E.O.L. OLD BEARDSTOWN RD. PUMP STATION WATER SYSTEM IMPROVEMENTS CITY OF LOBELVILLE, TENNESSEE			
DESIGNED:	JWH	DRAWN:	DM
REVIEWED:	JWH	APPROVED:	JWH
NO.	DATE	DESCRIPTION	SCALE CHECK: THIS MARK SHOULD MEASURE EXACTLY 1" WHEN PLOTTED
DATE: NOVEMBER 2009			
SCALE: AS NOTED			
SHEET NO.			
1 of 1			