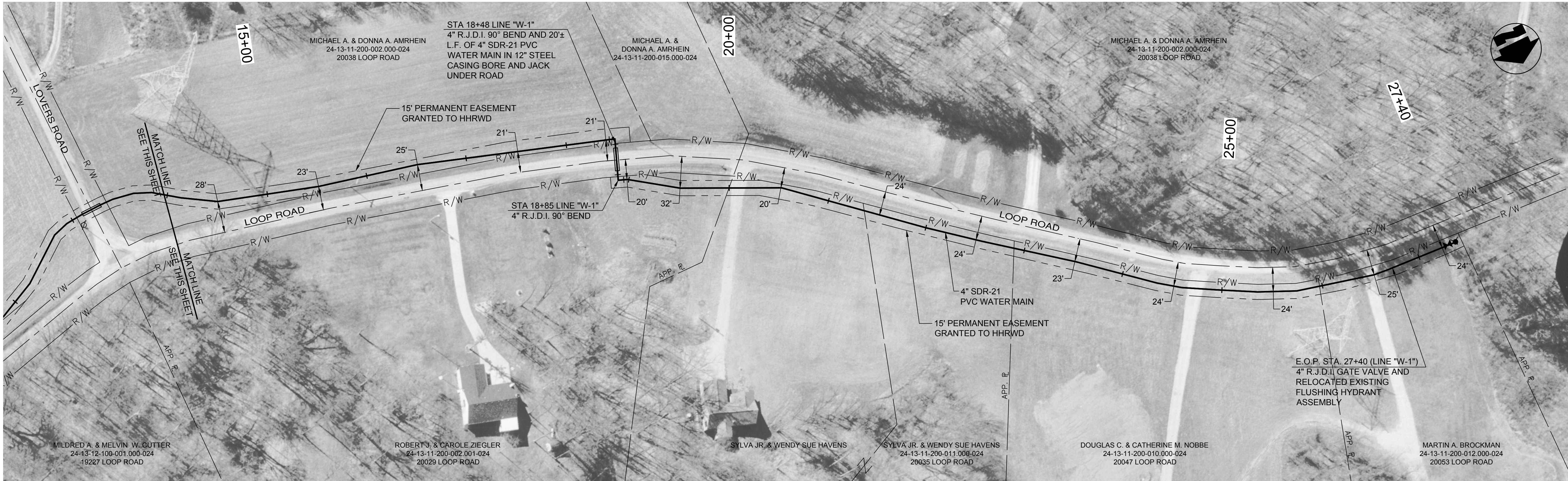


FILE NAME: I:\3421 - HHRWD - Annual Retainer\Sub-41 Loop Rd Ext\Working Drawings\DWI 3D\3421-41-646.dwg  
PRINTED: 2/20/2013 @ 9:45AM



PLAN VIEW - B.O.P. STA. 0+00 TO STA. 14+00 LINE "W-1"



PLAN VIEW - STA. 14+00 TO E.O.P. STA. 27+40 LINE "W-1"

- NOTES:
1. THE UTILITIES AND THEIR LOCATION SHOWN ON PLANS ARE APPROXIMATE. CONTRACTOR SHALL VERIFY ALL UTILITIES IN THE FIELD AND NOTIFY ALL UTILITY COMPANIES PRIOR TO INSTALLATION OF THE WATER LINE.
  2. ALL PIPING SHALL BE CLASS 200 UNLESS OTHERWISE NOTED.
  3. 48" MINIMUM COVER REQUIRED OVER TOP OF WATER LINE UNLESS OTHERWISE NOTED.
  4. CONSTRUCTION TO BEGIN AFTER ALL CROPS ARE REMOVED FROM PROJECT AREA FARM FIELDS.

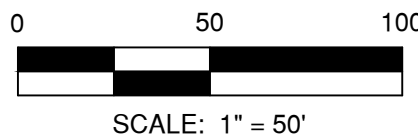
THIS RECORD DOCUMENT HAS BEEN PREPARED BASED ON INFORMATION PROVIDED BY THE CONSTRUCTION CONTRACTOR. GRW ENGINEERS, INC. HAS ATTEMPTED TO VERIFY THE ACCURACY AND/OR COMPLETENESS OF THIS INFORMATION BUT SHALL NOT BE RESPONSIBLE FOR ANY ERRORS OR OMISSIONS WHICH MAY BE INCORPORATED HEREIN AS A RESULT.

**GRW**  
ENGINEERS - ARCHITECTS - PLANNERS  
www.grwinc.com

ENGINEER/ARCHITECT: DANIEL R. CUTSHAW

CONSTRUCTION COMPANY: ROY HOLMAN EXCAVATING

DATE: 2-19-2013



NO.	DATE	BY	SS	JAJ	DRC	DRC
			DESIGNED	DRAWN	REVIEWED	APPROVED

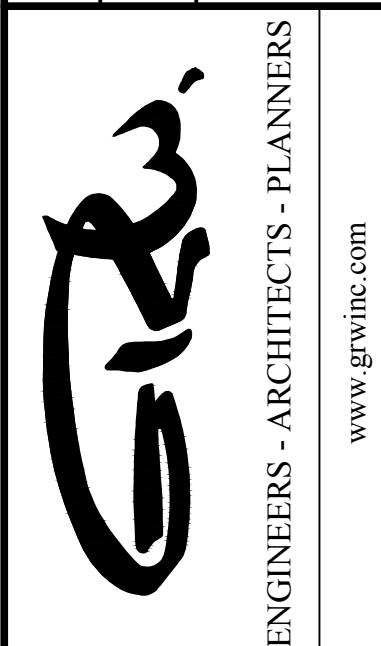
DATE: **SEPT 2012**

SCALE: **1"=50'**

SHEET NO.

LOOP ROAD AT LOVERS ROAD  
WATER MAIN EXTENSION

HOOSIER HILLS REGIONAL  
WATER DISTRICT



GRW/PROJECT NO. 3421-41

CLIENT PROJECT NO. --

ALL RIGHTS RESERVED.  
THIS DOCUMENT IS THE PROPERTY OF  
GRW ENGINEERS, INC. AND SHALL NOT  
BE REPRODUCED IN WHOLE OR IN PART  
FOR ANY OTHER PROJECT OR FOR  
OTHER THAN THIS SPECIFIC PROJECT  
WITHOUT WRITTEN PERMISSION

This document, originally  
issued, sealed, and signed  
by Daniel R. Cutshaw,  
Indiana Professional  
Engineer, No. 11200431, on  
September 6, 2012, shall  
not be used in lieu of a  
certified document.